

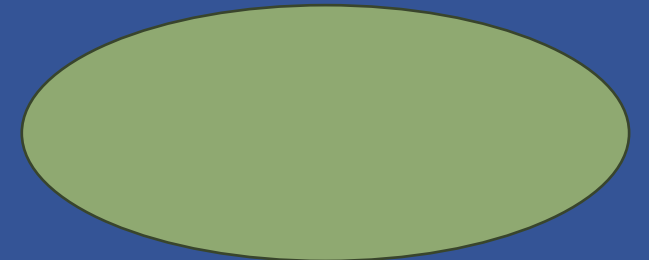


# **Solid Waste and Recyclable Material Contract Implementation Workshop**

April 23, 2026

## Workshop Purpose

- Provide an overview of current solid waste collection and options in the new contract.
- Outline options to consider, including:
  1. Curbside Recycling Frequency
  2. Recycling Processing Options
  3. Recycling Cart Distribution Options
  4. Recyclable Material Promotion Options
  5. Recycling Contamination Policy
  6. Yard Waste Separation Start Options



# Overview - Collection and Disposal/Processing

## *Two Components of Solid Waste and Recycling*

### Collection

- Collection remains the responsibility of the City
- Each City decides the best options for frequency, services, and volumes for their community
- Collection contractor will drop off the material at the designated disposal or processing site

### Disposal and Processing

- SWA Responsibility
- Typically a County function
- SWA focus for better pricing
- The City currently uses a County agreement for garbage, bulk, yard waste, and construction debris through July 2028

# Current Service

- Garbage Cart Service - Twice a week
  - First Cart provided at no cost, additional carts are \$75 one time to pay for cart
- Bulk - Once a Week - Unlimited amount
- Construction Debris - Once a week
  - 2 Cubic Yard Maximum
- Yard Waste - Once a week
  - 6 Cubic Yard Maximum

# Proposed Additional Services and Changes

## Curbside Recycling

- New Carts
- Artificial Intelligence to Identify Contamination
- Every Other Week Collection

## Other

- Electric Curbside Collection Vehicles
- Reduce Maximum Bulk Waste to 4 Cubic Yards per Week
- Two Large Collections per Year



# Innovative Technology

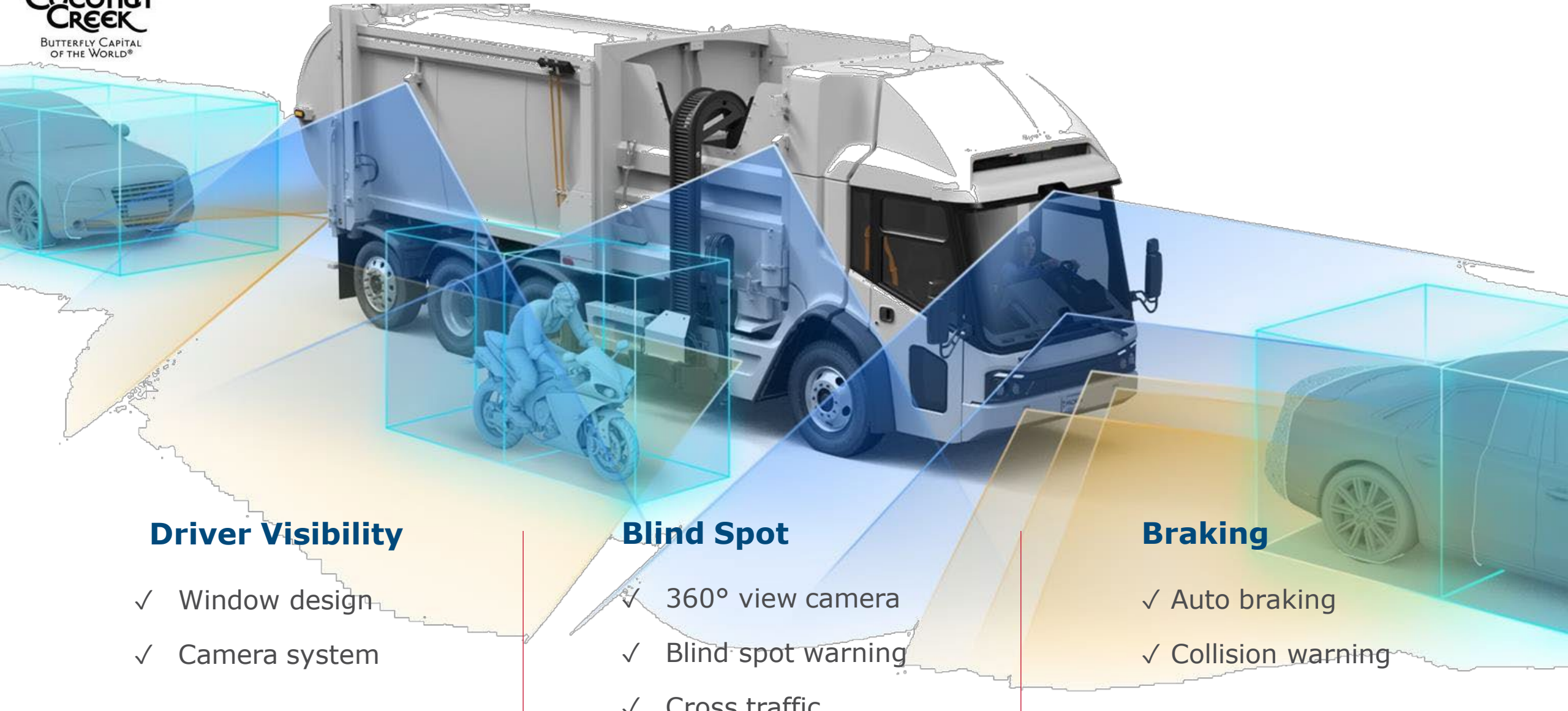
Better Ways to Deliver Services

# Electric Garbage and Recycling Trucks

- Coconut Creek will be the first Florida city with 100% EV Fleet for garbage and recycling collection
- Reduce noise
- Improve safety
- Fewer hydraulic leaks
- Zero tailpipe emissions
- 73% Greenhouse Gas Reduction (GHG) vs. diesel
- 69% GHG vs. Compressed Natural Gas (CNG)

Annual Emissions CO2e Per Truck		
Diesel	CNG	Electric Vehicle
102	104	33

## SAFER COMMUNITIES



### Driver Visibility

- ✓ Window design
- ✓ Camera system

### Blind Spot

- ✓ 360° view camera
- ✓ Blind spot warning
- ✓ Cross traffic

### Braking

- ✓ Auto braking
- ✓ Collision warning



# Artificial Intelligence to Identify Contamination

- Cutting Edge Technology to identify contamination
- Republic Services leading implementation of this technology
- First focus on plastic bags
- Est. 20-40% reduction in contamination
- Other communities already implementing:
  - Centerville, OH
  - Tacoma, WA
  - Salinas, CA

# Contamination Notice Samples

Thanks to residents like you, we're working towards diverting 50% of waste out of our landfill by 2030!

The recyclable material we collect is sorted by staff at the Waste & Recycling Centre. The materials we collect mustn't put staff, machinery or the environment at risk of harm.



CHECK OUT THE  
INS & OUTS  
OF CURBSIDE  
RECYCLING



DOWNLOAD THE FREE  
LETHBRIDGE LOOP APP FOR  
COLLECTION DAY REMINDERS

Have questions about this postcard?

Connect with our friendly  
311 team via phone or chat.  
Mon. - Fri. 8 a.m. - 4:30 p.m.

lethbridge311

We wanted to let you know that the below item(s) we collected from your cart on MMM-DD, are not permitted to go into your blue cart:



These are some items that are not accepted:

batteries



combustible  
materials

electronics



Our team noticed some issues when we emptied your recycling into the truck



Plastic Bags  
or film  
(cave wrap,  
air pillows,  
bubble wrap)



Plastic Bins &  
Hinged Containers  
(such as produce bins &  
takeout containers)



Paper Towels,  
Napkins or  
Wet/Dirty  
Paper



Tanks, Car Parts  
or Scrap Metal



Styrofoam



Food or Yard  
Waste



\*Tanglers\*  
(ropes, cords, chains)

# Lesson Learned During Contract

- Recycling Education is important
- Recycling Markets are more challenging than ever
- Focus on easily recyclable materials
- Bulk and Yard Waste Programs are often abused with non-program materials being placed at the curb
- Collection costs are rising faster than disposal and processing – everything is more expensive!
- Transfer Stations for landfilling are near capacity
- Recycling Facilities have built capacity to accommodate diversion



# Curbside Recycling Returns

Quality Over Quantity



COCONUT CREEK  
**RECYCLE  
RIGHT**



# Recycling Education

- Information with Cart Delivery
- Direct Mailing
- Social Media
- HOA Meetings
- Event Outreach

BACK TO THE BASICS

# RECYCLING 101

THE MATERIALS THAT WE ALWAYS ACCEPT

## ALWAYS



THE MATERIALS THAT WE NEVER ACCEPT

## NEVER



## HELPFUL HINTS TO AVOID IMPROPER RECYCLING

### NEVER BAG YOUR RECYCLABLES.

Recyclables should be placed in your cart **LOOSE, DRY** and relatively **CLEAN**.

### WISHCYCLING IS COUNTERPRODUCTIVE.

Tossing items into the recycling without checking whether they are recyclable causes significant issues at our plant. In many cases, these unacceptable items will be hauled to the landfill regardless.

**WHEN IN DOUBT, THROW IT OUT!**

### RECYCLING ARROWS DO NOT ALWAYS MEAN RECYCLABLE.

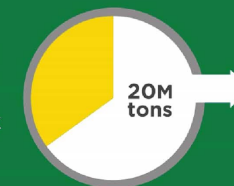
Recycling arrows refer to the type of plastic an item is made from, not whether or not it is recyclable at our plant.

**HINT:** Typically only #1, #2 and #5 plastics are recycled.

## DID YOU KNOW?

If these 20M tons were recycled, it would:

Out of 37.4 million tons available to be recycled, 20 million tons are thrown in the trash due to lack of access and participation.



Conserve an annual energy equivalent of **154 million barrels of oil**



Reduce U.S. greenhouse gas emissions by **96 million metric tons** of carbon dioxide equivalent



Generate **370,000 full-time equivalent (FTE) jobs**



Achieve the equivalent of taking more than **20 million cars** off U.S. highways.

**Curbside Recycling  
Collection Frequency  
Options**



# Curbside Recycling Collection Options

## 1. Every Other Week Service

- Non-Garbage Collection Day
- Gives special attention to recycling
- Reduces contamination
- Lowers collection costs

## 2. Weekly Service

- Garbage Collection Day
- May increase contamination
- Add \$3-\$4 per month collection costs



**CONSENSUS #1**  
Seeking consensus on  
the frequency of  
curbside recycling  
collection

# Recycling Processing Options



# Recycling Processing Options

1. Piggyback Hollywood agreement with Coastal for processing at Pompano facility

- Start immediately
- City pays processor directly
- \$25 per year included in Solid Waste Assessment

2. Wait for SWA contract

- Estimated Start FY 28
- Possibly better processing costs
- Defers recycling collection costs



**CONSENSUS #2**  
Seeking consensus on moving forward with recycling processing or wait for the SWA



# Recycling Cart Distribution Options

# Recycling Cart Distribution Options

## 1. Full Distribution

- Every home gets a cart
- Unengaged may lead to greater contamination
- New cart may invigorate new interest

## 2. Opt - In

- Only get cart if requested
- Some may not get message
- Makes distribution difficult
- May have to return to neighborhood many times
- Cleaner material

## 3. Opt - Out

- Take action to not get cart
- Reduces number of take backs

CONSENSUS #3  
Seeking consensus on  
recycling cart  
distribution



# Curbside Recycling Material Options



# Curbside Recycling Material Promotion Options

## 1. Valuable Commodities Only

- Plastic Bottles
- Aluminum Cans and Bottles
- Steel Cans
- Cardboard

## 2. Traditional Mix Adds

- Plastic Containers
- Mixed Paper
- Glass Bottles (not recycled)

*These Items are part of the contract's "Program Materials" and would not be considered contamination*

*Glass Dropoff Remains*



**CONSENSUS #4**  
Seeking consensus on  
recycling material  
promotion



# Contamination Reduction Policy Options

## 1. Contractor Focused

- AI will identify contamination after collection. GPS/RFID will identify location.
- Republic to notify resident by email/postcard
- 20-40% reduction in contamination
- PW Staff will attempt to visit before a future collection. Make contact, roll back cart if contaminated
- *Option:* Republic charges resident \$10 per incident with \$3 to City. Otherwise, City incurs costs for service.
- After initial period, 3 significantly contaminated carts in 3 months, remove recycling cart
- Attest that rules have been read for cart to return

## 2. Code Enforcement Focused

- Republic conveys violation to PW
- PW conveys violation to Code Enforcement (requires change to the Ordinance)
- Warning issued by Code Enforcement
- Summons Issued for second violation
- \$100 Fine
- May be contested to Magistrate:
  - Others placed contaminants in cart
  - Neighbor's cart

**CONSENSUS #5**  
Seeking consensus on  
recycling contamination  
policy

# Source Separated Yard Waste Collection Options



# Source Separated Yard Waste Collection

## 1. Implement Before FY29

- Increases City's diversion rate
- Adds \$5.15/month (\$62/yr) to Assessment
- Piggybacks with Hollywood and Fort Lauderdale are available

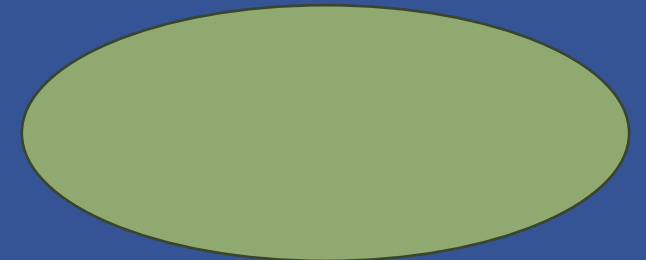
## 2. Implement with SWA

- Start FY29
- Possibly better pricing with SWA
- Defers additional collection costs

CONSENSUS #6  
Seeking consensus on  
when to begin yard  
waste diversion  
program

## Workshop Purpose

- Provide an overview of current solid waste collection and options in the new contract.
- Outline options to consider, including:
  1. Curbside Recycling Frequency
  2. Recycling Processing Options
  3. Recycling Cart Distribution Options
  4. Recyclable Material Promotion Options
  5. Recycling Contamination Policy
  6. Yard Waste Separation Start Options



# Thank You

