

EXHIBIT "A"

**Please see map

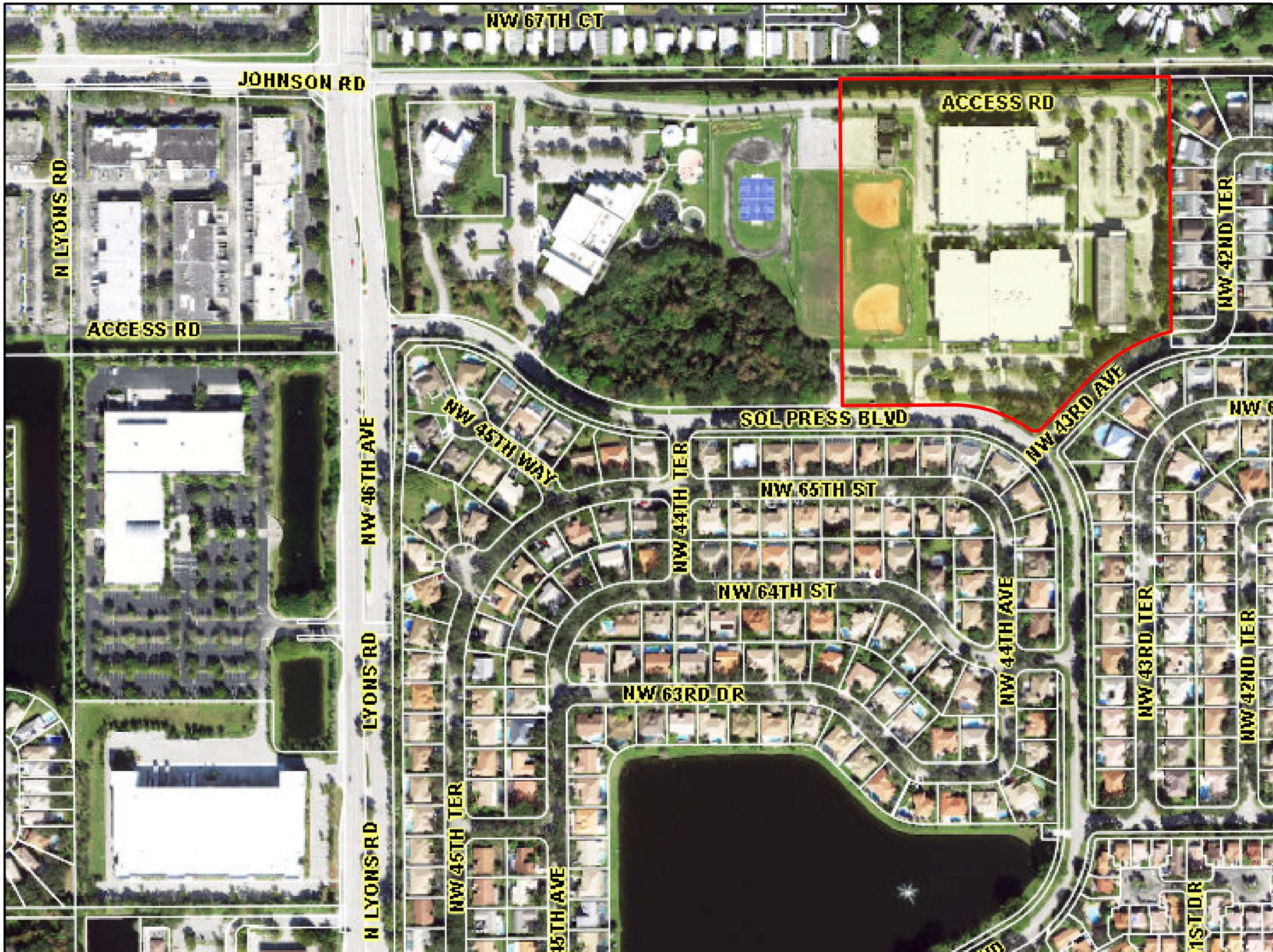
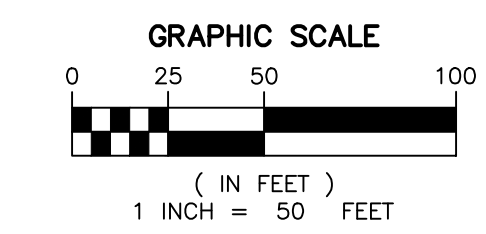


EXHIBIT "B"



- EXISTING CAR LOOP = ±36 VEHICLES
PROPOSED CAR LOOP = ±179 VEHICLES
- PROS:**
- INCREASES THE NUMBER OF CARS STACKED ON SITE FROM +/- 36 TO +/-179.
 - FEWER BUSES CAN LOAD AT A TIME, INCREASING STUDENT LOADING TIMES. EXCEPTIONAL EDUCATION STUDENT (ESE) LOADING AND UNLOADING TIMES WILL ALSO INCREASE.
 - BUSES STACKING ON SOL PRESS BLVD., WHICH WILL OBSTRUCT TRAFFIC LANES AND VIEW OF PEDESTRIANS AND ONCOMING TRAFFIC.
 - BUSES STACKED ON SOL PRESS BLVD. WILL BLOCK THE LINE OF SIGHT OF BUSES EXITING THE BUS LOOP.
 - PREVENTS THE USE OF THE SOUTH PARKING LOTS DURING DROP-OFF AND PICK-UP HOURS.
 - SCHOOL STAFF AND PARENTS PARKED IN THE SOUTH PARKING LOTS UNABLE TO LEAVE WHILE BUSES ARE QUEUED.
 - VISITORS REQUIRED TO PARK IN THE SOUTHEAST PARKING LOT (BEHIND BUILDING 4).
 - BECAUSE THE INTERSECTION OF LYONS ROAD AND SOL PRESS BLVD. IS NOT SIGNALIZED, IN ORDER TO GO SOUTH ON LYONS ROAD, BUSES WILL HAVE TO TURN LEFT OUT OF THE SCHOOL AND DRIVE SOUTH ON SERKO BLVD. TO THE INTERSECTION OF LYONS ROAD AND SERKO BLVD., EXTENDING THE TIME OF TRAVEL.
 - INCREASES THE NUMBER OF STAFF REQUIRED TO MANAGE THE VEHICULAR AND PEDESTRIAN GATES.
 - THE GATE AT THE SOUTHEAST PARKING LOTS NW 42ND TERRACE ACCESS TO BE CLOSED DURING PICK-UP AND DROP-OFF HOURS TO PREVENT THE PARKING LOT FROM BEING USED TO PICK-UP AND DROP-OFF STUDENTS OR AS A PASS-THROUGH, REQUIRING MANPOWER.
 - TRAFFIC STACKING TO TURN LEFT FROM LYONS ROAD TO SOL PRESS BLVD. MAY BECOME AN ISSUE.
 - REQUIRES THE REMOVAL AND/OR RELOCATION OF EXISTING TREES.
- CONS:**
- PARENTS HAVE TO DRIVE A LONGER DISTANCE TO ACCESS THE SCHOOL'S CAR LOOP. POTENTIALLY WILL DISCOURAGE USE AND CONTINUE TO USE SOL PRESS BLVD. AS AN UNAUTHORIZED PICK-UP/DROP-OFF LOCATION, WHICH WILL NOT REDUCE THE NEED FOR POLICE DEPARTMENT PRESENCE.
 - INCREASING STUDENT LOADING TIMES. EXCEPTIONAL EDUCATION STUDENT (ESE) LOADING AND UNLOADING TIMES WILL ALSO INCREASE.
 - BUSES STACKING ON SOL PRESS BLVD., WHICH WILL OBSTRUCT TRAFFIC LANES AND VIEW OF PEDESTRIANS AND ONCOMING TRAFFIC.
 - BUSES STACKED ON SOL PRESS BLVD. WILL BLOCK THE LINE OF SIGHT OF BUSES EXITING THE BUS LOOP.
 - PREVENTS THE USE OF THE SOUTH PARKING LOTS DURING DROP-OFF AND PICK-UP HOURS.
 - SCHOOL STAFF AND PARENTS PARKED IN THE SOUTH PARKING LOTS UNABLE TO LEAVE WHILE BUSES ARE QUEUED.
 - VISITORS REQUIRED TO PARK IN THE SOUTHEAST PARKING LOT (BEHIND BUILDING 4).
 - BECAUSE THE INTERSECTION OF LYONS ROAD AND SOL PRESS BLVD. IS NOT SIGNALIZED, IN ORDER TO GO SOUTH ON LYONS ROAD, BUSES WILL HAVE TO TURN LEFT OUT OF THE SCHOOL AND DRIVE SOUTH ON SERKO BLVD. TO THE INTERSECTION OF LYONS ROAD AND SERKO BLVD., EXTENDING THE TIME OF TRAVEL.
 - INCREASES THE NUMBER OF STAFF REQUIRED TO MANAGE THE VEHICULAR AND PEDESTRIAN GATES.
 - THE GATE AT THE SOUTHEAST PARKING LOTS NW 42ND TERRACE ACCESS TO BE CLOSED DURING PICK-UP AND DROP-OFF HOURS TO PREVENT THE PARKING LOT FROM BEING USED TO PICK-UP AND DROP-OFF STUDENTS OR AS A PASS-THROUGH, REQUIRING MANPOWER.
 - TRAFFIC STACKING TO TURN LEFT FROM LYONS ROAD TO SOL PRESS BLVD. MAY BECOME AN ISSUE.
 - REQUIRES THE REMOVAL AND/OR RELOCATION OF EXISTING TREES.
- 2. SOUTHEAST PARKING LOT:**
- CONSTRUCT DOUBLES GATE AT THE NORTH AND SOUTH ENDS OF THE PARKING LOT.
 - CONSTRUCT A DRIVEWAY CONNECTION TO NW 42ND TERRACE.
 - CONSTRUCT APPROXIMATELY 250 LF OF 8' HIGH OPAQUE FENCE ALONG THE EAST SIDE OF THE SCHOOL TO BLOCK VIEW OF THE WINDOWS FROM THE PARKING LOT.
 - CONSTRUCT APPROXIMATELY 70 LF OF 5' SIDEWALK ALONG THE EAST SIDE OF THE PARKING LOT TO PROVIDE ACCESS TO THE SCHOOLS SINGLE POINT OF ENTRY.
 - RE-STRIP PARKING LOT TO INCLUDE TWO (2) ADA PARKING SPACES.
 - REMOVE TWO (2) TO FOUR (4) PARKING SPACES AT THE NORTH END OF THE PARKING LOT TO ALLOW FOR THE OPENING OF THE GATES.
 - CONSTRUCT TWO (2) PEDESTRIAN GATES WITH PANIC HARDWARE.
 - CONSTRUCT STOP BAR AND STOP SIGN.
- 3. NORTH ACCESS DRIVE AND NORTHEAST PARKING LOT:**
- RELOCATE EXISTING GATE AT THE NORTH ACCESS DRIVE.
 - CONSTRUCT APPROXIMATELY 710 LF OF 8' HIGH SECURITY FENCE.
 - CONSTRUCT ONE (1) 70' LONG ROLLING GATE.
 - CONSTRUCT THREE (3) PEDESTRIAN GATES W/ PANIC HARDWARE.
 - REMOVE APPROXIMATELY 350 LF OF 4' HIGH FENCE.
 - REMOVE EXISTING 5' WIDE SIDEWALK CONSTRUCT APPROXIMATELY 110 LF OF 10' WIDE SIDEWALK.
 - CONSTRUCT APPROXIMATELY 375 LF OF SIDEWALK EXTENSION.
 - CONSTRUCT A SPECIAL EMPHASIS CROSSWALK FOR NEW SIDEWALK EXTENSION.

- REQUIRED IMPROVEMENTS:**
- SOUTH PARKING LOTS:**
 - CONSTRUCT ASPHALT DRIVES TO CONNECT THE TWO SOUTH PARKING LOTS.
 - CONSTRUCT ASPHALT, CURB & GUTTER AND ADA RAMP TO IMPROVE THE TURNING RADII AT ACCESS POINTS AND WITHIN THE PARKING LOTS TO ALLOW BUSES TO MANUEVER.
 - REMOVE TWO (2) PARKING SPACES AND CONSTRUCT ASPHALT AND CURB.
 - CONSTRUCT APPROXIMATELY 265 LF OF 4' HIGH FENCE WITH OPENINGS AT BUS DROP-OFF/PICK-UP AREA.
 - COVERING OVER SIDEWALK TO BE EXTENDED TO COVER THE ENTIRE SECTIONS WHERE STUDENTS WILL BE WAITING TO LOAD AND UNLOAD.
 - PERMIT THE REMOVAL OR RELOCATION OF EXISTING TREES AS NECESSARY.
 - REMOVE SEVENTEEN (17) PARKING SPACES AND CONSTRUCT APPROXIMATELY 327 LF OF SIDEWALK EXTENSION ALONG THE SOUTH BUS LOOP PARKING LOT.
 - CONSTRUCT ASPHALT, CURB & ADA RAMP TO IMPROVE THE TURNING RADII AT EGRESS. (IMPROVEMENTS BY CITY)



TRAFFIC CIRCULATION PLAN-ALTERNATIVE 4

LYONS CREEK MIDDLE SCHOOL
4333 SOL PRESS BLVD., COCONUT CREEK, FL 33073
FOR: SCHOOL BOARD OF BROWARD COUNTY

MILLER LEGG
South Florida Office: 5747 N. Andrews Way
Fl. Lauderdale, Florida, 33309-2384
954-438-7000
www.millerglegg.com

CERTIFICATE OF AUTHORIZATION		
LB6680		
DES	DRWN	CHK
DES	DRWN	CHK
PROJECT / FILE NO.		
22-00136		
DRAWING NO.		
EXH1.0		
DATE DRAWN:		
6/7/24		

V:\PROJECTS\2022\22-00136 - LYONS CREEK MS.DRAWINGS\22-00136_SED - ALT 4.DWG by MDUNSHIEE 6/7/2024 9:14:38 AM

APPROVED: [Signature] SEALS ARE OFF
FLA. REGISTRATION NO. DATE: 6/7/2024

EXHIBIT "C"

