



Facilities Amendment and Master Plan

"Better Together"



Overview - Collection and Disposal/Processing

Two Components of Solid Waste and Recycling

Collection

- Collection remains the responsibility of the **City**
- Each City decides the best options for frequency, services, and volumes for their community
- Collection contractor will drop off the material at the designated disposal or processing site

Disposal and Processing

- SWA responsibility
- Typically, a County function
- SWA focus for better pricing
- The City currently uses a County agreement for garbage, bulk, yard trash, and construction debris through

Facilities Amendment

What is it?

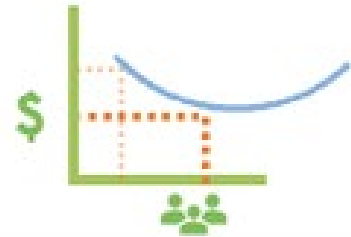
- First Amendment to the Solid Waste Authority Interlocal Agreement with Participating Cities and the County
- Originally, it was envisioned that the SWA would own most facilities
- Addresses the Back End of the Agreement and the Dispositions of Assets
- Sets Maximum Service Charges to protect communities' costs
- Must be passed by 80% of the population of the participating cities
- Provides for an Opt-Out for communities after reviewing Master Plan and funding policies

The Master Plan

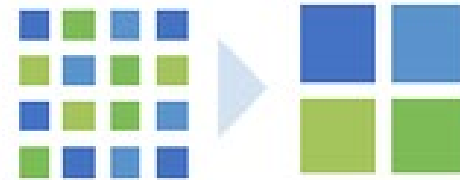
The "Journey" to 75% Recycling Goal



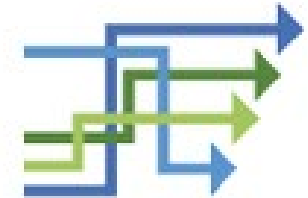
Behavior Change



Economies of Scale



Leverage Existing Infrastructure

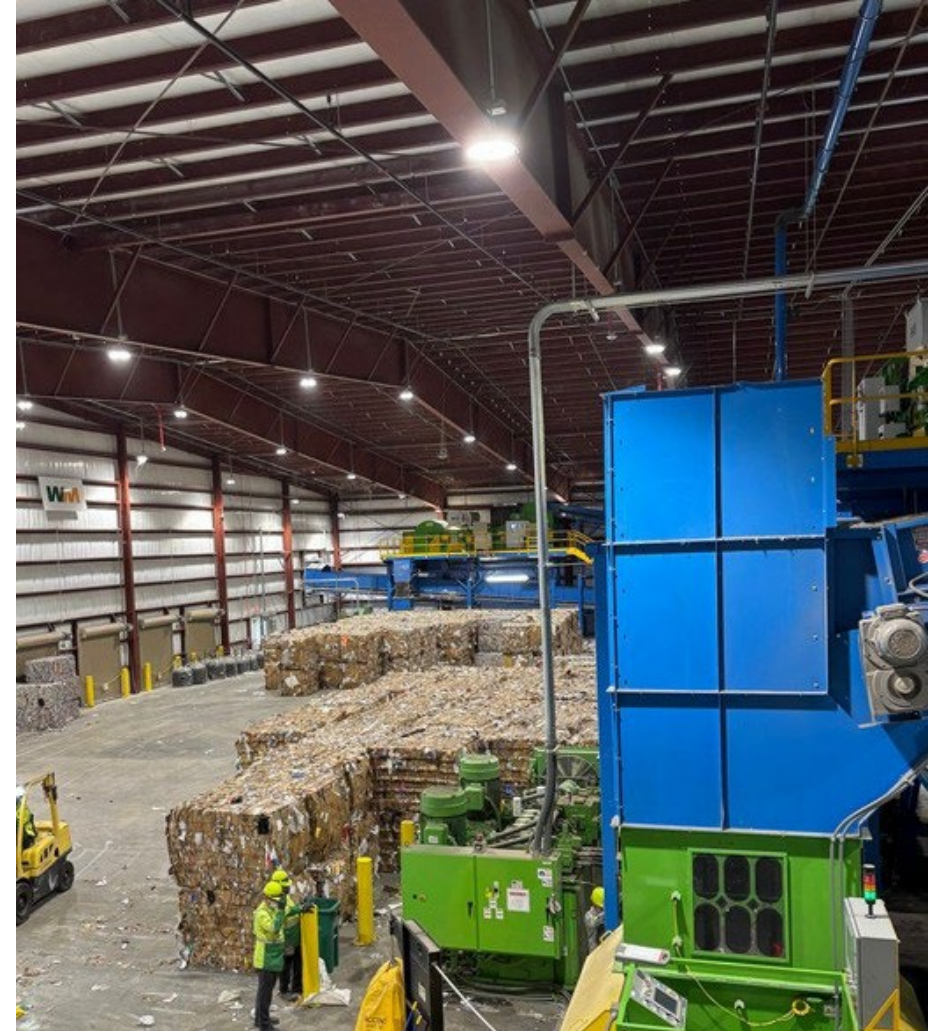


Harmonize Services

- Refine and execute a robust education and outreach plan that supports behavior change.
- Leverage economies of scale to achieve the best pricing and for long-term financial security.
- Maximize the use of existing solid waste processing and disposal infrastructure.
- Harmonize processing and disposal services for SWA members.
- Create consensus and alignment among ILA members for the changes needed to meet the Master Plan goals.

Master Plan Programs and Deliverables

1. Maximize recycling processing services for all SWA members
2. Develop new reduction, reuse, and diversion programs and policies
 - a. Construction and demolition debris
 - b. Commercial recycling
 - c. Yard waste
 - d. Food waste
3. Develop and operate eight permanent HHW/electronics/recycling drop-off sites
4. Harmonize processing and disposal services to increase efficiency
5. Expand the education and outreach program to support behavior change



Master Plan Implementation

•Phase I (FY 2027): Population-based member contributions

- Achieve the best pricing by maximizing bargaining power through economies of scale
- Secure long-term stable and predictable costs for recycling, yard waste, and disposal
- Set up the surcharge infrastructure that goes into effect in FY 2028
- Expand comprehensive public education and outreach programs
- Plan for the eight (8) recycling drop-off centers
- Implement targeted waste stream programs including C&D, commercial recycling, and organic waste processing

•Phase II (FY 2028-FY 2030): Tipping fee surcharge

- Purchase land for eight (8) recycling drop-off centers
- Start developing and operating recycling drop-off centers
- Continue the public education and outreach program
- Build capital reserves to protect ILA members from market forces which could negatively impact pricing

•Phase III (FY 2031-FY 2046): Non-ad valorem assessment

- Complete all eight (8) recycling drop-off centers
- Expand diversion programs (food waste, yard waste, bulk waste)
- Consider innovative technologies
- Continue the public education and outreach program
- Continue building capital reserves

Funding Flow

Phase I: FY 2027

Member Contribution

City pays contribution (based on city's population)

Comparable to FY 2026

Phase II: FY 2028 to 2030

Tipping Fee
Surcharge

In FY 2028, the \$2.20 per ton surcharge is added to the collection rate paid by the hauler (i.e. pass through cost)

Recycling, yard waste, solid waste is collected

Truck gets to scale (for example, 10 tons at \$2.20 per ton = \$22)

Receiving facility collects the tipping fee plus \$2.20 surcharge from the hauler (i.e. pass through cost)

Receiving facility passes \$22 to the SWA

Phase III: FY 2031

Non-Ad Valorem Assessment

Recycling, yard waste, solid waste is collected

SWA assessment on tax bill - estimated at less than \$3.00 per ton or \$4.50 per unit per year

Assessment goes straight to SWA

Maximum Service Charges for Materials Processing

Recyclable Materials	\$110.00
Yard Trash (for disposal)	\$52.56
Yard Trash (for beneficial use)	\$80.00
SWD (Class I Waste)	\$57.49
SWD (Class III Waste)	\$52.56

Maximum service charges as of October 1, 2025. These charges will escalate on an annual basis in accordance with the established annual revenue adjustment, at a maximum, that aligns with the Producer Price Index for Solid Waste Collection (PPI-SW), Series ID: PCU562111562111, which reflects industry-specific cost escalation for solid waste collection, reported on a non-seasonally adjusted basis.

Decreased Tipping Fees Help Offset Surcharge

TODAY

Fragmented System of Disposal and Processing Agreements
Limited Disposal Options Drive Prices Up

If cities stay in the SWA

The SWA will secure binding costs to process and dispose of waste generated by each ILA member
SWA secures “most favored nation” pricing for all ILA members (a lower and more stable rate over time than an ILA member can secure independently)

Goal is for decreased tipping fee to help offset the per ton surcharge.



Thank you