

SECTION: 86120000
COUNTY: BROWARD
STATE RD: 810
PERMIT: 2023-L-491-00007

**AMENDMENT NUMBER TEN (10) TO
FLORIDA DEPARTMENT OF TRANSPORTATION DISTRICT FOUR (4)
LANDSCAPE INCLUSIVE MAINTENANCE MEMORANDUM OF AGREEMENT**

THIS AMENDMENT Number Ten (10) to the Agreement dated May 27, 2009, made and entered into this _____ day of _____, 20____ by and between the **DEPARTMENT OF TRANSPORTATION** hereinafter called the **DEPARTMENT** and the **CITY OF COCONUT CREEK**, a municipal subdivision of the State of Florida, hereinafter called the **AGENCY**.

WITNESSETH

WHEREAS, the parties entered into the Landscape Inclusive Maintenance Memorandum of Agreement dated, May 27, 2009 (“Original Agreement”) for the purpose of the AGENCY maintaining landscape improvements on various state roads within the AGENCY’S jurisdiction, including **State Road 810 (W. Hillsboro Boulevard)**; and,

WHEREAS, the DEPARTMENT and the AGENCY have agreed to add additional landscape on **State Road 810 (W. Hillsboro Boulevard)** in accordance with the Original Agreement; and,

WHEREAS, the parties hereto mutually recognize the need for entering into this Amendment, designating and setting forth the responsibilities of each party for the Additional Improvements; and,

WHEREAS, the AGENCY by Resolution No. _____ dated _____, 20____ attached hereto and by this reference made a part hereof, desires to enter into this Agreement and authorizes its officers to do so,

NOW THEREFORE, for and in consideration of mutual benefits that flow each to the other, the parties covenant and agree as follows:

1. The parties herein agree to modify the Original Agreement accordingly:
 - a. The following sentence is added to the end of section 3.A. MAINTENANCE OF FACILITIES:
 - The AGENCY shall be responsible for all maintenance and repairs to FDOT sidewalks directly attributable to tree roots or other AGENCY maintained improvements.

SECTION: 86120000
COUNTY: BROWARD
STATE RD: 810
PERMIT: 2023-L-491-00007

b. The following section is hereby added:

20. DEPARTMENT ACCESS TO FACILITIES

The DEPARTMENT will periodically need access to various features within the limits of this Agreement. Upon request of the DEPARTMENT, the AGENCY will have 14 calendar days to provide access to the items noted by the DEPARTMENT. This may require temporary or permanent removal of improvements such as hardscape, landscape or other items conflicting with the items to which the Department needs access.

Should the AGENCY fail to remove or relocate items as requested, the Department may:

- (a) Remove conflicting improvements or any portion thereof.
 - (b) Restore the area with any material meeting Department standards.
 - (c) Restore the improvements at the request and funding of the AGENCY.
2. Pursuant to Page 7, Section 8 of the Original Agreement, the DEPARTMENT will allow an Adjacent Property Owner to construct additional landscape improvements or to modify an improvement located as indicated in **Exhibit "A"**, State Road 810 (Hillsboro Boulevard) from M.P. 1.338 to M.P. 1.379.
 3. The Additional Improvements, more fully described in the plans attached to this Amendment as **Exhibit "B"** and incorporated into the Original Agreement, will include the following non-standard items: groundcover, shrubs and irrigation, a bicycle rack, and curved concrete sidewalks. The Additional Improvements shall be installed in accordance with the plans outlined in **Exhibit "B"**.
 4. The AGENCY agrees to maintain the Additional Improvements in accordance with Part I of **Exhibit "C"** Maintenance Plan for Landscape Improvements, of the Original Agreement, and in compliance with:

SPECIFIC PROJECT SITE MAINTENANCE REQUIREMENTS AND RECOMMENDATIONS

All trees are intended to be maintained at mature height and spread.

- LI (Crape Myrtle)
- MF (Simpson Stopper)

SECTION: 86120000
COUNTY: BROWARD
STATE RD: 810
PERMIT: 2023-L-491-00007

Remove suckering growth from base and clear trunk areas on single trunked trees on a quarterly basis. Lift canopy only as necessary to provide a clear walking path.

Groundcover and shrubs lateral growth shall be maintained to prevent foliage from growing beyond the limits of the planting areas shown on the plan. Also, maintain a 6" setback from foliage to the back of curb, pavement, and/or sidewalk.

Groundcovers and shrubs shall be maintained at the following vertical heights:

- ARA (Perennial Peanut) – between 6"-12" ht.
- CHH (Horizontal Cocoplum) – 18" ht.
- ERN (Golden Creeper) – between 12"-14" ht.
- GAL (Thryallis) – 20" ht
- JUN (Parson's Juniper) – between 12"-14" ht.
- LAM (Trailing Lantana) – between 12"-14" ht.
- STJ (Native Porterweed) – between 12"-14" ht.
- ZAM (Coontie) – 20" ht.

No mechanical pruning equipment to be used with the Zamia. Hand pruning to remove dead fronds only.

Inspect monthly to always maintain full ground coverage for groundcovers and shrubs.

Inspect the irrigation system performance on a monthly basis to ensure the system's pressure is providing adequate coverage and clean or replace any irrigation nozzles that are not properly functioning.

Evaluate plant material on a monthly basis for pests and diseases. If required, follow the integrated pest management program established by the Agency to ensure healthy plants.

To avoid slip hazard, keep concrete walkway free of mulch, sand, leaves, etc.

LIST OF EXHIBITS FOR AMENDMENT #10:

- Exhibit A - Landscape Improvements Maintenance Boundaries
- Exhibit B - Landscape Improvement Plans
- Exhibit C - Resolution

Except as modified by this Amendment, all terms and conditions of the original Agreement and all Amendments thereto shall remain in full force and effect.

SECTION: 86120000
COUNTY: BROWARD
STATE RD: 810
PERMIT: 2023-L-491-00007

In Witness whereof, the parties hereto have executed this Amendment effective the day and year written and approved.

CITY OF COCONUT CREEK

By: _____ Date: _____
Sheila N. Rose, City Manager

Attest:

Joseph J. Kavanagh, City Clerk (SEAL)

Legal Review:

Terrill C. Pyburn, City Attorney

STATE OF FLORIDA
DEPARTMENT OF TRANSPORTATION

By: _____ Date: _____
John Krane, P.E.,
Director of Transportation Development

Attest:

Alia Channel, Executive Secretary (SEAL)

Legal Review:

Pamela G. Eidelberg, Office of the General Counsel Date: _____

SECTION: 86120000
COUNTY: BROWARD
STATE RD: 810
PERMIT: 2023-L-491-00007

EXHIBIT A

LANDSCAPE MAINTENANCE BOUNDARIES

I. ORIGINAL LIMITS OF INCLUSIVE LANDSCAPE MAINTENANCE AGREEMENT FOR State Road 810 (Hillsboro Boulevard):

M.P. 0.000 (East of State Road 7) to M.P. 1.997 (East of State Road 91)

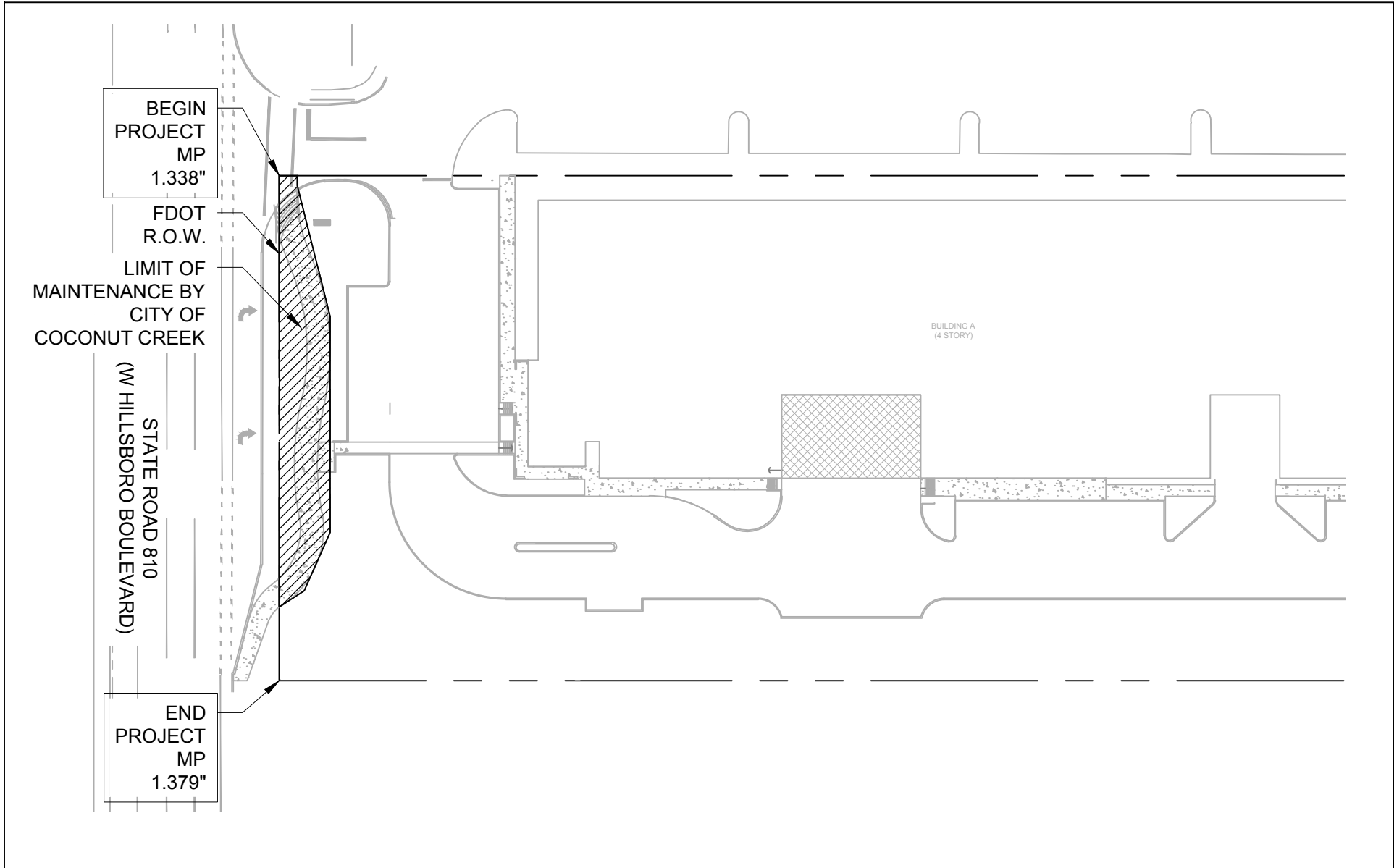
II. LIMITS OF LANDSCAPE IMPROVEMENTS FOR AMENDMENT #10:

State Road 810 (W. Hillsboro Boulevard) from M.P. 1.338 to M.P. 1.379

III. LANDSCAPE IMPROVEMENTS MAINTENANCE RESPONSIBILITIES MAP FOR AMENDMENT #10:

*Please See Attached

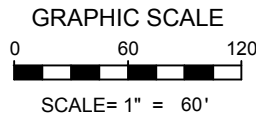
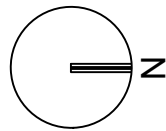
***All other limits of the Original Agreement and Amendments shall apply.**



4191 West Hillsboro Blvd.
Coconut Creek, FL 33073

Florida Certificate of
Authorization # - 7928

DATE: 08/07/2023
SCALE: AS NOTED
DRAWN BY: KG
DESIGN BY: MP
CHECKED BY: MP



NOTE: PRINTED DRAWING SIZE MAY HAVE
CHANGED FROM ORIGINAL. VERIFY
SCALE USING BAR SCALE ABOVE.

**LANDSCAPE IMPROVEMENT
MAINTENANCE BOUNDARY MAP
CITY OF COCONUT CREEK**

LM-001

SECTION: 86120000
COUNTY: BROWARD
STATE RD: 810
PERMIT: 2023-L-491-00007

EXHIBIT B

LANDSCAPE IMPROVEMENT PLANS

The AGENCY agrees to install the landscape improvements in accordance with the plans and specifications attached hereto and incorporated herein.

Please see attached plans prepared by: Michael J. Phillips
KEITH

Date: July 6, 2023

REFERENCES (4-27-20)

This reference list is provided as a courtesy. The list may not contain the most current websites. The most current references must be accessed for up-to-date information.

Accessible Sidewalk (ADA) <http://www.access-board.gov/guidelines-and-standards/streets-sidewalks>

Americans with Disabilities Act (ADA) (ADAAG) http://www.ada.gov/2010ADASTandards_index.htm

American National Standard Institute, *ANSI A300, (Part 1) for Tree Care Operations – Trees, Shrub, and Other Woody Plant Maintenance – Standard Practices (Pruning)*, available for purchase <http://webstore.ansi.org>

Florida Department of Agriculture and Consumer Services, Division of Plant Industry, *Florida Grades and Standards for Nursery Plants 2015* <http://www.freshfromflorida.com/Divisions-Offices/Plant-Industry/Bureaus-and-Services/Bureau-of-Plant-and-Apiary-Inspection>

Florida Department of Community Affairs (DCA), *Florida Board of Building Codes & Standards, 2017 Florida Building Code, Chapter 11 Florida Accessibility Code for Building Construction Part A*
http://www.floridabuilding.org/fbc/workgroups/Accessibility_Code_Workgroup/Documentation/CHAPTER_11_w_florida_specifics.htm

Florida Department of Transportation, *Program Management, Maintenance Specifications Workbook Supplemental Specifications, Section 580 Landscape Installation*
<http://www.fdot.gov/programmanagement/Maintenance/2019Jan/default.shtm>

Florida Department of Transportation, *FDOT Standard Plans for Design, Construction, Maintenance and Utility Operations on the State Highway System, Index 580-001 Landscape Installation*
<http://www.fdot.gov/design/standardplans/current/IDx/580-001.pdf>

Florida Department of Transportation, *FDOT Design Manual for Design, Construction, Maintenance and Utility Operations on the State Highway System, Chapter 212.11 Clear Sight Triangles*
<http://www.fdot.gov/roadway/FDM/current/2018FDM212Intersections.pdf>

Florida Department of Transportation, *FDOT Design Manual for Design, Construction, Maintenance and Utility Operations on the State Highway System, Chapter 215.2.3 Clear Zone Criteria and 215.2.4 Lateral Offset, Table 215.2.1 Clear Zone Width Requirements, Table 215.2.2 Lateral Offset Criteria (for Trees)*
<http://www.fdot.gov/roadway/FDM/current/2018FDM215RoadsideSafety.pdf>

Florida Department of Transportation, *FDOT Standard Plans for Design, Construction, Maintenance and Utility Operations on the State Highway System, Index Series 102-600 Traffic Control through Work Zones*
<http://www.fdot.gov/design/standardplans/current/IDx/102-600.pdf>

Department of Transportation, Landscape Architecture Website www.MyFloridaBeautiful.com

Florida Department of Transportation, *Maintenance Rating Program Handbook*
<http://www.dot.state.fl.us/statemaintenanceoffice/MaintRatingProgram.shtm>

Florida Department of Transportation Outdoor Advertising Database <http://www2.dot.state.fl.us/rightofway/>

Florida Exotic Pest Plant Council Invasive Plant Lists <http://www.fleppc.org/list/list.htm>

Florida Irrigation Society <http://www.fisstate.org>

Florida Power and Light (FPL), *Plant the Right Tree in the Right Place*
http://www.fpl.com/residential/trees/right_tree_right_place.shtml

PART II.
SPECIFIC PROJECT SITE MAINTENANCE REQUIREMENTS AND RECOMMENDATIONS

The R.L.A. of Record shall formulate specific language as directed above and/or by editing the following optional template below to ensure compliance with the project's maintenance performance requirements and to achieve the "DESIGN INTENT".

DO NOT USE ALL OF THE FOLLOWING OPTIONAL TEMPLATE EXAMPLES if the project is NOT proposing that item within the FDOT right of way.

All trees are intended to be maintained at mature height and spread.

LI (Crape Myrtle)

MF (Simpson Stopper)

Remove suckering growth from base and clear trunk areas on single trunked trees on a quarterly basis. Lift canopy only as necessary to provide a clear walking path.

Groundcover and shrubs lateral growth shall be maintained to prevent foliage from growing beyond the limits of the planting areas shown on the plan. Also, maintain a 6" setback from foliage to the back of curb, pavement, and/or sidewalk.

Groundcovers and shrubs shall be maintained at the following vertical heights:

ARA (Perennial Peanut) – between 6"-12" ht.

CHH (Horizontal Cocoplum) – 18" ht.

ERN (Golden Creeper) – between 12"-14" ht.

GAL (Thryallis) – 20" ht

JUN (Parson's Juniper) – between 12"-14" ht.

LAM (Trailing Lantana) – between 12"-14" ht.

STJ (Native Porterweed) – between 12"-14" ht.

ZAM (Coontie) – 20" ht.

No mechanical pruning equipment to be used with the Zamia. Hand pruning to remove dead fronds only.

Inspect monthly to always maintain full ground coverage for groundcovers and shrubs.

Inspect the irrigation system performance on a monthly basis to ensure the system's pressure is providing adequate coverage and clean or replace any irrigation nozzles that are not properly functioning.

Evaluate plant material on a monthly basis for pests and diseases. If required, follow the integrated pest management program established by the Agency to ensure healthy plants.

To avoid slip hazard, keep concrete walkway free of mulch, sand, leaves, etc.

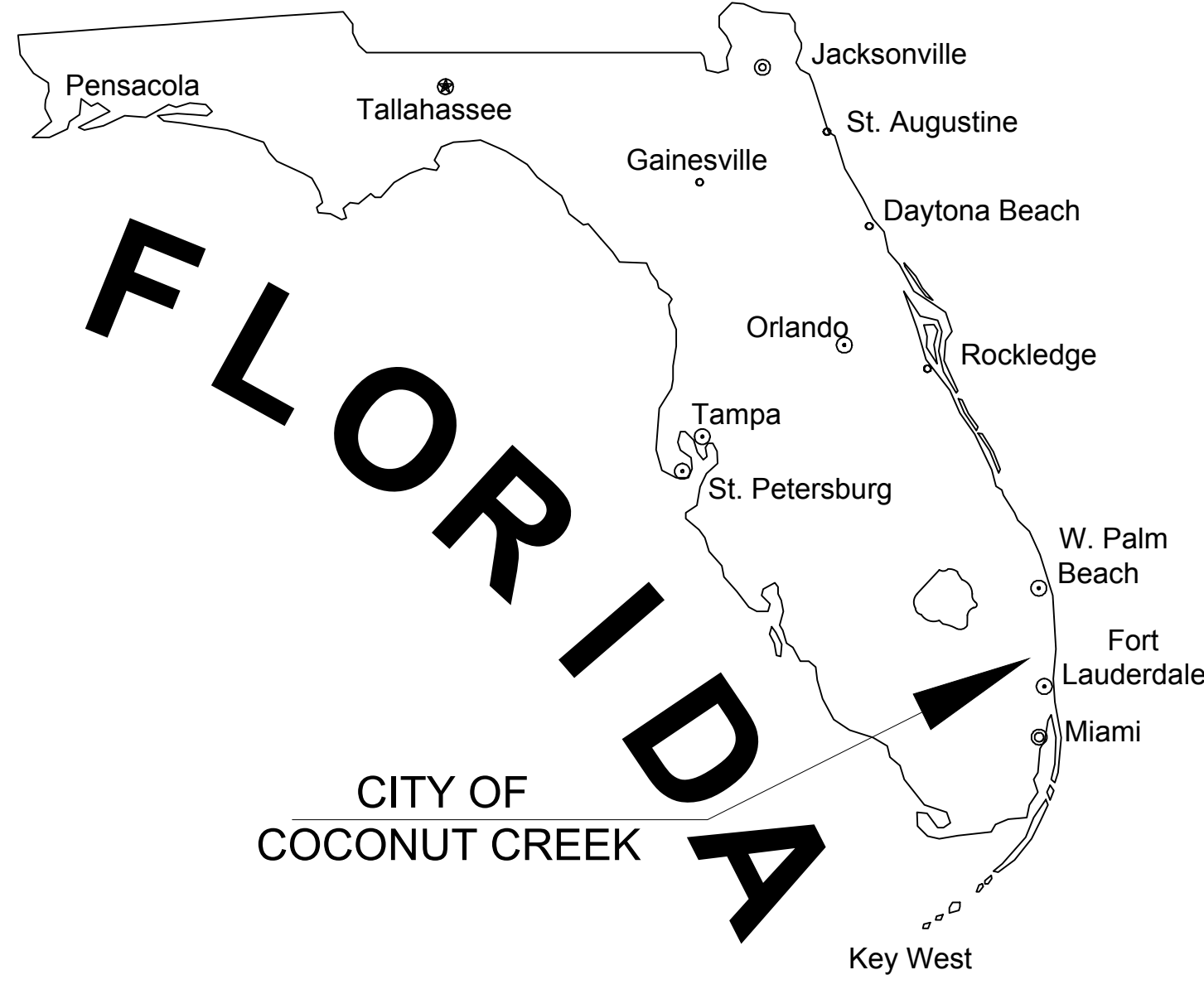
FDOT LANDSCAPE PERMIT

FOR

4161 HILLSBORO STORAGE

4191 W HILLSBORO BLVD.
CITY OF COCONUT CREEK
BROWARD COUNTY, FLORIDA

INDEX OF SHEETS	
SHEET No.	SHEET TITLE
GI-000	COVER SHEET
LD-101	TREE DISPOSITION PLAN
LP-001	LANDSCAPE NOTES
LP-002	LANDSCAPE SCHEDULE & DATA TABLE
LP-100	FDOT CLEAR SIGHT LINE EXHIBIT
LP-101	LANDSCAPE PLAN
LP-501	LANDSCAPE DETAILS
LI-101	IRRIGATION PLAN
LI-501	IRRIGATION DETAILS



LAND DESCRIPTION:

(PARCEL 1)

PARCEL "A" OF WORKINGMAN'S NURSERY, ACCORDING TO THE PLAT THEREOF RECORDED IN PLAT BOOK 126, PAGE 22 OF THE PUBLIC RECORDS OF BROWARD COUNTY, FLORIDA, LESS THAT PORTION CONVEYED TO THE STATE OF FLORIDA DEPARTMENT OF TRANSPORTATION BY THE WARRANTY DEED RECORDED IN OFFICIAL RECORDS BOOK 33601, PAGE 1736 OF THE PUBLIC RECORDS OF BROWARD COUNTY, FLORIDA.

(PARCEL 2)

NON-EXCLUSIVE EASEMENT FOR INGRESS AND EGRESS FOR THE BENEFIT OF PARCEL 1 ABOVE CREATED BY, AND MORE PARTICULARLY DESCRIBED IN EXHIBIT C OF THE MUTUAL INGRESS AND EGRESS EASEMENT BETWEEN FIRST BAPTIST CHURCH OF COCONUT CREEK AND LEDER HILLSBORO COMPANY, LTD. RECORDED IN OFFICIAL RECORDS BOOK 32117, PAGE 1578, LESS AND EXCEPT THAT PORTION CONVEYED TO THE STATE OF FLORIDA DEPARTMENT OF TRANSPORTATION BY THE WARRANTY DEED RECORDED IN OFFICIAL RECORDS BOOK 33445, PAGE 162, ALL OF THE PUBLIC RECORDS OF BROWARD COUNTY, FLORIDA.

(PARCEL 3)

NON-EXCLUSIVE EASEMENT FOR INGRESS AND EGRESS FOR THE BENEFIT OF PARCEL 1 ABOVE CREATED BY, AND MORE PARTICULARLY DESCRIBED IN EXHIBIT B OF THE DECLARATION OF RESTRICTIVE COVENANTS FOR PRIVATE PAVED ROADWAYS AND ACCESS BY LEDER HILLSBORO, LTD. AND NEW LIFE COMMUNITY CHURCH OF BROWARD COUNTY, INC. RECORDED IN OFFICIAL RECORDS BOOK 33516, PAGE 122 OF THE PUBLIC RECORDS OF BROWARD COUNTY, FLORIDA, LESS AND EXCEPT THAT PORTION LYING WITHIN SAID PARCEL 1.

SAID LANDS LYING IN BROWARD COUNTY, FLORIDA AND CONTAINING 126,976 SQUARE FEET (2.9150 ACRES) MORE OR LESS.



LOCATION MAP
SECTION 5, TOWNSHIP 48 SOUTH, RANGE 42 EAST

- FDOT R.O.W. REQUIREMENTS:**
- DESIGN SPEED: SR-7 (US 441) DESIGN SPEED = 45 MPH
 - VERTICAL CLEARANCE: MIN. PLANTING VERTICAL CLEARANCE PER FDOT MAINTENANCE RATING PROGRAM:
SIDEWALK = 8.5' VERTICAL CLEARANCE
ROADWAY = 14.5' VERTICAL CLEARANCE

THESE PLANS MAY HAVE BEEN REDUCED IN SIZE BY REPRODUCTION. THIS MUST BE CONSIDERED WHEN OBTAINING SCALED DATA.

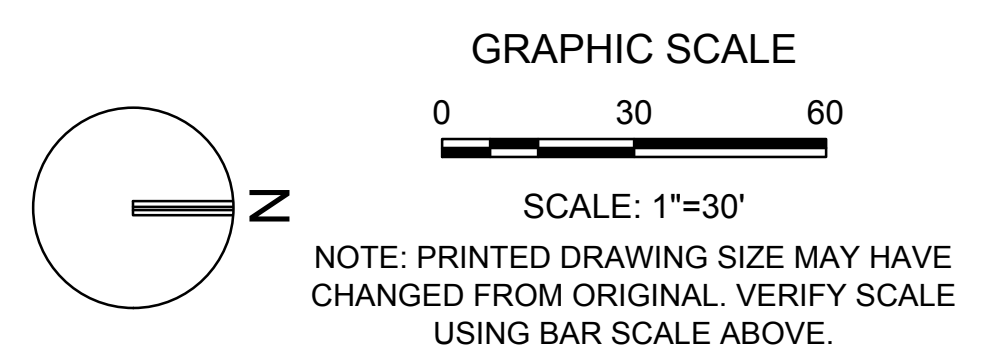
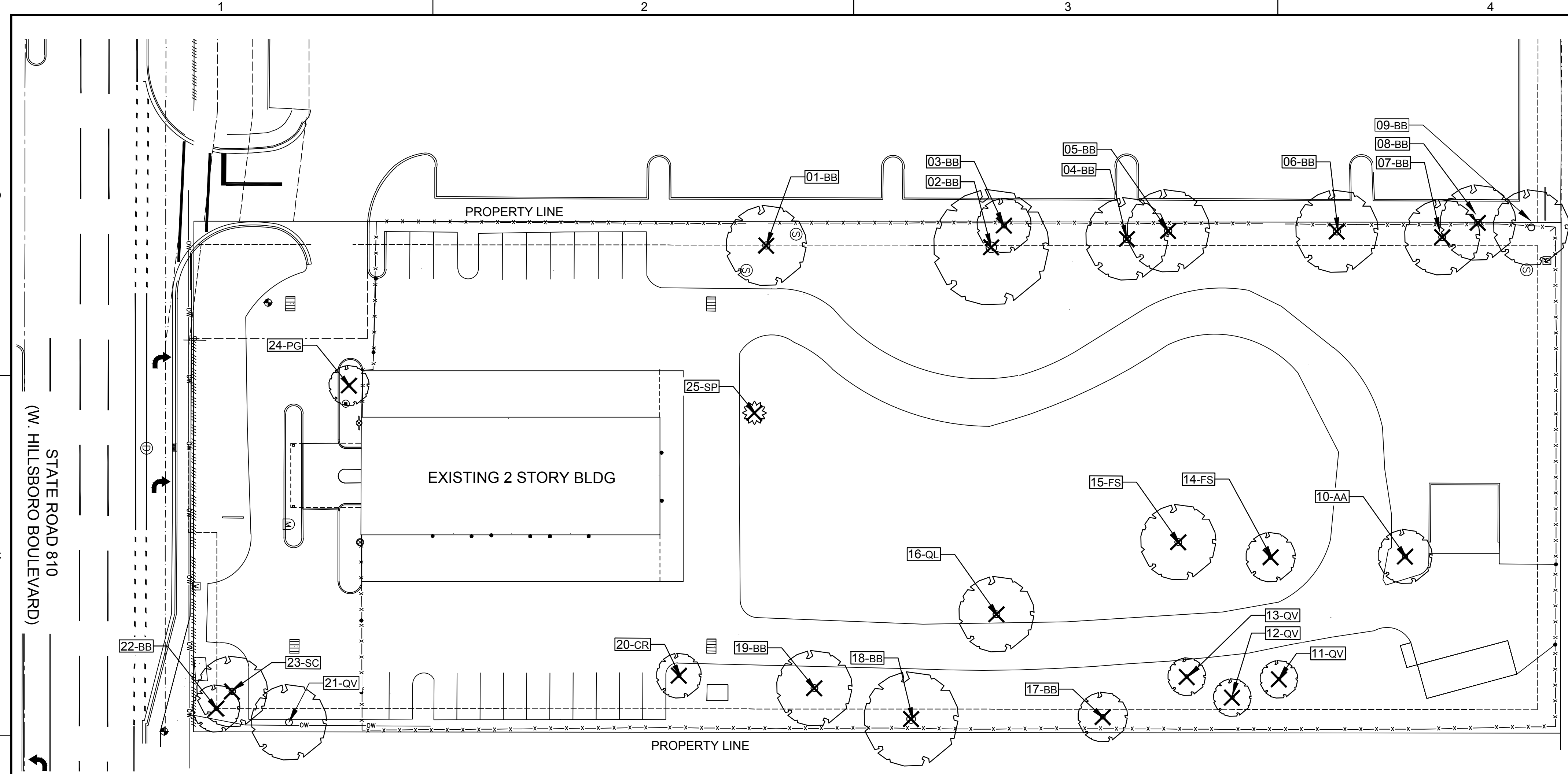


PREPARED FOR:
LEDER HILLSBORO OFFICE
4755 TECHNOLOGY WAY, SUITE 203
BOCA RATON, FL 33431



PROJECT No. 09675.01
ISSUE DATE: JULY 2023

MICHAEL J. PHILLIPS, P.L.A.
FLORIDA REG. NO. LA0001540
(FOR THE FIRM)



KEITH
 Corporate Office
 301 East Atlantic Boulevard
 Pompano Beach, Florida 33060-6643
 (954) 788-3400

Miami-Dade County
 2160 NW 82 Avenue
 Doral, Florida 33122

Palm Beach County
 120 N Federal Highway, Suite 208
 Lake Worth, Florida 33460

Orange County
 2948 E Livingston Street
 Orlando, Florida 32803

State of Florida Certificate of
 Authorization Number - 7928

BID / CONTRACT NO. :

REVISIONS		
NO.	DESCRIPTION	DATE

**PRELIMINARY PLAN
 NOT FOR CONSTRUCTION**
 THESE PLANS ARE NOT FULLY PERMITTED
 AND ARE SUBJECT TO REVISIONS MADE
 DURING THE PERMITTING PROCESS.
 RESPONSIBILITY FOR THE USE OF THESE
 PLANS PRIOR TO OBTAINING PERMITS
 FROM ALL AGENCIES HAVING JURISDICTION
 OVER THE PROJECT WILL FALL SOLELY
 UPON THE USER.

**LEDER
 4161 HILLSBORO
 STORAGE**

SCALE:	AS NOTED
DATE ISSUED:	07/06/2023
DRAWN BY:	KG
DESIGNED BY:	MP
CHECKED BY:	MP, KS

This item has been digitally signed and sealed by Michael J. Phillips, on the date below using a Digital Signature.

Printed copies of this document are not considered signed and sealed and the signature must be verified on any electronic copies.

MICHAEL J. PHILLIPS, R.L.A.
 FLORIDA REG. NO. LA0001540
 (FOR THE FIRM)

SHEET TITLE

TREE DISPOSITION PLAN

SHEET NUMBER

LD-101

PROJECT NO. **09675.01**

Sunshine811
 Call 811 or www.sunshine811.com two full business days before digging to have utilities located and marked.
 Check positive response codes before you dig!

TREE DISPOSITION TABLE
 PROJECT #: 09675.01 PROJECT NAME: Leder Hillsboro Blvd.

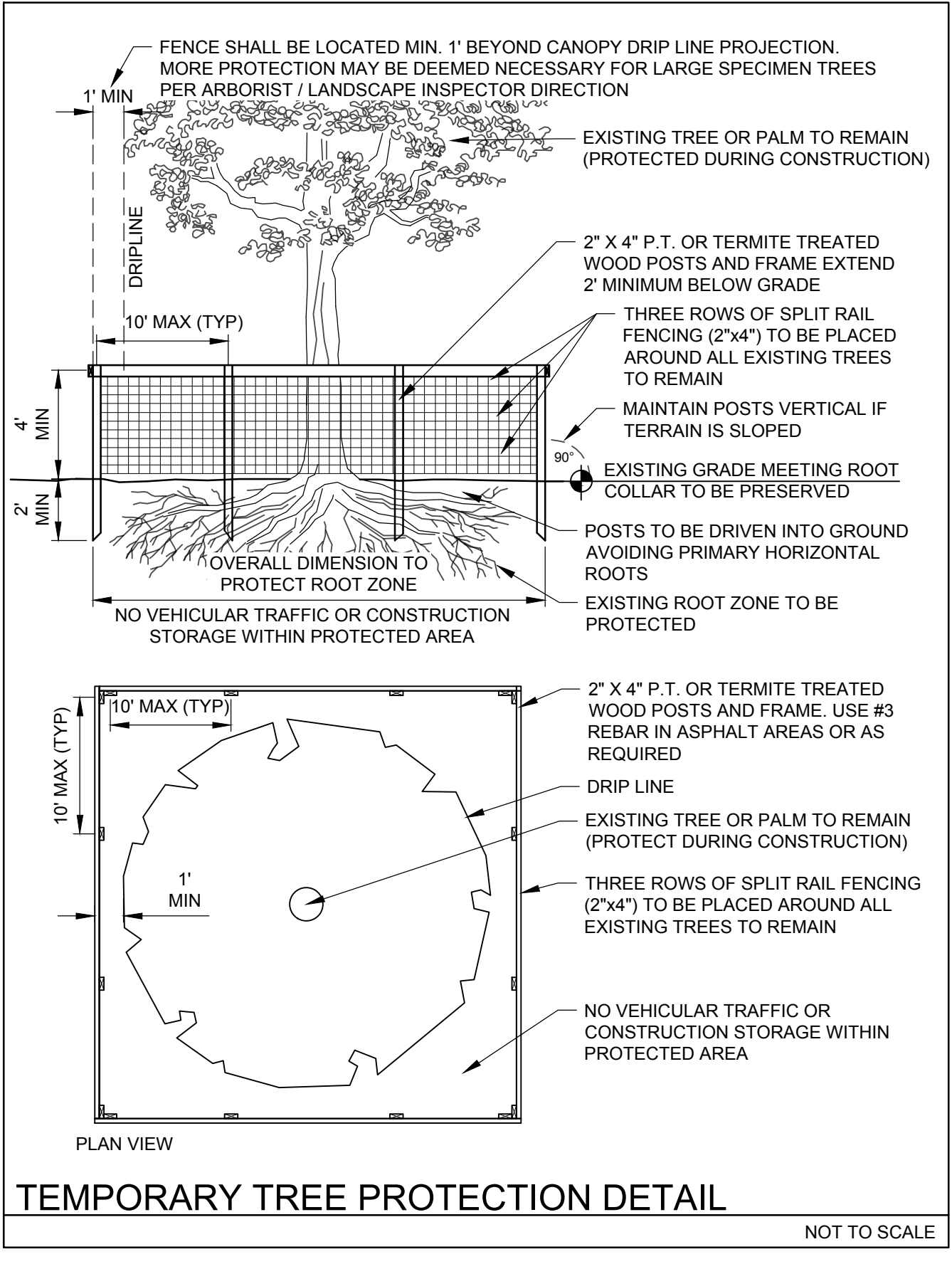
TREE #	COMMON NAME	SCIENTIFIC NAME	DBH IN.	HT. FT.	CMPY. FT.	TREE % CONDITION	TREE DISPOSITION	TREE CANOPY S.F.	COMMENTS
1	BLACK OLIVE	"Bucida buceras"	13	30	35	50	REMOVE	962	poor branching, inclusions, leaning, storm damage
2	BLACK OLIVE	"Bucida buceras"	22	35	50	40	REMOVE	1962	TD, BD, shared canopy, storm damage, dieback
3	BLACK OLIVE	"Bucida buceras"	14	35	18	25	REMOVE	254	TD, BD, shared canopy, storm damage, dieback
4	BLACK OLIVE	"Bucida buceras"	18	35	35	50	REMOVE	962	TD, BD, shared canopy, storm damage, dieback
5	BLACK OLIVE	"Bucida buceras"	13	30	35	50	REMOVE	962	BD, shared canopy, shaded, storm damage
6	BLACK OLIVE	"Bucida buceras"	12	30	35	60	REMOVE	962	TD, BD, shared canopy, storm damage
7	BLACK OLIVE	"Bucida buceras"	15	30	30	60	REMOVE	706	BD, shared canopy, storm damage, dieback
8	BLACK OLIVE	"Bucida buceras"	12	30	30	40	REMOVE	706	BD, shared canopy, inclusions, poor branching
9	BLACK OLIVE	"Bucida buceras"	15	30	30	40	REMAIN	706	BD, shared canopy, co-dom, inclusions, poor branching
10	EARLEAF ACACIA	"Acacia auriculiformis"	19	30	20	65	REMOVE	314	invasive exotic, co-dom, damaged
11	LIVE OAK	"Quercus virginiana"	5	20	12	50	REMOVE	113	TD
12	LIVE OAK	"Quercus virginiana"	2,3	12	10	50	REMOVE	79	multi-stem,
13	LIVE OAK	"Quercus virginiana"	5	12	8	50	REMOVE	50	TD, BD
14	FICUS	"Ficus spp."	15	30	20	30	REMOVE	314	TD, BD, multi-stem
15	FICUS	"Ficus spp."	8,8	30	30	40	REMOVE	706	co-dom, BD, dieback
16	LAUREL OAK	"Quercus laurifolia"	16	40	30	15	REMOVE	706	co-dom, BD, poor branching, severe dieback
17	BLACK OLIVE	"Bucida buceras"	9	20	20	20	REMOVE	314	storm damage, top half snapped off
18	BLACK OLIVE	"Bucida buceras"	20	40	40	50	REMOVE	1256	TD, BD, shared canopy, shaded, dieback
19	BLACK OLIVE	"Bucida buceras"	18	30	30	40	REMOVE	706	TD, BD, shared canopy, shaded, dieback
20	PITCH APPLE	"Clusia rosea"	12	20	16	30	REMOVE	201	TD, BD, multi-stem
21	LIVE OAK	"Quercus virginiana"	16	25	30	50	REMAIN	706	BD, shared canopy, roots/paving
22	BLACK OLIVE	"Bucida buceras"	11	20	16	50	REMOVE	201	BD, shared canopy
23	JAMBOLAN PLUM	"Syzgium cumini"	22	25	25	50	REMOVE	N/A	BD, shared canopy
24	YEW	"Podocarpus gracillior"	11	18	14	40	REMOVE	154	BD, poor branching, dieback
25	CABBAGE PALM	"Sabal palmetto"	10	20	12	60	REMOVE	113	
								12,590	Total S.F. canopy of trees removed

REPLACEMENT CATEGORY	EQUIVALENT REPLACEMENT VALUE	PROVIDED QTY:	PROVIDED CANOPY	
CATEGORY 1 TREES	(300 SF)	66	=	19,800 SF
CATEGORY 2 TREES	(150 SF)	9	=	1,350 SF
CATEGORY 3 TREES	(100 SF)	50	=	5,000 SF
CATEGORY 4 TREES	(50 SF)	9	=	450 SF
				12,590 SF TOTAL CANOPY LOSS
				26,600 SF TOTAL CANOPY REPLACEMENT

TREE DISPOSITION LEGEND:

△	EXISTING TREE/PALM TO REMAIN (NO SYMBOL); TO BE PROTECTED DURING CONSTRUCTION
△	EXISTING TREE/PALM TO RELOCATE REFER TO LANDSCAPE PLAN FOR NEW LOCATION
×	EXISTING TREE/PALM TO REMOVE REMOVE ALL CAT 1 INVASIVE EXOTICS (EX: BRAZ. PEPPER)
XXX-XX	EXISTING TREE/PALM NUMBER REFER TO TREE DISPOSITION TABLE ON LD-102

- TREE DISPOSITION NOTES:**
- EXISTING TREES TO REMAIN SHALL BE TRIMMED PER ANSI-A300 STANDARDS, REMOVING WEAKEST RUBBING BRANCHES AND DEAD BRANCHES, BUT RETAINING 80% OF FOLIAGE. LARGE TREES SHALL HAVE LOWER BRANCHES CLEARED UP TO 8'.
 - SYMBOLS MAY BE SHOWN OFFSET FROM ACTUAL TREE LOCATION FOR CLARITY.
 - CONTACT LANDSCAPE ARCHITECT / ISA CERTIFIED ARBORIST FOR CLARIFICATION ON ANY DISCREPANCIES.
 - TRIMMING AND ANY NECESSARY ROOT PRUNING SHALL BE PERFORMED OR SUPERVISED BY A CERTIFIED ARBORIST.
 - ALL TREE WORK REQUIRE PERMITTING BY A REGISTERED COUNTY TREE TRIMMER.
 - BUBBLERS SHALL BE PROVIDED FOR ALL RELOCATED TREES AND PALMS.
 - REMOVAL OF ANY TREES OR PALMS WILL REQUIRE A WRITTEN "TREE REMOVAL PERMIT" FROM THE LOCAL GOVERNING AGENCY PRIOR TO REMOVAL. CONFIRM WITH LOCAL GOVERNING AGENCY THAT TREES CLASSIFIED AS NUISANCE/EXOTIC INVASIVE MAY BE EXEMPT.
 - ALL TREES AND PLANT MATERIAL TO REMAIN SHALL BE PROTECTED DURING CONSTRUCTION. REFER TO TREE PROTECTION DETAIL. THE CONTRACTOR SHALL TAKE EXTRA CAUTION TO PREVENT ANY DAMAGE TO THE TRUNK, ROOT ZONES AND GRADE.



SCOPE
1. The location of plants, as shown on the plans, is approximate. The final locations may be adjusted slightly to accommodate unforeseen field conditions, to comply with safety setback criteria, to avoid creating unsafe sight conditions, or as otherwise directed or approved by the Landscape Architect / owner in writing.

BIDDING
1. Contractor has liability insurance including Owner and Landscaper as insured's in excess of \$10,000 as well as Worker's Compensation.

GENERAL LANDSCAPE NOTES
1. Plants grown in containers prior to installation shall be removed from their containers before they are planted in the ground and have circling roots removed.

EXISTING TREES
1. Existing trees designated to remain shall be protected during all construction phases.

IRRIGATION
1. Any Irrigation Notes and specifications included in Irrigation Sheets govern over the following Irrigation Notes.

UTILITIES / CLEARANCES
1. The contractor shall be responsible for determining the location of and avoid and protect utility lines, buried cables, and other utilities.

NEW Tree / Shrub Container Size
1 Gal 2 Gal 3 Gal 4 Gal 7 Gal 15 Gal 24" Box
Installation: 1 1 to 2 2 to 3 2 to 3 3 to 5 7 to 10 15 to 24

INSPECTION & ACCEPTANCE
1. Notify the governing Agency if required and Landscape Architect of commencement.

MISCELLANEOUS
1. All work to be done in a professional manner.

ABBREVIATIONS IN NOTES AND PLANS
U.N.O. = Unless Otherwise Noted
L.A. = Landscape Architect
S.F. = Square Feet
STD = Standard (single trunk)
B&B = Balled and Burtopped
BLDG DEP = Building Department
RFI = Request for Information
FPL = Florida Power & Light
C.O. = Certificate of Occupancy
ISA CA or ISA Arborist = International Society of Arboriculture Certified Arborist



Corporate Office
301 East Atlantic Boulevard
Pompano Beach, Florida 33060-6643
(954) 788-3400

Miami-Dade County
2160 NW 82 Avenue
Doral, Florida 33122

Palm Beach County
120 N Federal Highway, Suite 208
Lake Worth, Florida 33460

Orange County
2948 E Livingston Street
Orlando, Florida 32803

State of Florida Certificate of
Authorization Number - 7928

REVISIONS		
NO.	DESCRIPTION	DATE

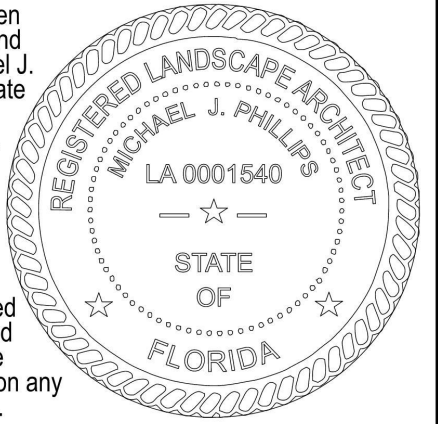
**PRELIMINARY PLAN
NOT FOR CONSTRUCTION**

THESE PLANS ARE NOT FULLY PERMITTED
AND ARE SUBJECT TO REVISIONS MADE
DURING THE PERMITTING PROCESS.
RESPONSIBILITY FOR THE USE OF THESE
PLANS PRIOR TO OBTAINING PERMITS
FROM ALL AGENCIES HAVING JURISDICTION
OVER THE PROJECT WILL FALL SOLELY
UPON THE USER.

LEDER
4161 HILLSBORO
STORAGE

SCALE: AS NOTED
DATE ISSUED: 07/06/2023
DRAWN BY: KG
DESIGNED BY: MP
CHECKED BY: MP, KS

This item has been digitally signed and sealed by Michael J. Phillips, on the date below using a Digital Signature.



Printed copies of this document are not considered signed and sealed and the signature must be verified on any electronic copies.

MICHAEL J. PHILLIPS, R.L.A.
FLORIDA REG. NO. LA0001540
(FOR THE FIRM)

SHEET TITLE

**LANDSCAPE
NOTES**

SHEET NUMBER
LP-001

PROJECT NO. **09675.01**

DESIGN SPEED = 45 MPH

Drawn by: F:\09675.01 - 4161 Hillsboro LLC - Leder\Graphic\Landscape Architect\MichaelJ\DWG\09675.01_DFDOT_LP-001.dwg Layout Name: LP-001 Printed on: 07/06/2023 2:27 PM



Corporate Office
301 East Atlantic Boulevard
Pompano Beach, Florida 33060-6643
(954) 788-3400

Miami-Dade County
2160 NW 82 Avenue
Doral, Florida 33122

Palm Beach County
120 N Federal Highway, Suite 208
Lake Worth, Florida 33460

Orange County
2948 E Livingston Street
Orlando, Florida 32803

State of Florida Certificate of Authorization Number - 7928

BID / CONTRACT NO. :

REVISIONS

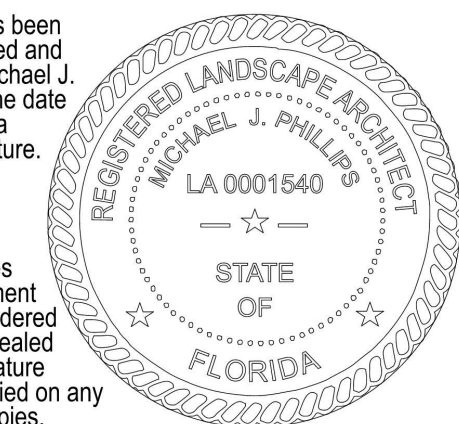
NO.	DESCRIPTION	DATE

**PRELIMINARY PLAN
NOT FOR CONSTRUCTION**
THESE PLANS ARE NOT FULLY PERMITTED AND ARE SUBJECT TO REVISIONS MADE DURING THE PERMITTING PROCESS. RESPONSIBILITY FOR THE USE OF THESE PLANS PRIOR TO OBTAINING PERMITS FROM ALL AGENCIES HAVING JURISDICTION OVER THE PROJECT WILL FALL SOLELY UPON THE USER.

**LEDER
4161 HILLSBORO
STORAGE**

SCALE:	AS NOTED
DATE ISSUED:	07/06/2023
DRAWN BY:	KG
DESIGNED BY:	MP
CHECKED BY:	MP, KS

This item has been digitally signed and sealed by Michael J. Phillips, on the date below using a Digital Signature.



Printed copies of this document are not considered signed and sealed and the signature must be verified on any electronic copies.

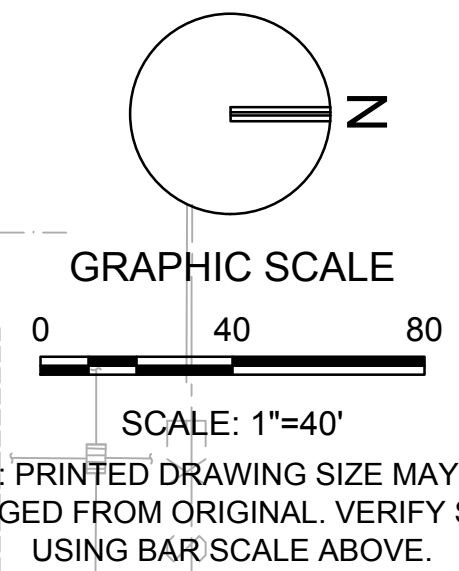
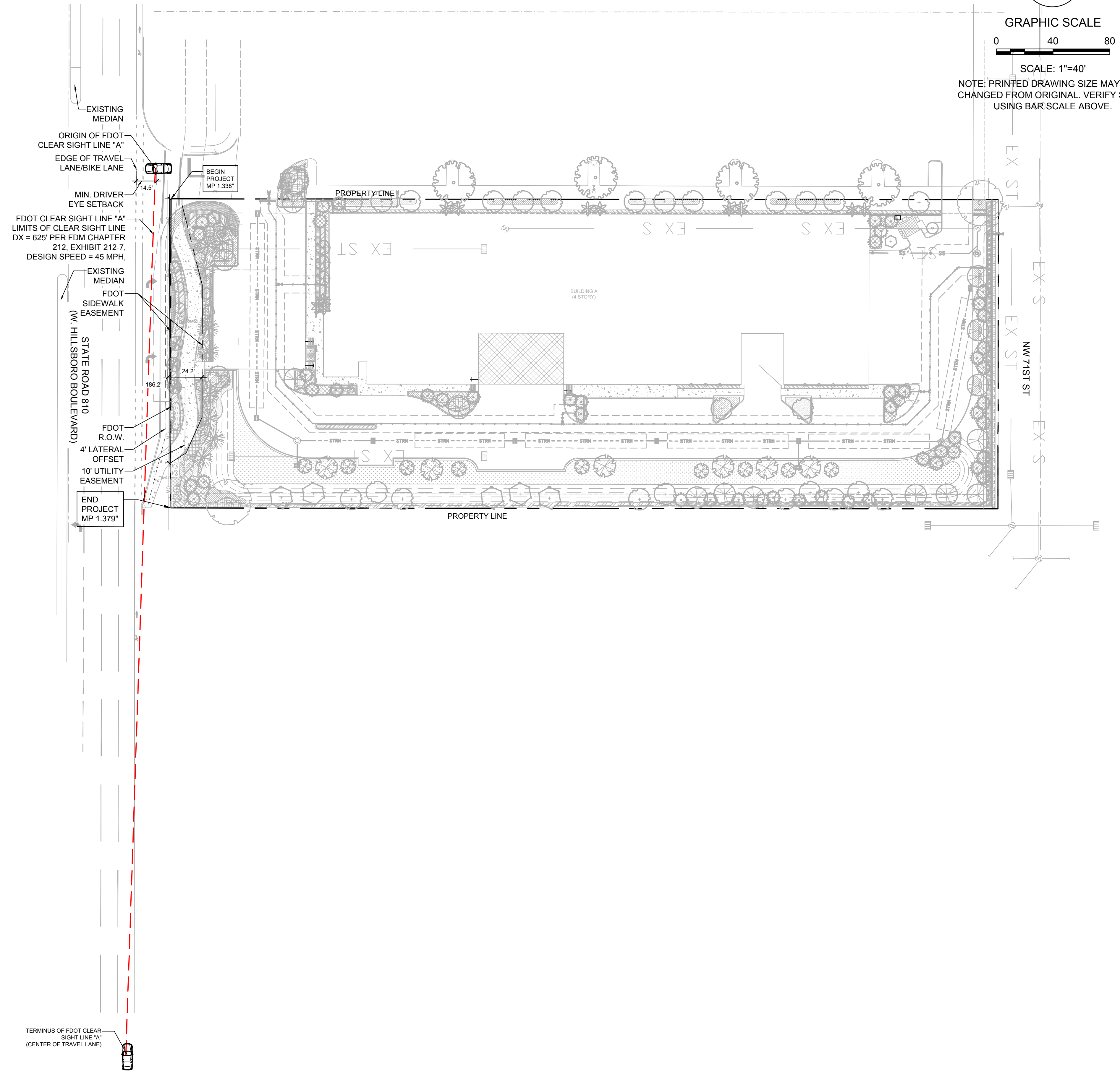
MICHAEL J. PHILLIPS, R.L.A.
FLORIDA REG. NO. LA0001540
(FOR THE FIRM)

SHEET TITLE
**FDOT CLEAR SIGHT
LINE EXHIBIT**

SHEET NUMBER
LP-100

PROJECT NO. **09675.01**

D
C
B
A



Sunshine811
Call 811 or www.sunshine811.com two full business days before digging to have utilities located and marked.
Check positive response codes before you dig!

Drawing name: P:\09675.01 - 4161 Hillsboro.LLC - Leder Group.Landscape Architecture\FDOT Permits\09675.01_FDOT_LP-100.dwg Layout Name: LP-100 Plotted on: Jul 06, 2023 - 2:53pm

FDOT GENERAL NOTES:

- GOVERNING STANDARD PLANS:
FLORIDA DEPARTMENT OF TRANSPORTATION, FY 2022-23 STANDARD PLANS FOR ROAD AND BRIDGE CONSTRUCTION AND APPLICABLE INTERIM REVISIONS (IRS) ARE AVAILABLE AT THE FOLLOWING WEBSITE: <https://www.fdot.gov/design/standardplans>
- GOVERNING STANDARD SPECIFICATIONS:
FLORIDA DEPARTMENT OF TRANSPORTATION, JULY 2022 STANDARD SPECIFICATIONS FOR ROAD AND BRIDGE CONSTRUCTION AT THE FOLLOWING WEBSITE: <https://www.fdot.gov/programmanagement/implemented/specbooks>
- CONTRACTOR SHALL REPAIR ALL DAMAGE DONE TO FDOT PROPERTY DURING DEMOLITION, RELOCATION &/OR INSTALLATION ACTIVITIES AT HIS SOLE EXPENSE.
- ANY PLANT MATERIAL SUBSTITUTION WITHIN OR IMPACTING THE FDOT RIGHT OF WAY WHETHER REQUESTED BY THE CONTRACTOR, OWNER, LANDSCAPE ARCHITECT OR OTHER WILL NEED TO GET APPROVAL FROM THE FDOT DISTRICT LANDSCAPE ARCHITECT.

FDOT PLANTING NOTES:

- FOR THE PORTION OF LANDSCAPE PLANT MATERIAL THAT WILL BE INSTALLED WITHIN THE FDOT RIGHT OF WAY, LANDSCAPE INSTALLATION SHALL COMPLY WITH CURRENT APPLICABLE FDOT MAINTENANCE SPECIFICATION 580. ONLINE REFERENCE: <https://fdotwww.blob.core.windows.net/sitefinity/docs/default-source/design/standardplans/2022/idx/580-001.pdf>
- FOR THE PORTION OF LANDSCAPE PLANT MATERIAL THAT WILL BE INSTALLED WITHIN THE FDOT RIGHT OF WAY REFER TO THE FDOT STANDARD PLANS INDEX 580-001 LANDSCAPE INSTALLATION. ONLINE REFERENCE: <https://fdotwww.blob.core.windows.net/sitefinity/docs/default-source/design/standardplans/2022/idx/580-001.pdf>
- CYPRESS MULCH IS NOT PERMITTED ON FDOT RIGHT OF WAY. MULCH PERMITTED TO BE USED ARE HARDWOOD MULCH (CONTAINING NO CYPRESS PRODUCTS), RECYCLED MULCH OR APPROVED EQUAL, CERTIFIED BY THE MULCH AND SOIL COUNCIL (MSC). SUBMIT PROOF OF CERTIFICATION TO THE FDOT DISTRICT OPERATIONS PERMIT LANDSCAPE INSPECTOR UPON INSPECTION.
- SODDED AREAS WILL BE IN ACCORDANCE WITH STANDARD PLANS INDEX 570-010 AND STANDARD SPECIFICATIONS SECTION 162, 570, 981, 982, 983, 987 OF THE DEPARTMENT'S LATEST EDITION OF GOVERNING DESIGN STANDARDS AND STANDARD SPECIFICATIONS. ALL DISTURBED AREAS WILL BE SODDED WITHIN ONE(1) WEEK OF INSTALLATION OF SAID PERMITTED WORK.

FDOT R.O.W. REQUIREMENTS:

- DESIGN SPEED = 45 MPH
- VERTICAL CLEARANCE: MIN. PLANTING VERTICAL CLEARANCE PER FDOT MAINTENANCE RATING PROGRAM:
SIDEWALK = 8.5' VERTICAL CLEARANCE
ROADWAY = 14.5' VERTICAL CLEARANCE

CITY STANDARD LANDSCAPE NOTES

- All landscape and specifications shall meet or exceed the minimum requirements as provided in the City of Coconut Creek Land Development Code. Plans are incomplete without written notes and specifications.
- All planting material shall meet or exceed Florida Grade #1 as specified in Grades and Standards for Nursery Plants, current edition. Trees shall not be tipped, topped, or shaped prior to installation.
- Landscape shall be placed to edge of abutting streets, canals, lakes or other lands.
- All mechanical equipment, air conditioning, irrigation pump stations and equipment, FPL transformers, pool pumps, etc., must be screened on three (3) sides by landscape shrubs.
NOTE: The quantity of screening shrubs is in addition to the required number of shrubs as provided in the code calculation table. All screening shrubs shall be planted for proper operation of equipment being screened and/or per the requirements of the utility as necessary. All hedge material required for screening purposes shall be planted with branches touching. Adjust on-center spacing as necessary and/or provide additional plants to provide an adequate screen.
- Sight distance concerns must be maintained for clear sight visibility from thirty (30) inches to seventy-two inches, tree trunks excluded. Measurement shall be made from top of root ball planted at proper elevation.
- Guying/staking practices shall not permit nails, screws, wires, etc., to penetrate outer surfaces of trees, palms or other plant material. Trees, palms and plant material rejected due to this practice shall be replaced with the inspector on site.
- Burlap material, wire cages, plastic/canvas straps, etc., must be cut and removed for the top one-half (1/2) depth of the root ball. Trees and shrubs grown in grow bags or grow bag type material must have such material REMOVED ENTIRELY prior to planting the tree or shrub.
- All plant material shall be free of pests, insects, disease, weeds, etc.
- All required landscape material shall be installed using a planting soil mix comprised of a type appropriate to the individual proposed plant material and the native soil found on the site.
- All plant material shall be planted at the proper depth, as originally grown and/or so the top of the root ball is flush or slightly above finished grade immediately after planting. All trees should provide trunk taper when properly planted at the correct planting depth.
- All plant material shall be watered in at time of planting to eliminate air pockets in the root zone area.
- Upon completion of work, the site shall be cleared of all debris, superfluous materials, and equipment caused by this permit to the satisfaction of the inspector.
Refer to Coconut Creek Fire Equipment Clear Zone diagram to maintain a safe zone fronting fire hydrants.
Do not plant trees, shrubs or groundcover within Electric Meter Clear Zone. Provide a safe zone as described by the Electrical Inspector.
All landscaped areas shall be provided with an underground fully automatic irrigation system using pop-up sprinklers. System shall provide 100% coverage with 50% overlap (minimum) using rust free water, except preserved areas remaining in natural state. A rain sensor device or switch shall be installed that will override the irrigation system when adequate rainfall has occurred. Water shall not be directed and/or provided onto impervious surfaces and/or be designed or installed to throw water over an impervious surface such as a sidewalk, etc. Hours of operation for all irrigation systems shall be limited to 5:00 p.m. to 8:00 a.m. only or as may be further restricted by South Florida Water Management District or other jurisdictional agency.
- Irrigation permits and plans shall be submitted for approval at time of building permits.
- All non-single family or duplex irrigation systems other than City water systems shall require a South Florida Water Management District water use permit prior to issuance of an irrigation permit and installation of the irrigation system as required.
- All site amenities to include site street lights, landscape common open space, irrigation common open space, buffers, berms, landscape entry features, etc. leading up to and including the model center and/or first certificate of occupancy must be completed and functional prior to issuance of the first requested certificate of occupancy.
- The height of all required, designed and installed berms shall be from the highest adjacent point whether it is the sidewalk, parking area, vehicular use area, surrounding ground, etc. Where a berm abuts a sidewalk, there shall be a one (1) foot level sod area adjacent to the sidewalk prior to the start of incline for the berm.
- An inspection is required prior to the backfilling of trees/palms in all parking medians and islands.

NOTES

- SOD TO BE ST. AUGUSTINE 'FLORATAM', CONTRACTOR TO DETERMINE QUANTITY.
- ALL PLANTS TO BE FLORIDA NO. 1 OR BETTER PER FLORIDA GRADES AND STANDARDS FOR NURSERY PLANTS.
- ALL SOD AND LANDSCAPE TO RECEIVE 100% COVERAGE WITH 100% OVERLAP FROM AN AUTOMATIC IRRIGATION SYSTEM USING AN APPROVED WATER SOURCE.
- BUBBLERS TO BE PROVIDED FOR NEW AND RELOCATED TREES AND PALMS.
- CONTRACTOR IS RESPONSIBLE FOR ALL CONDITIONS AND LANDSCAPE SPECIFICATION ATTACHED TO THIS PLAN AND PLANT LIST. PLAN AND SPECIFICATIONS SHALL BE CONSIDERED CONTRACT DOCUMENTS.
- PRE-CONSTRUCTION MEETING IS REQUIRED BEFORE ANY PLANT MATERIAL IS INSTALLED ON SITE.
- ALL ROAD ROCK, CONCRETE, ASPHALT AND OTHER NON-NATURAL MATERIAL BE REMOVED AND BE REPLACED WITH PLANTING SOIL PRIOR TO LANDSCAPE INSTALLATION.
- NO TRENCHING ALLOWED WITHIN ROOT ZONES OF EXISTING TREES.

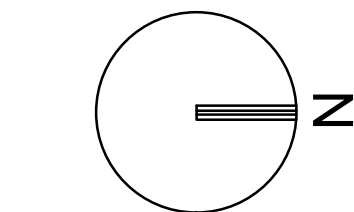
PLANT LIST

SHRUBS & GROUNDCOVERS			
QTY	** N	KEY	PLANT NAME
375	**	ARA	<i>Arachis glabrata</i> PERENNIAL PEANUT
178	**	CLU	<i>Clusia guttifera</i> SMALL LEAF CLUSIA
90	**N	CHH	<i>Chrysobalanus icaco</i> 'Horizontal' HORIZONTAL COCOPLUM
285	**N	CHR	<i>Chrysobalanus icaco</i> COCOPLUM
74	**N	CRN	<i>Clusia rosea</i> 'Nana' DWARF CLUSIA
648	**N	ERN	<i>Erodia littoralis</i> GOLDEN CREEPER
35	*	GAL	<i>Galphimia gracilis</i> THYRSALLIS
11	**N	HAM	<i>Hamelia patens</i> FIREBUSH
219	**	HPD	<i>Hamelia nodosa</i> DWARF FIREBUSH
95	**	JUN	<i>Juniperus conferta</i> 'Parsonii' PARSON'S JUNIPER
105	**	LAM	<i>Lantana montividentis</i> Trailing Lantana
213	**N	MUH	<i>Muhlenbergia capillaris</i> GULF MUHLY GRASS
305	**N	NEP	<i>Nephrolepis exaltata</i> SWORD FERN
7	*	PAS	<i>Passiflora incarnata</i> PURPLE PASSION VINE
315	*N	PSY	<i>Psychotria nervosa</i> WILD COFFEE
50	*	RON	<i>Rondeletia splendens</i> PANAMA ROSE
35	**N	SER	<i>Serenoa repens</i> SAW PALMETTO
75	**N	STJ	<i>Stachytarpheta jamaicensis</i> NATIVE PORTERWEED
28	*	TFP	<i>Tabernaemontana</i> 'Flore Pleno' CRAPE JASMINE
265	**N	TRD	<i>Trachelosperrum floridanum</i> DWF FAKAHATCHEE GRASS
1800	**N	WET	<i>Sagittaria</i> , <i>Pontederia</i> , <i>Juncus</i> WETLAND MIX
175	**N	ZAM	<i>Zamia pumila</i> (<i>Zamia floridana</i>) COONTIE
		SOD	ST. AUGUSTINE 'FLORATAM'

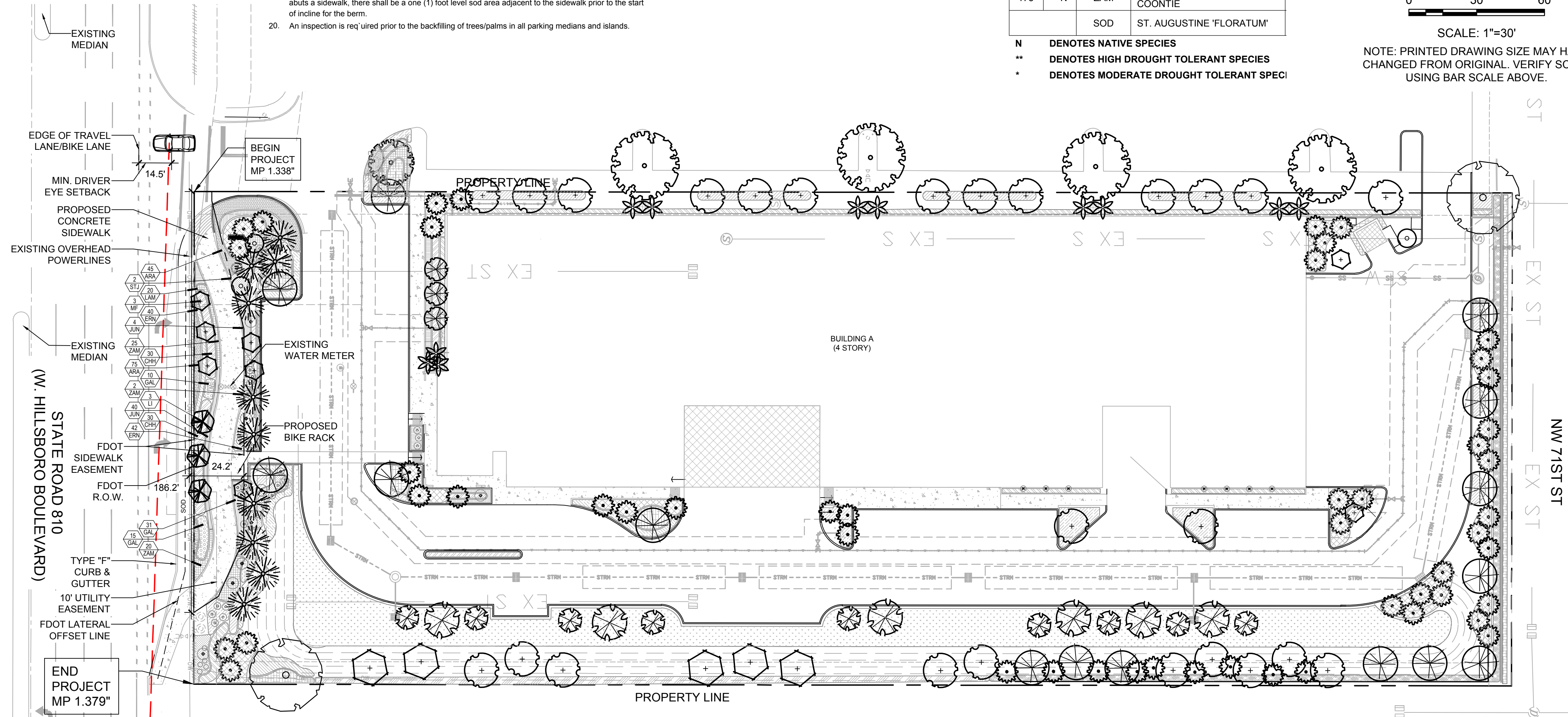
- N DENOTES NATIVE SPECIES
- ** DENOTES HIGH DROUGHT TOLERANT SPECIES
- * DENOTES MODERATE DROUGHT TOLERANT SPECIES

PLANT LIST

TREES			
QTY	** N	KEY	PLANT NAME
5	*N	AR	<i>Acer rubrum</i> RED MAPLE
12	**N	CE	<i>Conocarpus erectus</i> GREEN BUTTWOOD
13	**N	BS	<i>Bursera Simaruba</i> GUMBO LIMBO
3	*N	IC	<i>Ilex cassine</i> DAHOON HOLLY
3	**	ED	<i>Elaeocarpus decipiens</i> JAPANESE BLUEBERRY
3	**	LI	<i>Lagerstroemia indica</i> CRAPE MYRTLE
8	**N	MF	<i>Myrcianthes fragrans</i> SIMPSON STOPPER
10	**N	PI	<i>Pinus elliotii</i> SLASH PINE
12	**N	QV	<i>Quercus virginiana</i> LIVE OAK
3	*N	QV"	<i>Quercus virginiana</i> LIVE OAK
6	**N	TD	<i>Taxodium distichum</i> BALD CYPRESS
9	**N	TD2	<i>Taxodium distichum</i> BALD CYPRESS
-	**	TH	<i>Tabebuia heterophylla</i> PINK TRUMPET
8	**	PE	<i>Ptychosperma elegans</i> SOLITAIRE PALM
1	**	PE3	<i>Ptychosperma elegans</i> SOLITAIRE PALM
51	**N	SP	<i>Sabal palmetto</i> CABBAGE PALM / SABAL PALM



GRAPHIC SCALE
0 30 60
SCALE: 1"=30'
NOTE: PRINTED DRAWING SIZE MAY HAVE CHANGED FROM ORIGINAL. VERIFY SCALE USING BAR SCALE ABOVE.



Sunshine811
Call 811 or www.sunshine811.com two full business days before digging to have utilities located and marked.
Check positive response codes before you dig!

KEITH
Corporate Office
301 East Atlantic Boulevard
Pompano Beach, Florida 33060-6643
(954) 788-3400

Miami-Dade County
2160 NW 82 Avenue
Doral, Florida 33122

Palm Beach County
120 N Federal Highway, Suite 208
Lake Worth, Florida 33460

Orange County
2948 E Livingston Street
Orlando, Florida 32803

State of Florida Certificate of Authorization Number - 7928

BID / CONTRACT NO. :

REVISIONS		
NO.	DESCRIPTION	DATE

PRELIMINARY PLAN NOT FOR CONSTRUCTION
THESE PLANS ARE NOT FULLY PERMITTED AND ARE SUBJECT TO REVISIONS MADE DURING THE PERMITTING PROCESS. RESPONSIBILITY FOR THE USE OF THESE PLANS PRIOR TO OBTAINING PERMITS FROM ALL AGENCIES HAVING JURISDICTION OVER THE PROJECT WILL FALL SOLELY UPON THE USER.

LEDER 4161 HILLSBORO STORAGE

SCALE:	AS NOTED
DATE ISSUED:	07/06/2023
DRAWN BY:	KG
DESIGNED BY:	MP
CHECKED BY:	MP, KS

This item has been digitally signed and sealed by Michael J. Phillips, on the date below using a Digital Signature.

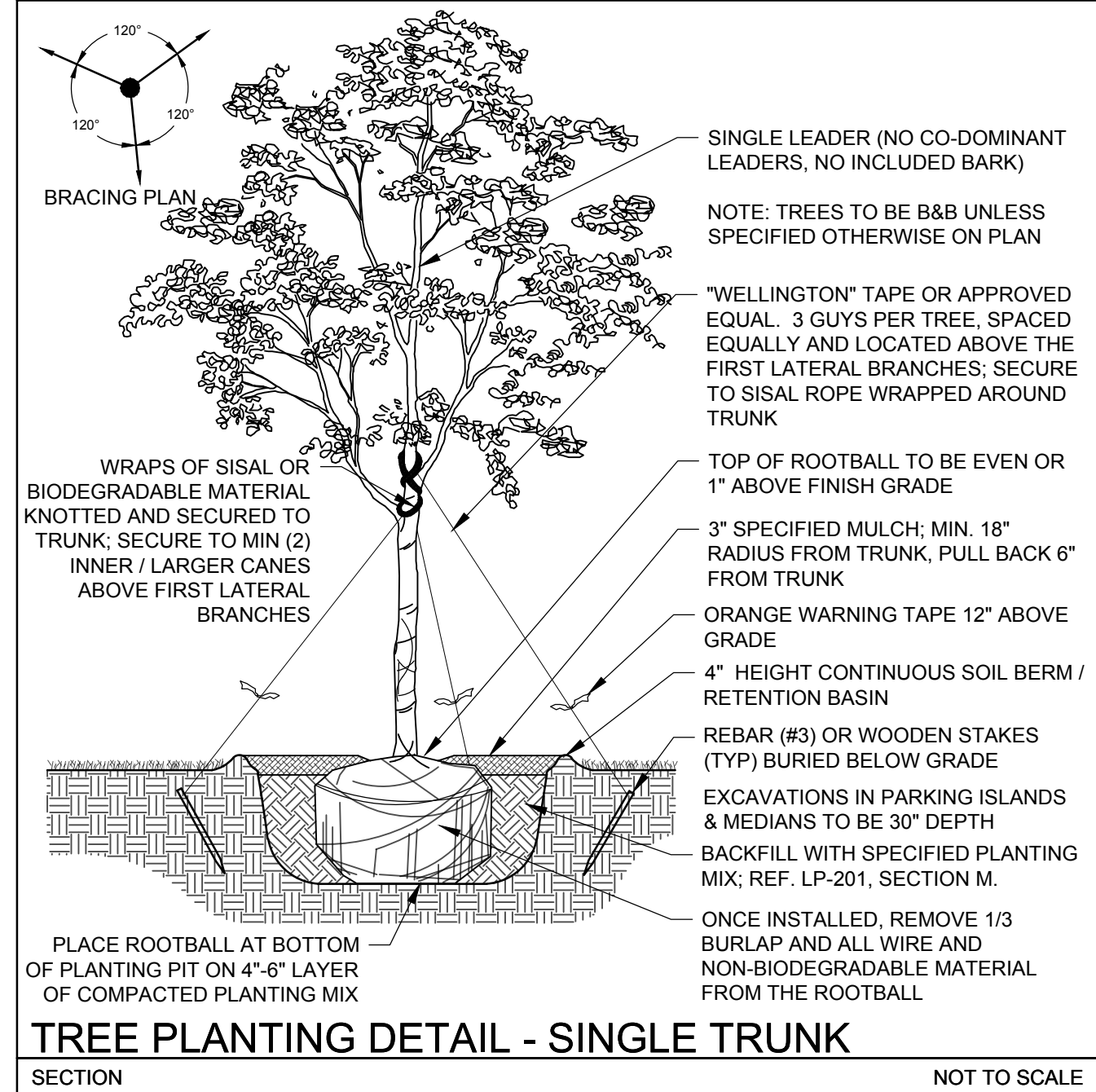
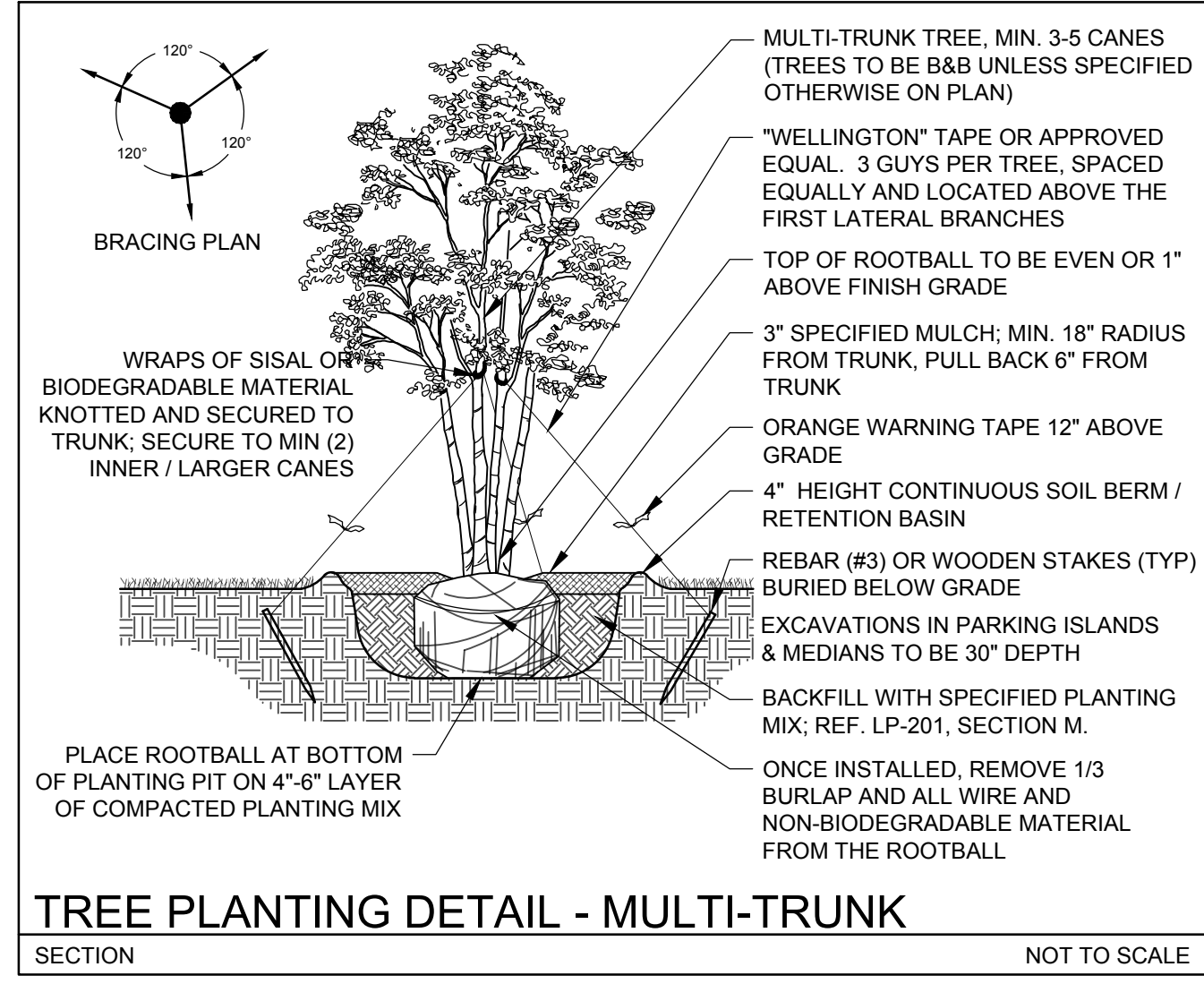
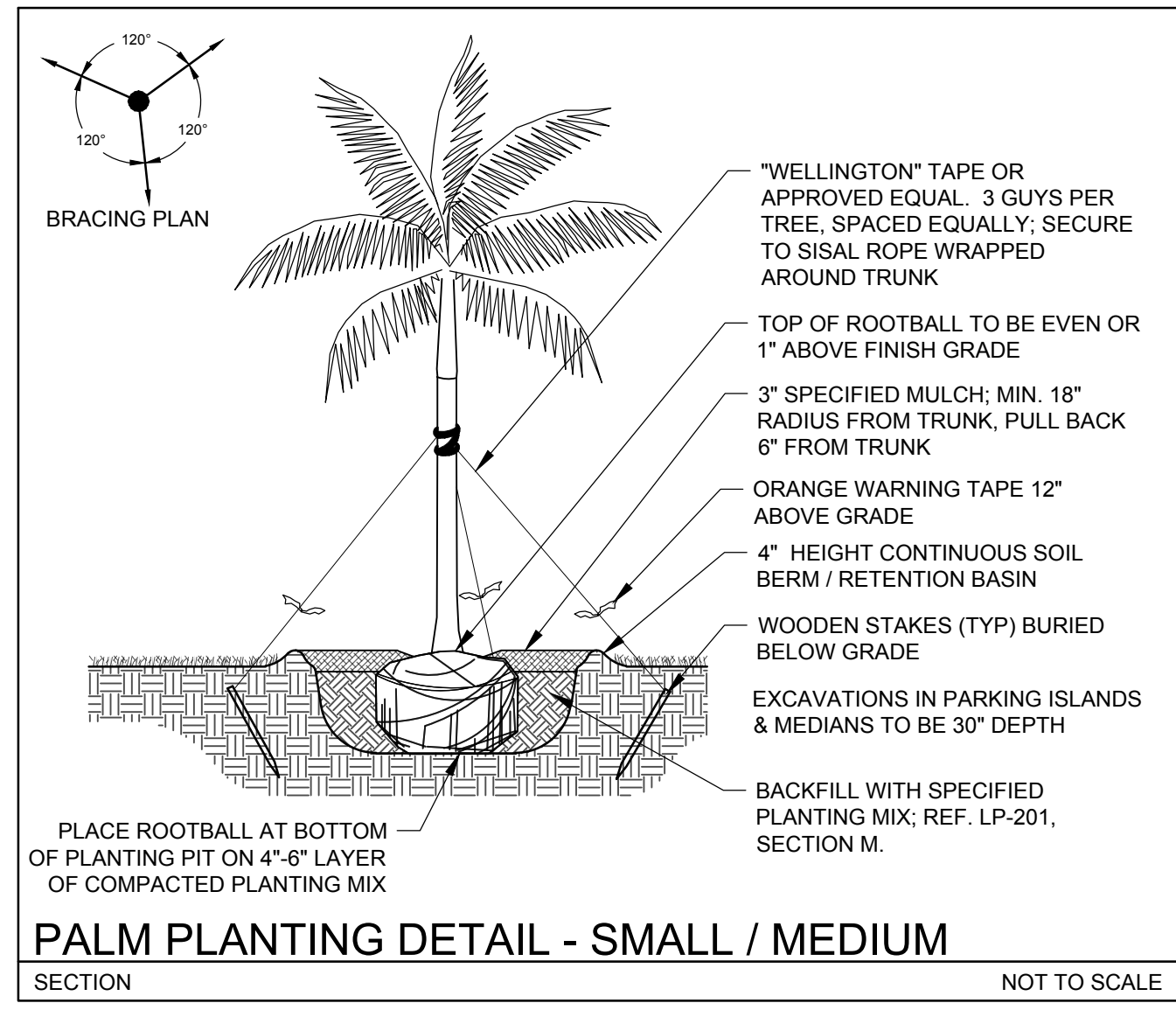
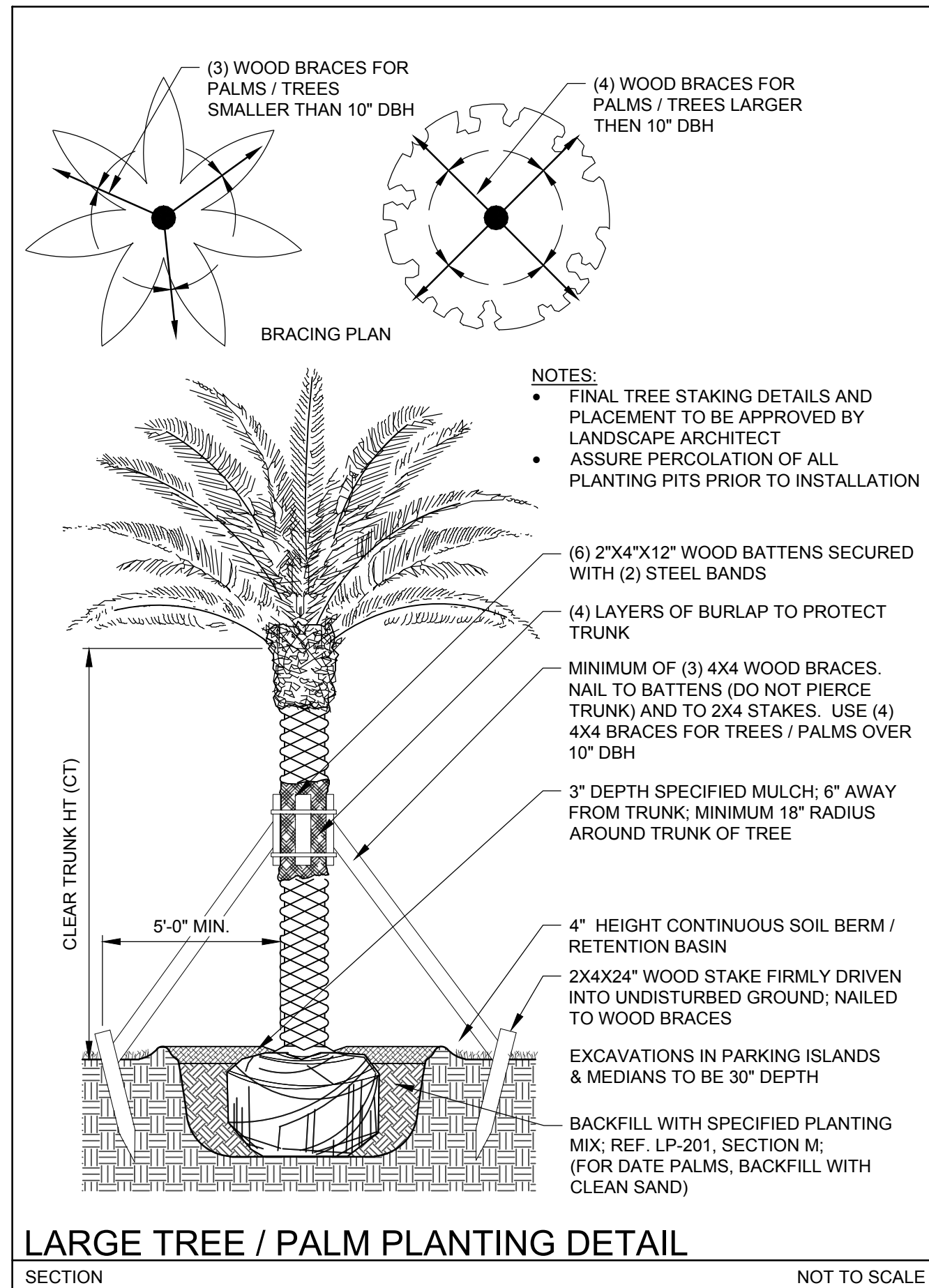
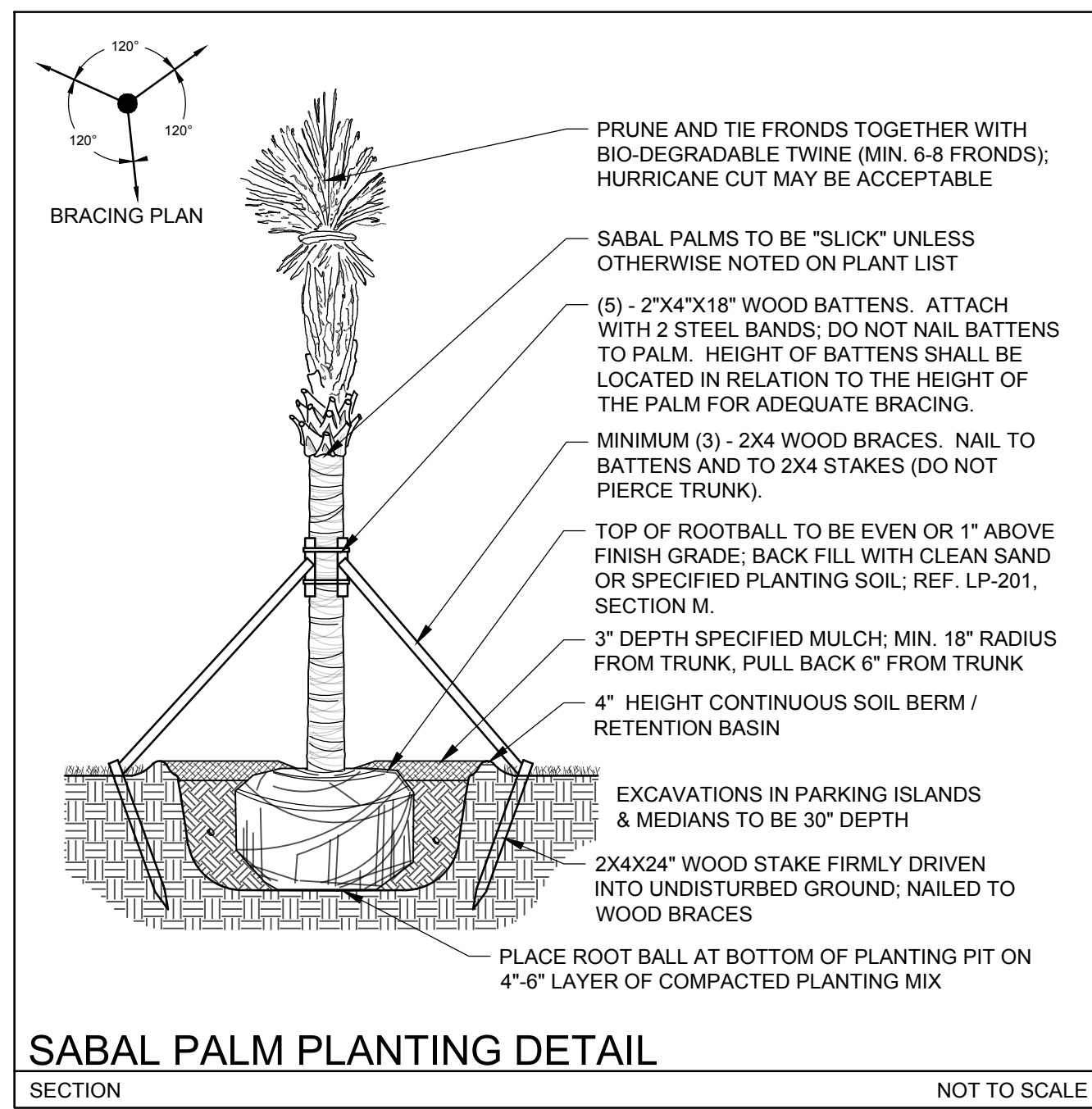
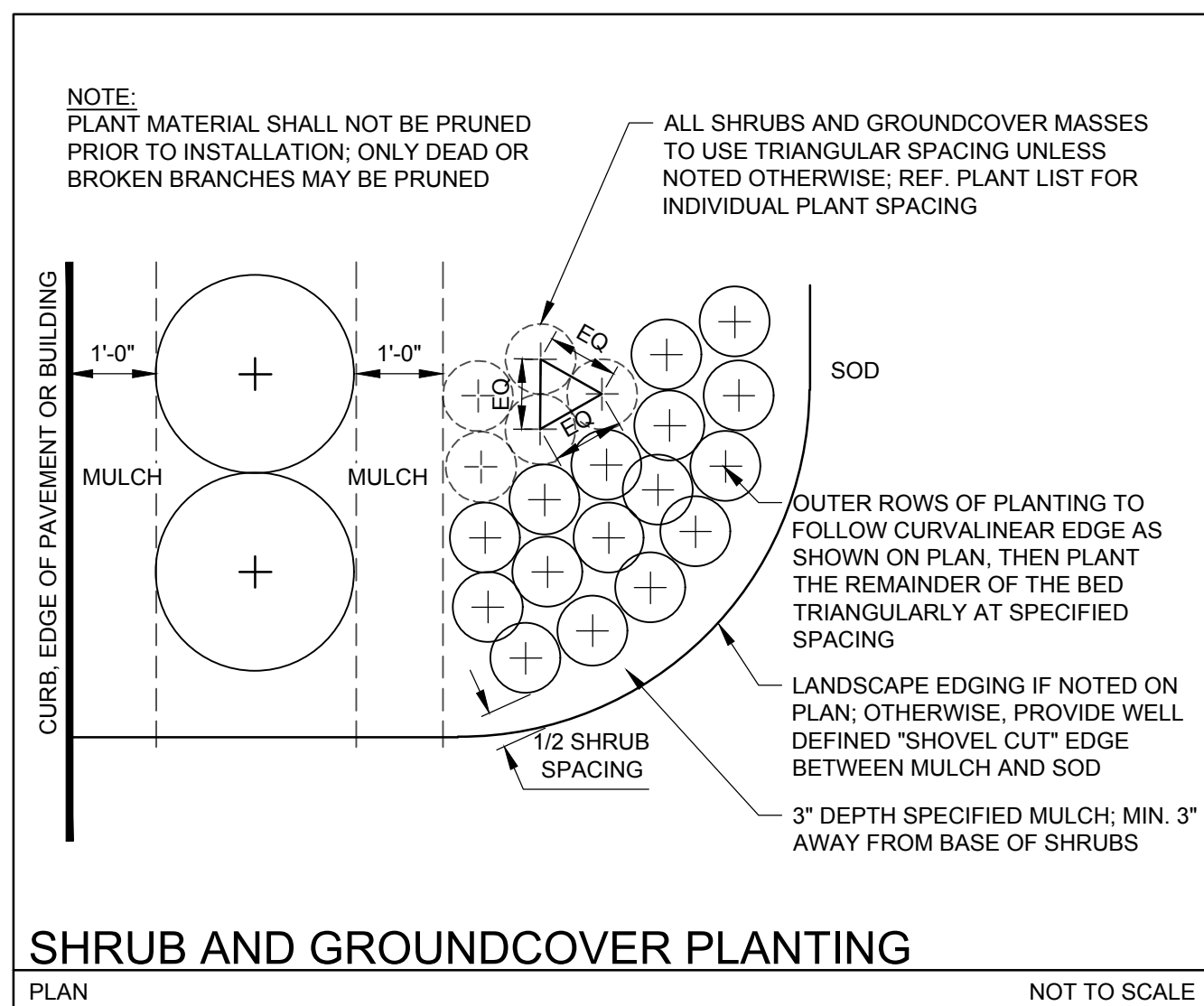
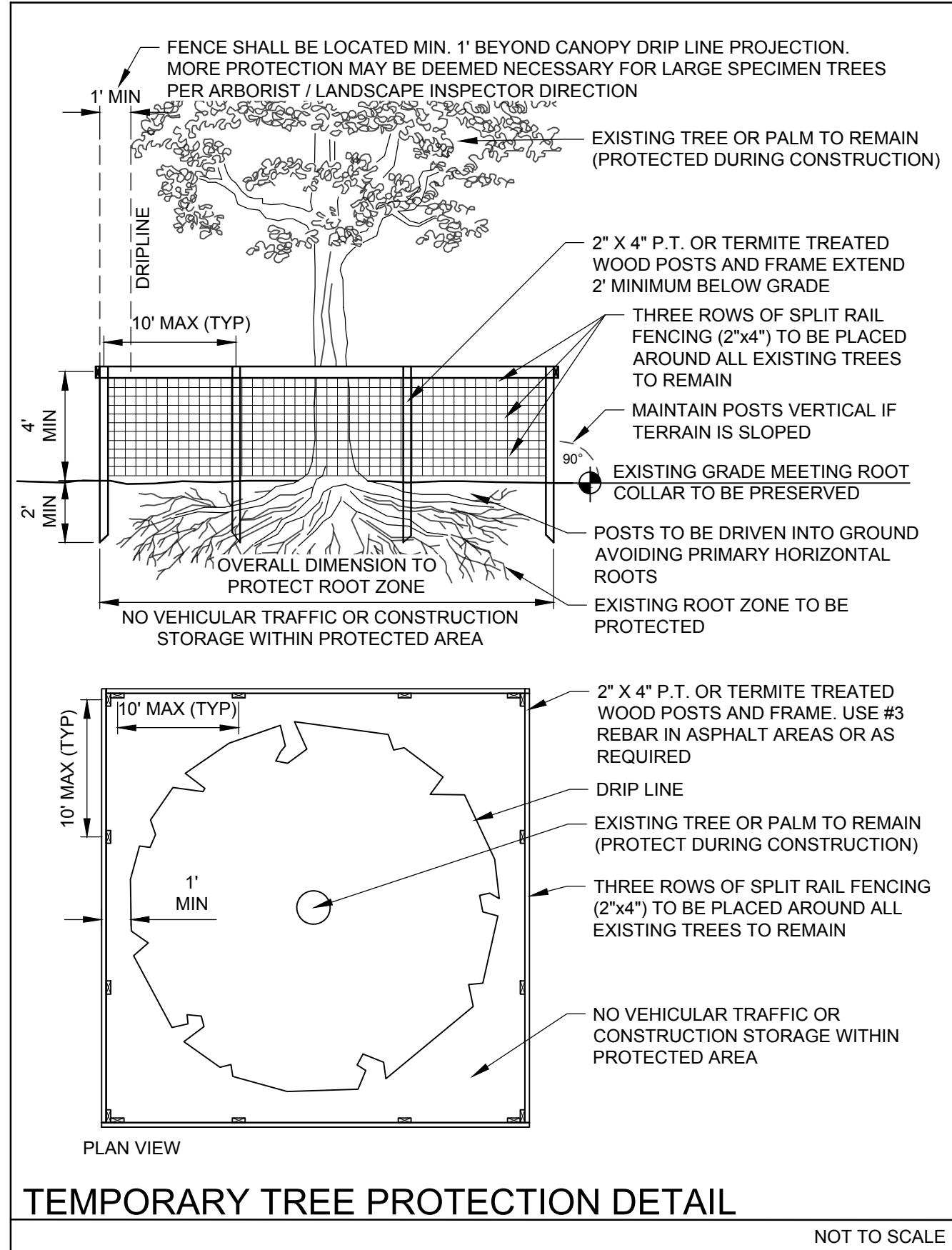
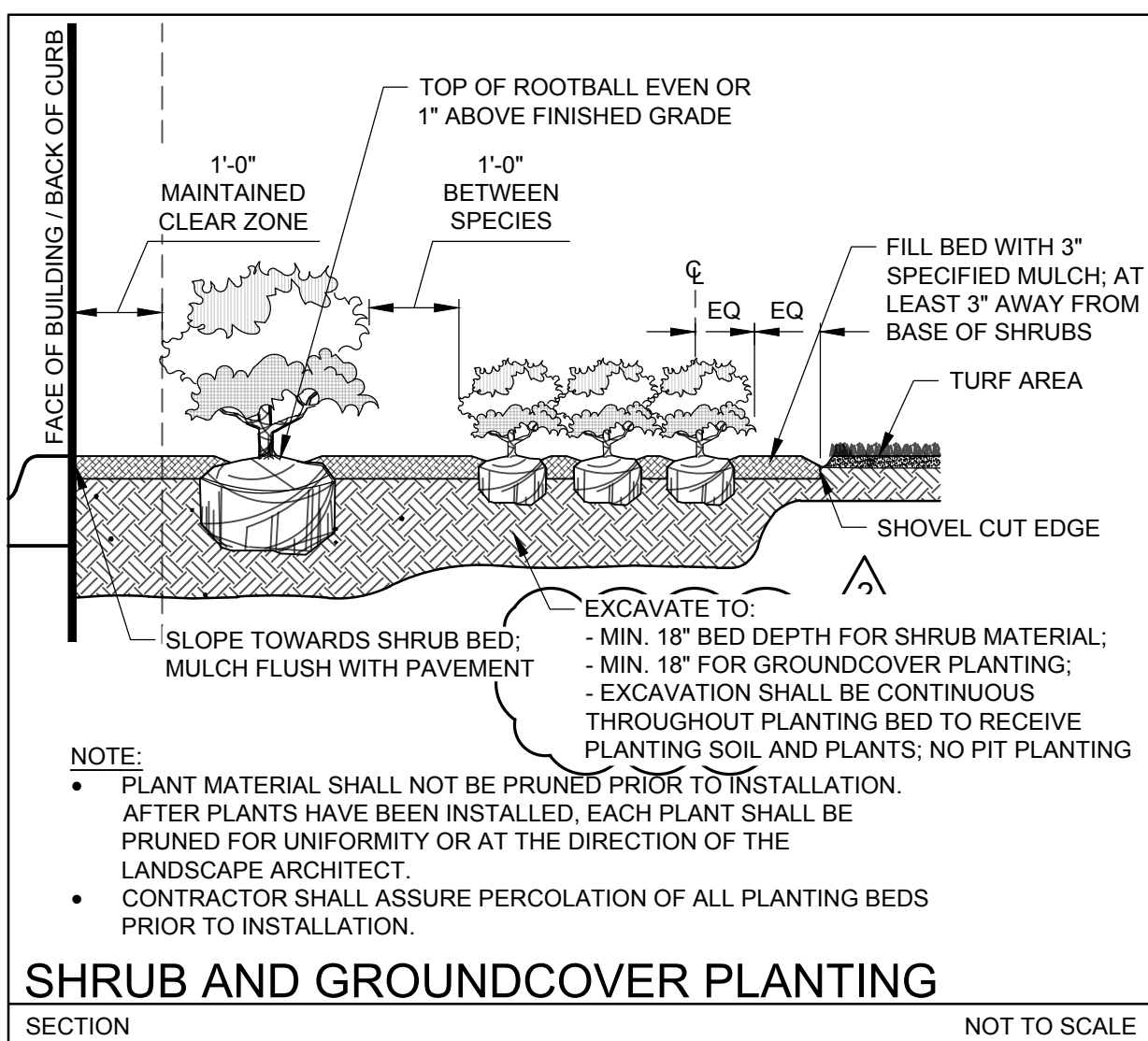
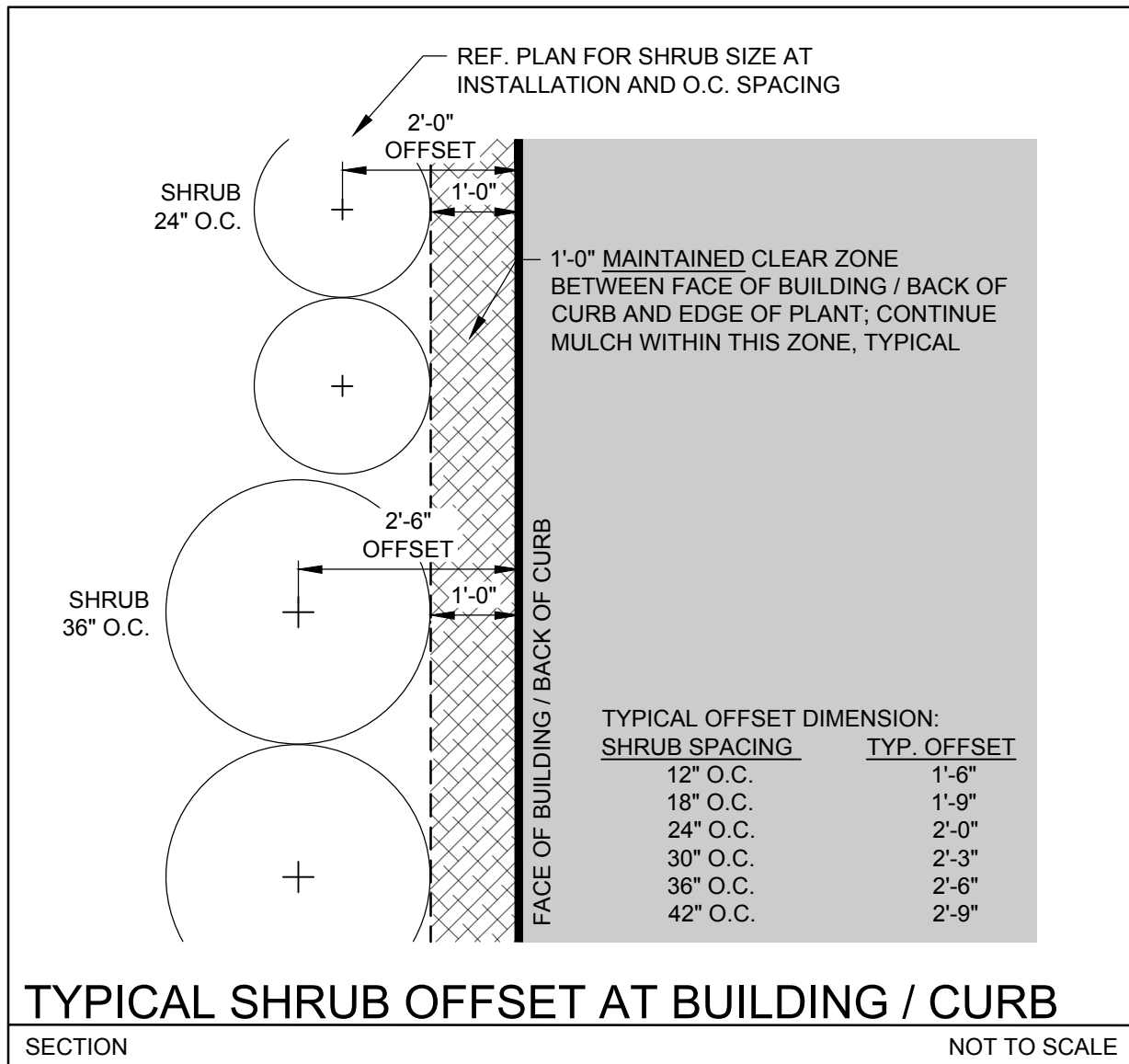
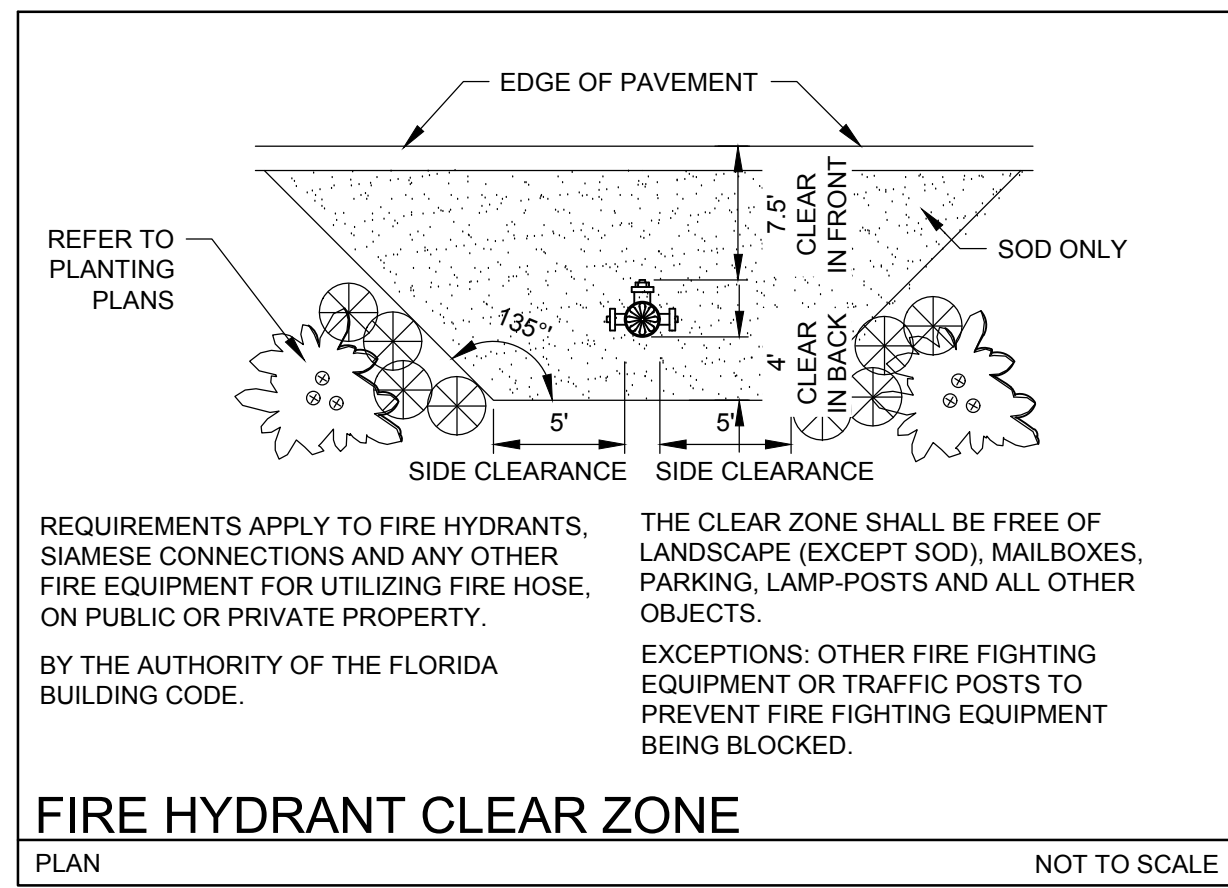
Printed copies of this document are not considered signed and sealed and the signature must be verified on any electronic copies.

MICHAEL J. PHILLIPS, R.L.A.
FLORIDA REG. NO. LA0001540
(FOR THE FIRM)

SHEET TITLE
LANDSCAPE PLAN

SHEET NUMBER
LP-101

PROJECT NO. **09675.01**



KEITH
Corporate Office
301 East Atlantic Boulevard
Pompano Beach, Florida 33060-6643
(954) 788-3400

Miami-Dade County
2160 NW 82 Avenue
Doral, Florida 33122

Palm Beach County
120 N Federal Highway, Suite 208
Lake Worth, Florida 33460

Orange County
2948 E Livingston Street
Orlando, Florida 32803

State of Florida Certificate of Authorization Number - 7928

BID / CONTRACT NO.:

REVISIONS		
NO.	DESCRIPTION	DATE

PRELIMINARY PLAN NOT FOR CONSTRUCTION
THESE PLANS ARE NOT FULLY PERMITTED AND ARE SUBJECT TO REVISIONS MADE DURING THE PERMITTING PROCESS. RESPONSIBILITY FOR THE USE OF THESE PLANS PRIOR TO OBTAINING PERMITS FROM ALL AGENCIES HAVING JURISDICTION OVER THE PROJECT WILL FALL SOLELY UPON THE USER.

LEDER 4161 HILLSBORO STORAGE

SCALE: AS NOTED
DATE ISSUED: 07/06/2023
DRAWN BY: KG
DESIGNED BY: MP
CHECKED BY: MP, KS

This item has been digitally signed and sealed by Michael J. Phillips, on the date below using a Digital Signature.

Printed copies of this document are not considered signed and sealed and the signature must be verified on any electronic copies.

MICHAEL J. PHILLIPS, R.L.A.
FLORIDA REG. NO. LA0001540
(FOR THE FIRM)

SHEET TITLE

LANDSCAPE DETAILS

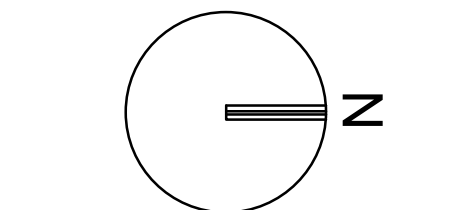
SHEET NUMBER
LP-501

PROJECT NO. **09675.01**

- FDOT IRRIGATION NOTES:**
1. THE IRRIGATION SYSTEM SHALL USE THE LOWEST QUALITY WATER AVAILABLE WHICH ADEQUATELY AND SAFELY MEETS THE WATER NEEDS OF THE SYSTEM. STORM WATER, RECLAIM WATER, OR GREY WATER IRRIGATION SHALL BE USED WHENEVER POSSIBLE.
 2. FDOT REQUIRES 24-HOUR EMERGENCY ACCESS TO WATER SOURCE.
 3. CONTRACTOR SHALL PROVIDE FDOT DISTRICT OPERATIONS MANAGER WITH A SET OF "AS-BUILT" IRRIGATION PLANS.

IRRIGATION LEGEND

SYMBOL	DESCRIPTION
	HUNTER PGP 6" POP-UP ROTOR HEADS
	HUNTER 140 POP-UP ROTOR HEADS
	HUNTER SPRAY NOZZLES: 15' RADIUS, WITH PRO SPRAY BODY
	HUNTER SPRAY NOZZLES: 12' RADIUS, WITH PRO SPRAY BODY
	HUNTER SPRAY NOZZLES: 10' RADIUS, WITH PRO SPRAY BODY
	HUNTER SPRAY NOZZLES: 8' RADIUS, WITH PRO SPRAY BODY
	HUNTER SIDE SPRAY: SS530, WITH PRO SPRAY BODY
	HUNTER END SPRAY: ES515, WITH PRO SPRAY BODY
	HUNTER MULTI-STREAM BUBBLERS: MSBN SERIES
	HUNTER BUBBLERS: PCN SERIES
	ZONE VALVE: ELECTRONIC, EQUAL TO IRRITROL, SIZE PER PLAN, IN AMETEK OR CARSON 12"X18" VALVE BOX
	AMES BRASS GATE VALVE, SAME SIZE AS MAINLINE, IN 6" SCH 40 PVC COLLAR EXTENSION AND VALVE BOX
	HUNTER MODULAR IRRIGATION CONTROLLER EQUAL TO PRO-C SERIES WITH SOLAR SYNC, TO BE LOCATED PER OWNER'S PREFERENCE
	SLEEVES: SCH 40 PVC OR RATED EQUAL CLASS SLEEVES TO BE MIN. 24" AND MAX. 36" DEEP
	MAIN LINE: SCH 40 PVC WITH SCH 80 PVS FITTINGS THRUST BLOCKS AT STRESS POINTS, SITE PER PLAN
	LATERAL PIPING: PVC CLASS 200 PVC FITTINGS AND GLUE JOINTS, PER SPECIFICATIONS



GRAPHIC SCALE
 0 30 60
 SCALE: 1"=30'
 NOTE: PRINTED DRAWING SIZE MAY HAVE CHANGED FROM ORIGINAL. VERIFY SCALE USING BAR SCALE ABOVE.

- NOTES:**
1. ALL SOD AND LANDSCAPE TO RECEIVE 100% COVERAGE WITH 100% OVERLAP FROM AN AUTOMATIC IRRIGATION SYSTEM USING AN APPROVED WATER SOURCE.
 2. A RAIN SENSOR MUST BE INSTALLED TO OVER-RIDE THE CONTROLLER.
 3. BUBBLERS TO BE PROVIDED FOR NEW AND RELOCATED TREES AND PALMS.
 4. CONTRACTOR IS RESPONSIBLE FOR ALL CONDITIONS AND IRRIGATION SPECIFICATION ATTACHED TO THIS PLAN. PLAN AND SPECIFICATIONS SHALL BE CONSIDERED CONTRACT DOCUMENTS.
 5. INVESTIGATE TO DETERMINE AND VERIFY THE LOCATION OF UNDERGROUND UTILITIES BEFORE EXCAVATION.
 6. REFER TO SHEET LI-501 FOR ADDITIONAL IRRIGATION SPECIFICATIONS AND DETAILS.

KEITH
 Corporate Office
 301 East Atlantic Boulevard
 Pompano Beach, Florida 33060-6643
 (954) 788-3400

Miami-Dade County
 2160 NW 82 Avenue
 Doral, Florida 33122

Palm Beach County
 120 N Federal Highway, Suite 208
 Lake Worth, Florida 33460

Orange County
 2948 E Livingston Street
 Orlando, Florida 32803

State of Florida Certificate of Authorization Number - 7928

BID / CONTRACT NO. :

REVISIONS

NO.	DESCRIPTION	DATE

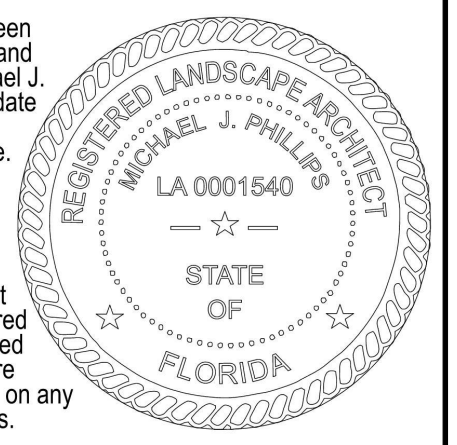
**PRELIMINARY PLAN
 NOT FOR CONSTRUCTION**
 THESE PLANS ARE NOT FULLY PERMITTED AND ARE SUBJECT TO REVISIONS MADE DURING THE PERMITTING PROCESS. RESPONSIBILITY FOR THE USE OF THESE PLANS PRIOR TO OBTAINING PERMITS FROM ALL AGENCIES HAVING JURISDICTION OVER THE PROJECT WILL FALL SOLELY UPON THE USER.

**LEDER
 4161 HILLSBORO
 STORAGE**

SCALE: AS NOTED
 DATE ISSUED: 07/06/2023
 DRAWN BY: KG
 DESIGNED BY: MP
 CHECKED BY: MP, KS

This item has been digitally signed and sealed by Michael J. Phillips, on the date below using a Digital Signature.

Printed copies of this document are not considered signed and sealed and the signature must be verified on any electronic copies.

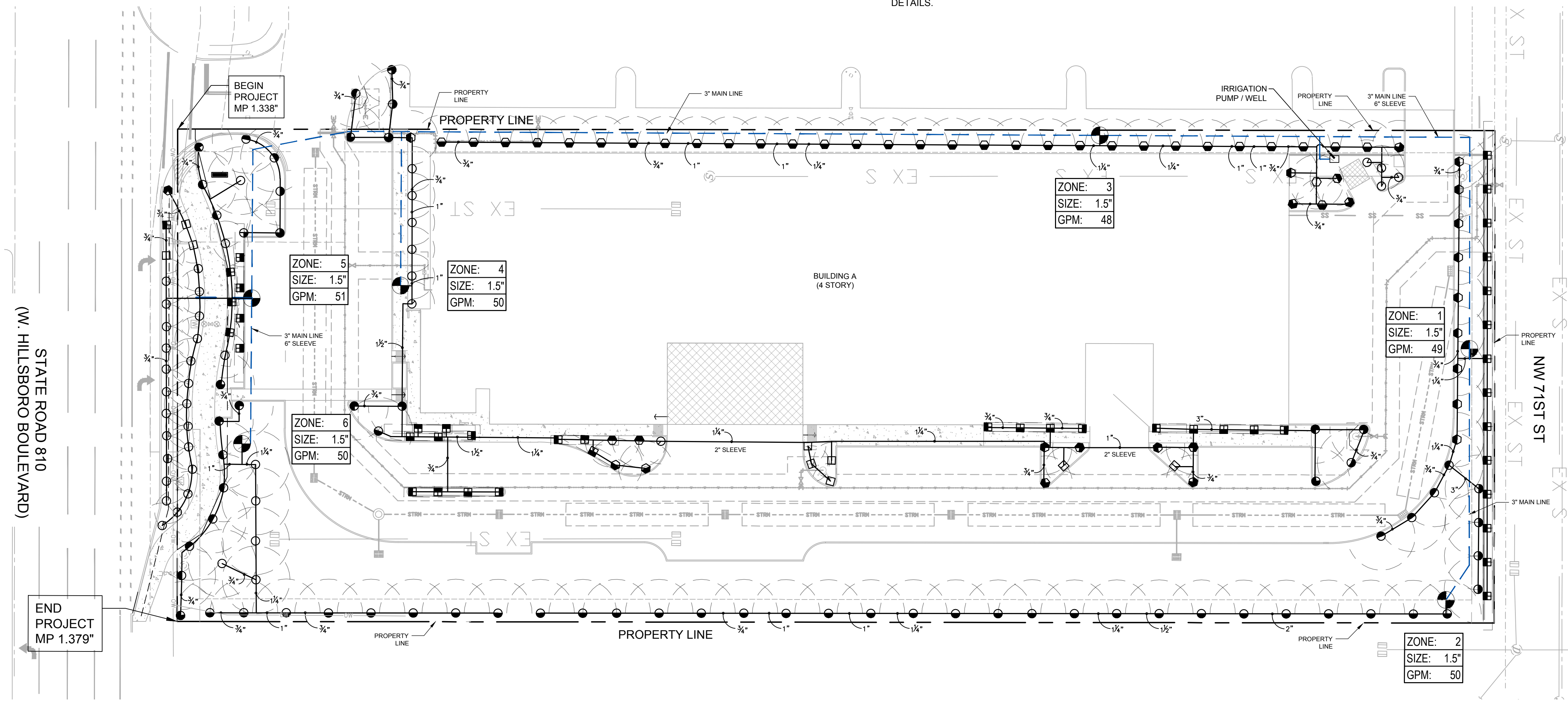


MICHAEL J. PHILLIPS, R.L.A.
 FLORIDA REG. NO. LA0001540
 (FOR THE FIRM)

SHEET TITLE
IRRIGATION PLAN

SHEET NUMBER
LI-101

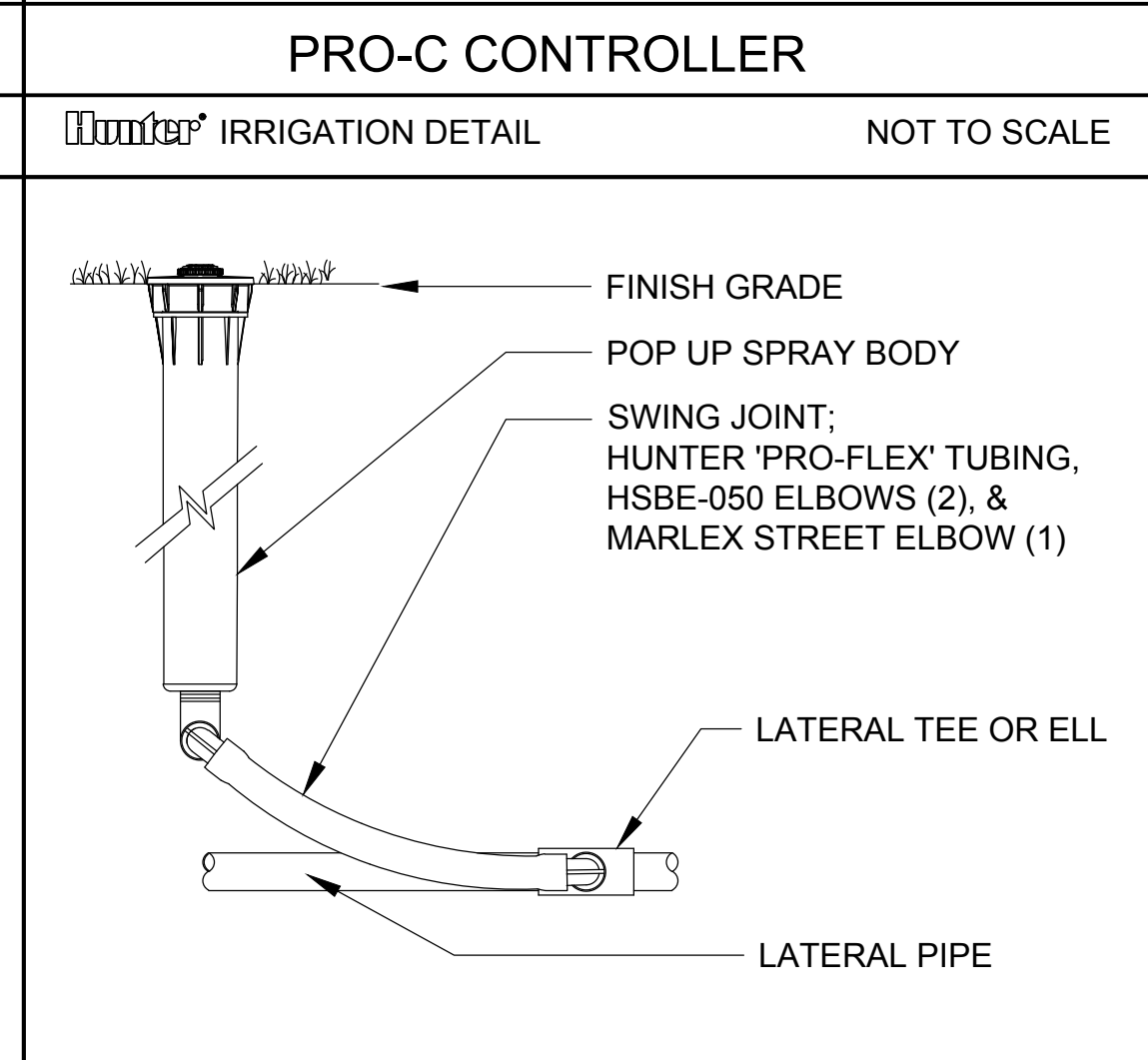
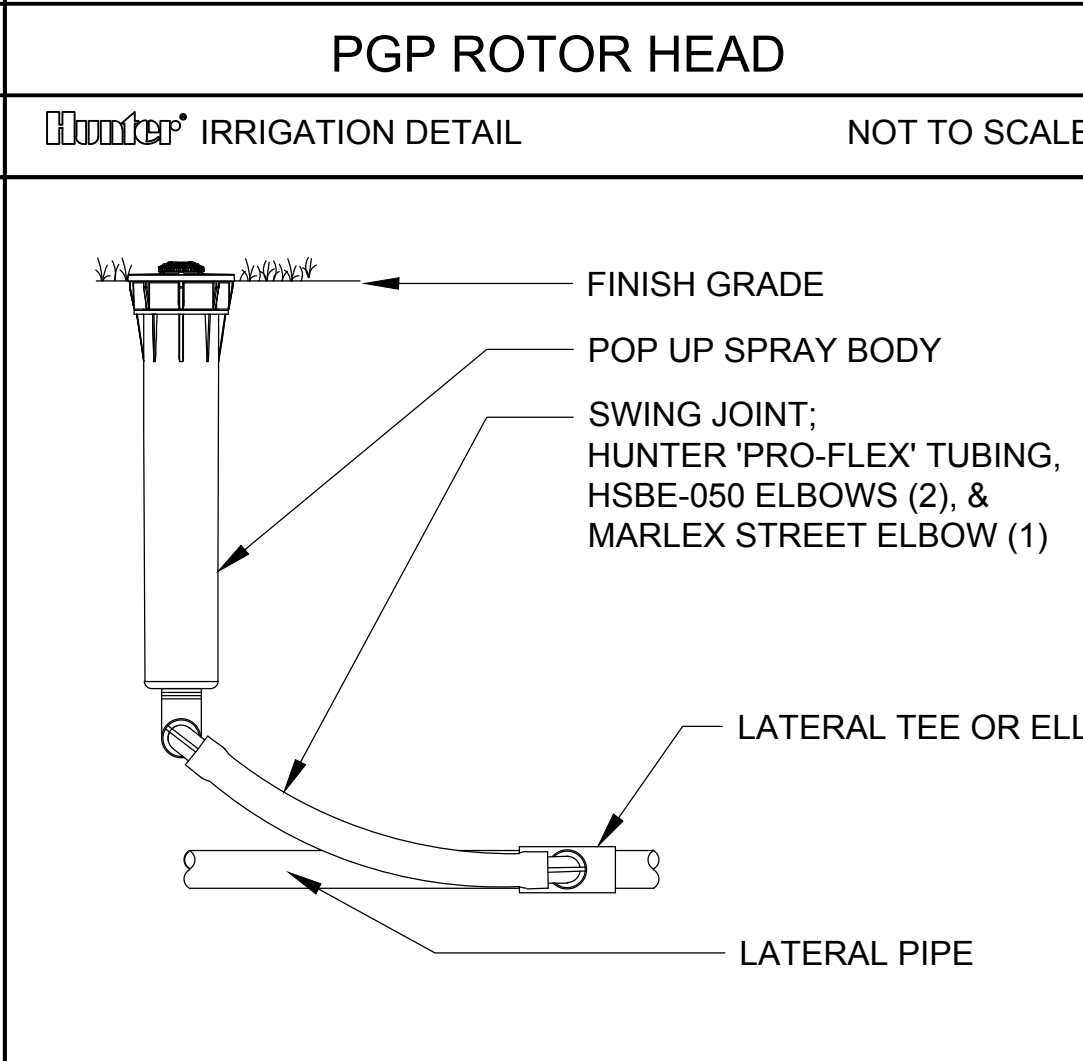
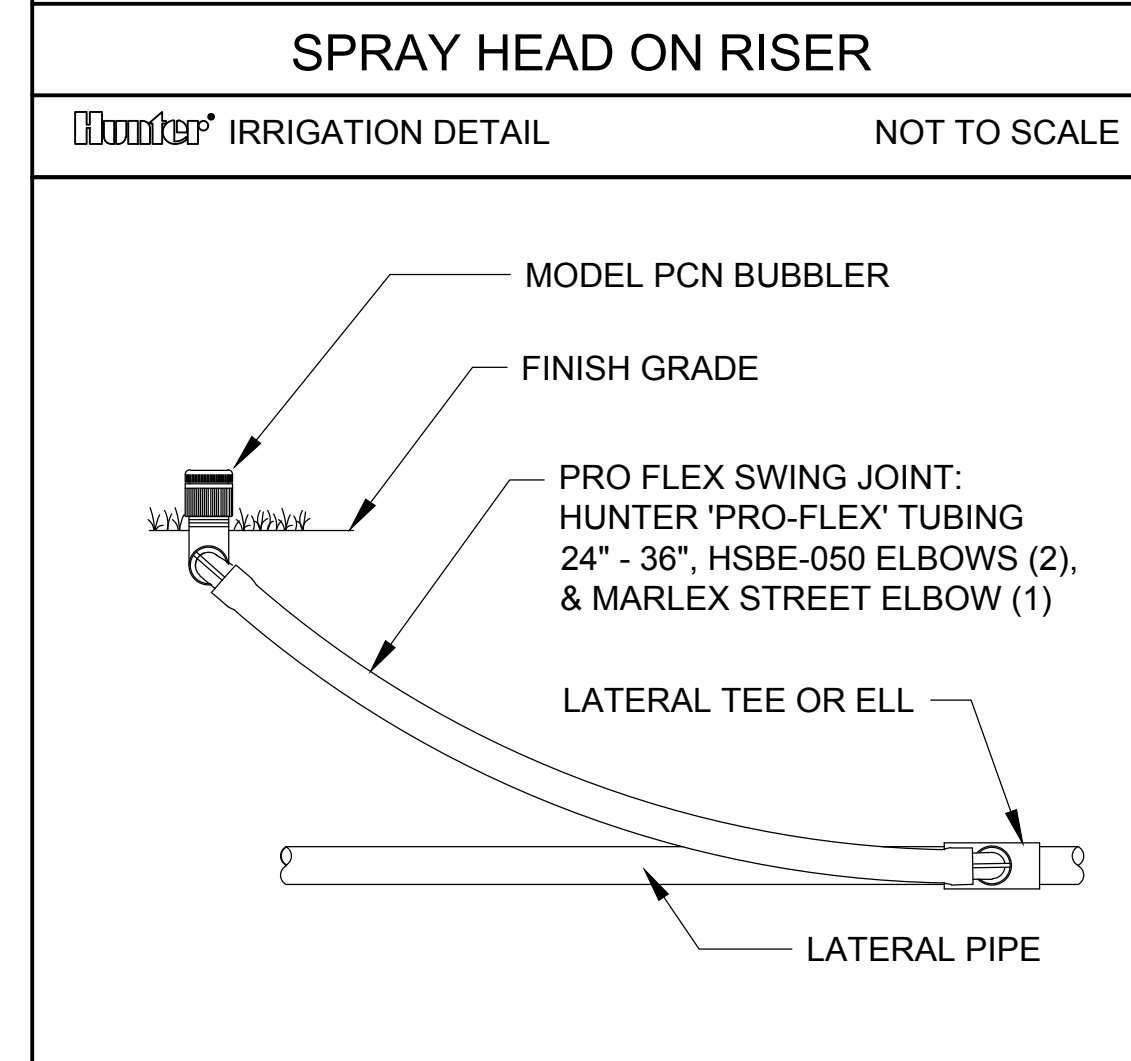
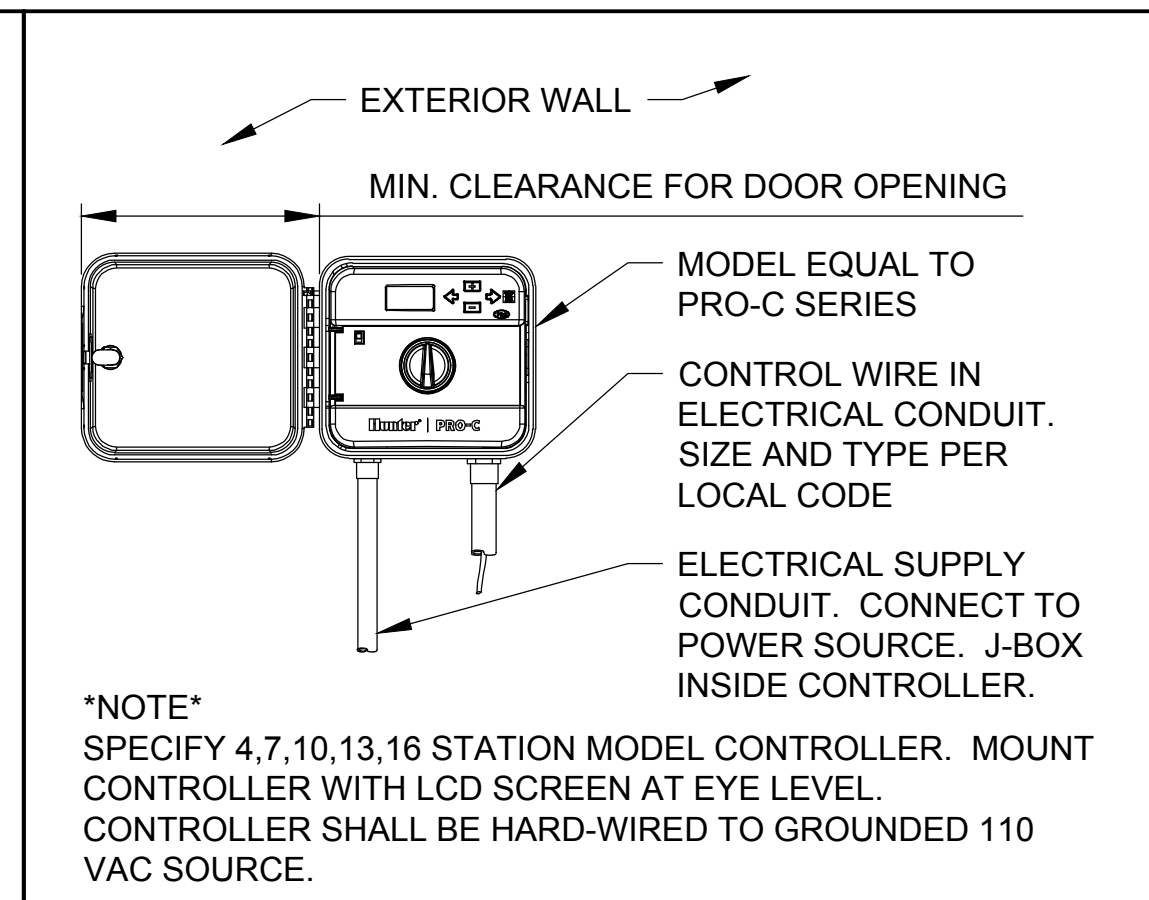
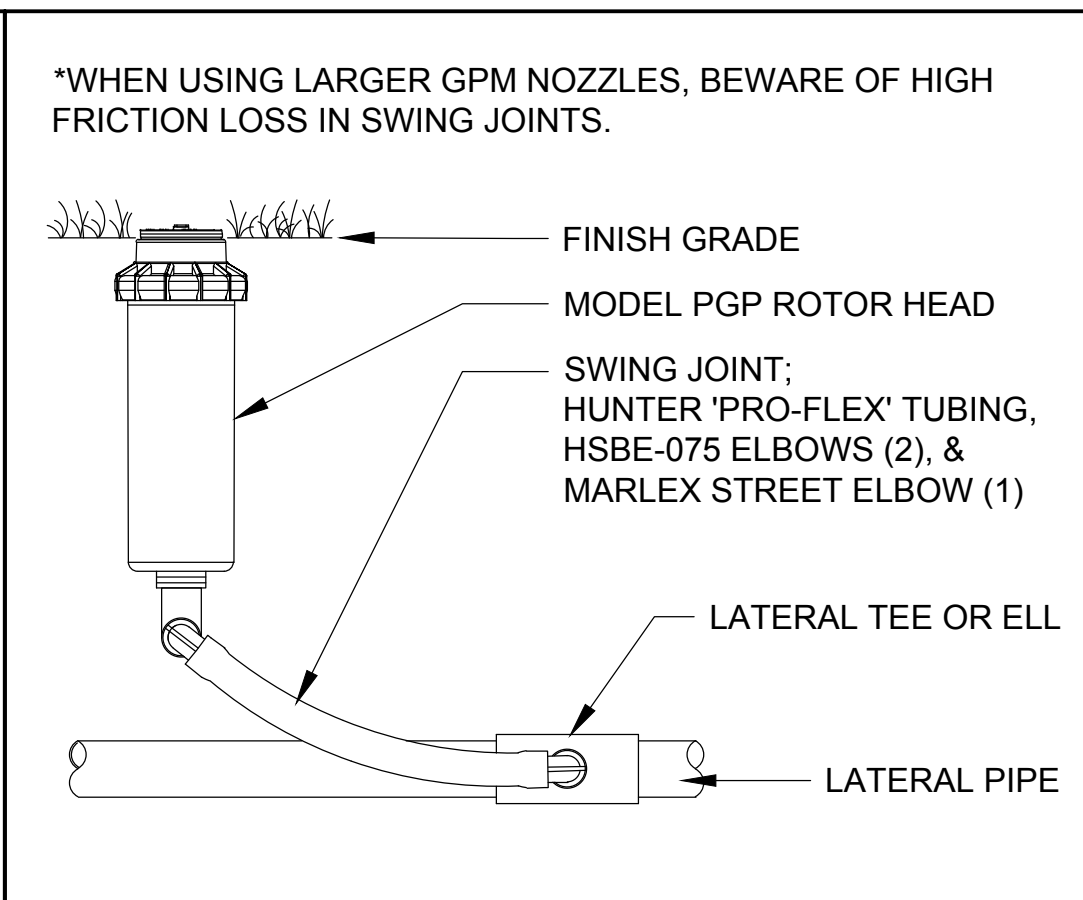
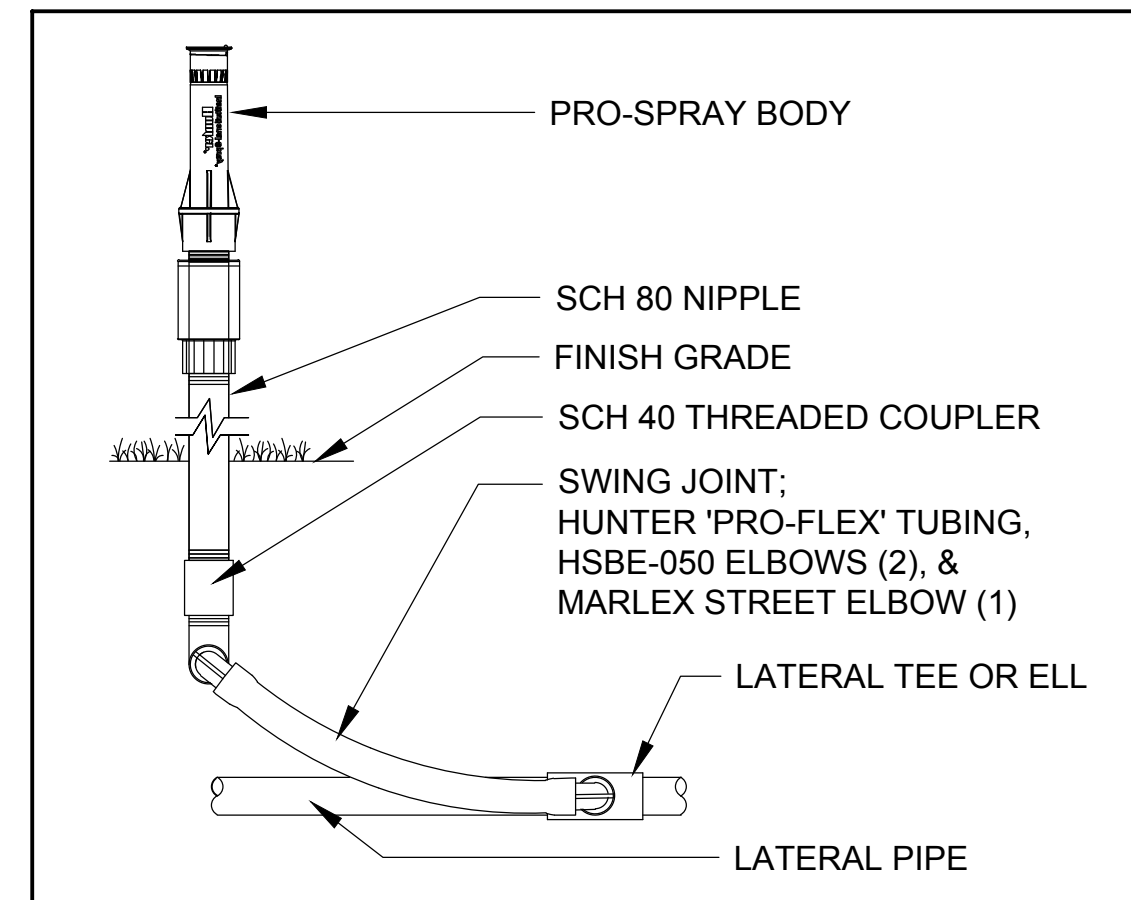
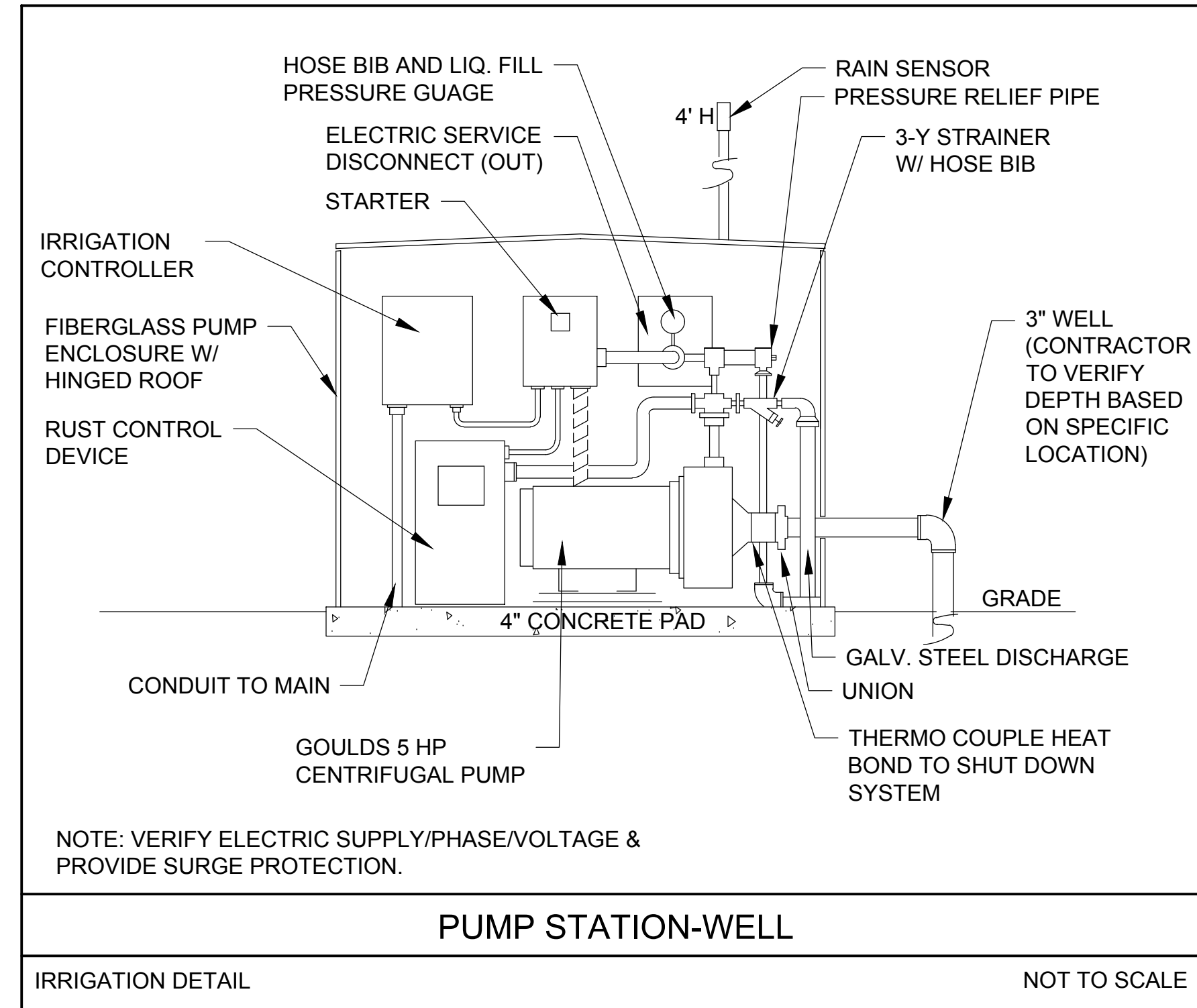
PROJECT NO. **09675.01**



Sunshine811
 Call 811 or www.sunshine811.com two full business days before digging to have utilities located and marked.
 Check positive response codes before you dig!

IRRIGATION NOTES

- THE CONTRACTOR IS RESPONSIBLE FOR ALL MATERIAL REQUIRED TO MAKE THE SYSTEM FUNCTION PROPERLY. ALL IRRIGATION SHALL BE INSTALLED IN ACCORDANCE WITH MANUFACTURER'S SPECIFICATIONS AND ALSO STATE AND/OR LOCAL CODES.
- IRRIGATION PLANS ARE SCHEMATIC AND DRAWN FOR GRAPHIC CLARITY. ALL PIPING BELOW PAVEMENT SHALL BE SLEEVED. LAYOUT OF IRRIGATION SYSTEM SHALL BE COORDINATED WITH CORRESPONDING LANDSCAPE PLAN.
- THE CONTRACTOR SHALL BE RESPONSIBLE FOR CONTACTING LOCAL UNDERGROUND UTILITY PROVIDERS TO VERIFY LOCATIONS. THE CONTRACTOR IS ENCOURAGED TO VISIT THE SITE PRIOR TO INSTALLATION AND BECOME FAMILIAR WITH EXISTING CONDITIONS.
- VALVE LOCATIONS ARE SCHEMATIC ONLY AND WILL BE ADJUSTED FOR SITE CONDITIONS. EACH VALVE SHALL BE INSTALLED IN A AMETEK OR CARSON VALVE BOX. THE FLOW ADJUSTMENT FEATURE WILL BE USED TO BALANCE PRESSURE THROUGHOUT THE SYSTEM.
- PIPING SHALL BE SIZED TO MINIMIZE FRICTION LOSS AND MAINTAIN FLOW VELOCITY BELOW 5 FPS.
- THE IRRIGATION CONTROLLER SHALL BE INSTALLED IN ACCORDANCE WITH LOCAL CODES AND MANUFACTURER'S RECOMMENDATIONS. PROPER GROUNDING EQUIPMENT AND SURGE PROTECTION SHALL BE PROVIDED. A RAIN SENSOR SHALL BE INSTALLED TO OVER-RIDE THE CONTROLLER.
- ALL HEADS ON RISERS SHALL BE SET AT THE HEIGHT OF ADJACENT PLANT MATERIAL.
- SPRINKLER LOCATIONS ADJACENT TO PAVEMENT, STRUCTURES, FENCES, ETC. SHALL BE OFFSET AS FOLLOWS: 12" MIN FOR POP-UP MIST HEADS, 18" FOR SHRUB RISERS, 18" FOR ROTOR HEADS, AND TYPICALLY 5 FEET FOR ROTORS ALONG UNCURBED ROADWAYS.
- ALL SLEEVING SHALL BE SCH 40 PVC TO SIZE INDICATED ON PLAN, OR IF NOT INDICATED, A MIN. OF 2 PIPE SIZES LARGER THAN SUPPLY LINE CONTAINED. ALL SLEEVES SHALL BE INSTALLED A MIN. OF 24" BELOW FINISH GRADE.
- CONTROL WIRES SHALL BE UL APPROVED PE IRRIGATION CONTROL WIRE. USE 14 GAGE CONTROL WIRE AND 12 GAGE GROUND WIRE. WIRE SHALL BE BUNDLED AND ATTACHED TO THE MAIN LINE IN TRENCH OR THROUGH WIRE SLEEVES AT PAVEMENT CROSSINGS 24" BELOW FIN. GRADE. ALL SPLICES SHALL BE MADE WITH WATERPROOF DIRECT-BURIAL SPLICE KITS AND CONTAINED IN VALVE BOXES. TWO EXTRA CONTROL WIRES SHALL BE INSTALLED TO THE FURTHEST VALVES IN EACH DIRECTION FROM THE CONTROLLER.
- PIPING IN NARROW PLANTING AREAS, PARKING ISLANDS AND PLANTERS SHALL BE SET TO ONE SIDE TO ALLOW ROOM FOR ROOT BALLS. PIPE AS INDICATED ON PLAN IS SCHEMATIC AND SHOULD BE ADJUSTED FOR FIELD CONDITIONS.
- ALL GLUE JOINTS SHALL BE CLEANED, SANDED, AND TREATED WITH A COLORED HIGH ETCH PRIMER AND JOINED USING A SOLVENT CONFORMING WITH ASTM D2564.
- SYSTEM PIPE SIZE 3/4" SHALL BE CLASS 200 PVC; SYSTEM PIPE SIZE 1" OR GREATER SHALL BE CLASS 160 PVC. SYSTEM MAIN WILL BE SCH. 40 PVC TO SIZE INDICATED ON PLAN. ALL FITTINGS WILL BE SOLVENT WELD SCH 40 PVC. MAIN LINE SHALL HAVE 24" MINIMUM COVER; ALL OTHER PIPING WILL HAVE 12" MIN. COVER. ALL BACKFILL FOR PIPE TRENCHES SHALL BE CLEAN AND FREE OF FOREIGN DEBRIS AND SHARP OBJECTS; BACKFILLED TRENCHES SHALL BE PROPERLY COMPACTED. ALL MAIN LINES WILL BE INSTALLED A MIN. OF 3' FROM ANY TREE OR PALM.
- WATERING TIME PER STATION WILL BE DETERMINED IN THE FIELD AND PER LOCAL REQUIREMENTS. REFER TO MANUFACTURER'S INSTRUCTIONS FOR PRECIPITATION RATES OF SPRINKLERS SPECIFIED.
- IRRIGATION SYSTEM TO PROVIDE 100% COVERAGE WITH 100% OVERLAP MIN. PROVIDE BUBBLERS FOR ALL NEW AND RELOCATED TREES AND PALMS.
- RUST CONTROL SYSTEM TO BE INSTALLED WITH PUMP STATION (IF FROM WELL).
- THE IRRIGATION SYSTEM IN THE RIGHT-OF-WAY IS TO INCORPORATE LOW TRAJECTORY SPRAY HEADS TO MINIMIZE OVERSPRAY.
- AS-BUILT DRAWINGS SHALL BE PREPARED BY THE CONTRACTOR AND GIVEN TO THE OWNER PRIOR TO FINAL ACCEPTANCE.



Corporate Office
301 East Atlantic Boulevard
Pompano Beach, Florida 33060-6643
(954) 788-3400

Miami-Dade County
2160 NW 82 Avenue
Doral, Florida 33122

Palm Beach County
120 N Federal Highway, Suite 208
Lake Worth, Florida 33460

Orange County
2948 E Livingston Street
Orlando, Florida 32803

State of Florida Certificate of
Authorization Number - 7928

BID / CONTRACT NO. :

REVISIONS

NO.	DESCRIPTION	DATE

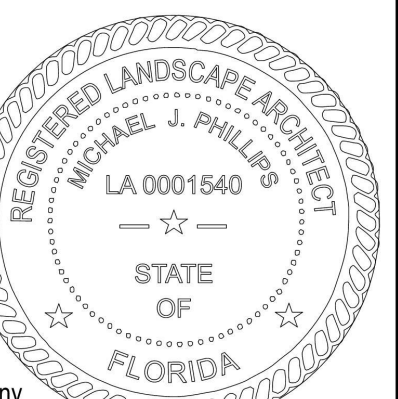
PRELIMINARY PLAN NOT FOR CONSTRUCTION

THESE PLANS ARE NOT FULLY PERMITTED AND ARE SUBJECT TO REVISIONS MADE DURING THE PERMITTING PROCESS. RESPONSIBILITY FOR THE USE OF THESE PLANS PRIOR TO OBTAINING PERMITS FROM ALL AGENCIES HAVING JURISDICTION OVER THE PROJECT WILL FALL SOLELY UPON THE USER.

LEDER 4161 HILLSBORO STORAGE

SCALE:	AS NOTED
DATE ISSUED:	07/06/2023
DRAWN BY:	KG
DESIGNED BY:	MP
CHECKED BY:	MP, KS

This item has been digitally signed and sealed by Michael J. Phillips, on the date below using a Digital Signature.



Printed copies of this document are not considered signed and sealed and the signature must be verified on any electronic copies.

MICHAEL J. PHILLIPS, R.L.A.
FLORIDA REG. NO. LA0001540
(FOR THE FIRM)

SHEET TITLE

IRRIGATION NOTES / DETAILS

SHEET NUMBER

LI-501

PROJECT NO. 09675.01

SECTION: 86120000
COUNTY: BROWARD
STATE RD: 810
PERMIT: 2023-L-491-00007

EXHIBIT C
RESOLUTION

This Exhibit forms an integral part of the LANDSCAPE MAINTENANCE MEMORANDUM OF AGREEMENT between the DEPARTMENT and the AGENCY.

Please see attached

(To be provided by the Agency)