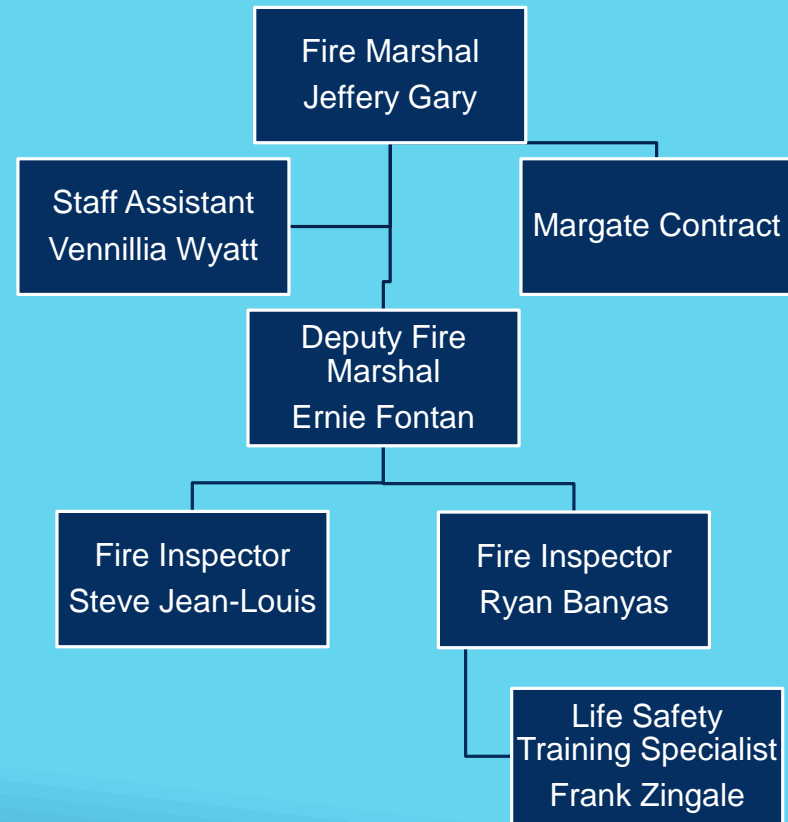


PUBLIC SAFETY ADVISORY BOARD
OCTOBER 2019
FIRE MARSHAL JEFFERY GARY



FIRE ADMINISTRATION ORGANIZATION CHART



HISTORY OF FIRE RESCUE IN COCONUT CREEK

1972 Coconut Creek Volunteer Fire Department created (Station 50)

1982 Coconut Creek Public Safety Department established

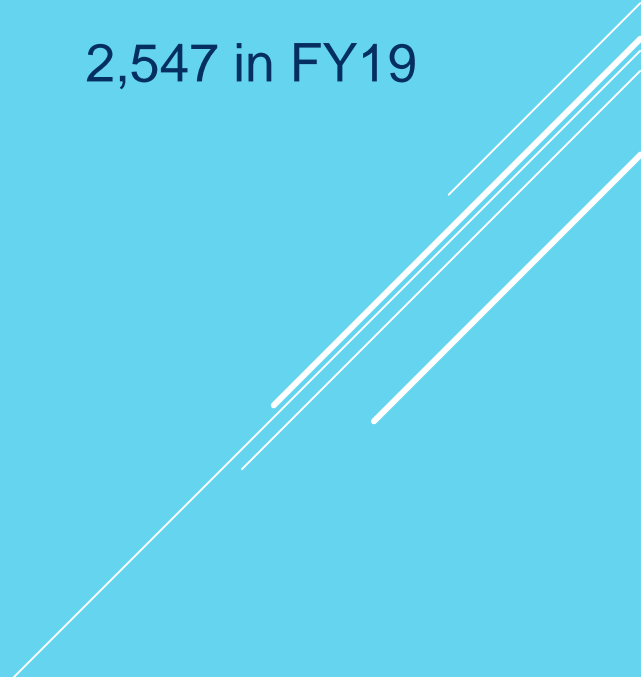
1993 Public Safety North Substation constructed (Station 94)

2000 First ILA with Margate Fire Rescue signed

2017 New Fire Station 50 opens

2021 Current ILA with Margate ends

FIRE MARSHAL OFFICE DUTIES

- ▶ Annual fire inspections of commercial and multi family occupancies. 2,547 in FY19
 - ▶ Construction plan review. 350 in FY19
 - ▶ Construction inspections. 396 in FY19
 - ▶ Fire Investigations 9 in FY19
- 
- Three white lines of varying lengths and slopes are positioned in the bottom right corner of the slide, extending from the right edge towards the center.

FIRE MARSHAL OFFICE DUTIES

- ▶ CPR training
- ▶ Fire extinguisher training
- ▶ Senior safety training
 - Fire safety training for Pre K and Elementary schools
 - 45 presentation that reached 3,432 students in FY19
- ▶ Citizen Emergency Response Team

FIRE MARSHAL OFFICE DUTIES EMERGENCY MANAGEMENT



MARGATE-COCONUT CREEK FIRE RESCUE

- ▶ Five fire stations (Station 50, Station 94, Station 18, Station 98, and Station 58)
- ▶ Two advanced life support ladder companies
- ▶ Three advanced life support engine companies
- ▶ Five advanced life support rescue units
- ▶ 7,497 calls in Coconut Creek during FY19
- ▶ ISO Class 1 in Coconut Creek since 2017

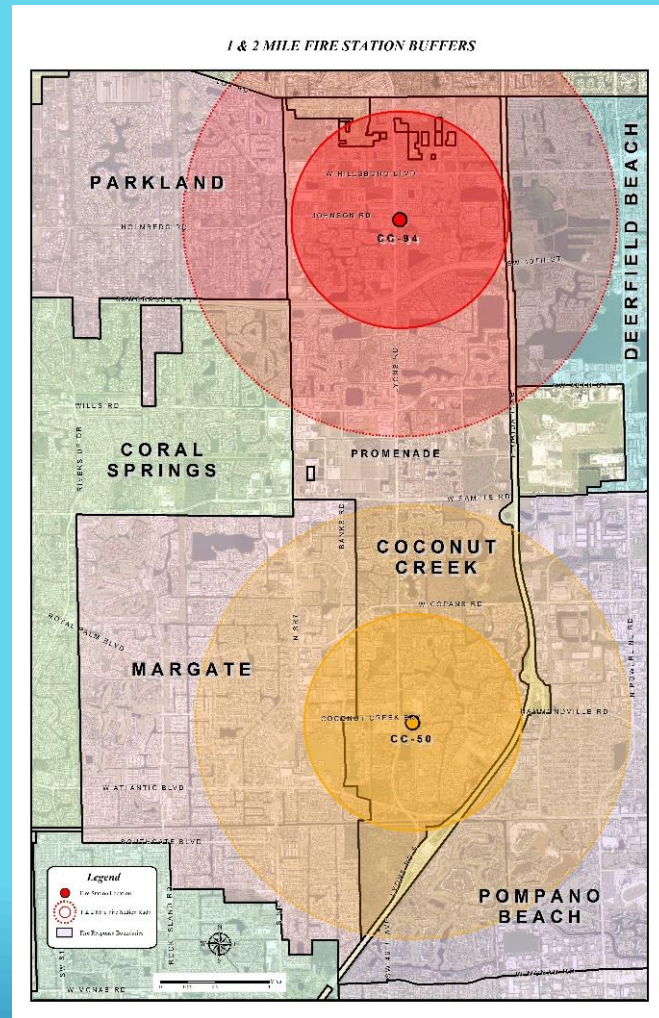




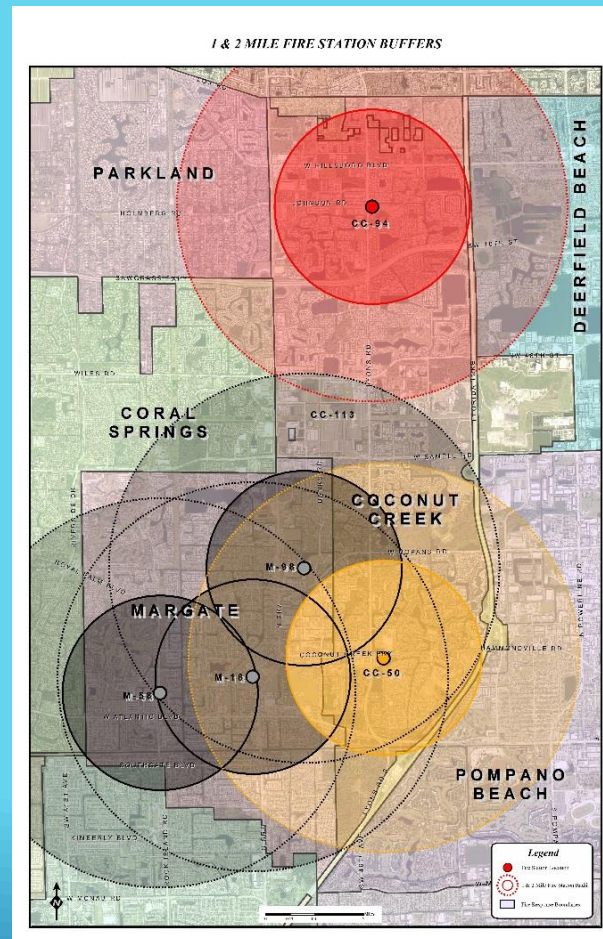




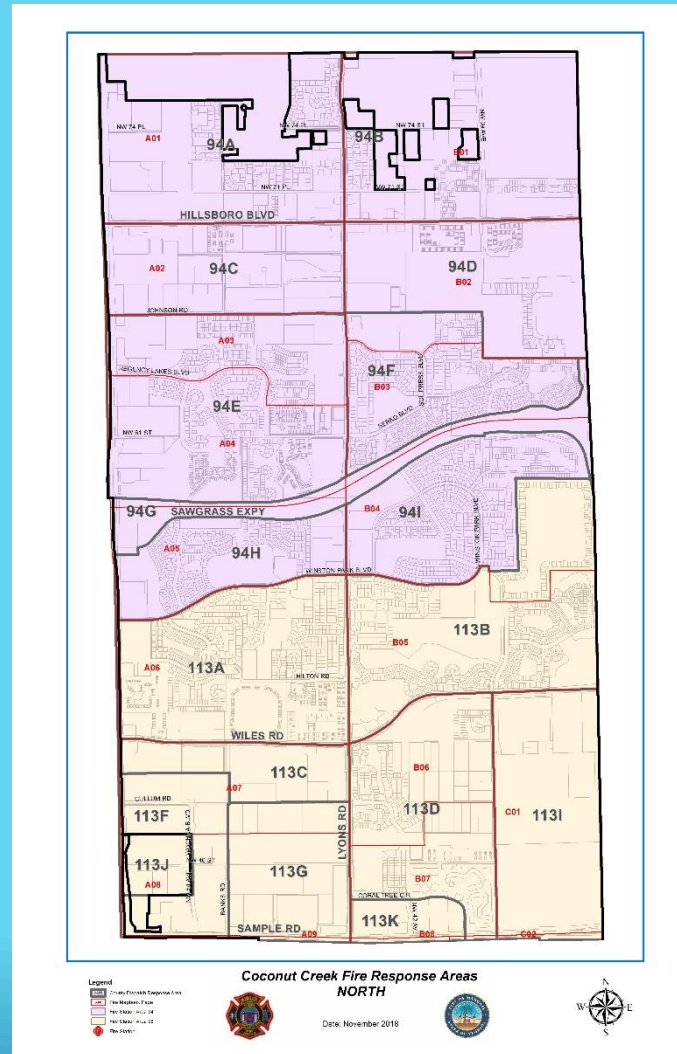
CREEK STATION LOCATIONS

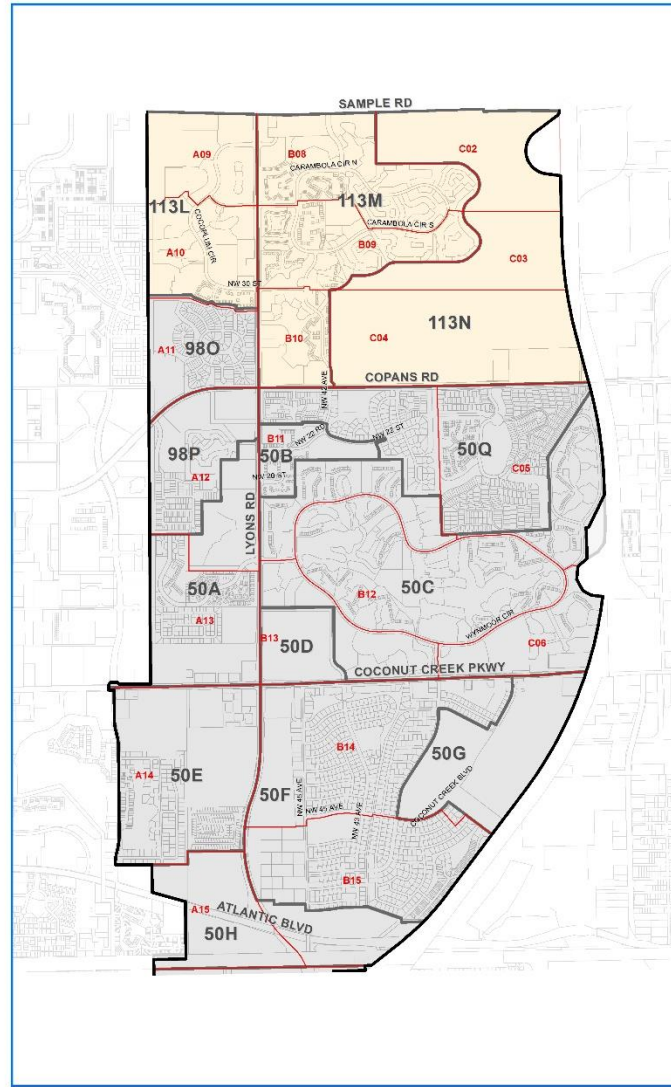


MARGATE AND CREEK STATION LOCATIONS



RESPONSE ZONES





- Legend**
- County (Shaded) - Response Area
 - Fire Station
 - Fire Station Area
 - Fire Station Area
 - Fire Station



**Coconut Creek Fire Response Areas
SOUTH**

Date: November 2018



MONTHLY DATA

2019 Creek		Dispatch to arrival of first unit											
ALL	JAN	FEB	MAR	APR	MAY	JUN	JUL	AUG	SEP	OCT	NOV	DEC	Total
All Times Call Totals	611	599	627	605	721	588	592	636					4979
Emergency Call Total	348	355	373	335	411	342	353	358					2875
Emergency Call Average	6:53	6:50	6:38	6:10	6:06	6:07	6:14	6:33					6:26
Non Emergency Call Totals	263	244	254	270	310	246	235	278					2100
Non Emergency Call Average	8:28	8:39	7:49	7:06	6:40	6:49	6:54	7:18					7:27
Emergency Fire Turnout time avg	1:25	1:43	1:28	1:29	1:21	1:10	1:27	1:32					1:26
90 percentile	2:05	3:06	2:27	2:31	2:10	1:43	2:08	2:34					2:20
Emergency Fire Response time avg	6:48	7:26	6:34	6:22	6:31	7:11	7:06	6:45					6:50
90 percentile	9:59	11:04	9:33	8:21	9:03	10:11	9:31	9:43					9:40
Emergency EMS Turnout time avg	1:35	1:35	1:27	1:25	1:19	1:22	1:25	1:20					1:26
90 percentile	6:55	2:33	2:23	2:24	2:08	2:12	2:11	2:10					2:52
Emergency EMS Response time avg	6:54	6:44	6:37	6:08	6:01	5:57	6:06	6:17					6:20
90 percentile	12:13	9:21	9:22	8:53	8:33	8:16	8:31	9:03					9:16

QUESTIONS???????