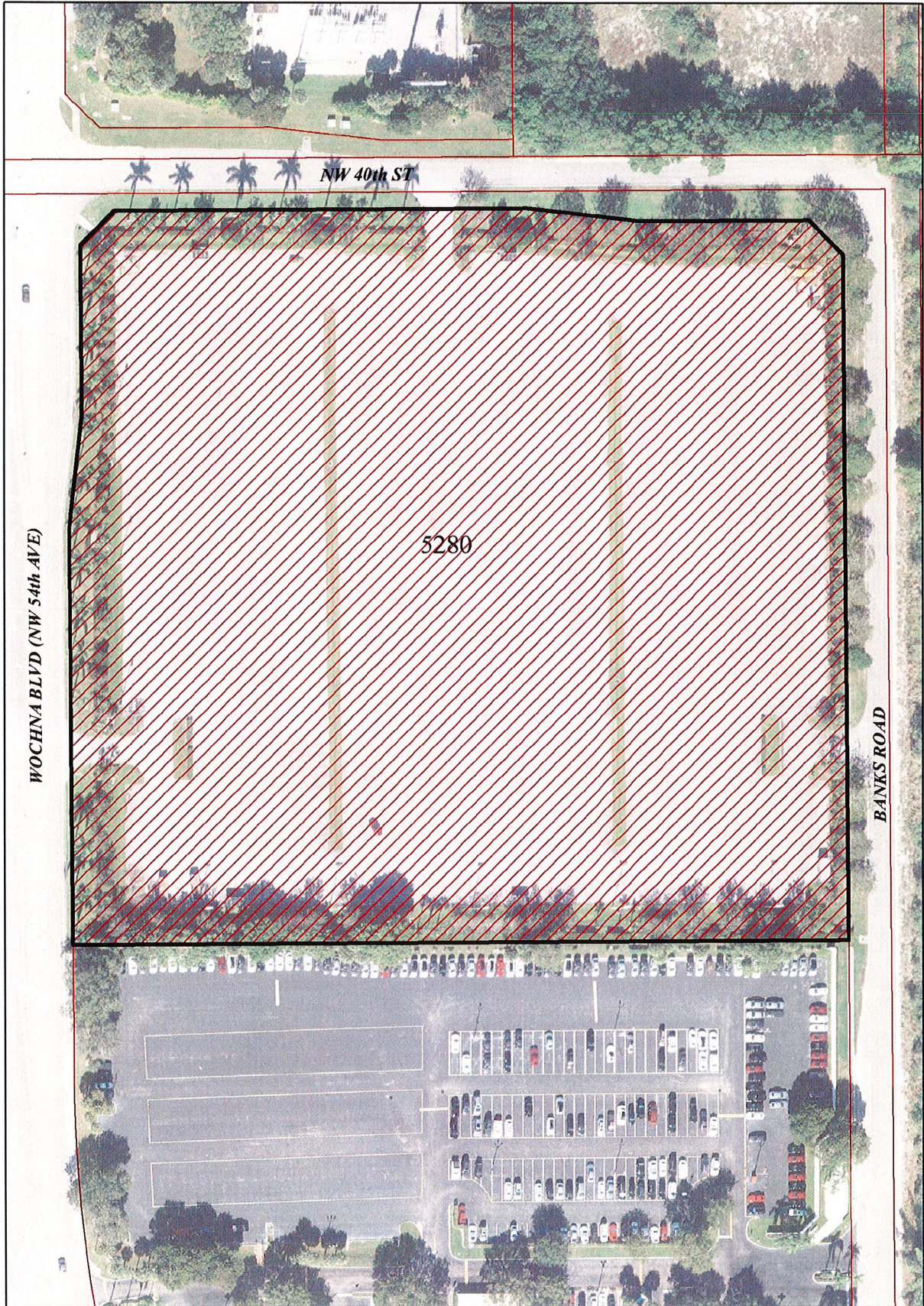


# EXHIBIT "A"

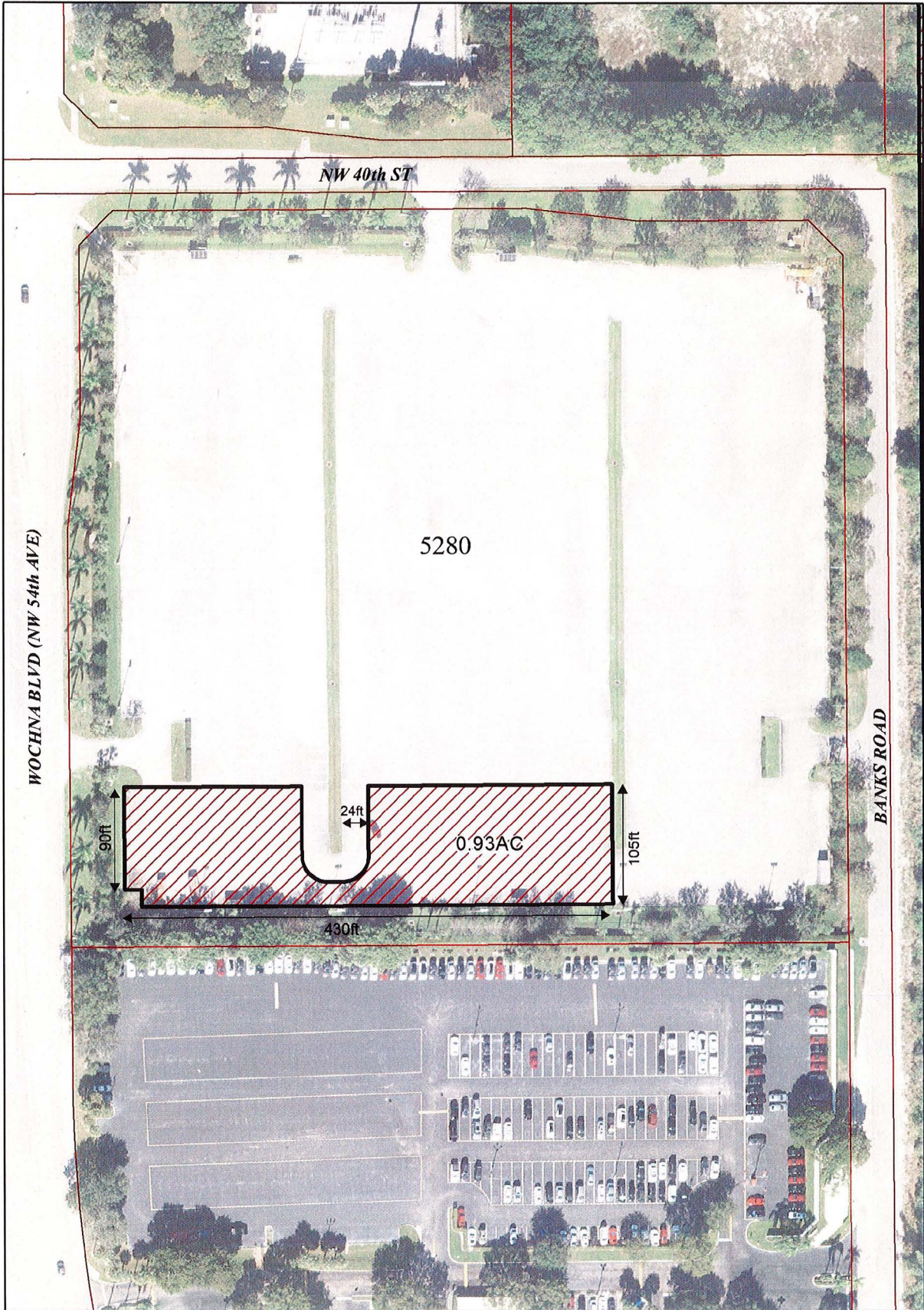
Use Area



Tract "E" Commerce Center of Coconut Creek, according to the Plat thereof, as recorded in Plat Book 131, Page 30, of the Public Records of Broward County, Florida, highlighted on the sketch depicted above, comprising approximately 10 acres

# EXHIBIT "B"

Licensed Area



That portion of Tract "E" Commerce Center of Coconut Creek, according to the Plat thereof, as recorded in Plat Book 131, Page 30, of the Public Records of Broward County, Florida, highlighted on the sketch depicted above, comprising approximately 0.93 acres