



...WITH CONFIDENCE!

Dr. Brenda C. Snipes
Broward County
Supervisor of Elections

Elections Presentation
2014

Election Process:

- ▶ Voter Education and Outreach
- ▶ Voter Registration
- ▶ Candidate Qualifying
- ▶ Voter Services
- ▶ Election Day Operations
- ▶ Election Planning and Development
- ▶ Information Technology
- ▶ Voting Equipment Center Operations

Latest Election Statistics

Current Statistics as of September, 2014

Democrats.....	541,822
Republicans.....	235,223
Others.....	282,224
Total.....	1,059,269

Voter Turnout

January 29, 2008.....	38.33%	March 9, 2010.....	9.04%
August 26, 2008.....	11.41%	August 24, 2010.....	14.93%
November 4, 2008....	73.34%	November 2, 2010...	40.99%
January 31, 2012....		21.21%	
August 14, 2012.....		10.70%	
November 6, 2012...		66.85%	

2014 Election Dates

November 4, 2014 General Election

Voter I.D. Requirements



- Florida driver's license
- Florida identification card issued by the Department of Highway Safety and Motor Vehicles
- United States passport
- Debit or credit card
- Military identification
- Student identification
- Retirement center identification
- Neighborhood association identification
- Public assistance identification

2014 EARLY VOTING

November 4, 2014 General Election:

October 20, 2014 through November 2, 2014

Monday–Friday 9:00 a.m. to 7:00 p.m.

Saturday–Sunday 7:00 a.m. to 3:00 p.m.

Election Day Check In



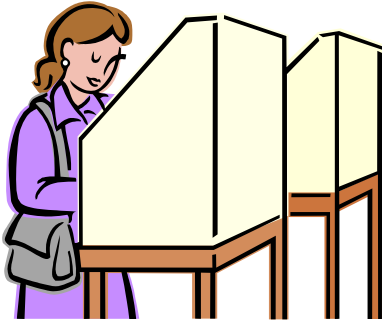
EVID **All-In-One**



- ▶ Serves as a check and balance to the voting process.
- ▶ Provides a complete paper trail for every step of the voter check-in process.
- ▶ Speeds up the voter check-in process, and voting experience as a whole.
- ▶ Easy-to-read touch screen keyboard
- ▶ Signature capture pad
- ▶ Magnetic stripe reader to read Florida driver licenses

Current Voting Process

Vote in privacy booth using writing utensil provided.



The voter will insert the ballot into the DS 200 optical scanning machine.

Two Ways to Vote on Election Day for the 2014 Elections

Paper Ballot



DS 200 Scanner

or

Touchscreen



ADA Compatible
iVotronic

Touchscreen Voting for ADA Voters



Step 2 B

**Thank You
for Voting**

**Step 1
Sign In**

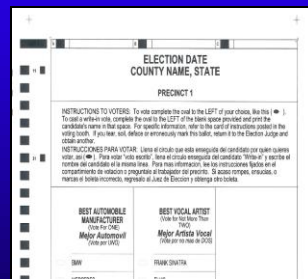


EVID Machine



Step 2 A

Step 3



Paper Ballot



Optical Scan

(must complete in
privacy booth)

(voter will
scan ballot)

Election Day Operations

- ▶ Polling Places (FL Statutes 101.715) 577 Precincts
- ▶ Election Day Workers (FL Statute 102.012)

Clerk (\$200)

Voting System Techs (\$200)

Assistant Clerk (\$170)

Field VST Super Clerks (\$200 + mileage)

Poll Deputy (\$160)

Bilingual / Inspectors (\$165)

- ▶ Training of Election Day Workers (FL Statute 102.014)
- ▶ Poll Worker Recruitment
- ▶ Hispanic and Creole speaking poll workers needed

Absentee Ballot

- ▶ **Who's eligible?**

All Broward County registered voters

- ▶ **How to request an absentee ballot**

954-357-7055, 24 hours a day, 7 days a week

- ▶ **Deadline to request an absentee ballot**

Wednesday prior to an election

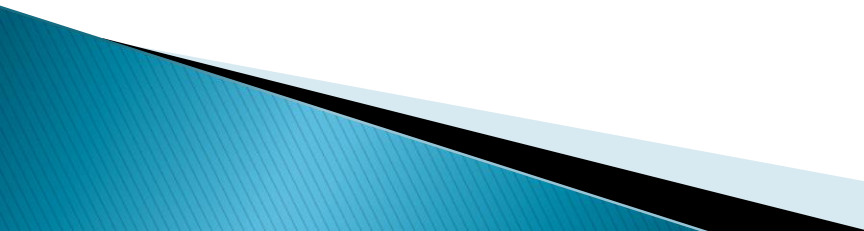
- ▶ **Absentee Ballot Rejected For:**

1. No signature

2. Late return

All ballots need to be returned to the Supervisor of Elections office by 7:00 p.m. on Election Day

Tracking Absentee Voting

- ▶ Registered voter requests an absentee ballot
 - ▶ Relia-Vote processes the absentee ballot
 - ▶ Ballot is delivered to the post office
 - ▶ Post office delivers ballot to the residence
 - ▶ Voter can mail or hand deliver the ballot to the Supervisor of Elections office by 7:00 p.m. on election night
 - ▶ Supervisor of Elections office receives and verifies
 - ▶ Ballot is tabulated on election night
 - ▶ Election night, the results are released
- 

Relia-Vote

Absentee ballot processing



VOTE

...WITH CONFIDENCE!

Dr. Brenda C. Snipes

Broward County Supervisor of Elections

www.browardsoe.org

Topics for Discussion

- ▶ Election Process
- ▶ Latest Election Statistics
- ▶ 2014 Election Dates
- ▶ 2014 Early Voting
- ▶ Election Day Check-In
- ▶ EViD Machine
- ▶ Three Ways To Vote On Election Day

What Motivates You?

