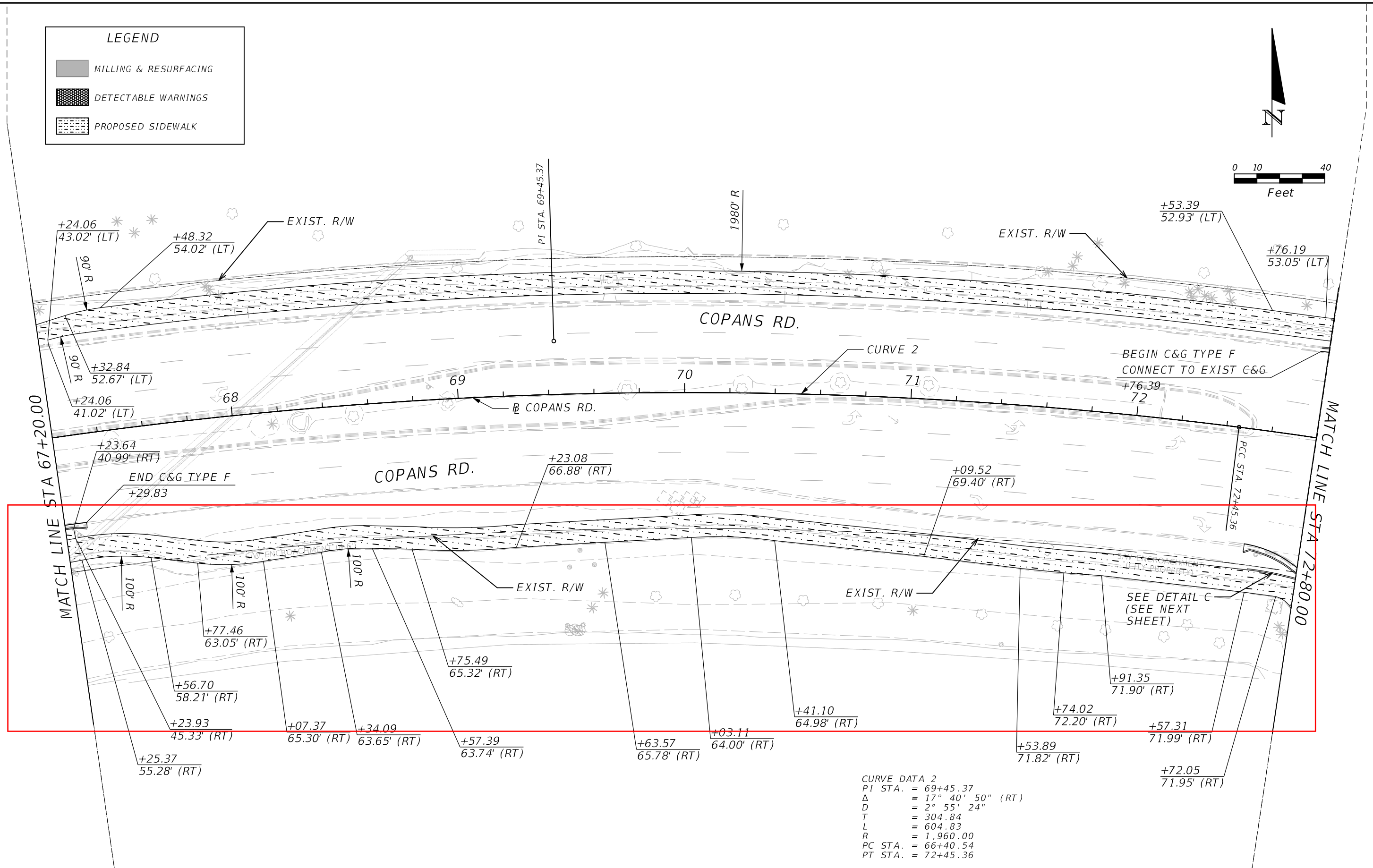
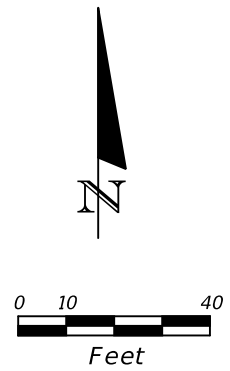


LEGEND	
	MILLING & RESURFACING
	DETECTABLE WARNINGS
	PROPOSED SIDEWALK



CURVE DATA 2
 PI STA. = 69+45.37
 Δ = 17° 40' 50" (RT)
 D = 2° 55' 24"
 T = 304.84
 L = 604.83
 R = 1,960.00
 PC STA. = 66+40.54
 PT STA. = 72+45.36

REVISIONS				RYAN M. JENSEN, P.E. P.E. LICENSE NUMBER 86609 ATKINS NORTH AMERICA, INC 800 WATERFORD WAY, 7TH FLOOR MIAMI, FL 33126	STATE OF FLORIDA DEPARTMENT OF TRANSPORTATION			SHEET NO. 15
DATE	DESCRIPTION	DATE	DESCRIPTION		ROAD NO.	COUNTY	FINANCIAL PROJECT ID	
					SR-7	BROWARD	429576-5-52-01	

ROADWAY PLAN

THE OFFICIAL RECORD OF THIS SHEET IS THE ELECTRONIC FILE DIGITALLY SIGNED AND SEALED UNDER RULE 61G15-23.004, F.A.C.