

GOLDEN RAINTREE IV POND APPLE IV

Carambola Circle South, Coconut Creek, FL 33066

SIGNAGE 02/16/2017

■ THE TOWNSHIP - COCONUT CREEK ■

161 East Railway Avenue,
Paterson, NJ 07503
973.742.7755 Fax.742.0598

B **S** **C** **BERGEN**
SIGN COMPANY

4100 North Powerline Road Suite L-2
Pompano Beach, FL 33073
954.957.9961 Fax.954.957.9014

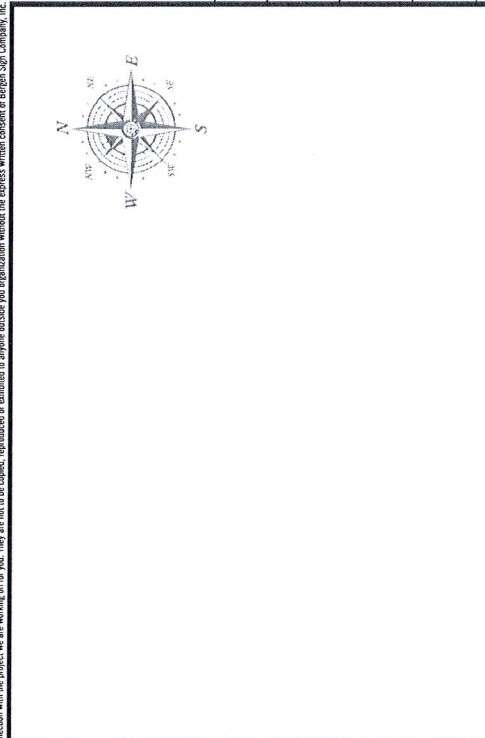
www.bergensign.com

GOLDEN RAIN TREE IV & POND APPLE IV - COCONUT CREEK

These designs are the original works of Bergen Sign Company, Inc. and are intended for your personal use in connection with the project we are working on for you. They are not to be copied, reproduced or exhibited to anyone outside your organization without the express written consent of Bergen Sign Company, Inc.



*Picture not into scale just for positioning only



VICINITY MAP

B BERGEN SIGN COMPANY
 161 East Railway Avenue,
 Paterson, NJ 07503
 973.742.7755 Fax: 742.0598
 4100 North Powderline Road Suite L-2
 Pompano Beach, FL 33073
 954.957.9951 Fax: 954.957.9914
 www.bergensign.com

Work Order:
HRT REALTY SERVICES, LLC
 Client:
**GOLDEN RAIN TREE IV
 POND APPLE IV**

Project Address
 Carambola Circle South,
 Coconut Creek, FL 33066

Customer Approval

Signature:

Approval Date

UL ALL ELECTRIC SIGNS ARE
 UL LISTED AND LABELED

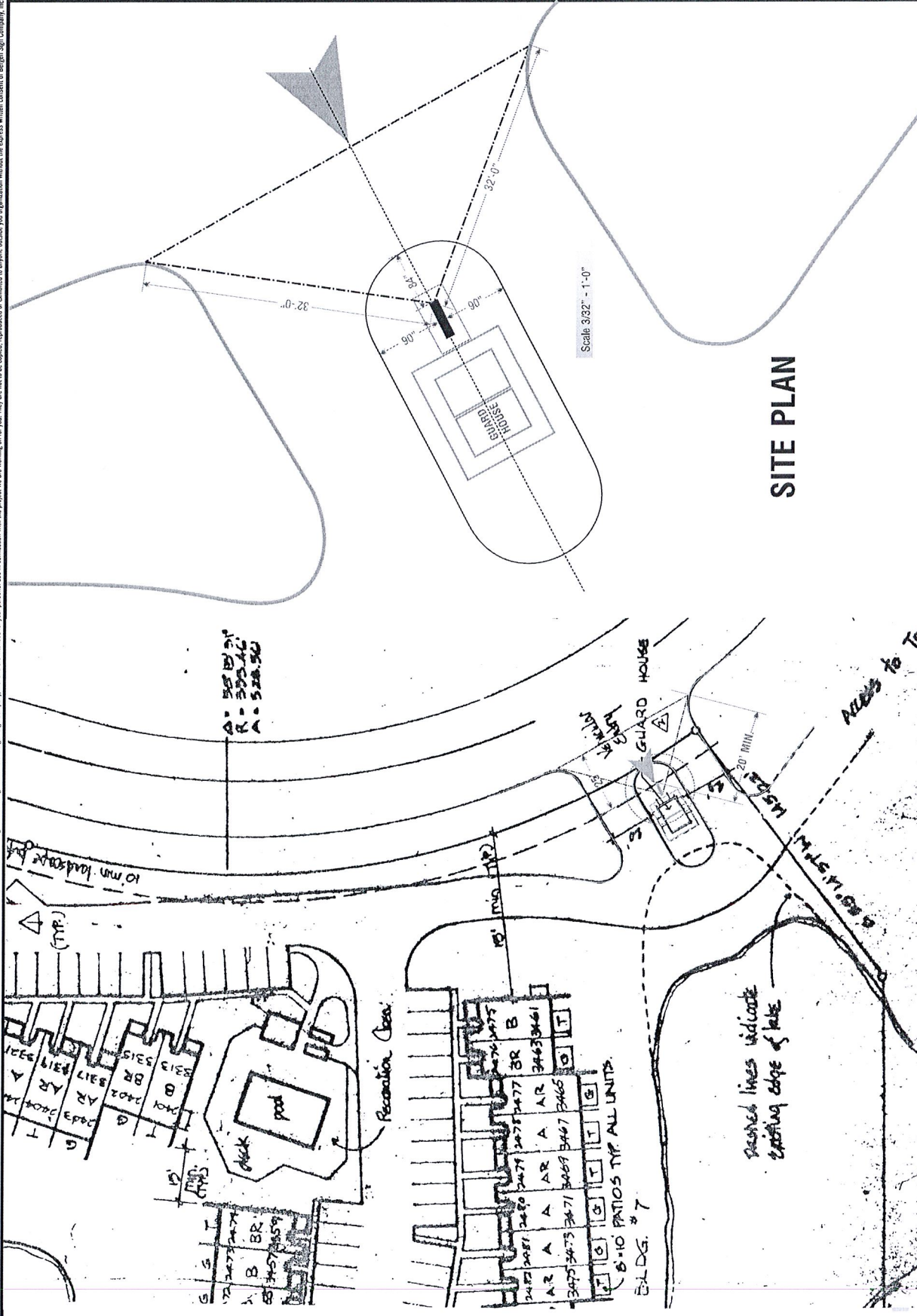
Engineer Information:

Engineer Seal

ENGINEER COMMENT:
 Design, Fabrication & Construction Shall
 Conform to State & City Codes
 Drawing By: Margie
 HRT Realty Services - Golden R
 Date: 02/16/2017
 Sheet: 02

GOLDEN RAINTREE IV & POND APPLE IV - COCONUT CREEK

These designs are the original works of Bergen Sign Company, Inc. and are intended for your personal use in connection with the project we are working on for you. They are not to be copied, reproduced or exhibited in any way without the express written consent of Bergen Sign Company, Inc.



B BERGEN SIGN COMPANY

161 East Railway Avenue,
Palm Beach, FL 33408
954.957.9951 Fax: 954.957.9014
www.bergen-sign.com

4100 North Powerline Road Suite L-2
Pompano Beach, FL 33073
954.957.9951 Fax: 954.957.9014
www.bergen-sign.com

Work Order:
HRT REALTY SERVICES, LLC

Client:
GOLDEN RAINTREE IV
POND APPLE IV

Project Address:
Carambola Circle South,
Coconut Creek, FL 33066

Customer Approval

Signature

Approval Date

ALL ELECTRIC SIGNS ARE UL LISTED AND LABELED

Engineer Information:

Engineer Seal

ENGINEER COMMENT:
Design, Fabrication & Construction Shall Conform to State & City Codes

Drawing By: Margie
HRT Realty Services - Golden R

Date: 02/16/2017
Sheet: 03

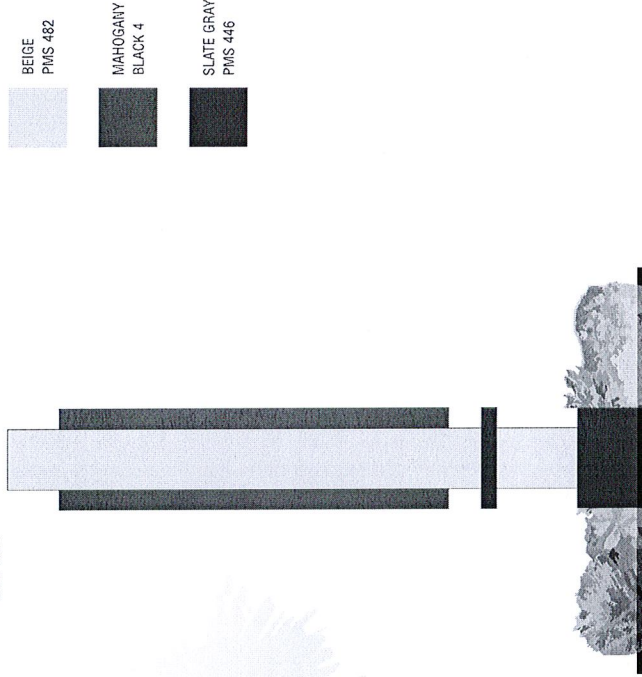
GOLDEN RAINTREE IV & POND APPLE IV - COCONUT CREEK

These designs are the original works of Bergen Sign Company, Inc. and are intended for your personal use in connection with the project we are working on for you. They are not to be copied, reproduced or exhibited to anyone outside your organization without the express written consent of Bergen Sign Company, Inc.

FRONT VIEW



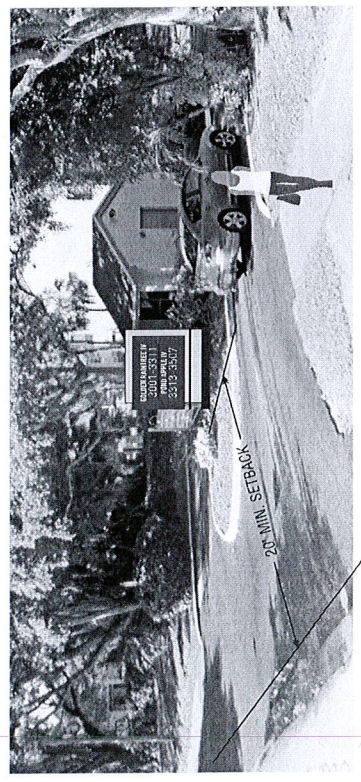
SIDE VIEW



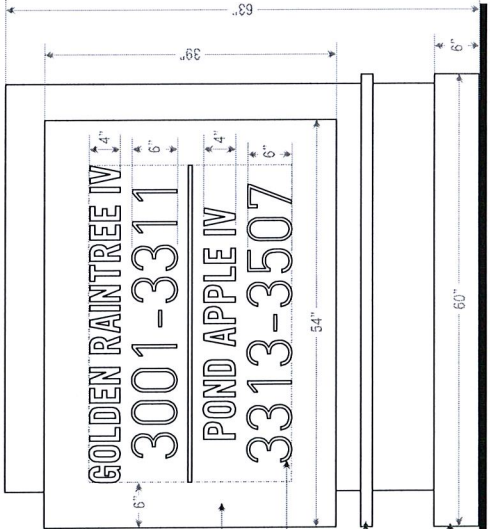
- BEIGE
PMS 482
- MAHOAGANY
BLACK 4
- SLATE GRAY
PMS 446

Planting bed at ground level, 2-foot width minimum surrounded monument containing mulch and ground covers with irrigation. Maintained to a maximum height of twelve (12) inches provided by others.

INTERNALLY ILLUMINATED DOUBLE SIDED MONUMENT SIGN



Monument to be installed 20 Feet minimum of setback from: right of way, centered within concrete curved area



Total sign structure area: 63x60=3780 = 26.5 Sq.Ft.
 Sign face area allowed 60% of 26.5 = 15.9
 Sign face area proposed: 39x54=2106/144=14.6

125" Routed out face with 0.5" minimum push thru acrylic lettering with a 6" of perimeter clearance

1.5" Aluminum square decorative tube

6" height Welded aluminum base

Scale: 3/4" = 1'-0"



161 East Railway Avenue,
 Paterson, NJ 07503
 973.742.7755 Fax:742.0598

4100 North Powerline Road Suite L-2
 Pompano Beach, FL 33073
 954.957.9961 Fax:954.857.9014
 www.bergen-sign.com

Work Order:
 HRT REALTY SERVICES, LLC
 GOLDEN RAINTREE IV
 POND APPLE IV

Project Address
 Carambola Circle South,
 Coconut Creek, FL 33066

Customer Approval
 Signature

Approval Date
 All Electric Signs are UL Listed and Labeled



Engineer Information:
 Engineer Seal

ENGINEER COMMENT:
 Design, Fabrication & Construction Shall Conform to State & City Codes

Drawing By: Marglie
 HRT Realty Services - Golden R

Date: 02/16/2017
 Sheet: 04

GOLDEN RAINTREE IV & POND APPLE IV - COCONUT CREEK

These designs are the original works of Bergen Sign Company, Inc. and are intended for your personal use in connection with the project we are working on for you. They are not to be copied, reproduced or exhibited to anyone outside your organization without the express written consent of Bergen Sign Company, Inc.

BSC BERGEN SIGN COMPANY
 161 East Railway Avenue,
 Paterson, NJ 07503
 973.742.7755 Fax: 742.0598

1800 North Powerline Road Suite L-2
 Pompano Beach, FL 33073
 Client: 954.957.9951 Fax: 954.957.9014
 www.bergensign.com

Work Order:
HRT REALTY SERVICES, LLC

**GOLDEN RAINTREE IV
 POND APPLE IV**

Project Address
 Carambola Circle South,
 Coconut Creek, FL 33066

Customer Approval

Signature:

Approval Date

NOTE TO CONTRACTOR: Please be sure that all the information on this drawing is reviewed and understood before construction begins. All dimensions are in feet and inches unless otherwise noted. All materials shall be of the highest quality. All materials shall be UL listed and labeled. All electrical signs are UL listed and labeled. All electrical signs are UL listed and labeled.



ALL ELECTRIC SIGNS ARE
 UL LISTED AND LABELED

Engineer Information:

Engineer Seal

ENGINEER COMMENT:

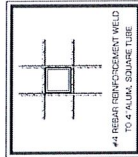
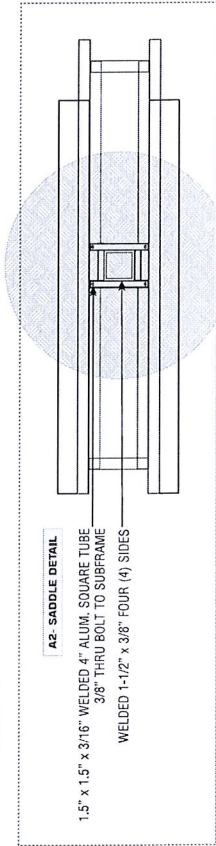
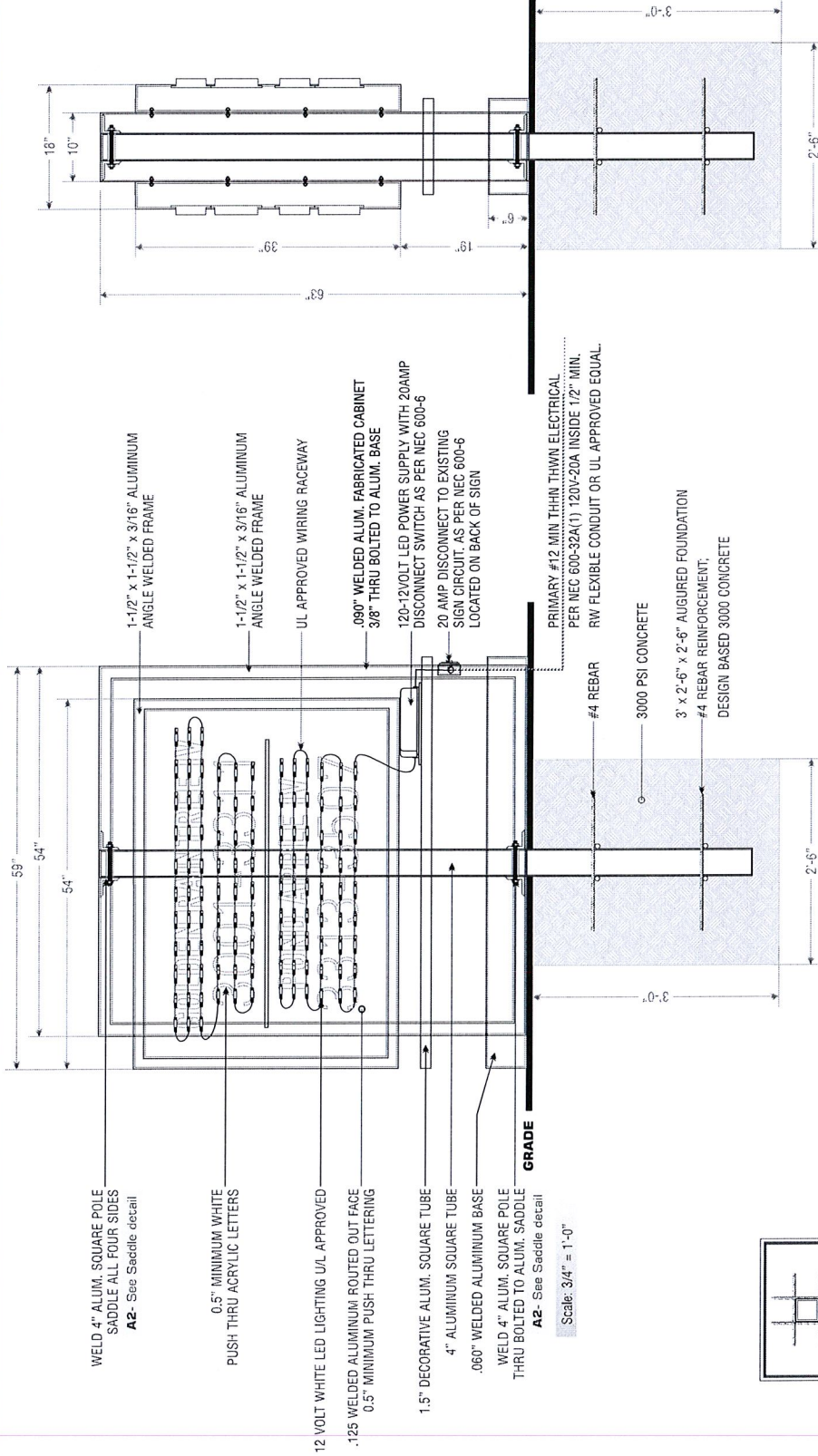
Design, Fabrication & Construction Shall
 Conform to State & City Codes

Drawing By: Margie

HRT Realty Services - Golden R

Date: 02/16/2017

Sheet: 05



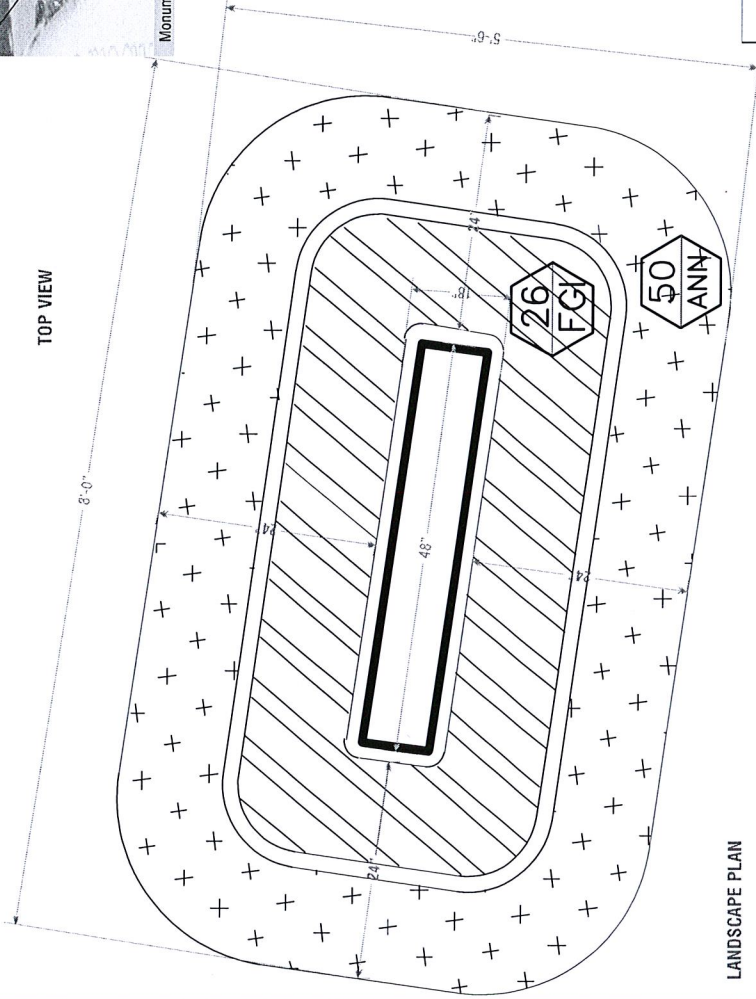
Scale: 3/4" = 1'-0"

GOLDEN RAINTREE IV & POND APPLE IV - COCONUT CREEK

These designs are the original works of Bergen Sign Company, Inc. and are intended for your personal use in connection with the project we are working on for you. They are not to be copied, reproduced or exhibited to anyone outside your organization without the express written consent of Bergen Sign Company, Inc.

**All landscaping material to be Florida number 1 grade or better,
all Florida native provided by others.**

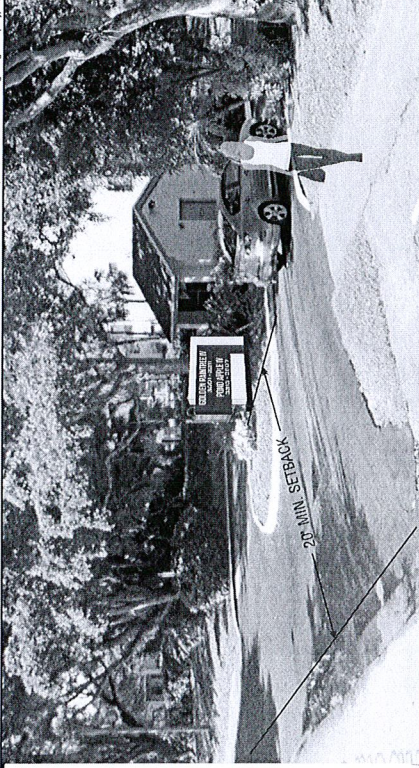
TOP VIEW



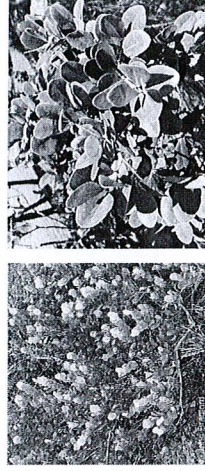
LANDSCAPE PLAN

Planting bed at ground level, with a minimum of 2" height mulch and 2 feet width minimum surrounded monument containing mulch and ground covers.

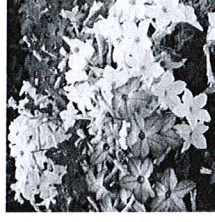
Professionally maintained and equipped with a properly installed underground automatically controlled irrigation systems equipped with rain sensors to prohibit the system from operation during periods of rain. The irrigation system will provide 100% coverage with a 50% overlap for all landscaping areas.



Monument to be installed 20 Feet minimum of setback from right of way, centered within concrete curved area



26
FGI



50
ANN



2" MULCH PROVIDED
AROUND ALL SHRUBS

SHRUBS & GROUNDCOVERS	KEY	QUANTITY	PLANT NAME AND SPECIFICATION
	ANN	50	Flowering Annuals (Per Season) 4" pot, full, 12" o.c., per owner & L.A.
	FGI	26	Chrysobalanus icaco - coco plum - Chrysobalanaceae Eugenia foetida - Spanish stopper, boxleaf stopper



161 East Railway Avenue,
Faberston, NJ 07508
973.742.7755 Fax: 973.742.0588
4100 North Powderline Road Suite L-2
Pompano Beach, FL 33073
Client: 1.957.9961 Fax: 954.957.9014
www.bergen-sign.com

Work Order:

HRT REALTY SERVICES, LLC

GOLDEN RAINTREE IV
POND APPLE IV

Project Address:

Carambola Circle South,
Coconut Creek, FL 33066

Customer Approval:

Signature:

Approval Date:

NOTE TO CONTRACTOR: Please see the information on the drawings for the plants to be installed. These plants will be manufactured during the time intervals. Any plants not available at the time of installation should be substituted with similar plants of the same color and height. The plants should be installed in the same order as shown on the drawings. The plants should be installed in the same order as shown on the drawings. The plants should be installed in the same order as shown on the drawings. The plants should be installed in the same order as shown on the drawings.



Engineer Information:

Engineer Seal:

ENGINEER COMMENT:
Design, Fabrication & Construction Shall
Conform to State & City Codes

Drawing By: Margie

HRT Realty Services - Golden R

Date: 02/16/2017

Sheet: 06