



D-Series Size 0 LED Area Luminaire



Catalog
Number

Notes

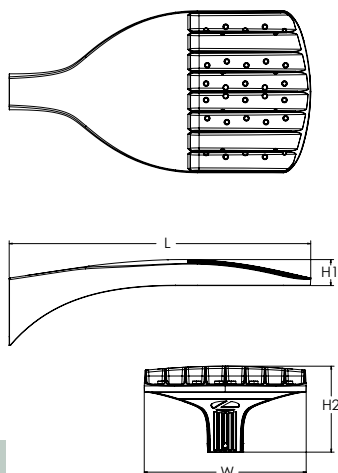
Type

Hit the Tab key or mouse over the page to see all interactive elements.

d^{series}

Specifications

EPA:	0.44 ft ² (0.04 m ²)
Length:	26.18" (66.5 cm)
Width:	14.06" (35.7 cm)
Height H1:	2.26" (5.7 cm)
Height H2:	7.46" (18.9 cm)
Weight:	23 lbs (10.4 kg)



ds Design Select options indicated by this color background.

Introduction

The modern styling of the D-Series features a highly refined aesthetic that blends seamlessly with its environment. The D-Series offers the benefits of the latest in LED technology into a high performance, high efficacy, long-life luminaire.

The photometric performance results in sites with excellent uniformity, greater pole spacing and lower power density. D-Series outstanding photometry aids in reducing the number of poles required in area lighting applications, with typical energy savings of 70% and expected service life of over 100,000 hours.



Items marked by a shaded background qualify for the Design Select program and ship in 15 days or less. To learn more about Design Select, visit www.acuitybrands.com/designselect.
*See ordering tree for details

Ordering Information

EXAMPLE: DSX0 LED P6 40K 70CRI T3M MVOLT SPA NLTAIR2 PIRHN DDBXD

DSX0 LED												
Series	LEDs	Color temperature ²	Color Rendering Index ²	Distribution		Voltage	Mounting					
DSX0 LED	Forward optics		(this section 70CRI only)	AFR	Automotive front row	T5M	Type V medium	MVOLT	(120V-277V) ⁴	Shipped included		
	P1	P5	30K 3000K	70CRI	T1S	Type I short	T5LG	Type V low glare	HVOLT	(347V-480V) ^{5,6}	SPA	Square pole mounting (#8 drilling, 3.5" min. SQ pole)
	P2	P6	40K 4000K	70CRI	T2M	Type II medium	T5W	Type V wide	XVOLT	(277V-480V) ^{7,8}	RPA	Round pole mounting (#8 drilling, 3" min. RND pole)
	P3	P7	50K 5000K	70CRI	T3M	Type III medium	BLC3	Type III backlight control ³	120 ^{16, 24}	208 ^{16, 24}	SPA5	Square pole mounting (#5 drilling, 3" min. SQ pole) ⁹
	P4				T3LG	Type III low glare ³	BLC4	Type IV backlight control ³	240 ^{16, 24}	277 ^{16, 24}	RPAS	Round pole mounting (#5 drilling, 3" min. RND pole) ⁹
	Rotated optics		27K 2700K	80CRI	T4M	Type IV medium	LCCO	Left corner cutoff ³	347 ^{16, 24}	480 ^{16, 24}	SPA8N	Square narrow pole mounting (#8 drilling, 3" min. SQ pole)
	P10 ¹	P12 ¹	30K 3000K	80CRI	T4LG	Type IV low glare ³	RCCO	Right corner cutoff ³			WBA	Wall bracket ¹⁰
	P11 ¹	P13 ¹	35K 3500K	80CRI	TFTM	Forward throw medium					MA	Mast arm adapter (mounts on 2 3/8" OD horizontal tenon)
			40K 4000K	80CRI								
			50K 5000K	80CRI								

Control options	Other options	Finish (required)
Shipped installed	Shipped installed	DDBXD Dark Bronze
NLTAIR2 PIRHN nLight AIR gen 2 enabled with bi-level motion / ambient sensor, 8-40' mounting height, ambient sensor enabled at 2fc ^{11, 12, 18, 19}	HS Houseside shield (black finish standard) ²⁰	DBLXD Black
PIR High/low, motion/ambient sensor, 8-40' mounting height, ambient sensor enabled at 2fc ^{13, 18, 19}	L90 Left rotated optics ¹	DNAXD Natural Aluminum
PER NEMA twist-lock receptacle only (controls ordered separate) ¹⁴	R90 Right rotated optics ¹	DWHXD White
PERS Five-pin receptacle only (controls ordered separate) ^{14, 19}	CCE Coastal Construction ²¹	DDBTXD Textured dark bronze
PER7 Seven-pin receptacle only (controls ordered separate) ^{14, 19}	HA 50°C ambient operation ²²	DBLBXD Textured black
FAO Field adjustable output ^{15, 19}	BAA Buy America(n) Act and/or Build America Buy America Qualified	DNATXD Textured natural aluminum
BL30 Bi-level switched dimming, 30% ^{16, 19}	SF Single fuse (120, 277, 347V) ²⁴	DWHGXD Textured white
BL50 Bi-level switched dimming, 50% ^{16, 19}	DF Double fuse (208, 240, 480V) ²⁴	
DMG 0-10v dimming wires pulled outside fixture (for use with an external control, ordered separately) ¹⁷	Shipped separately	
	EGSR External Glare Shield (reversible, field install required, matches housing finish)	
	BSDB Bird Spikes (field install required)	



One Lithonia Way • Conyers, Georgia 30012 • Phone: 1-800-705-SERV (7378) • www.lithonia.com
© 2011-2025 Acuity Brands Lighting, Inc. All rights reserved.

DSX0-LED
Rev. 04/29/25
Page 1 of 9

Ordering Information

Accessories

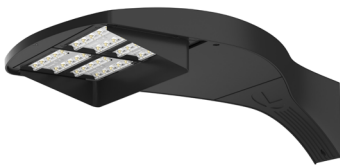
Ordered and shipped separately.

DLL127F 1.5 JU	Photocell - SSL twist-lock (120-277V) ²³
DLL347F 1.5 CUL JU	Photocell - SSL twist-lock (347V) ²³
DLL480F 1.5 CUL JU	Photocell - SSL twist-lock (480V) ²³
DSHORT SBK	Shorting cap ²³
DSX0HS P#	House-side shield (enter package number P1-7, P10-13 in place of #)
DSXRPA (FINISH)	Round pole adapter (#8 drilling, specify finish)
DSXRPA5 (FINISH)	Round pole adapter #5 drilling (specify finish)
DSXSPA5 (FINISH)	Square pole adapter #5 drilling (specify finish)
DSX0EGSR (FINISH)	External glare shield (specify finish)
DSX0BDB (FINISH)	Bird spike deterrent bracket (specify finish)

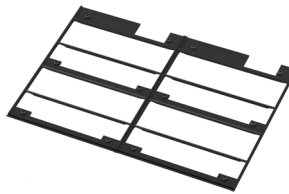
NOTES

- 1 Rotated optics available with packages P10, P11, P12 and P13. Must be combined with option L90 or R90.
- 2 30K, 40K, and 50K available in 70CRI and 80CRI. 27K and 35K only available with 80CRI. Contact Technical Support for other possible combinations.
- 3 T3LG, T4LG, BLC3, BLC4, LCCO, RCCO not available with option HS.
- 4 MVOLT driver operates on any line voltage from 120-277V (50/60 Hz).
- 5 HVOLT driver operates on any line voltage from 347-480V (50/60 Hz).
- 6 HVOLT not available with package P1, P2 and P10 when combined with option NLTAIR2 PIRHN or option PIR.
- 7 XVOLT operates with any voltage between 277V and 480V (50/60 Hz).
- 8 XVOLT not available in packages P1, P2 or P10. XVOLT not available with fusing (SF or DF).
- 9 SPAS and RPA5 for use with #5 drilling only (Not for use with #8 drilling).
- 10 WBA cannot be combined with Type 5 distributions plus photocell (PER).
- 11 NLTAIR2 and PIRHN must be ordered together. For more information on nLight Air 2.
- 12 NLTAIR2 PIRHN not available with other controls including PIR, PER, PER5, PER7, FAO, BL30, BL50 and DMG. NLTAIR2 PIRHN not available with P1, P2 and P10 using HVOLT. NLTAIR2 PIRHN not available with P1, P2 and P10 using XVOLT. NLTAIR2 PIRHN not available with P1 using MVOLT.
- 13 PIR not available with NLTAIR2, PER, PER5, PER7, FAO BL30, BL50 and DMG. PIR not available with P1, P2 and P10 using HVOLT. PIR not available with P1, P2 and P10 using XVOLT. PIR not available with P1 using MVOLT.
- 14 PER/PER5/PER7 not available with NLTAIR2, PIR, BL30, BL50. Photocell ordered and shipped as a separate line item from Acuity Brands Controls. See accessories. Shorting Cap included.
- 15 FAO not available with other dimming control options NLTAIR2 PIRHN, PIR, PER5, PER7, BL30, BL50, or DMG.
- 16 BL30 and BL50 are not available with NLTAIR2 PIRHN, PIR, PER, PER5, PER7, FAO and DMG. BL30 or BL50 must specify 120 or 277V.
- 17 DMG not available with NLTAIR2 PIRHN, PIR, PER, PER5, PER7, BL30, BL50 and FAO.
- 18 Reference Motion Sensor Default Settings table on page 4 to see functionality.
- 19 Reference Controls Options table on page 4.
- 20 Option HS not available with T3LG, T4LG, BLC3, BLC4, LCCO and RCCO distribution. Also available as a separate accessory; see Accessories information.
- 21 CCE option not available with option BS and EGSR. Contact Technical Support for availability.
- 22 Option HA not available with performance packages P6, P7, P12 and P13.
- 23 Requires luminaire to be specified with PER, PER5 or PER7 option. See Controls Table on page 4.
- 24 Single fuse (SF) requires 120V, 277V, or 347V. Double fuse (DF) requires 208V, 240V or 480V. XVOLT not available with fusing (SF or DF).

Shield Accessories



External Glare Shield (EGSR)

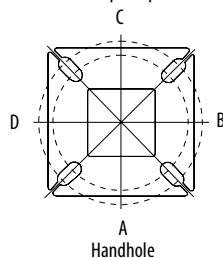


House Side Shield (HS)

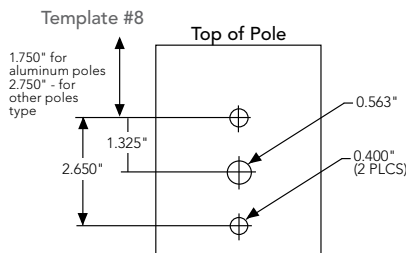
Drilling

HANDHOLE ORIENTATION

(from top of pole)



Handhole



Tenon Mounting Slipfitter

Tenon O.D.	Mounting	Single Unit	2 @ 180	2 @ 90	3 @ 90	3 @ 120	4 @ 90
2-3/8"	RPA	AS3-5 190	AS3-5 280	AS3-5 290	AS3-5 390	AS3-5 320	AS3-5 490
2-7/8"	RPA	AST25-190	AST25-280	AST25-290	AST25-390	AST25-320	AST25-490
4"	RPA	AST35-190	AST35-280	AST35-290	AST35-390	AST35-320	AST35-490

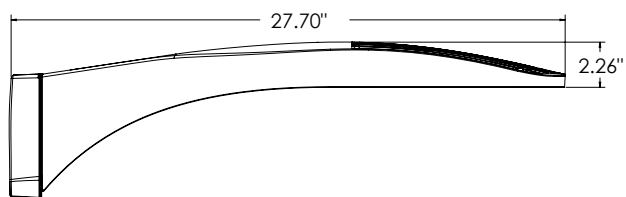
Mounting Option	Drilling Template	Single	2 @ 180	2 @ 90	3 @ 90	3 @ 120	4 @ 90
Head Location		Side B	Side B & D	Side B & C	Side B, C & D	Round Pole Only	Side A, B, C & D
Drill Nomenclature	#8	DM19AS	DM28AS	DM29AS	DM39AS	DM32AS	DM49AS
Minimum Acceptable Outside Pole Dimension							
SPA	#8	3.5"	3.5"	3.5"	3.5"		3.5"
RPA	#8	3"	3"	3"	3"	3"	3"
SPAS	#5	3"	3"	3"	3"		3"
RPA5	#5	3"	3"	3"	3"	3"	3"
SPA8N	#8	3"	3"	3"	3"		3"

DSX0 Area Luminaire - EPA

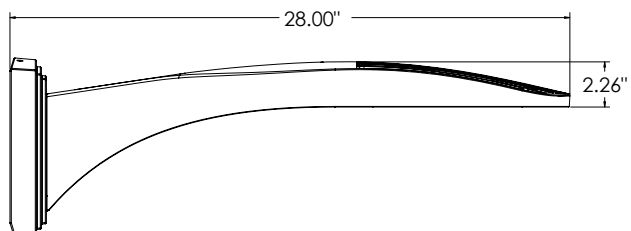
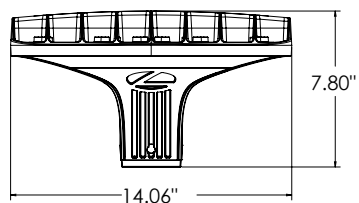
*Includes luminaire and integral mounting arm. Other tenons, arms, brackets or other accessories are not included in this EPA data.

Fixture Quantity & Mounting Configuration	Single DM19	2 @ 180 DM28	2 @ 90 DM29	3 @ 90 DM39	3 @ 120 DM32	4 @ 90 DM49
Mounting Type						
DSX0 with SPA	0.44	0.88	0.96	1.18	---	1.16
DSX0 with SPAS, SPA8N	0.51	1.02	1.06	1.26	---	1.29
DSX0 with RPA, RPA5	0.51	1.02	1.06	1.26	1.24	1.29
DSX0 with MA	0.64	1.28	1.24	1.67	1.70	1.93

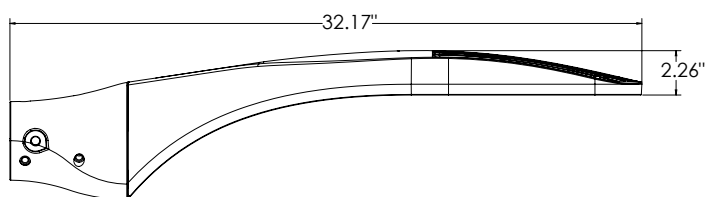
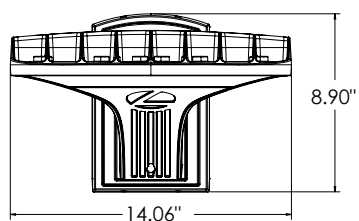
Dimensions



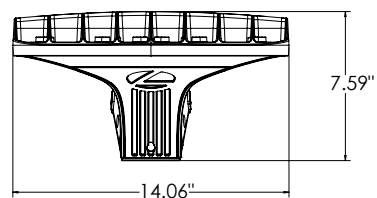
DSX0 with RPA, RPA5, SPA5, SPA8N mount
Weight: 25 lbs



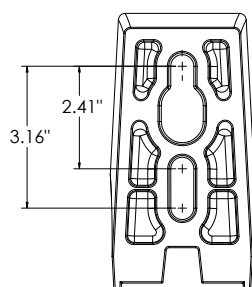
DSX0 with WBA mount
Weight: 27 lb



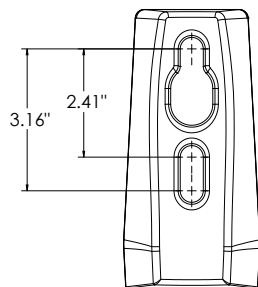
DSX0 with MA mount
Weight: 28 lbs



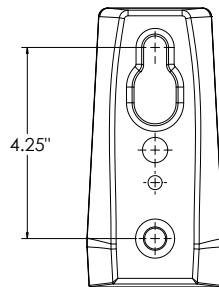
SPA (STANDARD ARM)



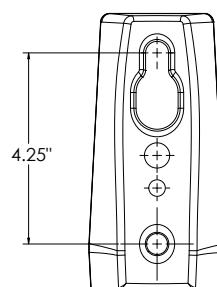
RPA



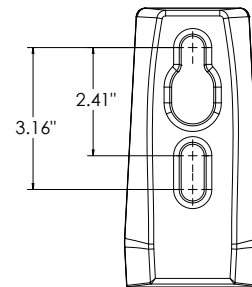
SPA5



RPA5

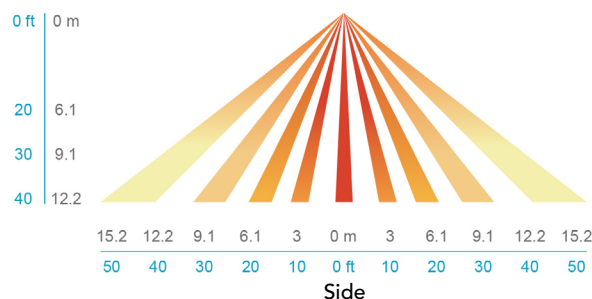
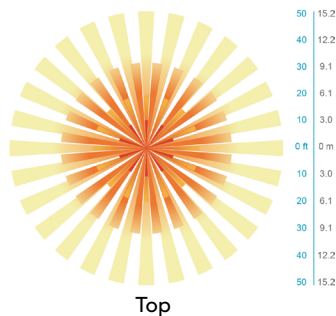
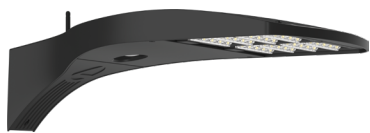


SPA8N



nLight Sensor Coverage Pattern

NLTAIR2 PIRHN



FEATURES & SPECIFICATIONS

INTENDED USE

The sleek design of the D-Series Size 0 reflects the embedded high performance LED technology. It is ideal for many commercial and municipal applications, such as parking lots, plazas, campuses, and pedestrian areas.

CONSTRUCTION

Single-piece die-cast aluminum housing has integral heat sink fins to optimize thermal management through conductive and convective cooling. Modular design allows for ease of maintenance and future light engine upgrades. The LED driver is mounted in direct contact with the casting to promote low operating temperature and long life. Housing driver compartment is completely sealed against moisture and environmental contaminants (IP66). Vibration rated per ANSI C136.31 for 3G. Low EPA (0.44 ft²) for optimized pole wind loading.

FINISH

Exterior parts are protected by a zinc-infused Super Durable TGIC thermoset powder coat finish that provides superior resistance to corrosion and weathering. A tightly controlled multi-stage process ensures a minimum 3 mils thickness for a finish that can withstand extreme climate changes without cracking or peeling. Available in both textured and non-textured finishes.

COASTAL CONSTRUCTION (CCE)

Optional corrosion resistant construction is engineered with added corrosion protection in materials and/or pre-treatment of base material under super durable paint. Provides additional corrosion protection for applications near coastal areas. Finish is salt spray tested to over 5,000 hours per ASTM B117 with scribe rating of 10. Additional lead-times may apply.

OPTICS

Precision-molded proprietary silicone lenses are engineered for superior area lighting distribution, uniformity, and pole spacing. Light engines are available in 3000 K, 4000 K or 5000 K (70 CRI) configurations. 80CRI configurations are also available. The D-Series Size 0 has zero uplight and qualifies as a Nighttime Friendly™ product, meaning it is consistent with the LEED® and Green Globes™ criteria for eliminating wasteful uplight.

ELECTRICAL

Light engine(s) configurations consist of high-efficacy LEDs mounted to metal-core circuit boards to maximize heat dissipation and promote long life (up to L80/100,000 hours at 25°C). Class 1 electronic drivers are designed to have a power factor >90%, THD <20%, and an expected life of 100,000 hours with <1% failure rate. Easily serviceable 10kV surge protection device meets a minimum Category C Low operation (per ANSI/IEEE C62.41.2).

STANDARD CONTROLS

The DSX0 LED area luminaire has a number of control options. DSX Size 0, comes standard with 0-10V dimming driver. Dusk to dawn controls can be utilized via optional NEMA twist-lock photocell receptacles. PIR integrated motion sensor with on-board photocell feature field-adjustable programming and are suitable for mounting heights up to 40 feet. Control option BL features a bi-level device that allows a second control circuit to switch all light engines to either 30% or 50% light output.

nLIGHT AIR CONTROLS

The DSX0 LED area luminaire is also available with nLight® AIR for the ultimate in wireless control. This powerful controls platform provides out-of-the-box basic motion sensing and photocontrol functionality and is suitable for mounting heights up to 40 feet. Once commissioned using a smartphone and the easy-to-use CLAIRITY app, nLight AIR equipped luminaires can be grouped, resulting in motion sensor and photocell group response without the need for additional equipment. Scheduled dimming with motion sensor over-ride can be achieved when used with the nLight Eclipse. Additional information about nLight Air can be found [here](#).

INSTALLATION

Integral mounting arm allows for fast mounting using Lithonia standard #8 drilling and accommodates pole drilling's from 2.41 to 3.12" on center. The standard "SPA" option for square poles and the "RPA" option for round poles use the #8 drilling. For #5 pole drillings, use SPA5 or RPA5. Additional mountings are available including a wall bracket (WBA) and mast arm (MA) option that allows luminaire attachment to a 2 3/8" horizontal mast arm.

LISTINGS

UL listed to meet U.S. and Canadian standards. UL Listed for wet locations. Light engines are IP66 rated; luminaire is IP66 rated. Rated for -40°C minimum ambient.

DesignLights Consortium® (DLC) Premium qualified product and DLC qualified product. Not all versions of this product may be DLC Premium qualified or DLC qualified. Please check the DLC Qualified Products List at www.designlights.org/QPL to confirm which versions are qualified.

International Dark-Sky Association (IDA) Fixture Seal of Approval (FSA) is available for all products on this page utilizing 3000K color temperature only.

GOVERNMENT PROCUREMENT

BAA – Buy America(n) Act: Product with the BAA option qualifies as a domestic end product under the Buy American Act as implemented in the FAR and DFARS. Product with the BAA option also qualifies as manufactured in the United States under DOT Buy America regulations.

BABA – Build America Buy America: Product with the BAA option also qualifies as produced in the United States under the definitions of the Build America, Buy America Act.

Please refer to www.acuitybrands.com/buy-american for additional information.

WARRANTY

5-year limited warranty. This is the only warranty provided and no other statements in this specification sheet create any warranty of any kind. All other express and implied warranties are disclaimed. Complete warranty terms located at: www.acuitybrands.com/support/warranty/terms-and-conditions

Note: Actual performance may differ as a result of end-user environment and application. All values are design or typical values, measured under laboratory conditions at 25 °C. Specifications subject to change without notice.