

SECTION No.(s): 861200000  
S.R. No.(s): 810  
Permit No: 2019-L-491-00007  
COUNTY: BROWARD

**DISTRICT FOUR (4) AMENDMENT NUMBER SEVEN (7) TO STATE OF FLORIDA  
DEPARTMENT OF TRANSPORTATION LANDSCAPE INCLUSIVE  
MEMORANDUM OF AGREEMENT**

**THIS AMENDMENT** Number Seven (7) to the Agreement dated May 27, 2009, made and entered into this 7<sup>th</sup> day of January 2020 by and between the State of Florida Department of Transportation hereinafter called the DEPARTMENT and the CITY OF COCONUT CREEK, a municipal subdivision of the State of Florida, hereinafter called the AGENCY.

**WITNESSETH**

**WHEREAS**, the parties entered into the Landscape Inclusive Maintenance Memorandum of Agreement dated, May 27, 2009 for the purpose of maintaining the landscape improvements by the AGENCY on various roads including State Road 810 (Hillsboro Boulevard); and,

**WHEREAS**, the DEPARTMENT and the AGENCY have agreed to add additional landscape to be installed on State Road 810 (Hillsboro Boulevard) in accordance with the above referenced Agreement; and,

**NOW THEREFORE**, for and in consideration of mutual benefits that flow each to the other, the parties covenant and agree as follows:

1. Pursuant to Page 7, Paragraph 8 of the Landscape Inclusive Maintenance Memorandum of Agreement for State Road 810 (Hillsboro Boulevard) dated May 27, 2009, the DEPARTMENT will allow the AGENCY to construct additional landscape improvements or to modify an improvement located as indicated in **Exhibit "A"**, State Road 810 (Hillsboro Boulevard) from M. P 1.254 to M.P. 1.338. In accordance with the plans attached as **Exhibit "B"**.
2. The AGENCY shall agree to maintain the additional landscape improvements in the Agreement described above in accordance with the Maintenance Plan, **Exhibit "C"** of the original agreement and,

**II. SPECIFIC PROJECT SITE MAINTENANCE REQUIREMENTS AND RECOMMENDATIONS**

*Basic maintenance for this area outside of the guidelines provided above, is to prune the groundcover to maintain a natural habit with full foliage, while trimming lateral branching as required to prevent foliage from growing beyond the limits of planting area onto the hardscape / pedestrian zones.*

Except as modified by this Amendment, all terms and conditions of the original Agreement and all Amendments thereto shall remain in full force and effect.

LIST OF EXHIBITS

- Exhibit A - Landscape Improvements Maintenance Boundaries Limits
- Exhibit B - Landscape Improvement Plans

In Witness whereof, the parties hereto have executed with this Amendment effective the 20<sup>th</sup> day January year written and approved.

CITY OF COCONUT CREEK

By: Karen M. Brooks  
Karen M. Brooks, City Manager

Attest: Leslie Wallace May (SEAL)  
Leslie Wallace May, City Clerk

Legal Review Date  
Terrill C. Pyburn 11/14/19  
Terrill C. Pyburn, City Attorney

STATE OF FLORIDA  
DEPARTMENT OF TRANSPORTATION

By: [Signature]  
Transportation Development Director  
Attest: [Signature] (SEAL)  
Executive Secretary

Legal Review Date  
[Signature] 1/3/2020  
Office of the General Counsel

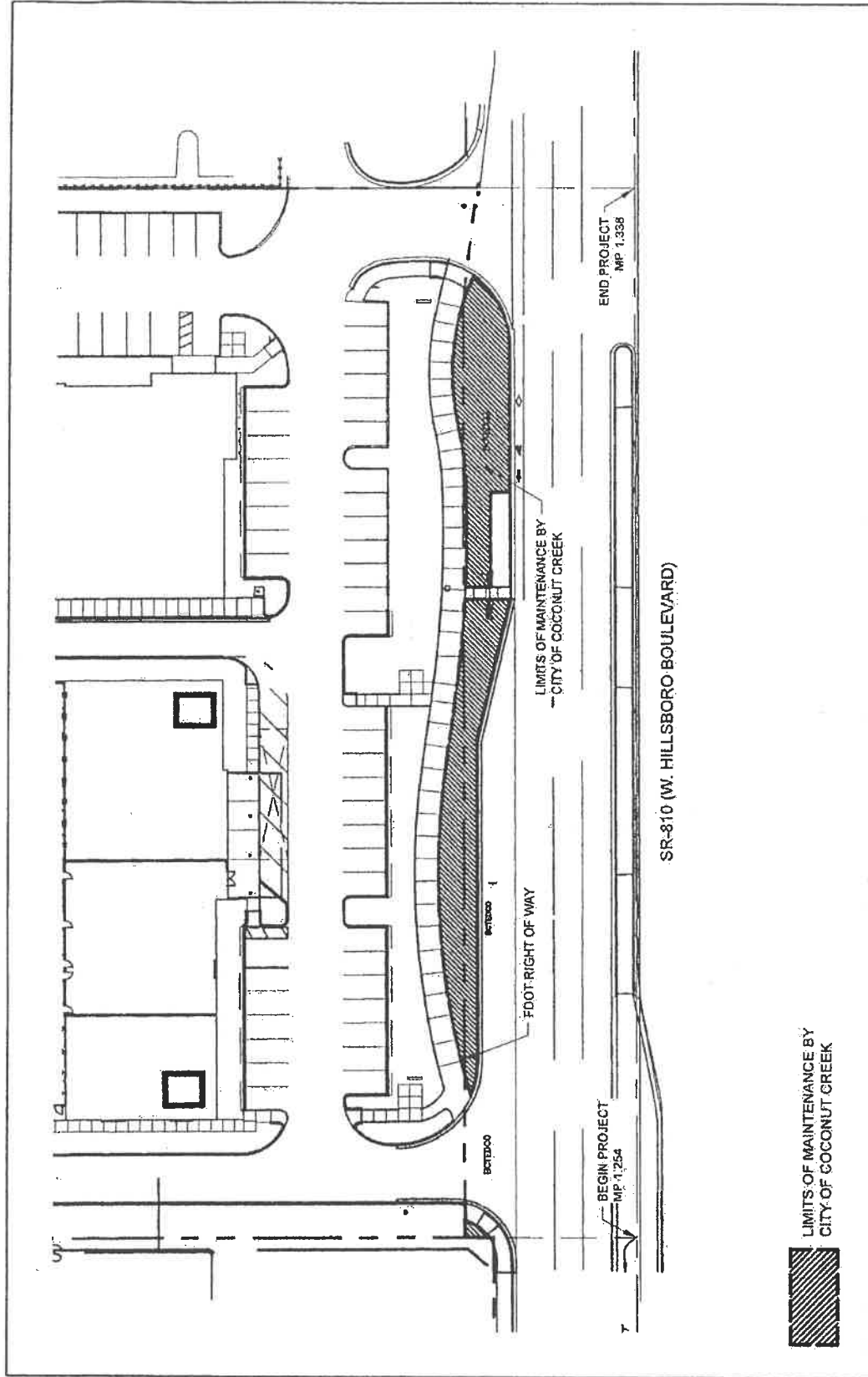
**SECTION No.(s):** 861200000  
**S.R. No.(s):** 810  
**Permit No:** 2019-L-491-00007  
**COUNTY:** BROWARD

**EXHIBIT A**  
**LANDSCAPE IMPROVEMENTS**  
**MAINTENANCE BOUNDARIES LIMITS**

- I. **LANDSCAPE PROJECT LIMITS FOR THIS PROJECT:**  
State Road 810 (Hillsboro Boulevard) from M. P 1.254 to M.P. 1.338
  
- II. **ORIGINAL INCLUSIVE LANDSCAPE MAINTENANCE AGREEMENT LIMITS FOR State Road 810 (Hillsboro Boulevard):**  
M.P. 0.000 (East of State Road 7) to M.P. 1.997 (East of State Road 91)
  
- III. **LANDSCAPE IMPROVEMENTS MAINTENANCE RESPONSIBILITIES MAP FOR THIS PROJECT:**



\*All other limits of the original agreement and amendments shall apply

*Please See Attached*



SR-810 (W. HILLSBORO BOULEVARD)

**LIMITS OF MAINTENANCE BY  
CITY OF COCONUT CREEK**

 <p>301 East Atlantic Boulevard Pompano Beach, FL 33060 Florida Certificate of Authorization # - 7928</p>	<p>DATE: 06/05/2019 SCALE: AS NOTED DRAWN BY: MP DESIGN BY: MP CHECKED BY: MP</p>	<p>GRAPHIC SCALE 0 10' 30' 60' 120' SCALE: 1"=60' NOTE: PRINTED DRAWING SIZE MAY HAVE CHANGED FROM ORIGINAL. VERIFY SCALE USING BAR SCALE ABOVE.</p> 	<p><b>LANDSCAPE IMPROVEMENT MAINTENANCE BOUNDARY MAP CITY OF COCONUT CREEK LM-001</b></p>
--	---	--	---

FDOT LANDSCAPE PERMIT NO. 2019-L-491-00007

**SECTION No.(s):** 861200000  
**S.R. No.(s):** 810  
**Permit No:** 2019-L-491-00007  
**COUNTY:** BROWARD

**EXHIBIT B**  
**LANDSCAPE IMPROVEMENT PLANS**

The AGENCY agrees to install the landscape improvements in accordance with the plans and specifications attached hereto and incorporated herein.

Please see attached plans prepared by:

Michael J. Phillips, RLA  
KEITH  
June 25, 2019

# PERMIT PLANS FOR LEDER HILLSBORO 4191 W. HILLSBORO BOULEVARD COCONUT CREEK, FL 33073



**FEMA FLOOD ZONE:**

THE PROPERTY IS LOCATED WITHIN FLOOD ZONES AE (1), X AND "02. PERCENT ANNUAL CHANCE FLOOD HAZARD" AS SHOWN ON F.I.R.M. No. 1201100158P1, BEARING A MAP EFFECTIVE DATE OF 08/19/2014.

RELATIONSHIP BETWEEN NAVD 1929 AND NAVD 1988			
ELEV. DIFFERENCE	DATUM	NAVD 1929	NAVD 1988
1.56'	+1.55 FEET	NAVD 1929	NAVD 1988
0.00'		NAVD 1988	NAVD 1988

ALL ELEVATIONS SHOWN ON THESE PLANS ARE BASED ON NAVD 1988 DATUM.

**LAND DESCRIPTION:**

ALL OF PARCEL "X", LEDER HILLSBORO COMPANY LIMITED - PART 27, ACCORDING TO THE PLAT THEREOF, AS RECORDED IN PLAT BOOK 186, PAGE 43, OF THE PUBLIC RECORDS OF BROWARD COUNTY, FLORIDA.

ALL OF TRACT "X", LEDER HILLSBORO COMPANY LIMITED - PART 15, ACCORDING TO THE PLAT THEREOF, AS RECORDED IN PLAT BOOK 125, PAGE 31, OF THE PUBLIC RECORDS OF BROWARD COUNTY, FLORIDA.

SAID LANDS LYING IN THE CITY OF COCONUT CREEK, BROWARD COUNTY, FLORIDA.



"IF THESE PLANS HAVE BEEN REPRODUCED OR COPIED, THIS MUST BE CONSIDERED AS OBTAINING SCALED DATA."



**LOCATION MAP**

SECTION 05, TOWNSHIP 48 S, RANGE 42 E  
FOLIO NUMBER 4842 05 24 0010

PREPARED FOR:  
THE LEDER GROUP  
4755 TECHNOLOGY WAY, SUITE 203  
BOCA RATON, FL 33431

Sheet Identification	Sheet Title
01-000	COVER
TD-01	TREE DISPOSITION PLAN
TD-100	TREE DISPOSITION LIST
LP-101	LANDSCAPE PLAN
LP-101A	FOOT CLEAR SIGHT LINE EXHIBIT
IR-101	IRRIGATION PLAN
IR-102	IRRIGATION DETAILS AND LEGEND

FIELD SPECIFICATIONS AND DESIGN STANDARDS INDICES:  
 • THE PUBLIC ROADWAY(S) INDICATED IN THESE PLANS HAVE BEEN DESIGNED IN ACCORDANCE WITH THE "MANUAL OF UNIFORM MINIMUM STANDARDS FOR DESIGN, CONSTRUCTION AND MAINTENANCE FOR STREETS & HIGHWAYS" OF FLORIDA.  
 • THE PERMITS FOR CONSTRUCTION OF THE PUBLIC ROADWAY(S) SHALL BE OBTAINED FROM THE CITY OF COCONUT CREEK, BROWARD COUNTY, FLORIDA.  
 • THE PERMITS FOR CONSTRUCTION OF THE PUBLIC ROADWAY(S) SHALL BE OBTAINED FROM THE CITY OF COCONUT CREEK, BROWARD COUNTY, FLORIDA.  
 • THE PERMITS FOR CONSTRUCTION OF THE PUBLIC ROADWAY(S) SHALL BE OBTAINED FROM THE CITY OF COCONUT CREEK, BROWARD COUNTY, FLORIDA.

PERMITTING AGENCIES	PERMIT NO.
CITY OF COCONUT CREEK ENGINEERING & UTILITIES	072020-17-4026P
FLORIDA DEPARTMENT OF HEALTH (BROWARD COUNTY)	WM62579
BROWARD COUNTY ENVIRONMENTAL PROTECTION (WASTE WATER)	L2017-220
BROWARD COUNTY ENVIRONMENTAL PROTECTION (STORM WATER)	00000-0879
SOUTH FLORIDA WATER MANAGEMENT DISTRICT	190514051
BROWARD COUNTY HIGHWAY CONSTRUCTION & ENGINEERING	2017-4-091-073
FOOT ACCESS	2017-0-091-071
FOOT DRAINAGE	2016-0-091-029
FOOT UTILITY	



PROJECT No. 09675.00 DATE: 05/21/2019









KEITH  
 101 East Adams, Birmingham  
 Professional Building  
 Birmingham, AL 35203  
 (205) 325-3300  
 Fax: (205) 325-3301  
 www.keithinc.com

Alabama State  
 2100 19th Avenue  
 Montgomery, AL 36106  
 (205) 261-1772  
 Fax: (205) 261-1773  
 www.alabama.gov

100 N. University Avenue, Suite 200  
 Lake Shore, Birmingham, AL 35208  
 (205) 325-3300  
 Fax: (205) 325-3301  
 www.keithinc.com

State of Florida, Certificate of  
 Landscape Architect - 7322  
 (205) 325-3300

NO.	DESCRIPTION	DATE
1	ISSUED FOR PERMIT	
2	ISSUED FOR PERMIT	
3	ISSUED FOR PERMIT	
4	ISSUED FOR PERMIT	
5	ISSUED FOR PERMIT	
6	ISSUED FOR PERMIT	
7	ISSUED FOR PERMIT	
8	ISSUED FOR PERMIT	
9	ISSUED FOR PERMIT	
10	ISSUED FOR PERMIT	
11	ISSUED FOR PERMIT	
12	ISSUED FOR PERMIT	
13	ISSUED FOR PERMIT	
14	ISSUED FOR PERMIT	
15	ISSUED FOR PERMIT	
16	ISSUED FOR PERMIT	
17	ISSUED FOR PERMIT	
18	ISSUED FOR PERMIT	
19	ISSUED FOR PERMIT	
20	ISSUED FOR PERMIT	
21	ISSUED FOR PERMIT	
22	ISSUED FOR PERMIT	
23	ISSUED FOR PERMIT	
24	ISSUED FOR PERMIT	
25	ISSUED FOR PERMIT	
26	ISSUED FOR PERMIT	
27	ISSUED FOR PERMIT	
28	ISSUED FOR PERMIT	
29	ISSUED FOR PERMIT	
30	ISSUED FOR PERMIT	
31	ISSUED FOR PERMIT	
32	ISSUED FOR PERMIT	
33	ISSUED FOR PERMIT	
34	ISSUED FOR PERMIT	
35	ISSUED FOR PERMIT	
36	ISSUED FOR PERMIT	
37	ISSUED FOR PERMIT	
38	ISSUED FOR PERMIT	
39	ISSUED FOR PERMIT	
40	ISSUED FOR PERMIT	
41	ISSUED FOR PERMIT	
42	ISSUED FOR PERMIT	
43	ISSUED FOR PERMIT	
44	ISSUED FOR PERMIT	
45	ISSUED FOR PERMIT	
46	ISSUED FOR PERMIT	
47	ISSUED FOR PERMIT	
48	ISSUED FOR PERMIT	
49	ISSUED FOR PERMIT	
50	ISSUED FOR PERMIT	

# LEDER HILLSBORO STORAGE

SCALE: AS NOTED  
 DATE LISTED: MAY 11, 2019  
 DRAWN BY: [Name]  
 CHECKED BY: [Name]  
 PROJECT NO: [Number]

SHEET TITLE:  
 LANDSCAPE PLAN

SHEET NUMBER:  
 LP-101

PROJECT NO: 06675-00

PLANT LIST

NO.	QUANTITY	PLANT NAME AND SPECIFICATION
1	10	10' PALM TREE
2	15	5' PALM TREE
3	20	4' PALM TREE
4	30	3' PALM TREE
5	40	2' PALM TREE
6	50	1' PALM TREE
7	60	10' SPREADER
8	70	5' SPREADER
9	80	4' SPREADER
10	90	3' SPREADER
11	100	2' SPREADER
12	110	1' SPREADER
13	120	10' PALM TREE
14	130	5' PALM TREE
15	140	4' PALM TREE
16	150	3' PALM TREE
17	160	2' PALM TREE
18	170	1' PALM TREE
19	180	10' SPREADER
20	190	5' SPREADER
21	200	4' SPREADER
22	210	3' SPREADER
23	220	2' SPREADER
24	230	1' SPREADER
25	240	10' PALM TREE
26	250	5' PALM TREE
27	260	4' PALM TREE
28	270	3' PALM TREE
29	280	2' PALM TREE
30	290	1' PALM TREE
31	300	10' SPREADER
32	310	5' SPREADER
33	320	4' SPREADER
34	330	3' SPREADER
35	340	2' SPREADER
36	350	1' SPREADER
37	360	10' PALM TREE
38	370	5' PALM TREE
39	380	4' PALM TREE
40	390	3' PALM TREE
41	400	2' PALM TREE
42	410	1' PALM TREE
43	420	10' SPREADER
44	430	5' SPREADER
45	440	4' SPREADER
46	450	3' SPREADER
47	460	2' SPREADER
48	470	1' SPREADER
49	480	10' PALM TREE
50	490	5' PALM TREE
51	500	4' PALM TREE
52	510	3' PALM TREE
53	520	2' PALM TREE
54	530	1' PALM TREE
55	540	10' SPREADER
56	550	5' SPREADER
57	560	4' SPREADER
58	570	3' SPREADER
59	580	2' SPREADER
60	590	1' SPREADER
61	600	10' PALM TREE
62	610	5' PALM TREE
63	620	4' PALM TREE
64	630	3' PALM TREE
65	640	2' PALM TREE
66	650	1' PALM TREE
67	660	10' SPREADER
68	670	5' SPREADER
69	680	4' SPREADER
70	690	3' SPREADER
71	700	2' SPREADER
72	710	1' SPREADER
73	720	10' PALM TREE
74	730	5' PALM TREE
75	740	4' PALM TREE
76	750	3' PALM TREE
77	760	2' PALM TREE
78	770	1' PALM TREE
79	780	10' SPREADER
80	790	5' SPREADER
81	800	4' SPREADER
82	810	3' SPREADER
83	820	2' SPREADER
84	830	1' SPREADER
85	840	10' PALM TREE
86	850	5' PALM TREE
87	860	4' PALM TREE
88	870	3' PALM TREE
89	880	2' PALM TREE
90	890	1' PALM TREE
91	900	10' SPREADER
92	910	5' SPREADER
93	920	4' SPREADER
94	930	3' SPREADER
95	940	2' SPREADER
96	950	1' SPREADER
97	960	10' PALM TREE
98	970	5' PALM TREE
99	980	4' PALM TREE
100	990	3' PALM TREE
101	1000	2' PALM TREE
102	1010	1' PALM TREE
103	1020	10' SPREADER
104	1030	5' SPREADER
105	1040	4' SPREADER
106	1050	3' SPREADER
107	1060	2' SPREADER
108	1070	1' SPREADER
109	1080	10' PALM TREE
110	1090	5' PALM TREE
111	1100	4' PALM TREE
112	1110	3' PALM TREE
113	1120	2' PALM TREE
114	1130	1' PALM TREE
115	1140	10' SPREADER
116	1150	5' SPREADER
117	1160	4' SPREADER
118	1170	3' SPREADER
119	1180	2' SPREADER
120	1190	1' SPREADER
121	1200	10' PALM TREE
122	1210	5' PALM TREE
123	1220	4' PALM TREE
124	1230	3' PALM TREE
125	1240	2' PALM TREE
126	1250	1' PALM TREE
127	1260	10' SPREADER
128	1270	5' SPREADER
129	1280	4' SPREADER
130	1290	3' SPREADER
131	1300	2' SPREADER
132	1310	1' SPREADER
133	1320	10' PALM TREE
134	1330	5' PALM TREE
135	1340	4' PALM TREE
136	1350	3' PALM TREE
137	1360	2' PALM TREE
138	1370	1' PALM TREE
139	1380	10' SPREADER
140	1390	5' SPREADER
141	1400	4' SPREADER
142	1410	3' SPREADER
143	1420	2' SPREADER
144	1430	1' SPREADER
145	1440	10' PALM TREE
146	1450	5' PALM TREE
147	1460	4' PALM TREE
148	1470	3' PALM TREE
149	1480	2' PALM TREE
150	1490	1' PALM TREE
151	1500	10' SPREADER
152	1510	5' SPREADER
153	1520	4' SPREADER
154	1530	3' SPREADER
155	1540	2' SPREADER
156	1550	1' SPREADER
157	1560	10' PALM TREE
158	1570	5' PALM TREE
159	1580	4' PALM TREE
160	1590	3' PALM TREE
161	1600	2' PALM TREE
162	1610	1' PALM TREE
163	1620	10' SPREADER
164	1630	5' SPREADER
165	1640	4' SPREADER
166	1650	3' SPREADER
167	1660	2' SPREADER
168	1670	1' SPREADER
169	1680	10' PALM TREE
170	1690	5' PALM TREE
171	1700	4' PALM TREE
172	1710	3' PALM TREE
173	1720	2' PALM TREE
174	1730	1' PALM TREE
175	1740	10' SPREADER
176	1750	5' SPREADER
177	1760	4' SPREADER
178	1770	3' SPREADER
179	1780	2' SPREADER
180	1790	1' SPREADER
181	1800	10' PALM TREE
182	1810	5' PALM TREE
183	1820	4' PALM TREE
184	1830	3' PALM TREE
185	1840	2' PALM TREE
186	1850	1' PALM TREE
187	1860	10' SPREADER
188	1870	5' SPREADER
189	1880	4' SPREADER
190	1890	3' SPREADER
191	1900	2' SPREADER
192	1910	1' SPREADER
193	1920	10' PALM TREE
194	1930	5' PALM TREE
195	1940	4' PALM TREE
196	1950	3' PALM TREE
197	1960	2' PALM TREE
198	1970	1' PALM TREE
199	1980	10' SPREADER
200	1990	5' SPREADER
201	2000	4' SPREADER
202	2010	3' SPREADER
203	2020	2' SPREADER
204	2030	1' SPREADER
205	2040	10' PALM TREE
206	2050	5' PALM TREE
207	2060	4' PALM TREE
208	2070	3' PALM TREE
209	2080	2' PALM TREE
210	2090	1' PALM TREE
211	2100	10' SPREADER
212	2110	5' SPREADER
213	2120	4' SPREADER
214	2130	3' SPREADER
215	2140	2' SPREADER
216	2150	1' SPREADER
217	2160	10' PALM TREE
218	2170	5' PALM TREE
219	2180	4' PALM TREE
220	2190	3' PALM TREE
221	2200	2' PALM TREE
222	2210	1' PALM TREE
223	2220	10' SPREADER
224	2230	5' SPREADER
225	2240	4' SPREADER
226	2250	3' SPREADER
227	2260	2' SPREADER
228	2270	1' SPREADER
229	2280	10' PALM TREE
230	2290	5' PALM TREE
231	2300	4' PALM TREE
232	2310	3' PALM TREE
233	2320	2' PALM TREE
234	2330	1' PALM TREE
235	2340	10' SPREADER
236	2350	5' SPREADER
237	2360	4' SPREADER
238	2370	3' SPREADER
239	2380	2' SPREADER
240	2390	1' SPREADER
241	2400	10' PALM TREE
242	2410	5' PALM TREE
243	2420	4' PALM TREE
244	2430	3' PALM TREE
245	2440	2' PALM TREE
246	2450	1' PALM TREE
247	2460	10' SPREADER
248	2470	5' SPREADER
249	2480	4' SPREADER
250	2490	3' SPREADER
251	2500	2' SPREADER
252	2510	1' SPREADER
253	2520	10' PALM TREE
254	2530	5' PALM TREE
255	2540	4' PALM TREE
256	2550	3' PALM TREE
257	2560	2' PALM TREE
258	2570	1' PALM TREE
259	2580	10' SPREADER
260	2590	5' SPREADER
261	2600	4' SPREADER
262	2610	3' SPREADER
263	2620	2' SPREADER
264	2630	1' SPREADER
265	2640	10' PALM TREE
266	2650	5' PALM TREE
267	2660	4' PALM TREE
268	2670	3' PALM TREE
269	2680	2' PALM TREE
270	2690	1' PALM TREE
271	2700	10' SPREADER
272	2710	5' SPREADER
273	2720	4' SPREADER
274		







Corporate Office  
301 W. 1st Street  
Pompano Beach, Florida 33062-6641  
(954) 786-3500

Branch Office  
1000 N.W. 10th Street  
Boca Raton, Florida 33431

Branch Office  
120 N. W. 10th Street  
Lakewood, Florida 33410

Branch Office  
1000 N.W. 10th Street  
Lakewood, Florida 33410

Branch Office  
1000 N.W. 10th Street  
Lakewood, Florida 33410

Branch Office  
1000 N.W. 10th Street  
Lakewood, Florida 33410

Branch Office  
1000 N.W. 10th Street  
Lakewood, Florida 33410

Branch Office  
1000 N.W. 10th Street  
Lakewood, Florida 33410

Branch Office  
1000 N.W. 10th Street  
Lakewood, Florida 33410

Branch Office  
1000 N.W. 10th Street  
Lakewood, Florida 33410

Branch Office  
1000 N.W. 10th Street  
Lakewood, Florida 33410

Branch Office  
1000 N.W. 10th Street  
Lakewood, Florida 33410

Branch Office  
1000 N.W. 10th Street  
Lakewood, Florida 33410

Branch Office  
1000 N.W. 10th Street  
Lakewood, Florida 33410

Branch Office  
1000 N.W. 10th Street  
Lakewood, Florida 33410

Branch Office  
1000 N.W. 10th Street  
Lakewood, Florida 33410

Branch Office  
1000 N.W. 10th Street  
Lakewood, Florida 33410

Branch Office  
1000 N.W. 10th Street  
Lakewood, Florida 33410

Branch Office  
1000 N.W. 10th Street  
Lakewood, Florida 33410

Branch Office  
1000 N.W. 10th Street  
Lakewood, Florida 33410

Branch Office  
1000 N.W. 10th Street  
Lakewood, Florida 33410

Branch Office  
1000 N.W. 10th Street  
Lakewood, Florida 33410

Branch Office  
1000 N.W. 10th Street  
Lakewood, Florida 33410

Branch Office  
1000 N.W. 10th Street  
Lakewood, Florida 33410

Branch Office  
1000 N.W. 10th Street  
Lakewood, Florida 33410

Branch Office  
1000 N.W. 10th Street  
Lakewood, Florida 33410

Branch Office  
1000 N.W. 10th Street  
Lakewood, Florida 33410

Branch Office  
1000 N.W. 10th Street  
Lakewood, Florida 33410

# LEDER HILLSBORO STORAGE

SCALE: AS SHOWN  
DATE ISSUED: MAY 21, 2014  
DRAWN BY: JRP  
CHECKED BY: JRP

NOTE: CONSULTING ENGINEER SHALL BE RESPONSIBLE FOR ANY TYPE OF ELEVATION WORK.



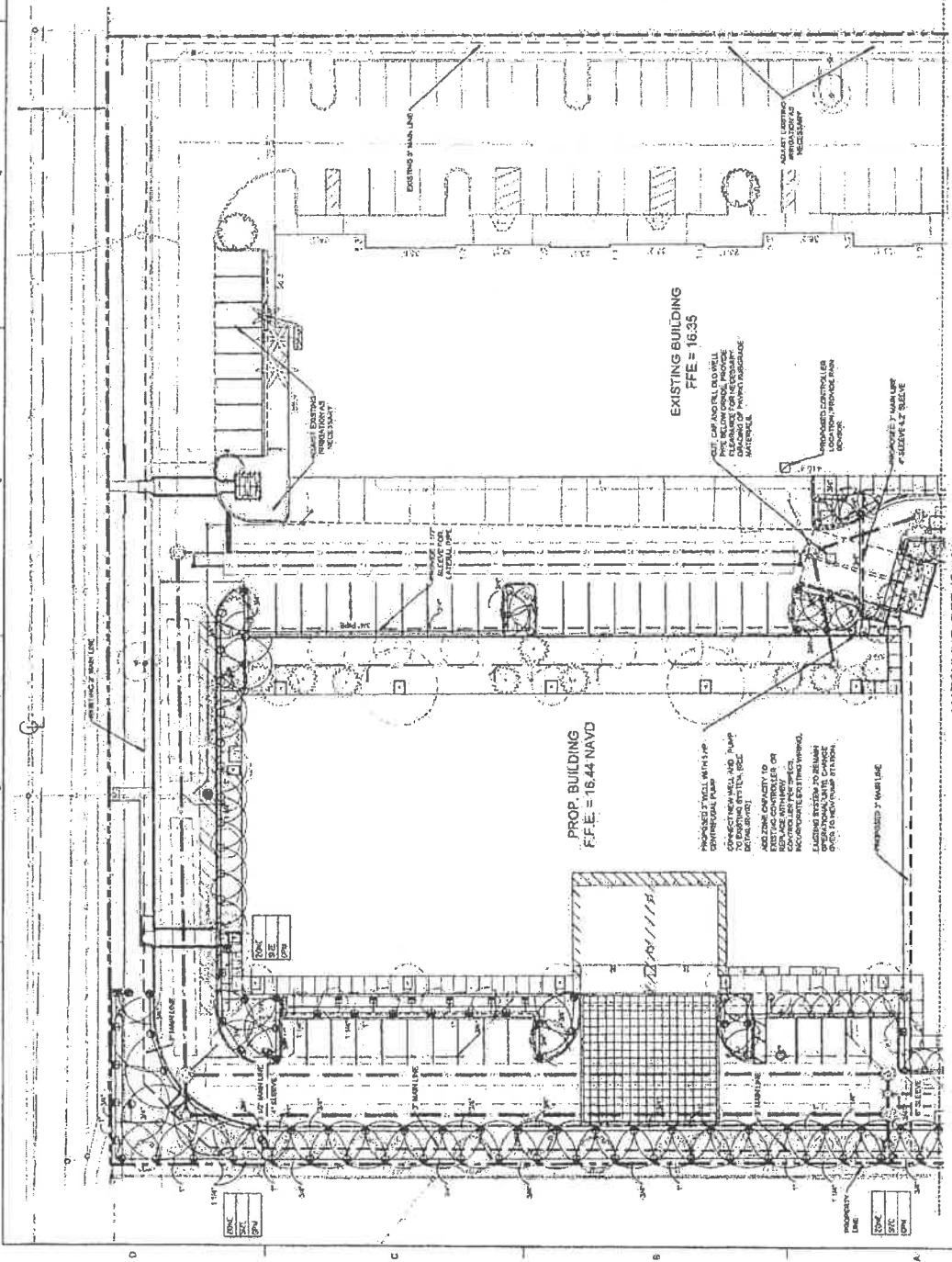
NORTH  
GRAPHIC SCALE  
0 20 40

SCALE: 1"=20'  
NOTE: DIMENSIONS AND ELEVATIONS MAY HAVE CHANGED FROM ORIGINAL SCALE USING DAT SCALE ABOVE.

SHEET NUMBER  
IR-102

PROJECT NUMBER  
09675.00

FOOTLANDSCAPE PERMIT NO. 2013-1491-00007



- FOOT IRRIGATION NOTES:**
1. THE IRRIGATION SYSTEM SHALL BE THE LOWEST AVAILABLE TO THE IRRIGATION SYSTEM. THE IRRIGATION SYSTEM SHALL BE THE LOWEST AVAILABLE TO THE IRRIGATION SYSTEM.
  2. THE IRRIGATION SYSTEM SHALL BE THE LOWEST AVAILABLE TO THE IRRIGATION SYSTEM. THE IRRIGATION SYSTEM SHALL BE THE LOWEST AVAILABLE TO THE IRRIGATION SYSTEM.
  3. THE IRRIGATION SYSTEM SHALL BE THE LOWEST AVAILABLE TO THE IRRIGATION SYSTEM. THE IRRIGATION SYSTEM SHALL BE THE LOWEST AVAILABLE TO THE IRRIGATION SYSTEM.

NOTE: CONSULTING ENGINEER SHALL BE RESPONSIBLE FOR ANY TYPE OF ELEVATION WORK.

MATCHLINE: REF. IR-101

