



Carnahan, Proctor and Cross, Inc.
814 S. Military Trail
Deerfield Beach, Florida 33442
Phone: 954.972.3959
Fax: 954.972.4178
www.carnahan-proctor.com

Amendment No. NA

Proposal No:

Project Name: Hillsboro Blvd. Re-development

**To: Linda Whitman
4800 West Copans Road
Coconut Creek, FL 33063
LWhitman@coconutcreek.net**

- Fixed Fee
- Time & Expenses
- Maximum Upset Fee
- Other

Estimated Date of Completion: See schedule below

Scope of Services:

See attached.

Prepared By: Freddie A. Vargas, P.E., Traffic/Transportation Manager

Please execute this Client Authorization for Carnahan Proctor and Cross, Inc. to proceed with the above scope of services at the stated estimated costs. No services will be provided until it is signed and returned to CPC.

Subject to Master Agreement with City
RFQ No. 11-19-14-10
Contract Extension No 2 – February, 2019
Carnahan Proctor and Cross, Inc. Authorization

Subject to terms & conditions in our Master Agreement with City dated

Client Authorization (Please sign original and return)

By **Freddie A. Vargas, P.E.**

By:

Title: **Traffic /Transportation Manager**

Title:

Date: **January 3, 2020**

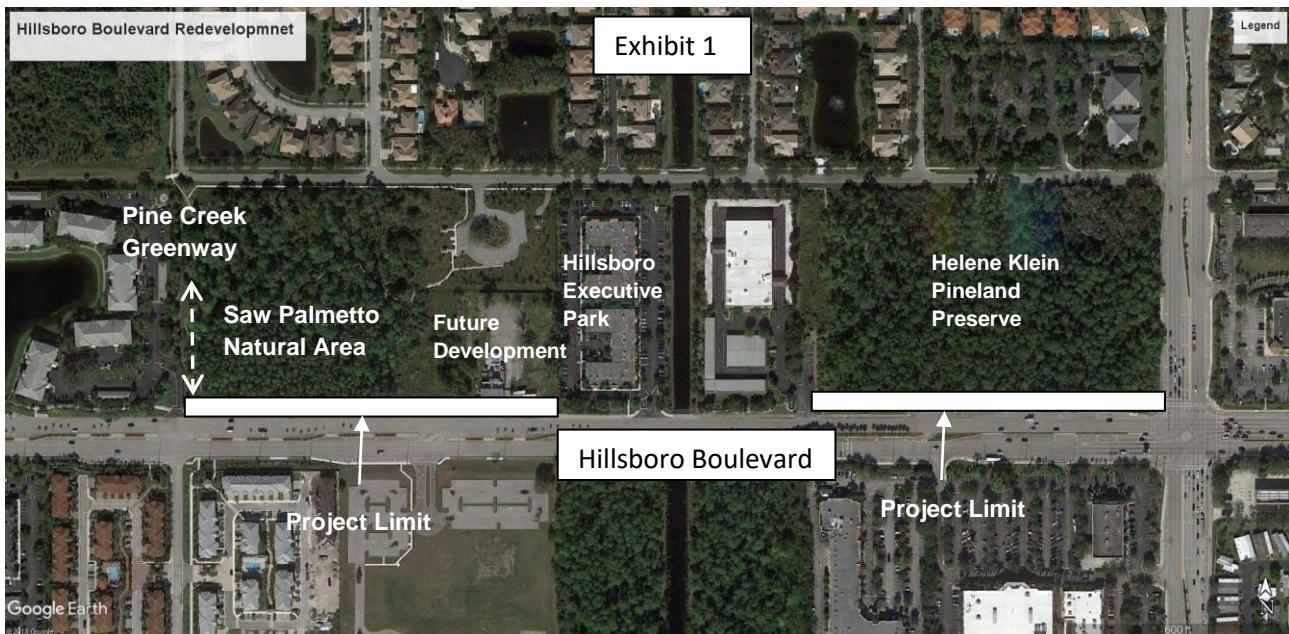
Date:

Exhibit-1

Proposal for City of Coconut Creek Hillsboro Blvd. Re-development

1.0 PROJECT DESCRIPTION

The City of Coconut Creek obtained funds for the acquisition of 0.81 acre site along Hillsboro Boulevard to be combined with the adjacent parcel to the east providing more viable redevelopment parcel. Together with the acquisition of the aforementioned parcel the City is planning to develop a linear park and share pathway concept along the north side of Hillsboro Boulevard as shown below.



2.0 BASIS OF SCOPE

- This scope is based upon coordination between Carnahan, Proctor and Cross, Inc. (CPC) and representatives of the City of Coconut Creek (City). Should the scope of services deviate from the information provided by the City, CPC may revise the scope and fee provided herein.
- The reviewing agencies are The City, Broward County Engineering, Broward County Traffic Engineering, Broward County Transit, Broward County Parks and Recreation Department, and the Florida Department of Transportation (FDOT).



3.0 SCOPE OF BASIC SERVICES AND FEE

Phase I **Surveying**

- ✓ Prepare a Specific Purpose Survey (SPS) for Topographic info along Hillsboro Blvd North side according to Exhibit 1 project limits
- ✓ The “Area” will be from West bound right lane (including right-turn lane) North to 10’ feet into parks, property etc... at an extreme distance
- ✓ Above and underground ground locations (based on utilities company provided information? of utilities in the Area, along with any inverts or “maintenance hole” elevation info, If accessible
- ✓ A Tree survey will be completed inside the Area, with tree’s larger than 3” diameter located within Heleen Klien/Park including
- ✓ Vertical Datum will be NAVD-88
- ✓ Topographic information on Hillsboro Boulevard within the existing westbound right turn lane west of Lyons Road
- ✓ Legal description(s) for bus shelter(s) easement or shared use pathway that encroach outside of the Hillsboro Boulevard ROW.

Phase II **Concept Plans**

- CPC will develop concept plans incorporating the following elements:
 - ✓ 8’ to 10’ concrete multiuse path alignment
 - ✓ Identify landscaping areas
 - ✓ Evaluation of the roadway’s drainage conditions and design based on proposed impervious surface are according to FDOT criteria
 - ✓ Identify bus stop location in coordination with Broward County Transit
 - ✓ Identify Art Site for future art piece.
 - ✓ Preliminary hardscape concepts

Phase III **Final Plans**

- CPC will develop construction plans from the approved concept plans from Phase II. The plans will include:
 - ✓ Typical sections as needed
 - ✓ Cross section as required
 - ✓ Drainage improvement plans details
 - ✓ Existing utilities and utilities adjustments as required by the project
 - ✓ Final lighting conduit and lighting features including voltage drop calculations and power source location and details
 - ✓ Final Landscaping and Irrigation Plans including tree disposition plans (if needed)
 - ✓ Hardscape design details
 - ✓ Location for public arts material
 - ✓ Details for Bus stop location
 - ✓ Details for utilities improvements



- ✓ Landscaping plans

Project Coordination

CPC will coordinate with Broward County Engineering Department, Broward County Transit, Broward County Parks and Recreation and FDOT to incorporate comments or recommendations obtained from the final plans permitting and approval process.

Public involvement and presentations

CPC will develop public information material including graphical representation of the conceptual and or final plans to be presented by City staff to City officials and or the effected stakeholders.

Deliverables

CPC will deliver Construction Plans according to the scope in a PDF 11” X 17” format including pay items quantities and cost estimate.

Total Fee:

4.0 SCHEDULE

- Surveying: 3 weeks after NTP
- Draft Concept Plans: 3 weeks after surveying plans
- 60% plans submittal to City for comments: 4 weeks after approved concept plans
- 100% submittal to Broward County, FDOT & City: 2 weeks after 60% plans approval
- Expected completion date March 15, 2020


Not included in Proposal

- Permits fees or plans review fees required by government agencies
- Land acquisition survey
- A typical bus rider shelter detail will be provided by the City

Professional Engineering Services Summary	
Project Management	\$7,735
Surveying	\$15,400
Concept plans and lighting concept plans	\$10,105
Design	\$26,030
Landscaping	\$9,970
Graphics	\$3,620
	\$72,860

End of Scope of Services



 CPC 814 S Military Trail Deerfield Beach, FL 33442	Hillsboro Blvd. Re-development								LABOR		TASK COSTS	
	Contract Rates								TOTAL TASK MAN-HOURS	LABOR COST PER TASK		
	\$200.00	\$150.00	\$140.00	\$115.00	\$120.00	\$130.00	\$125.00	\$135.00				
	Number of Man-hours											
Project Principal	Lead Engineer / Project Manager	Senior Engineer	Engineer	Designer	Landscape Architect	Survey Crew (2-people)	Land Surveyor					
ACTIVITY DESCRIPTION												
Hillsboro Blvd. Re-development												
Project Management												
Kick Off Meeting	0	2	0	1	0	0	0.0	0.0	3	\$415	\$415	
Project Management & Team meetings	0	16		16	0	0	0.0	0.0	32	\$4,240	\$4,240	
Coordination with FDOT/FPL/ Broward County Entities	0	8	0	8	8	0	0	0	24	\$3,080	\$3,080	
											\$7,735	
Phase I Surveying												
Key Sheet		0.5	1.0	0.0	1.0	0.0	0	1	4	\$470	\$470	
Topographic and utilities, vertical datum, legal description & mapping		0.5	1.0	0.0	4.0		30.0	24.0	60	\$7,685	\$7,685	
CAD / office work			4.0		16.0			4.0		\$3,020	\$3,020	
Tree Survey		0.5	1.0	0.0	2.0	20		1.0	25	\$3,190	\$3,190	
QA/QC	2.0	0.5	4						7	\$1,035	\$1,035	
											\$15,400	
Concept Plans												
Key Sheet	0.0	0.5	1.0	4.0	0.0	0.0	0	0	6	\$675	\$675	
Plan Sheets (6)		1.5	1.0	24.0	4.0		0.0	0.0	31	\$3,605	\$3,605	
Concept Plans Graphics		0.5	1.0	8.0			0.0	0.0	10	\$1,135	\$1,135	
QA/QC	1	0.5	1						3	\$415	\$415	
											\$5,830	
Conceptual Pedestrian Lighting												
Lighting Analysis		1.0	1	4					6	\$750	\$750	
Lighting Plans Concept (6 sheets)		1.0		16	2				19	\$2,230	\$2,250	
QA/QC		2	1	2					5	\$670	\$670	
Details/Notes Sheet (1)		0.5	0.5	4.0			0.0	0.0	5	\$605	\$605	
											\$4,275	
Final Plans												
Typical Section & Cross sections		1.0	6	16					23	\$2,830	\$2,830	
Drainage Design and details		2.0	4	16					22	\$2,700	\$2,700	
Utilities and utility conflict and resolution		2	4	8					14	\$1,780	\$1,780	
Lighting Design		2.0	4.0	18.0	6.0		0.0	0.0	30	\$3,650	\$3,650	
Landscaping Design		2.0	0.0	2.0		28.0	0.0	0.0	32	\$4,170	\$4,170	
Irrigation System Design		1.0	0.0	1.0		24.0	0.0	0.0	26	\$3,385	\$3,385	
Tree Disposition and Identification		0.5				18.0				\$2,415	\$2,415	
Hardscape Design		0.5	2.0	24.0	8.0	2.0	0.0	0.0	37	\$4,335	\$4,335	
Transit improvements		0.5	0.5	1.0	4.0		0.0	0.0	6	\$740	\$740	
Details/Notes Sheet (3)		0.5	2.0	6.0	12.0		0.0	0.0	21	\$2,485	\$2,485	
Plans submittals and response to comments (60% & 100%)		6.0	8.0	16.0	8.0	8.0		4.0	50	\$6,400	\$6,400	
QA/QC	2.0	1.0	4.0						7	\$1,110	\$1,110	
Geotechnical*											\$36,000	
Presentations and PI Support												
Development of graphics		2.0	4	24					30	\$3,620	\$3,620	
											\$3,620	
TOTALS	5	57	56	219	75	100	30	34	533		\$72,860.00	
* Geotechnical fee is a reimbursable cost and it is an estimate based on scope and will require City authorization at the time of the services.											\$6,000.00	