

SECTION No.(s): 86100000
S.R. No.(s): 7
FM No: 444935-1-74-01
COUNTY: BROWARD

**DISTRICT FOUR (4) AMENDMENT NUMBER SIX (6) TO STATE OF FLORIDA
DEPARTMENT OF TRANSPORTATION LANDSCAPE INCLUSIVE
MEMORANDUM OF AGREEMENT**

THIS AMENDMENT Number Six (6) to the Agreement dated May 27, 2009, made and entered into this 21st day of June 2019 by and between the State of Florida Department of Transportation hereinafter called the DEPARTMENT and the CITY OF COCONUT CREEK, a municipal subdivision of the State of Florida, hereinafter called the AGENCY.

WITNESSETH

WHEREAS, the parties entered into the Landscape Inclusive Maintenance Memorandum of Agreement dated, May 27, 2009 for the purpose of maintaining the landscape improvements by the AGENCY on various roads including State Road 7 (US 441); and,

WHEREAS, the DEPARTMENT and the AGENCY have agreed to add additional landscape to be installed on State Road 7 (US 441) in accordance with the above referenced Agreement; and,

NOW THEREFORE, for and in consideration of mutual benefits that flow each to the other, the parties covenant and agree as follows:

1. Pursuant to paragraph 7 of the Landscape Inclusive Maintenance Memorandum of Agreement for State Road 7 (US 441) dated May 27, 2009, the DEPARTMENT will allow the AGENCY to construct additional landscape improvements or to modify an improvement located as indicated in **Exhibit "A"**, State Road 7 (US 441 from Cullum Road (M.P. 21.411) to Eastbound State Road 869 (Sawgrass Expressway) On Ramp (M.P. 22.531). In accordance with the plans attached as **Exhibit "B"**.
2. The AGENCY shall agree to maintain the additional landscape improvements in the Agreement described above according to the **Exhibit "C"** Maintenance Plan, attached to this Amendment.
3. The DEPARTMENT and the AGENCY intend to enter into a separate agreement as further referenced in **Exhibit "D"** attached hereto and made a part hereof. The DEPARTMENT shall be invited to assist the AGENCY in final inspections before acceptance of the Project by the AGENCY. The DEPARTMENT must approve the landscape improvements before the Agency's contactor is released.

4. The AGENCY has represented that it has or will enter into an Interlocal Agreement with the City of Coral Springs providing for the design and construction of landscape improvements and sharing costs of maintenance to the medians on State Road 7 (US 441).
5. Pursuant to Exhibit "A" of the Landscape Inclusive Maintenance Memorandum of Agreement for State Road 7 (US 441) dated May 27, 2009, the DEPARTMENT and the AGENCY agree to modify the limits of maintenance listed on State Road 7 (US 441 from Cullum Road (M.P. 21.411) to Eastbound State Road 869 (Sawgrass Expressway) On Ramp (M.P. 22.531).

Except as modified by this Amendment, all terms and conditions of the original Agreement and all Amendments thereto shall remain in full force and effect.

LIST OF EXHIBITS

- Exhibit A - Landscape Improvements Maintenance Boundaries Limits
- Exhibit B - Landscape Improvement Plans
- Exhibit C - Landscape Improvements Maintenance Plan
- Exhibit D - Approximate Cost For Landscape Improvements

In Witness whereof, the parties hereto have executed with this Amendment effective the 21st day June year written and approved.

CITY OF COCONUT CREEK

By: Mary C. Blasi
Chairperson/Mayor/Manager

Attest: Lexie Wallace May (SEAL)
Clerk

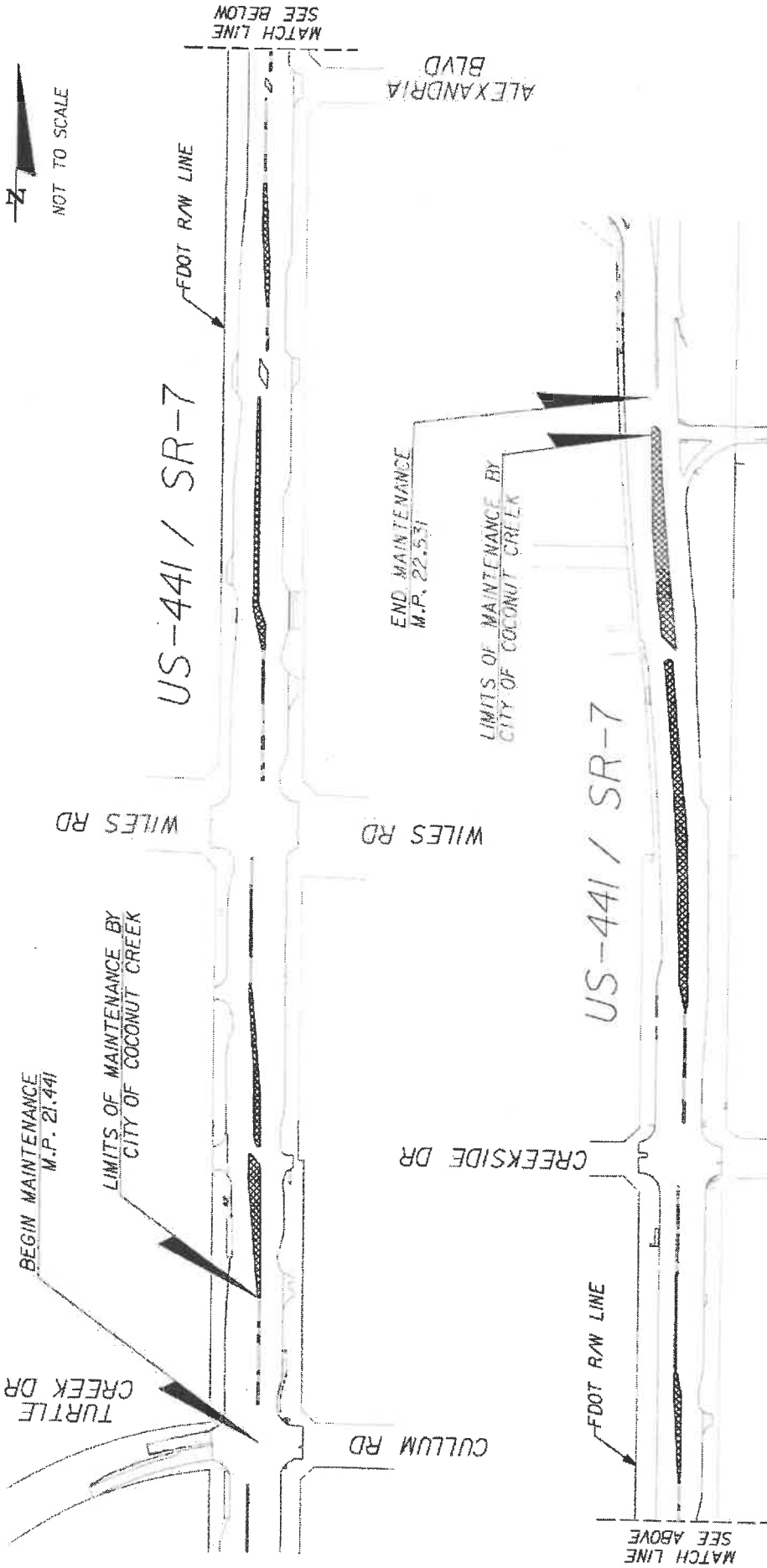
Legal Review Kathleen McLaughlin Date 6/12/18

STATE OF FLORIDA
DEPARTMENT OF TRANSPORTATION

Attest: [Signature] (SEAL)
Executive Secretary

Legal Review [Signature] Date 6/20/2019
Office of the General Counsel

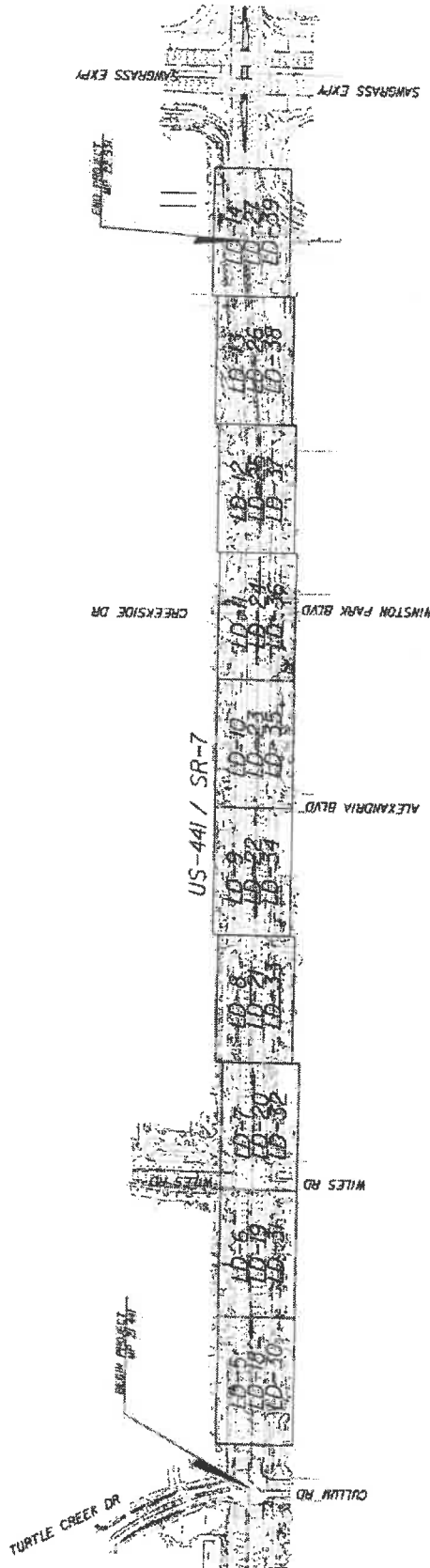
By: [Signature]
Transportation Development Director



LANDSCAPE IMPROVEMENT MAINTENANCE BOUNDARY MAP

CITY OF COCONUT CREEK
MAY 13, 2019
FM# 444935-1-74-01

LIMITS OF MAINTENANCE BY CITY OF COCONUT CREEK



REVISIONS				KS KEITH & SO NARS A DIVISION OF KCI		STATE OF FLORIDA DEPARTMENT OF TRANSPORTATION FINANCIAL PROJECT ID COCONUT CREEK 444935-1-75-01		SHEET LAYOUT SHEET NO. LD-3	
				ROAD NO. 7		CITY OF COCONUT CREEK		4/2/09 02/08 JM 2:14 PM	

DISPOSITION CHART

NO.	SCIENTIFIC NAME	COMMON NAME	DBH INCH	SPREAD FOOT	HEIGHT FOOT	CONDITION	DISPOSITION	SHEET NO.
46	ORONCHUS VITIFOLIATA	LIVE OAK	4	14	20	FAIR	REMOVE	10 - 13
47	ORONCHUS VITIFOLIATA	LIVE OAK	6.5	23	26	GOOD	REMOVE	10 - 13
48	ORONCHUS VITIFOLIATA	LIVE OAK	4.5	8	18	OK-AD	REMOVE	10 - 13
49	ORONCHUS VITIFOLIATA	LIVE OAK	8	20	22	GOOD	REMOVE	10 - 13
50	ORONCHUS VITIFOLIATA	LIVE OAK	5.5	14	14	POOR	REMOVE	10 - 13
51	ORONCHUS VITIFOLIATA	LIVE OAK	8	10	18	GOOD	REMOVE	10 - 13
52	ORONCHUS VITIFOLIATA	LIVE OAK	8	18	19	GOOD	REMOVE	10 - 13
53	ORONCHUS VITIFOLIATA	LIVE OAK	8	18	24	GOOD	REMOVE	10 - 13
54	ORONCHUS VITIFOLIATA	LIVE OAK	10	18	26	GOOD	REMOVE	10 - 13
55	ORONCHUS VITIFOLIATA	LIVE OAK	10	18	26	GOOD	REMOVE	10 - 13
56	ORONCHUS VITIFOLIATA	LIVE OAK	10	18	26	GOOD	REMOVE	10 - 13
57	ORONCHUS VITIFOLIATA	LIVE OAK	10	18	26	GOOD	REMOVE	10 - 13
58	ORONCHUS VITIFOLIATA	LIVE OAK	10	18	26	GOOD	REMOVE	10 - 13
59	ORONCHUS VITIFOLIATA	LIVE OAK	10	18	26	GOOD	REMOVE	10 - 13
60	ORONCHUS VITIFOLIATA	LIVE OAK	10	18	26	GOOD	REMOVE	10 - 13
61	ORONCHUS VITIFOLIATA	LIVE OAK	10	18	26	GOOD	REMOVE	10 - 13
62	ORONCHUS VITIFOLIATA	LIVE OAK	10	18	26	GOOD	REMOVE	10 - 13
63	ORONCHUS VITIFOLIATA	LIVE OAK	10	18	26	GOOD	REMOVE	10 - 13
64	ORONCHUS VITIFOLIATA	LIVE OAK	10	18	26	GOOD	REMOVE	10 - 13
65	ORONCHUS VITIFOLIATA	LIVE OAK	10	18	26	GOOD	REMOVE	10 - 13
66	ORONCHUS VITIFOLIATA	LIVE OAK	10	18	26	GOOD	REMOVE	10 - 13
67	ORONCHUS VITIFOLIATA	LIVE OAK	10	18	26	GOOD	REMOVE	10 - 13

DISPOSITION CHART

NO.	SCIENTIFIC NAME	COMMON NAME	DBH INCH	SPREAD FOOT	HEIGHT FOOT	CONDITION	DISPOSITION	SHEET NO.
1	ORONCHUS VITIFOLIATA	LIVE OAK	6	20	22	GOOD	REMOVE	10 - 13
2	ORONCHUS VITIFOLIATA	LIVE OAK	7	19	19	GOOD	REMOVE	10 - 13
3	ORONCHUS VITIFOLIATA	LIVE OAK	14	27	22	GOOD	REMOVE	10 - 13
4	ORONCHUS VITIFOLIATA	LIVE OAK	10	19	18	GOOD	REMOVE	10 - 13
5	ORONCHUS VITIFOLIATA	LIVE OAK	10	19	20	GOOD	REMOVE	10 - 13
6	ORONCHUS VITIFOLIATA	LIVE OAK	16	14	16	GOOD	REMOVE	10 - 13
7	ORONCHUS VITIFOLIATA	LIVE OAK	16	14	18	GOOD	REMOVE	10 - 13
8	ORONCHUS VITIFOLIATA	LIVE OAK	17	20	22	GOOD	REMOVE	10 - 13
9	ORONCHUS VITIFOLIATA	LIVE OAK	17	20	22	GOOD	REMOVE	10 - 13
10	ORONCHUS VITIFOLIATA	LIVE OAK	17.5	10	16	GOOD	REMOVE	10 - 13
11	ORONCHUS VITIFOLIATA	LIVE OAK	11.5	10	16	GOOD	REMOVE	10 - 13
12	ORONCHUS VITIFOLIATA	LIVE OAK	11.5	10	16	GOOD	REMOVE	10 - 13
13	ORONCHUS VITIFOLIATA	LIVE OAK	11.5	10	16	GOOD	REMOVE	10 - 13
14	ORONCHUS VITIFOLIATA	LIVE OAK	11.5	10	16	GOOD	REMOVE	10 - 13
15	ORONCHUS VITIFOLIATA	LIVE OAK	11.5	10	16	GOOD	REMOVE	10 - 13
16	ORONCHUS VITIFOLIATA	LIVE OAK	11.5	10	16	GOOD	REMOVE	10 - 13
17	ORONCHUS VITIFOLIATA	LIVE OAK	11.5	10	16	GOOD	REMOVE	10 - 13
18	ORONCHUS VITIFOLIATA	LIVE OAK	11.5	10	16	GOOD	REMOVE	10 - 13
19	ORONCHUS VITIFOLIATA	LIVE OAK	11.5	10	16	GOOD	REMOVE	10 - 13
20	ORONCHUS VITIFOLIATA	LIVE OAK	11.5	10	16	GOOD	REMOVE	10 - 13
21	ORONCHUS VITIFOLIATA	LIVE OAK	11.5	10	16	GOOD	REMOVE	10 - 13
22	ORONCHUS VITIFOLIATA	LIVE OAK	11.5	10	16	GOOD	REMOVE	10 - 13
23	ORONCHUS VITIFOLIATA	LIVE OAK	11.5	10	16	GOOD	REMOVE	10 - 13
24	ORONCHUS VITIFOLIATA	LIVE OAK	11.5	10	16	GOOD	REMOVE	10 - 13
25	ORONCHUS VITIFOLIATA	LIVE OAK	11.5	10	16	GOOD	REMOVE	10 - 13
26	ORONCHUS VITIFOLIATA	LIVE OAK	11.5	10	16	GOOD	REMOVE	10 - 13
27	ORONCHUS VITIFOLIATA	LIVE OAK	11.5	10	16	GOOD	REMOVE	10 - 13
28	ORONCHUS VITIFOLIATA	LIVE OAK	11.5	10	16	GOOD	REMOVE	10 - 13
29	ORONCHUS VITIFOLIATA	LIVE OAK	11.5	10	16	GOOD	REMOVE	10 - 13
30	ORONCHUS VITIFOLIATA	LIVE OAK	11.5	10	16	GOOD	REMOVE	10 - 13
31	ORONCHUS VITIFOLIATA	LIVE OAK	11.5	10	16	GOOD	REMOVE	10 - 13
32	ORONCHUS VITIFOLIATA	LIVE OAK	11.5	10	16	GOOD	REMOVE	10 - 13
33	ORONCHUS VITIFOLIATA	LIVE OAK	11.5	10	16	GOOD	REMOVE	10 - 13
34	ORONCHUS VITIFOLIATA	LIVE OAK	11.5	10	16	GOOD	REMOVE	10 - 13
35	ORONCHUS VITIFOLIATA	LIVE OAK	11.5	10	16	GOOD	REMOVE	10 - 13
36	ORONCHUS VITIFOLIATA	LIVE OAK	11.5	10	16	GOOD	REMOVE	10 - 13
37	ORONCHUS VITIFOLIATA	LIVE OAK	11.5	10	16	GOOD	REMOVE	10 - 13
38	ORONCHUS VITIFOLIATA	LIVE OAK	11.5	10	16	GOOD	REMOVE	10 - 13
39	ORONCHUS VITIFOLIATA	LIVE OAK	11.5	10	16	GOOD	REMOVE	10 - 13
40	ORONCHUS VITIFOLIATA	LIVE OAK	11.5	10	16	GOOD	REMOVE	10 - 13
41	ORONCHUS VITIFOLIATA	LIVE OAK	11.5	10	16	GOOD	REMOVE	10 - 13
42	ORONCHUS VITIFOLIATA	LIVE OAK	11.5	10	16	GOOD	REMOVE	10 - 13
43	ORONCHUS VITIFOLIATA	LIVE OAK	11.5	10	16	GOOD	REMOVE	10 - 13
44	ORONCHUS VITIFOLIATA	LIVE OAK	11.5	10	16	GOOD	REMOVE	10 - 13
45	ORONCHUS VITIFOLIATA	LIVE OAK	11.5	10	16	GOOD	REMOVE	10 - 13

- PLANT RELOCATION NOTES
1. ATTACH TREE IDENTIFICATION TAGS THAT MATCH PLANT NUMBERS.
 2. WATER TREE ROOT ZONES TO FIELD CAPACITY FOR 3 CONTINUOUS DAYS BEFORE ROOT PRUNING.
 3. ROOT PRUNE 6 WEEKS BEFORE RELOCATION.
 4. ROOT PRUNE WITH EQUIPMENT TO SEVER ROOTS. ENSURE ROOTS ARE NOT TORN OR PULLED.
 5. NUMBER ONE OR BETTER.
 6. WATER WITH 100% SLOTTED SPRINKLER HEADS AND STANDARDS FLORIDA.
 7. BRACE ROOT PRUNED TREES AWAITING RELOCATION.
 8. INSTALL TREES WITHIN 24 HOURS OF REMOVAL FROM THEIR ORIGINAL LOCATION.
 9. MAINTAIN TREES IN THEIR ORIGINAL CONDITION OR BETTER.

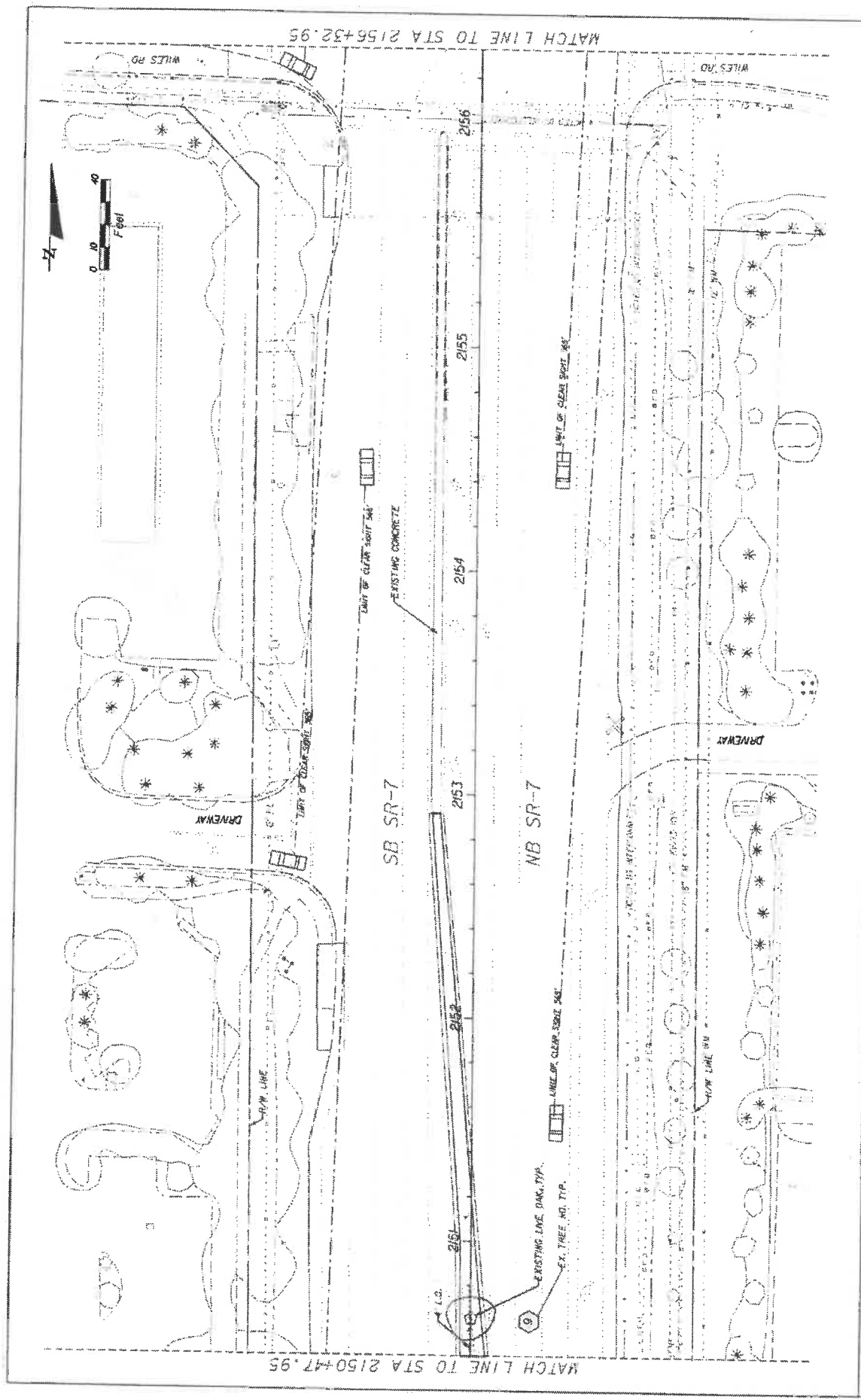


STATE OF FLORIDA
DEPARTMENT OF TRANSPORTATION
CITY OF COCONUT CREEK
ROAD NO. 7
FISCAL PROJECT ID 444935-1-74-01

REVISIONS

SHEET NO. LD-04

4/20/2025 4:00:00 PM 2:49:00 PM 2:49:00 PM 2:49:00 PM 2:49:00 PM



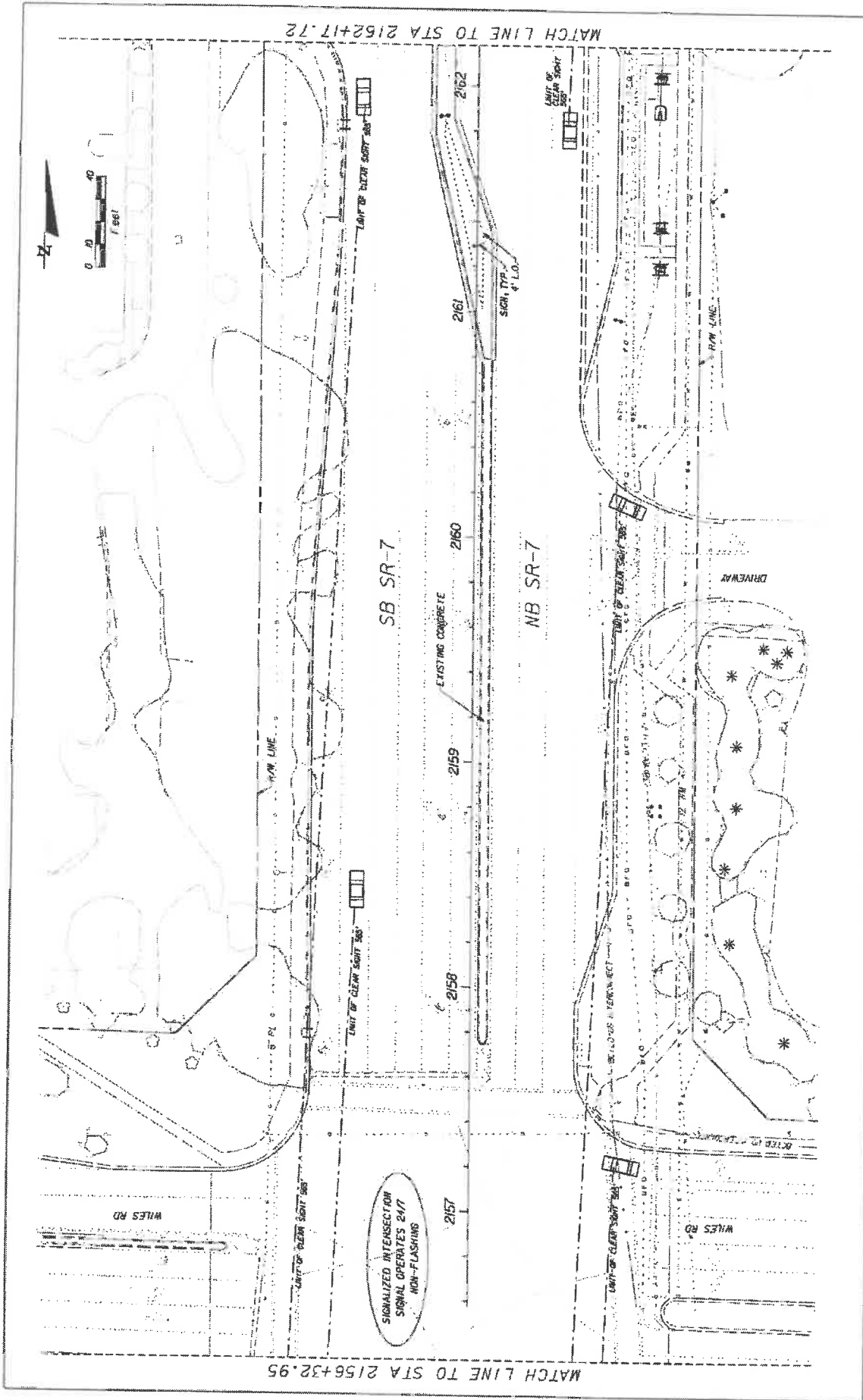
REVISIONS	STATE OF FLORIDA		SHEET NO.
	DEPARTMENT OF TRANSPORTATION		
DATE	PROJECT NO.	PROJECT TITLE	TREE DISPOSITION PLAN
	7	44-035 1-74-01	
KS KEITHA SCHNARS A DIVISION OF KGI		DESIGNED BY	DATE
COCOON CREEK CHECK		4-4-03	
BUTTERNUT CAPITAL OF THE WORLD		DRAWN BY	

44-035 1-74-01

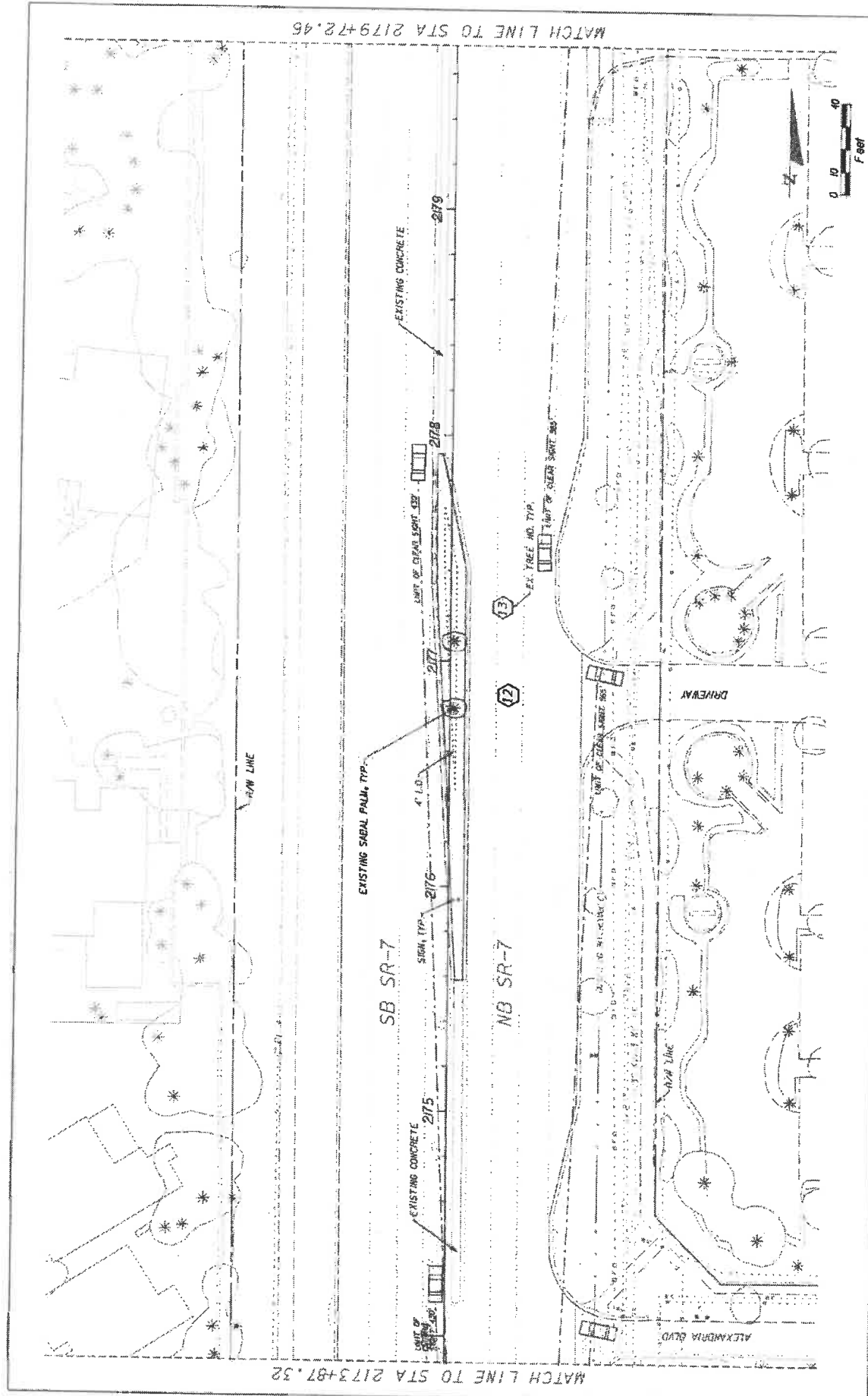
DATE

DATE

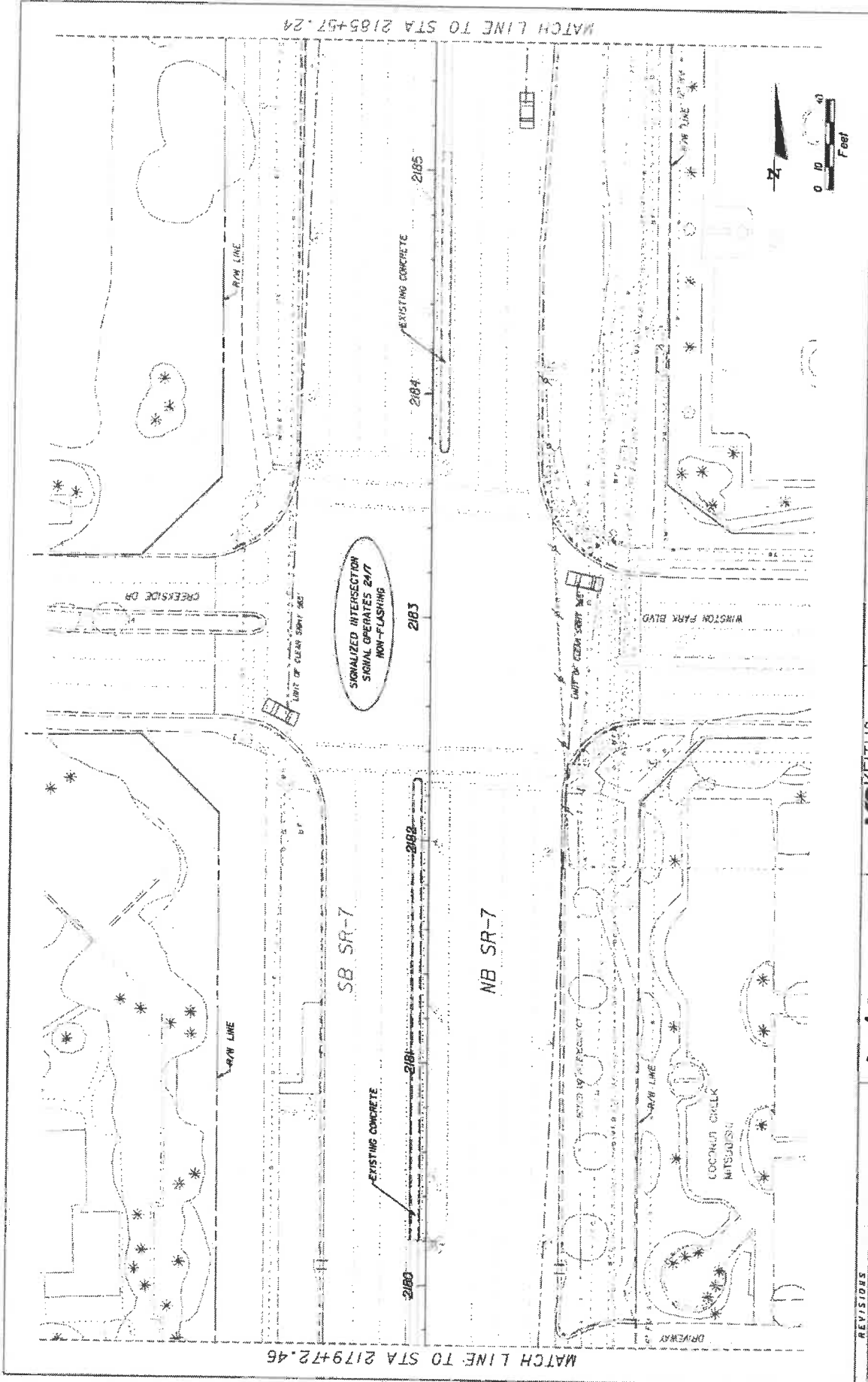
DATE



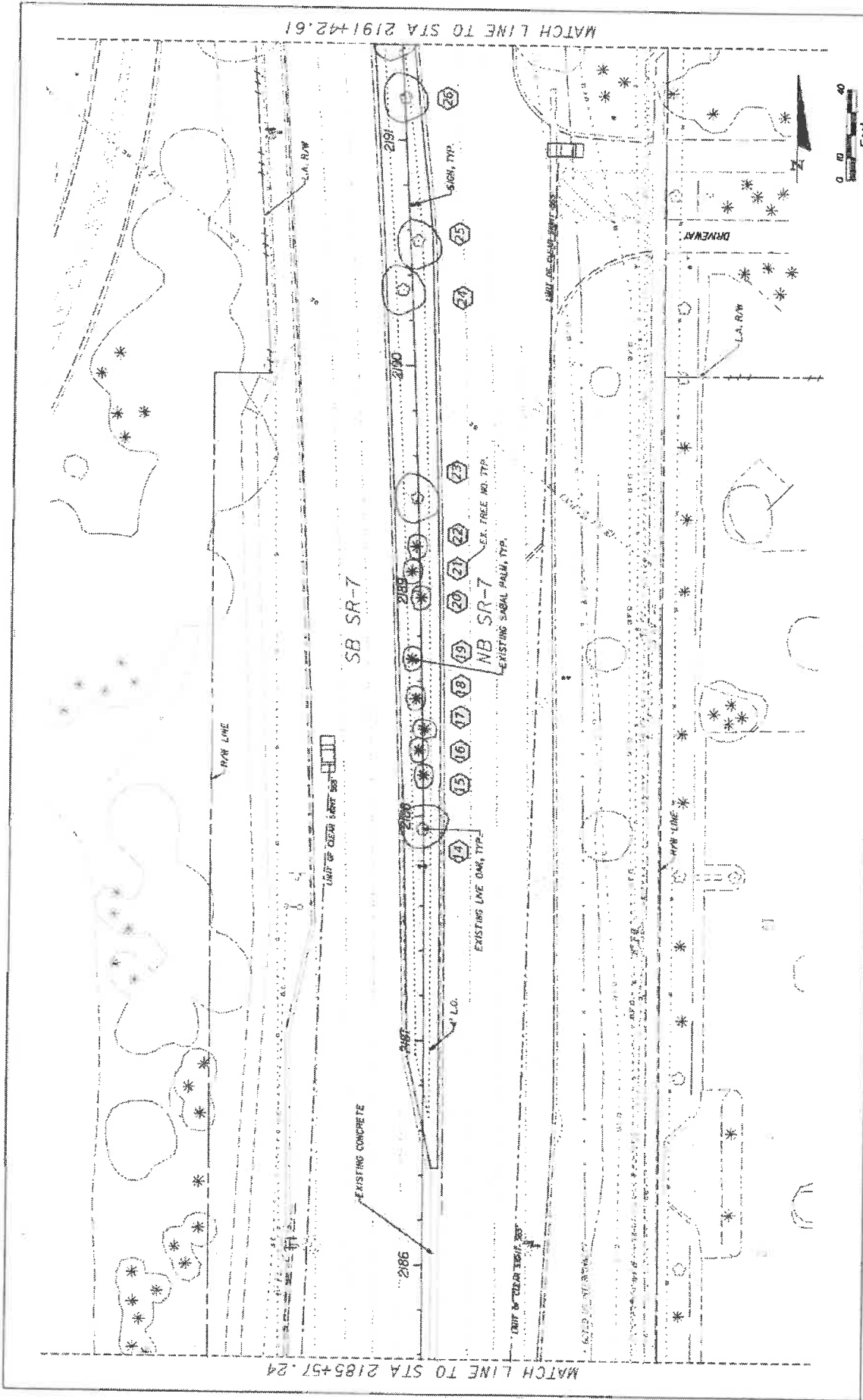
REVISED	REVISED	REVISED	REVISED
KEITH & SOHNARS IN A DIVISION OF KCI <small>INCORPORATED IN THE STATE OF FLORIDA</small> <small>10000 W. UNIVERSITY AVENUE, SUITE 200, TAMPA, FL 33613</small> <small>TEL: 813.288.1111 FAX: 813.288.1112</small>		STATES OF FLORIDA DEPARTMENT OF TRANSPORTATION ROAD NO. 7 CITY OF COCONUT CREEK FINANCIAL PROJECT ID 444935-1-74-01	
Coconut Creek BUTTERFLY CAPITAL OF THE WORLD		TREE DISPOSITION PLAN LO-07	



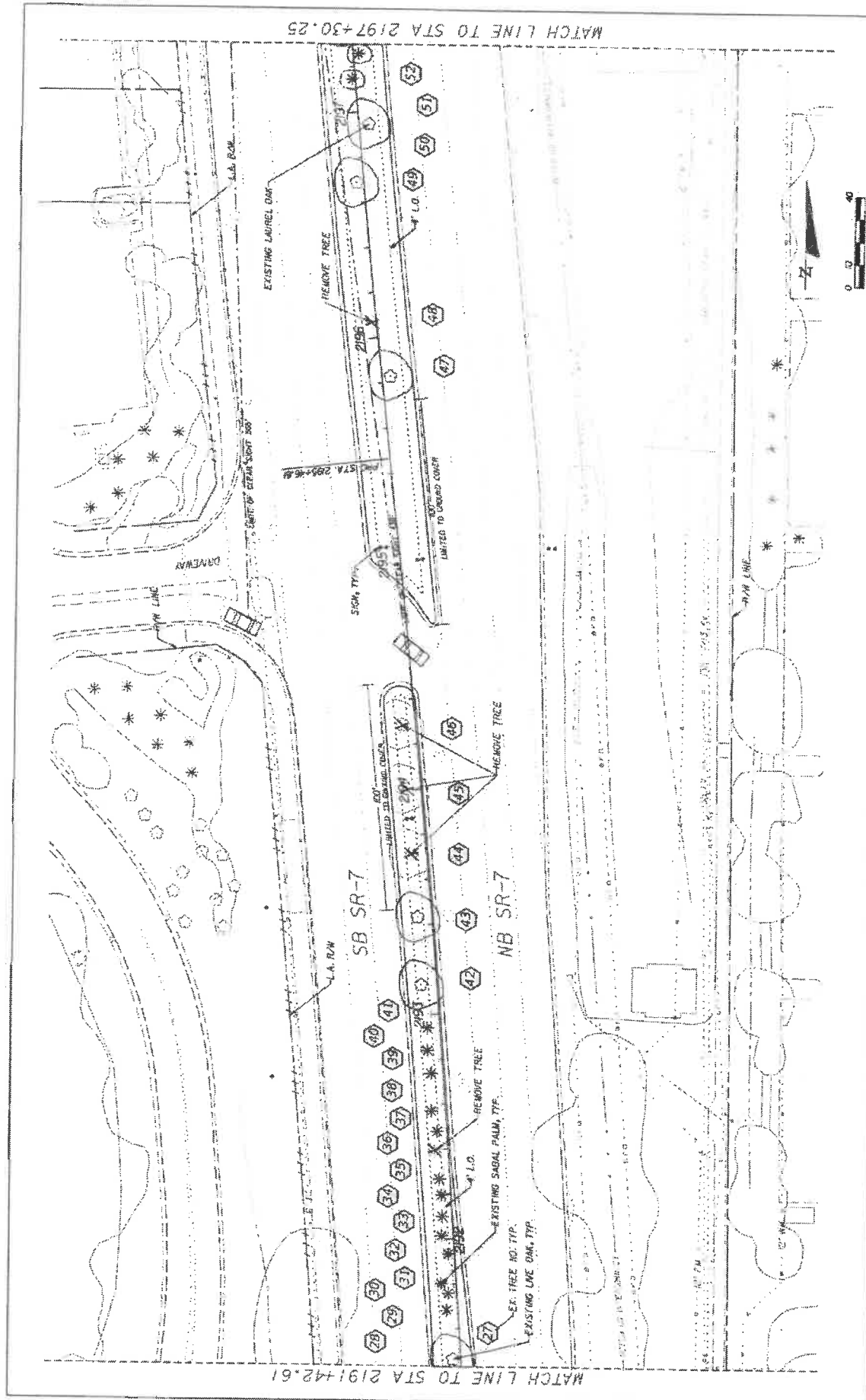
DATE	REVISORS	DESCRIPTION
 Coconut Creek BUTTERFLY CAPITAL OF THE WORLD		
 KS Keith & Schnars P.A. DIVISION OF KCI <small>INCORPORATED IN THE STATE OF FLORIDA 10000 W. UNIVERSITY AVENUE, SUITE 200, PALM BEACH, FL 33411 PHONE: 561-840-0000 FAX: 561-840-0001</small>		
ROAD NO.	CITY OF	PRINCIPAL PROJECT ID
7	COCONUT CREEK	44835-174-01
STATES OF FLORIDA DEPARTMENT OF TRANSPORTATION 4-18-2009 2:00:00 PM 2009-07-14 11:51 AM WORK OF SA 7 INC 0-25 FINE-COCONUT.PLAN010.dwg		
TREE DISPOSITION PLAN		SHEET NO. LD-10



REVISIONS	DRAWN BY	DATE	 Coconut Creek BUTTERFLY CAPITAL OF THE WORLD	 KS KEITH & SCHNARS P.A. DIVISION OF KCI <small>LANDSCAPE ARCHITECTS OF RECORD, 1300 W. WINDY HILLS BLVD., SUITE 200, COCONUT CREEK, FL 33075</small> <small>MEMBER OF INTERNATIONAL LEED</small>	ROAD NO. 7 CITY OF COCONUT CREEK FINANCIAL PROJECT ID 444935-1-74-01	STATES OF FLORIDA DEPARTMENT OF TRANSPORTATION	SHEET NO. LD-4
					TREE DISPOSITION PLAN	4/2/20 2007 N 2370 JACOBO WOODS ST F.H.R.E. GREAT PLAINS CAD/2007/04/20/07	



DATE	REVISIONS	06/20/2018	STATE OF FLORIDA DEPARTMENT OF TRANSPORTATION	SAFETY No.
			ROAD NO. 1	LD-12
			CITY OF COCONUT CREEK	
			FRANCIS PROJECT ID. 444535-1-74-01	
			KS KEITH & SCHWAB P.A. DIVISION OF KCI	
			REGISTERED PROFESSIONAL ENGINEER NO. 12587 FLORIDA REGISTERED PROFESSIONAL LANDSCAPE ARCHITECT NO. 12587	
			COCONUT CREEK BATTERY CAPITAL OF THE WORLD	
			4/2/2018	
			COCONUT CREEK	
			2191+42.61 STA TO STA 2185+57.24	
			TREE DISPOSITION PLAN	



REVISIONS	DATE	BY	APP'D
 Coconut Creek BUTTERFLY CAPITAL OF THE WORLD!		KS KEITH & SCHNARS A DIVISION OF KCI <small>4000 N. University Ave., Ft. Lauderdale, FL 33309-3000 LICENSED PROFESSIONAL ENGINEERS AND ARCHITECTS CONTRACTORS OF AUTOMOTIVE TRAILERS</small>	
STATES OF FLORIDA DEPARTMENT OF TRANSPORTATION ROAD NO. 7 CITY OF COCONUT CREEK PROJECT ID 444935-1-74-01		SHEET NO. LD-13	

LANDSCAPE TABULATION OF QUANTITIES

Date: 4/11/2019
Local Name: S.R. 7 HBC GRANT

Client: Mr. & Mrs. John C. & Mrs. Mary Ann C. Grant, 11230 S.W. 11th St., Ft. Lauderdale, FL 33309

KEY	QTY	SCIENTIFIC NAME	COMMON NAME	SPACING	CAL	SIZE	REMARKS
SHRUBS							
IV	184	ILEX VOMIFORA 'STOKES DWARF'	DWARF YAUPOIN HOLLY	24 IN O.C.	N/A	36 12 IN HT X 12 IN SPR	
CI	842	CHRYSOBALANUS ICACO 'HORIZONTALIS'	HORIZONTAL COCOPLUM	24 IN O.C.	N/A	36, 48 IN HT X 9 IN SPR	
TJ	741	TRACHELOSPERMUM JASMINOIDES	CONFEDERATE JASMINE	24 IN O.C.	N/A	36 18 IN HT X 9 IN SPR	
TREES							
BA	3	BULNESIA ARBOREA	IVERWOOD TREE	AS SHOWN	2.5 IN	45G 10 FT HT 5 FT SPR	
LS	8	QUERUS GRAPHE MYRTLE	QUERUS GRAPE MYRTLE	AS SHOWN	2 IN	10 FT HT X 6 FT SPR	SINGLE TRUNK (STANDARD)
QV	10	QUERUS VIRGINIANA	SOUTHERN LIVE OAK	AS SHOWN	3-4 IN	14 FT HT X 7 FT SPR	
SP	10	SABAL PALMETTO	SABAL PALM	AS SHOWN	N/A	12 - 24 FT, O.A.	BOODED
SPR	2	SABAL PALMETTO - RELOCATED	RELOCATED SABAL PALM	AS SHOWN	N/A		
PE	20	PTYCHOSPERMA ELEGANS	SOLITARE PALM	AS SHOWN	4 IN	5 FT CT, 10 FT CT, MATCHED	
SOB							
SA	18,718	STENOTAPHRUM SECUNDATUM	ST. AUGUSTINE GRASS	BOG		SQUARE FOOT	
MULCH							
	1,200		RED MULCH	MULCH		CUBIC YARDS	
PAVERS							
	7,800		CONCRETE PAVERS	PAVERS		SQUARE FOOT	

REVISIONS



KS KEITH & SCHNARS
P.A. DIVISION OF KCI
LANDSCAPE ARCHITECTS & PLANNERS
1100 S.W. 10th St., Ft. Lauderdale, FL 33304
CERTIFICATE OF PROFESSIONAL FOST

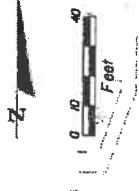
STATE OF FLORIDA
DEPARTMENT OF TRANSPORTATION
PROJECT NO. 7
CITY OF COCONUT CREEK
FINANCIAL PROJECT ID 444935-1-14-01

PLANT SCHEDULE

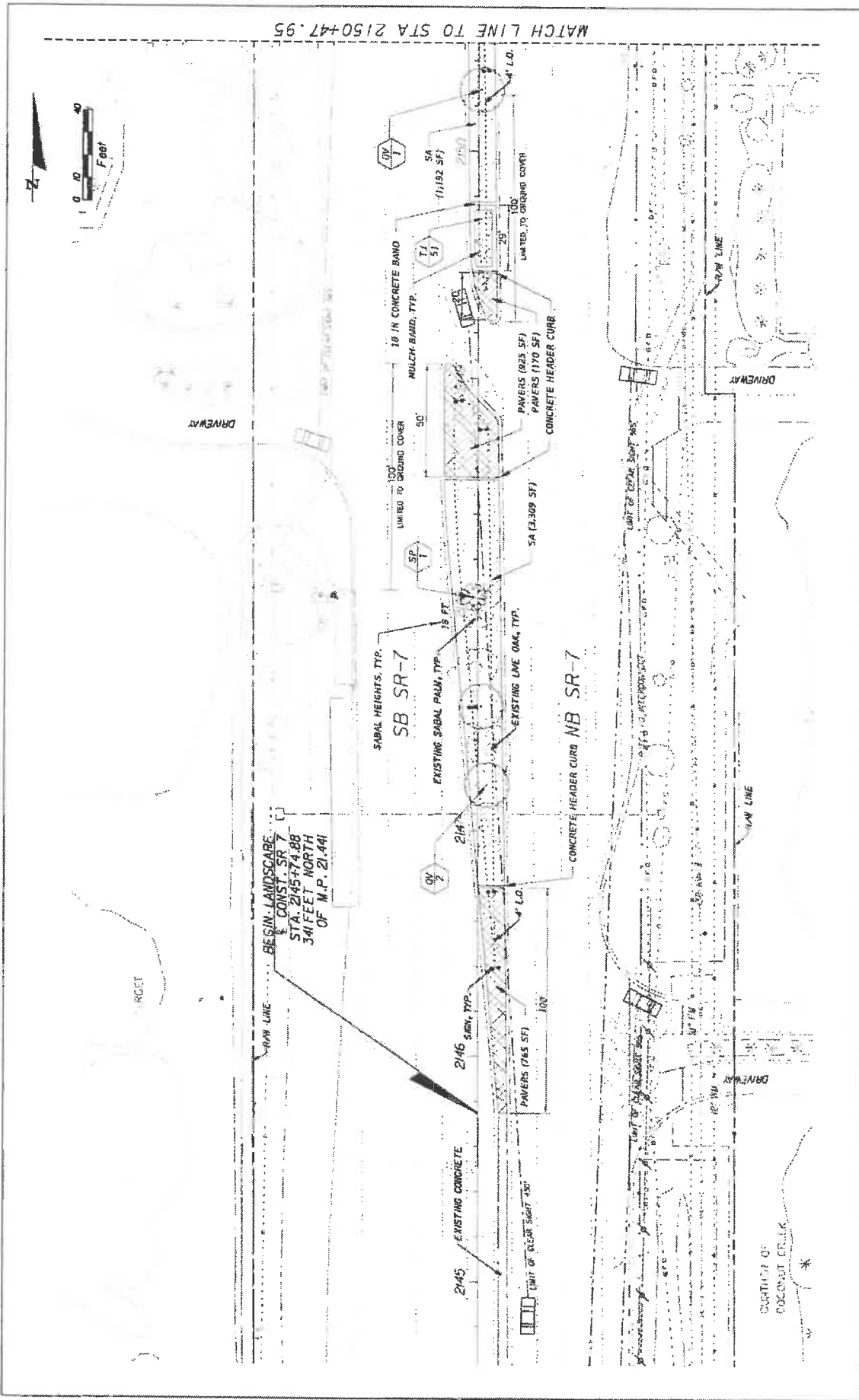
SHEET NO.

LD-15

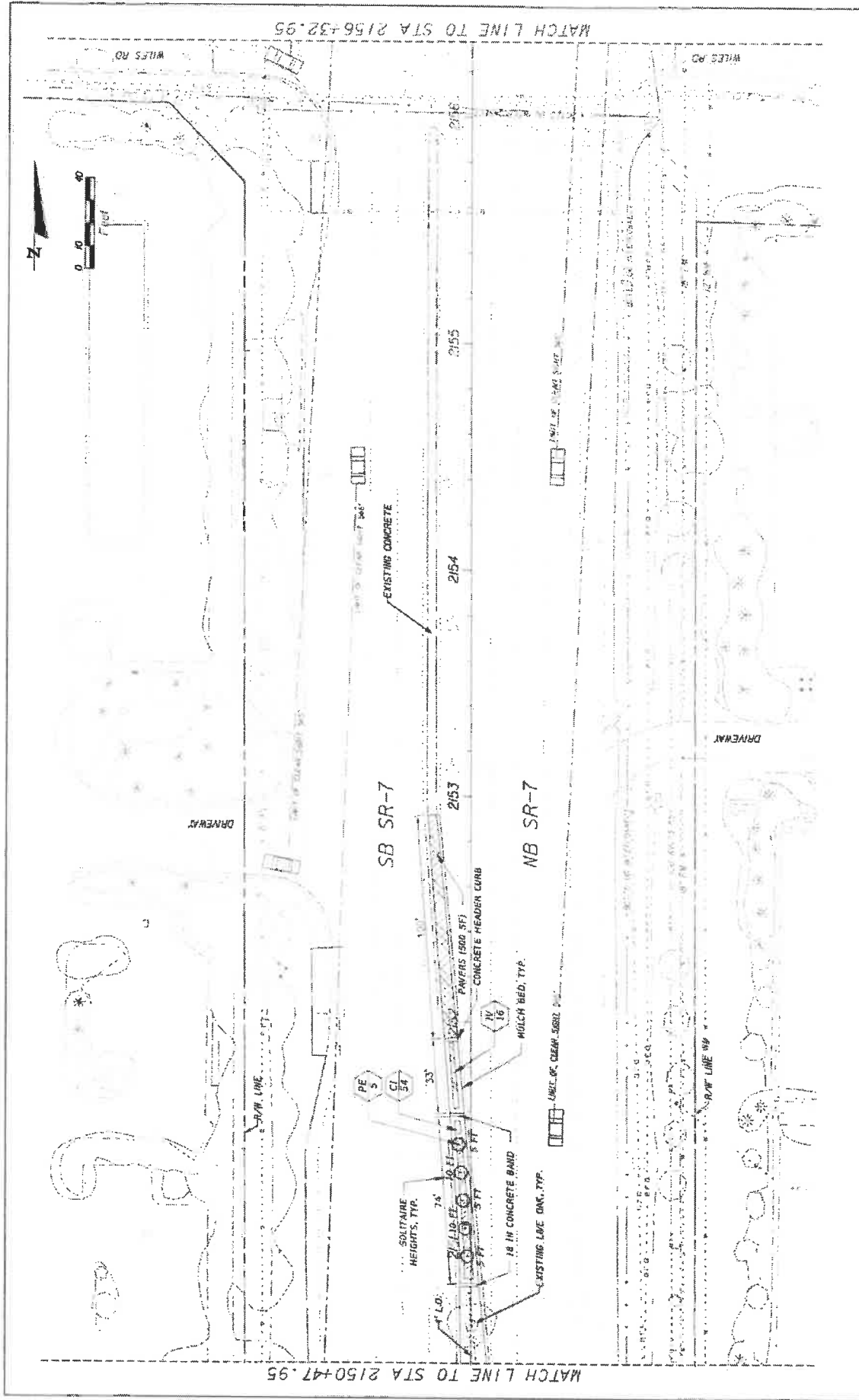
4/12/2019 05:28:41 PM C:\Users\jgrant\Documents\PLANT SCHEDULE.dwg



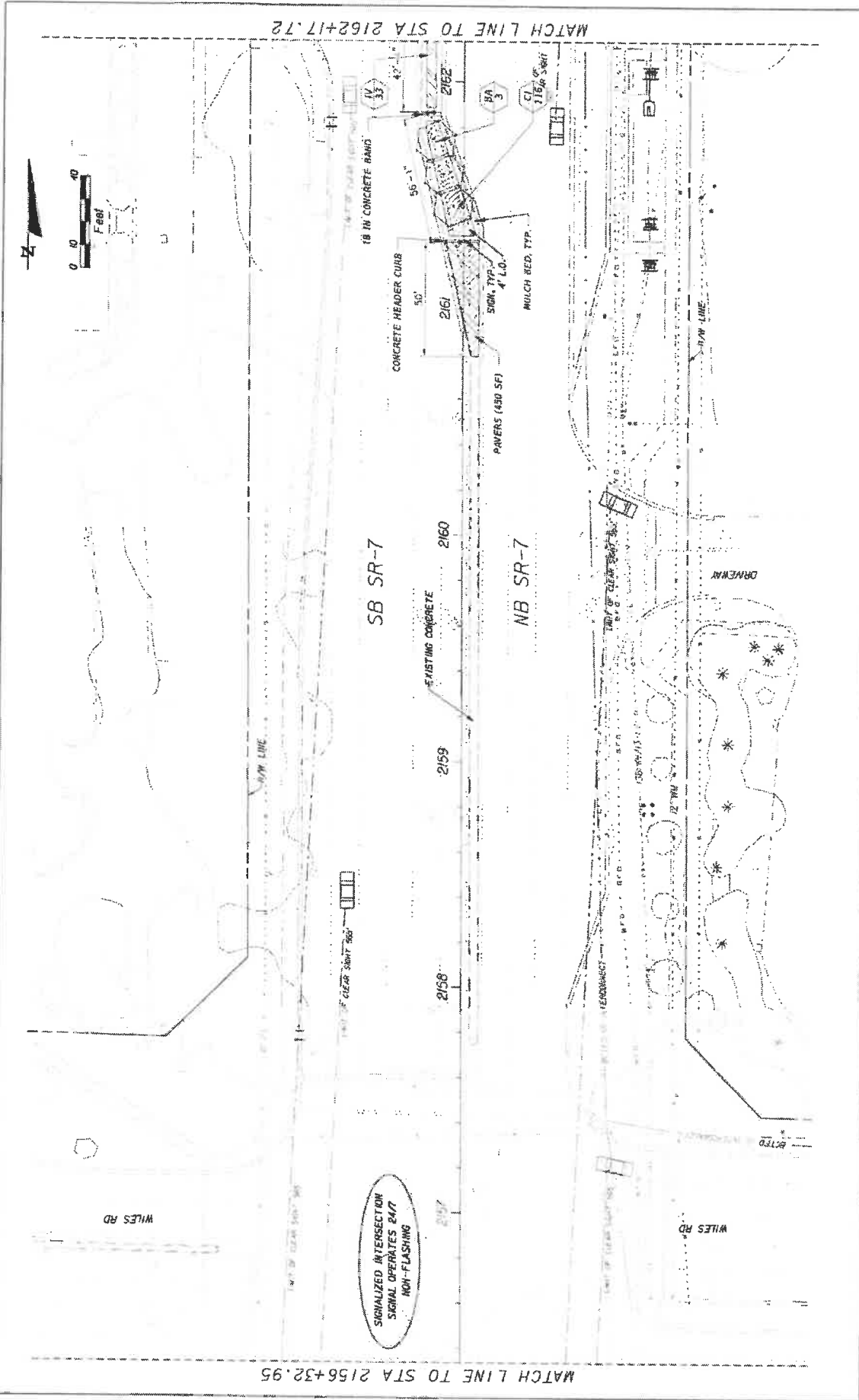
MATCH LINE TO STA 2150+47.95



DATE	REVISIONS	DESCRIPTION	STATE OF FLORIDA DEPARTMENT OF TRANSPORTATION ROAD NO. 7 CITY OF COCONUT CREEK 449335-1-74-C1	LANDSCAPE PLAN	SHEET NO. LD-18
			KS KEITH & SCHNARS P.A. DIVISION OF KCI 2000 N. GARDEN AVENUE, SUITE 100, TUCSON, AZ 85718 LANDSCAPE ARCHITECTS LICENSE NO. 1127		
			4/2/2019		

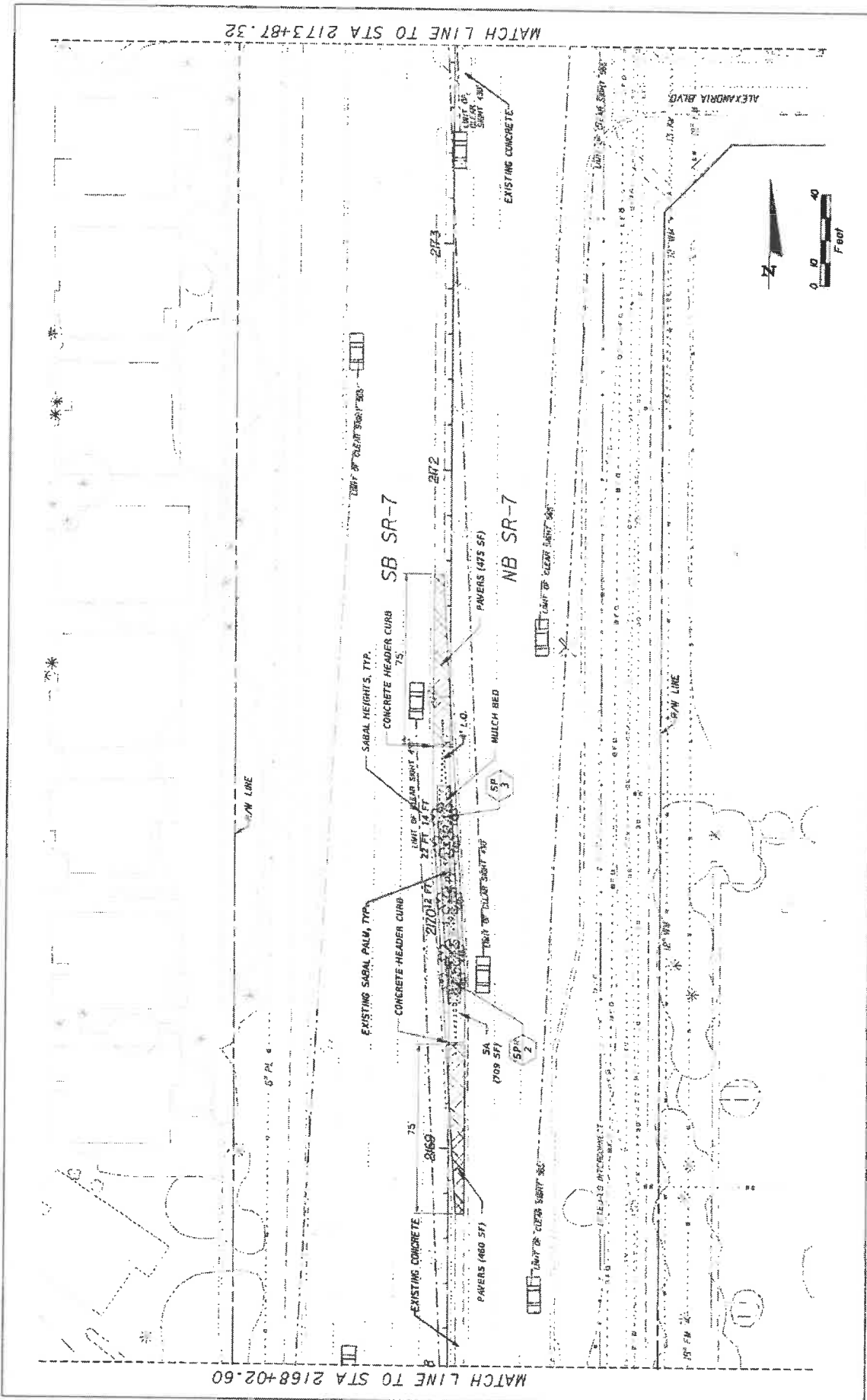


DATE	REVISIONS	DESCRIPTION	STATE OF FLORIDA DEPARTMENT OF TRANSPORTATION	SHEET NO. LD-19
	7			
			LANDSCAPE PLAN	
			LANDSCAPE PLAN	



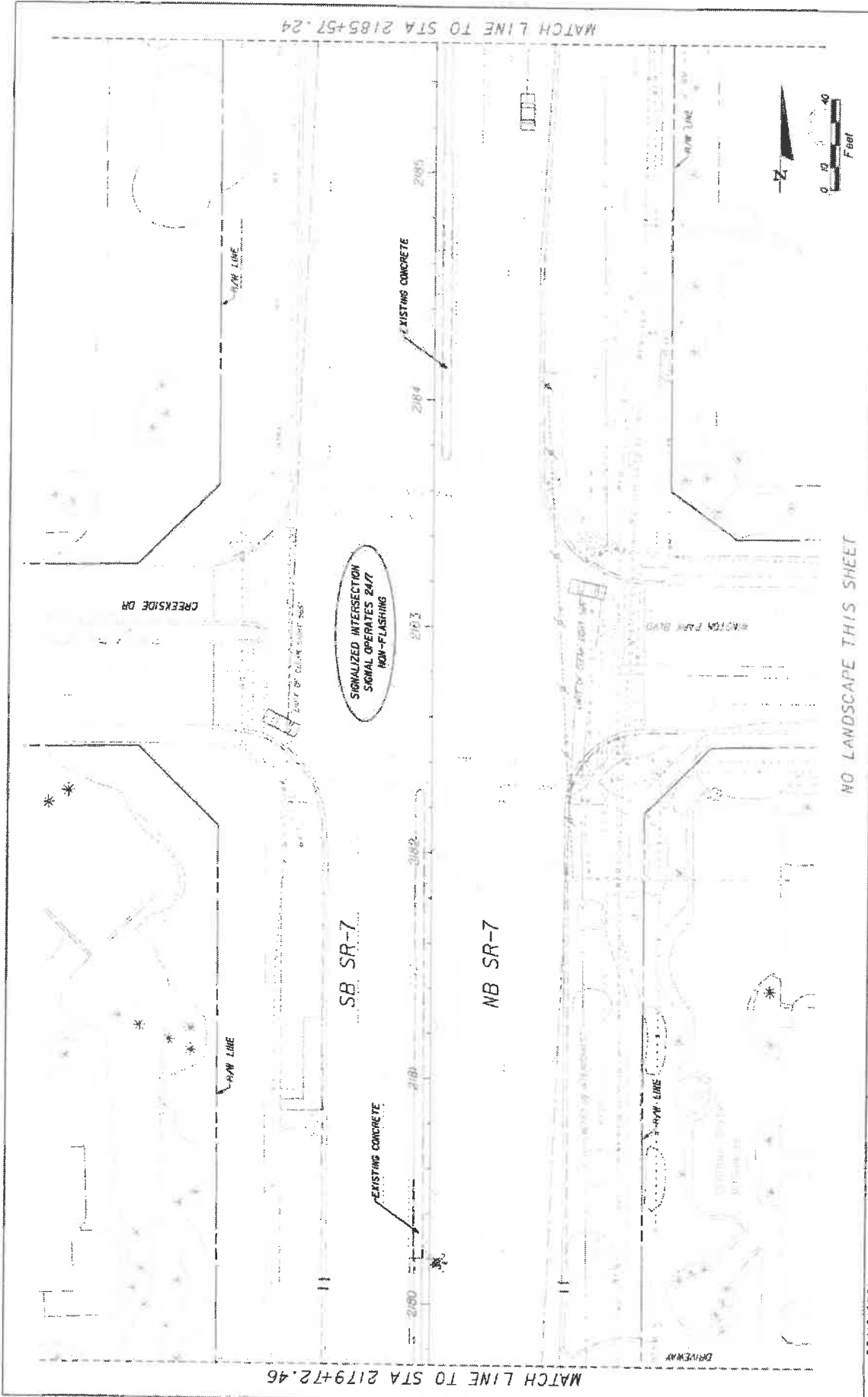
DATE	REVISIONS	 KS KEITH & SCHNARS A DIVISION OF KCI <small>ASK ANYONE IN THE INDUSTRY FOR THE BEST QUALITY AND SERVICE. YOUR SAVORING IS OUR BUSINESS.</small> <small>10000 W. WINDY HILL ROAD, SUITE 100, COCONUT CREEK, FL 33043</small> <small>TEL: 407-591-1100 FAX: 407-591-1101</small>	STATE OF FLORIDA DEPARTMENT OF TRANSPORTATION	FINANCIAL PROJECT ID 444935-1-74-01	SHEET NO. LD-20
			ROAD NO. 7	CITY OF COCONUT CREEK	LANDSCAPE PLAN

6/2/2019 8:58:39 AM 2020-09-18 1:10:00 PM 1:10:00 PM 1:10:00 PM 1:10:00 PM



REVISIONS	STATE OF FLORIDA DEPARTMENT OF TRANSPORTATION		SHEET NO. LD-22
	ROAD NO. 7	FINANCIAL PROJECT ID 444935-1-74-01	
KS KEITH & SCHNARS PLA A DIVISION OF KCI		LANDSCAPE PLAN	
CITY OF COCONUT CREEK		PROJECT NO. 444935-1-74-01	
BUTTERNUT CAPITAL OF THE WORLD		DATE 02/20/09	

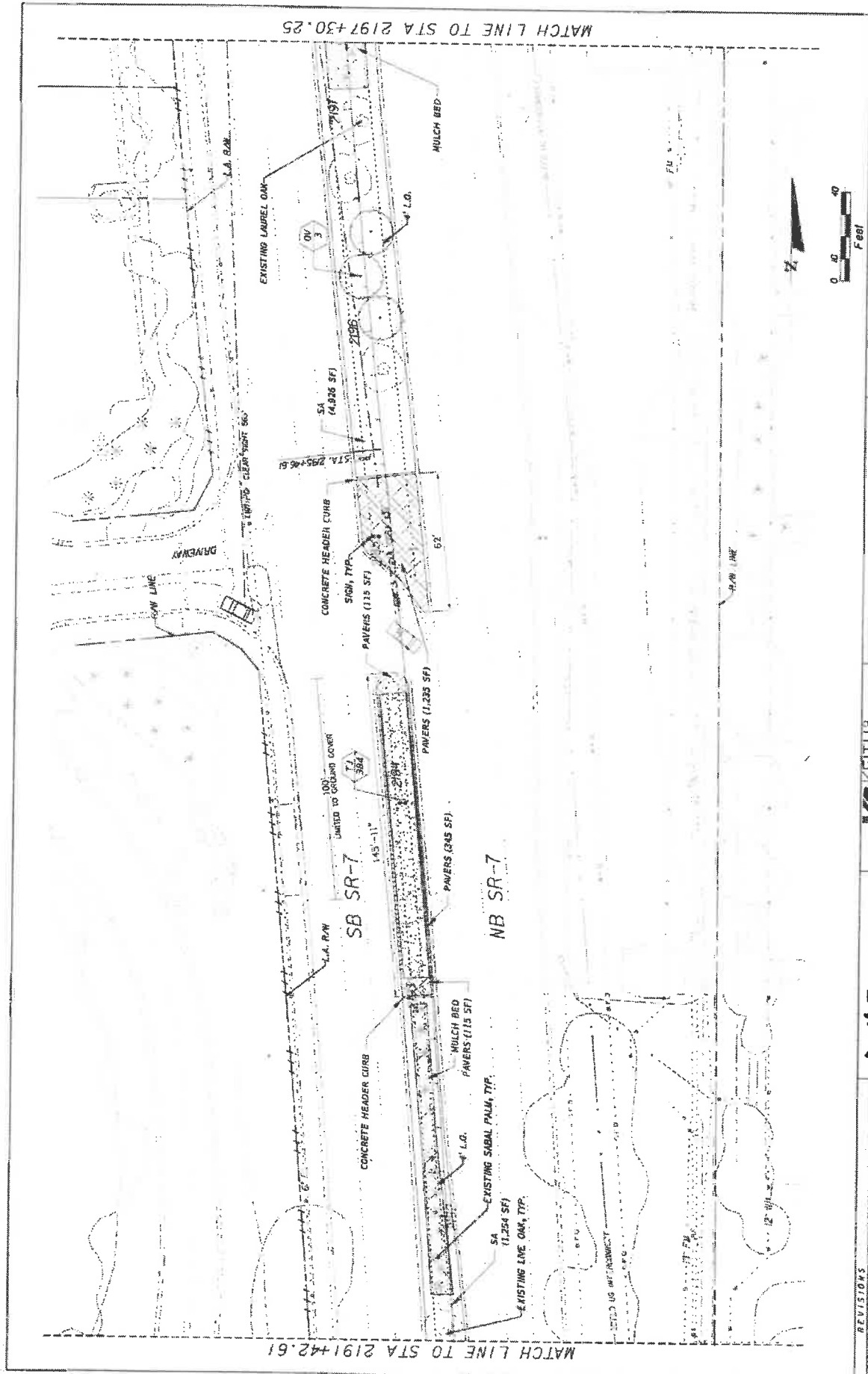
DATE: 02/20/09



NO LANDSCAPE THIS SHEET

REVISIONS	DESCRIPTION	 KEITH & SCHNARS IS A DIVISION OF KCI <small>KCI is a registered professional engineering firm, license no. 15,000, State of Florida, and a registered landscape architect, license no. 15,000, State of Florida.</small>	STATE OF FLORIDA DEPARTMENT OF TRANSPORTATION ROAD NO. 7 CITY OF COCONUT CREEK FINANCIAL PROJECT ID 444935-1-74-01	SHEET NO.
				LD-24





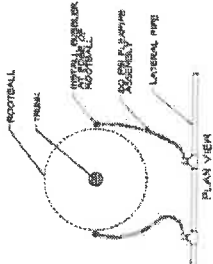
DATE	REVISIONS	 K.S. KEITH & S. SCHNARS P.A. DIVISION OF KCI <small>10000 W. Greenway, Suite 100, Jacksonville, FL 32256-1000 (904) 386-1000</small>	STATE OF FLORIDA DEPARTMENT OF TRANSPORTATION	SHEET NO.	
			ROAD NO. 7 CITY OF COCONUT CREEK FINANCIAL PROJECT ID 444935-1-74-01	LD-26	
		 COCONUT CREEK BUTTERFLY CAPITAL OF THE WORLD	LANDSCAPE PLAN		

MATCH LINE TO STA 2191+42.61
 MATCH LINE TO STA 2197+30.25
 4/22/2019 8:03:14 AM
 Z:\Projects\2019\SR 7 NB SR-7\Drawings\LD-26.dwg

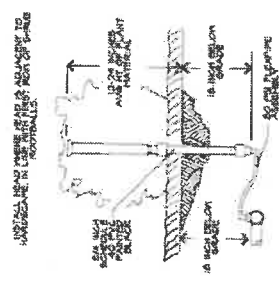
1. INSTALL HOPE BORE UNDER ROADWAYS AND OTHER INTERVENCING AREAS.
2. ROAD TRENCHING ONLY PERMITTED WITH WRITTEN APPROVAL.
3. ROAD TRENCHING REQUIRES BACKFILLING WITH CRUSHED FILL.



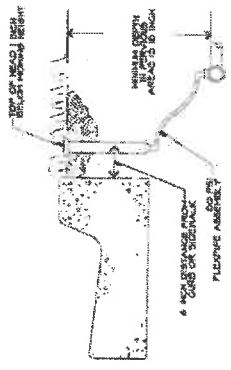
ROAD CROSSING



TREE BUBBLER

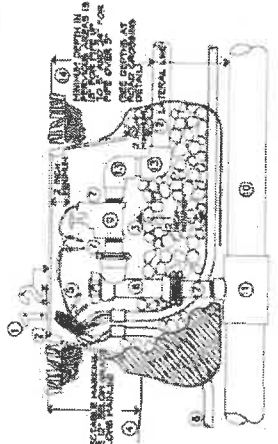


IRRIGATION HEAD IN PLANT BED



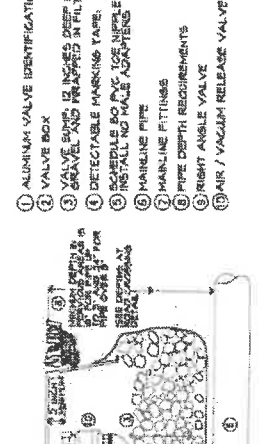
IRRIGATION HEAD IN TURF

1. ALUMINUM VALVE IDENTIFICATION NUMBER SCREWED IN PLACE.
2. VALVE BOX.
3. VALVE SHAFT IS 1/2 INCHES DEEP FILLED WITH 5/8 INCH DIA. GRAVEL AND WRAPPED IN FILTER FABRIC.
4. DETECTABLE MARKING TAPE.
5. CONTROL WIRE AND WIRE CONNECTORS.
6. CONTROL WIRE CONDUIT.
7. SCHEDULE 40 PVC TEE AND 1/2 INCH DIA. PVC TEE.
8. RIGHT ANGLE GATE VALVE.
9. ELECTRIC CONTROL VALVE.



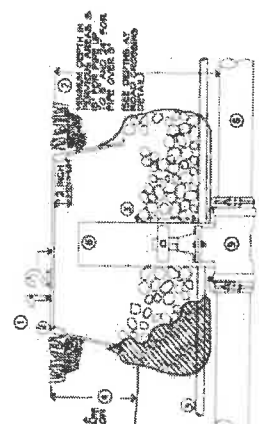
REMOTE CONTROL VALVE

1. ALUMINUM VALVE IDENTIFICATION NUMBER SCREWED IN PLACE.
2. VALVE BOX.
3. VALVE SHAFT IS 1/2 INCHES DEEP FILLED WITH 5/8 INCH DIA. GRAVEL AND WRAPPED IN FILTER FABRIC.
4. DETECTABLE MARKING TAPE.
5. SCHEDULE 40 PVC TEE AND 1/2 INCH DIA. PVC TEE.
6. MAINLINE PIPE.
7. PIPE DEPTH REQUIREMENTS.
8. RIGHT ANGLE VALVE.
9. AIR / VACUUM RELEASE VALVE.



AIR/VACUUM RELEASE VALVE

1. ALUMINUM VALVE IDENTIFICATION NUMBER SCREWED IN PLACE.
2. VALVE BOX.
3. VALVE SHAFT IS 1/2 INCHES DEEP FILLED WITH 5/8 INCH DIA. GRAVEL AND WRAPPED IN FILTER FABRIC.
4. DETECTABLE MARKING TAPE.
5. CONTROL WIRE CONDUIT.
6. MAINLINE PIPE.
7. PIPE DEPTH REQUIREMENTS.
8. PVC ACCESS TUBE.
9. ISOLATION VALVE.



MAINLINE ISOLATION VALVE

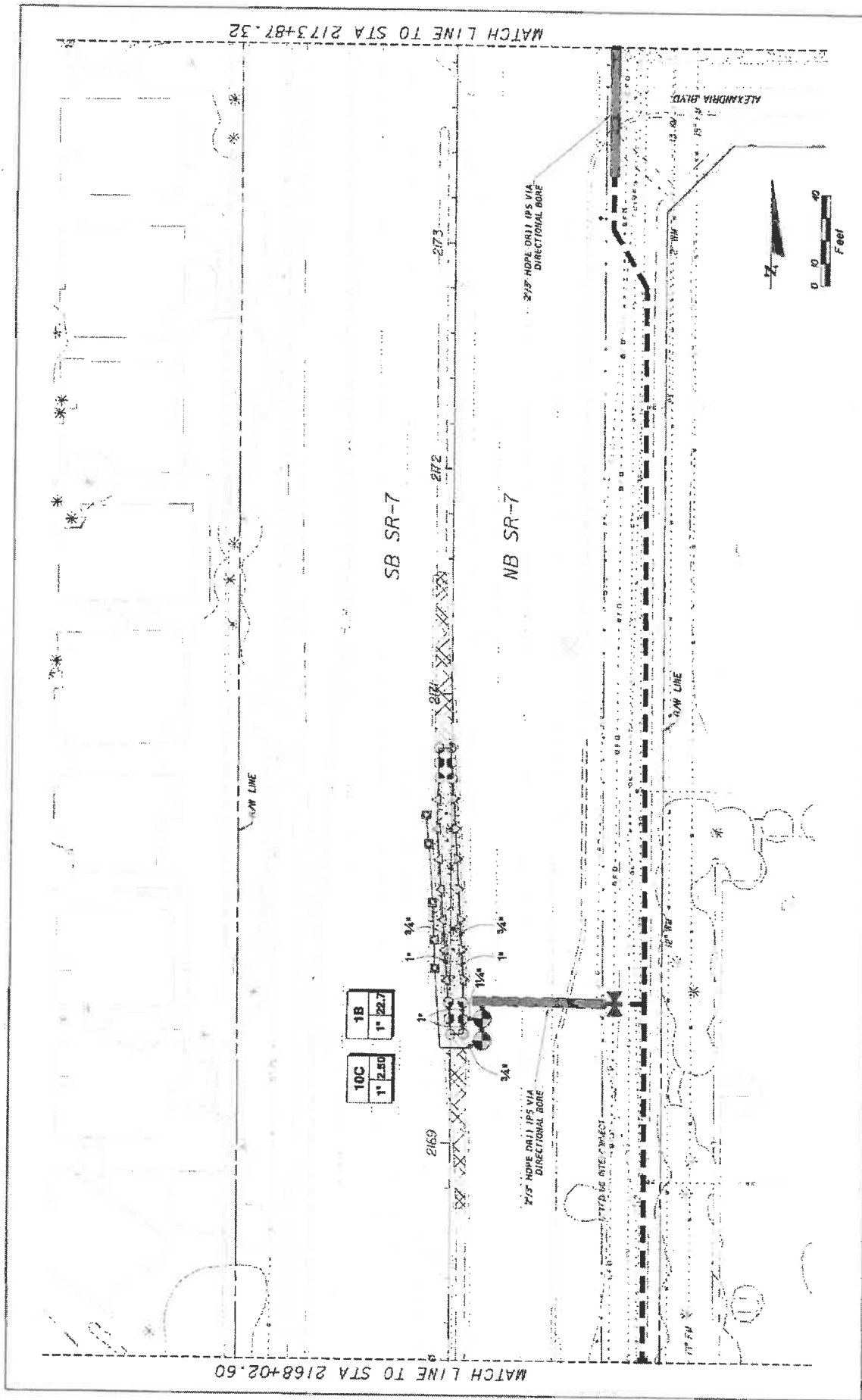
1. MAINLINE PIPE.
1. MAINLINE FITTINGS.
2. LATERAL LINE PIPES.
2. LATERAL LINE FITTINGS.
3. MATERIAL LINE FITTINGS.
3. PVC SCHEDULE 40.
4. PIPE DEPTH REQUIREMENTS.

REVISIONS		STATE OF FLORIDA DEPARTMENT OF TRANSPORTATION		SHEET NO. LD-29	
PROJECT NO. 44-9535-74-01		FINANCIAL PROJECT ID 44-9535-74-01		IRRIGATION DETAILS	
DRAWN BY K. KEITH & S. SCHNARS		DATE OF CONCRETE		DATE OF INSTALLATION	
CHECKED BY K. KEITH & S. SCHNARS		CITY OF COCONUT CREEK		PROJECT NO. 44-9535-74-01	
DESIGNED BY K. KEITH & S. SCHNARS		COUNTY COCONUT		SHEET NO. LD-29	
APPROVED BY K. KEITH & S. SCHNARS		CITY OF COCONUT CREEK		PROJECT NO. 44-9535-74-01	
DATE 11/11/2011		CITY OF COCONUT CREEK		SHEET NO. LD-29	
SCALE AS SHOWN		CITY OF COCONUT CREEK		PROJECT NO. 44-9535-74-01	
PROJECT NO. 44-9535-74-01		CITY OF COCONUT CREEK		SHEET NO. LD-29	
DRAWN BY K. KEITH & S. SCHNARS		DATE OF CONCRETE		DATE OF INSTALLATION	
CHECKED BY K. KEITH & S. SCHNARS		CITY OF COCONUT CREEK		PROJECT NO. 44-9535-74-01	
DESIGNED BY K. KEITH & S. SCHNARS		COUNTY COCONUT		SHEET NO. LD-29	
APPROVED BY K. KEITH & S. SCHNARS		CITY OF COCONUT CREEK		PROJECT NO. 44-9535-74-01	
DATE 11/11/2011		CITY OF COCONUT CREEK		SHEET NO. LD-29	
SCALE AS SHOWN		CITY OF COCONUT CREEK		PROJECT NO. 44-9535-74-01	

KS KEITH & S. SCHNARS
A DIVISION OF KCI
18015 AMERICAN BLVD. SUITE 100
CORAL SPRING, FL 32935
TEL: 352.344.1111
WWW.KCSCHNARS.COM

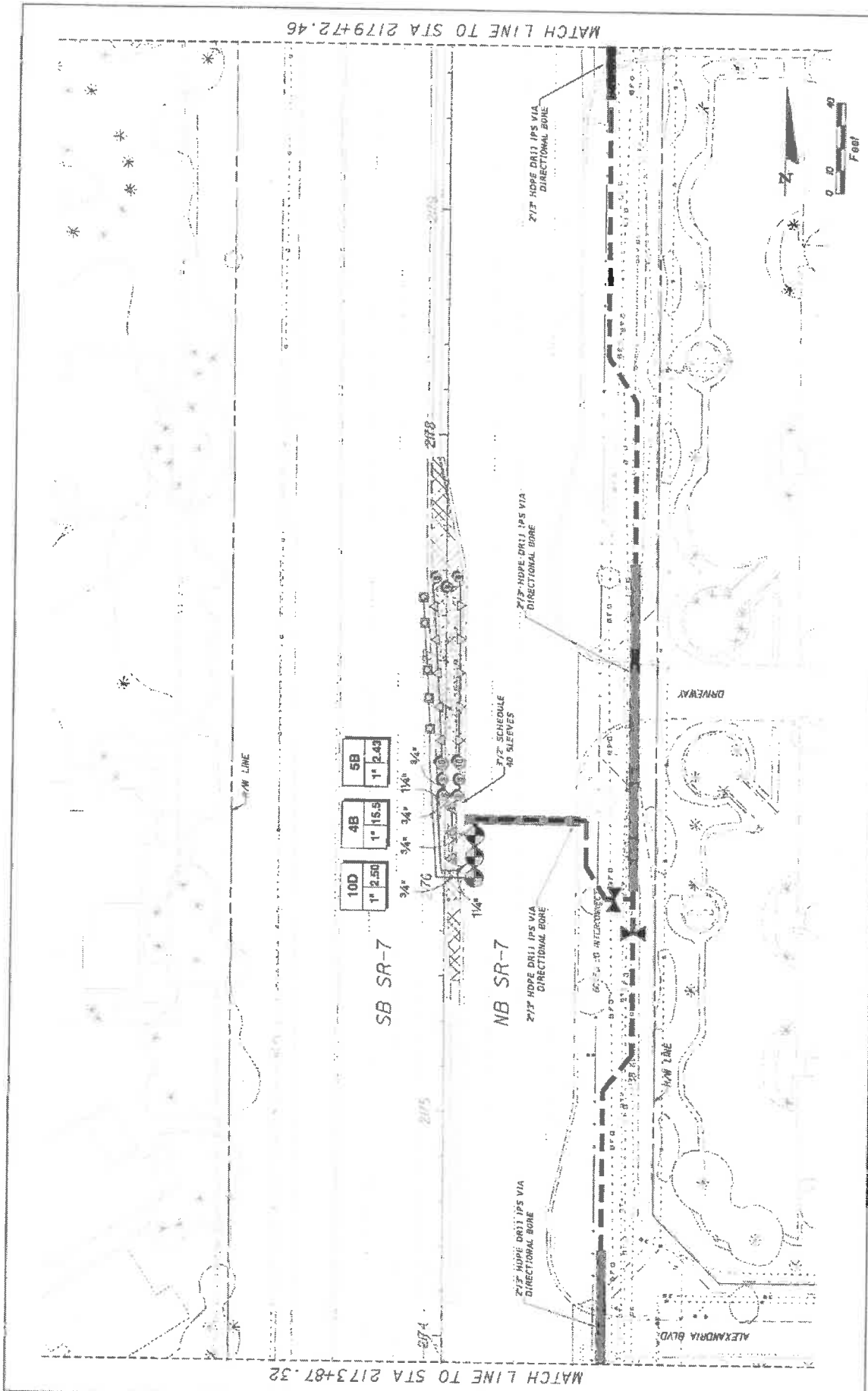
Coconut Creek
BUTTERFLY CAPITAL OF THE WORLD

STATE OF FLORIDA
DEPARTMENT OF TRANSPORTATION
FINANCIAL PROJECT ID
44-9535-74-01
CITY OF
COCONUT CREEK
PROJECT NO.
44-9535-74-01
SHEET NO.
LD-29

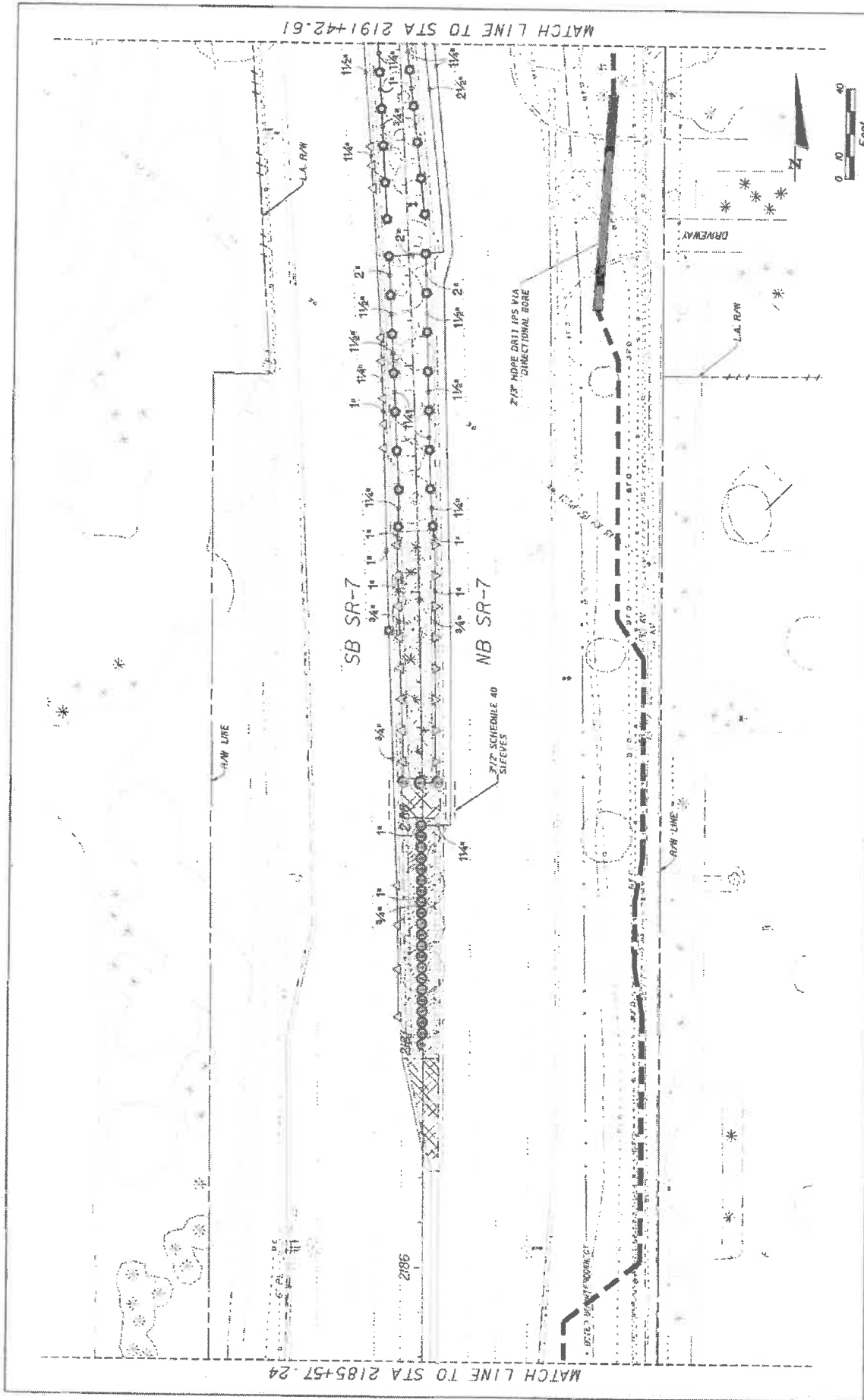


REVISIONS NO. DESCRIPTION		KS KEITH & SCHNARS A DIVISION OF KCI <small>INCORPORATED IN FLORIDA, A DIVISION OF KCI 14000 UNIVERSITY BLVD., SUITE 210, BOCA RATON, FL 33433 CONTRACT NO. 444935-1-74-01</small>		STATES OF FLORIDA DEPARTMENT OF TRANSPORTATION CITY OF COCONUT CREEK ROAD NO. 7 FINANCIAL PROJECT ID 444935-1-74-01	SHEET NO. LD-34
		COCONUT CREEK BUTTERFLY CAPITAL OF THE WORLD		IRRIGATION PLAN	

4/2/03 8:48 AM 2:\proj\444935-01\SR7\1031 Draw From 1000\Drawings\LD34.dwg



DATE	DESCRIPTION	REVISORS
KS KEITH & SCHNARS A DIVISION OF KCI <small>DESIGN, ENGINEERING AND ARCHITECTURE</small> <small>10001 W. UNIVERSITY BLVD., SUITE 100, BOCA RATON, FL 33433</small> <small>TEL: 561-995-1100 FAX: 561-995-1101</small>		
ROAD NO.	STATE OF FLORIDA DEPARTMENT OF TRANSPORTATION	SHEET NO.
7	CITY OF COCONUT CREEK	LD-35
PROJECT NO.	FINANCIAL PROJECT ID	
444935-1-74-01		
IRRIGATION PLAN		
<small>DATE PLOTTED: 08/03/09</small> <small>SCALE: 1"=40'</small>		

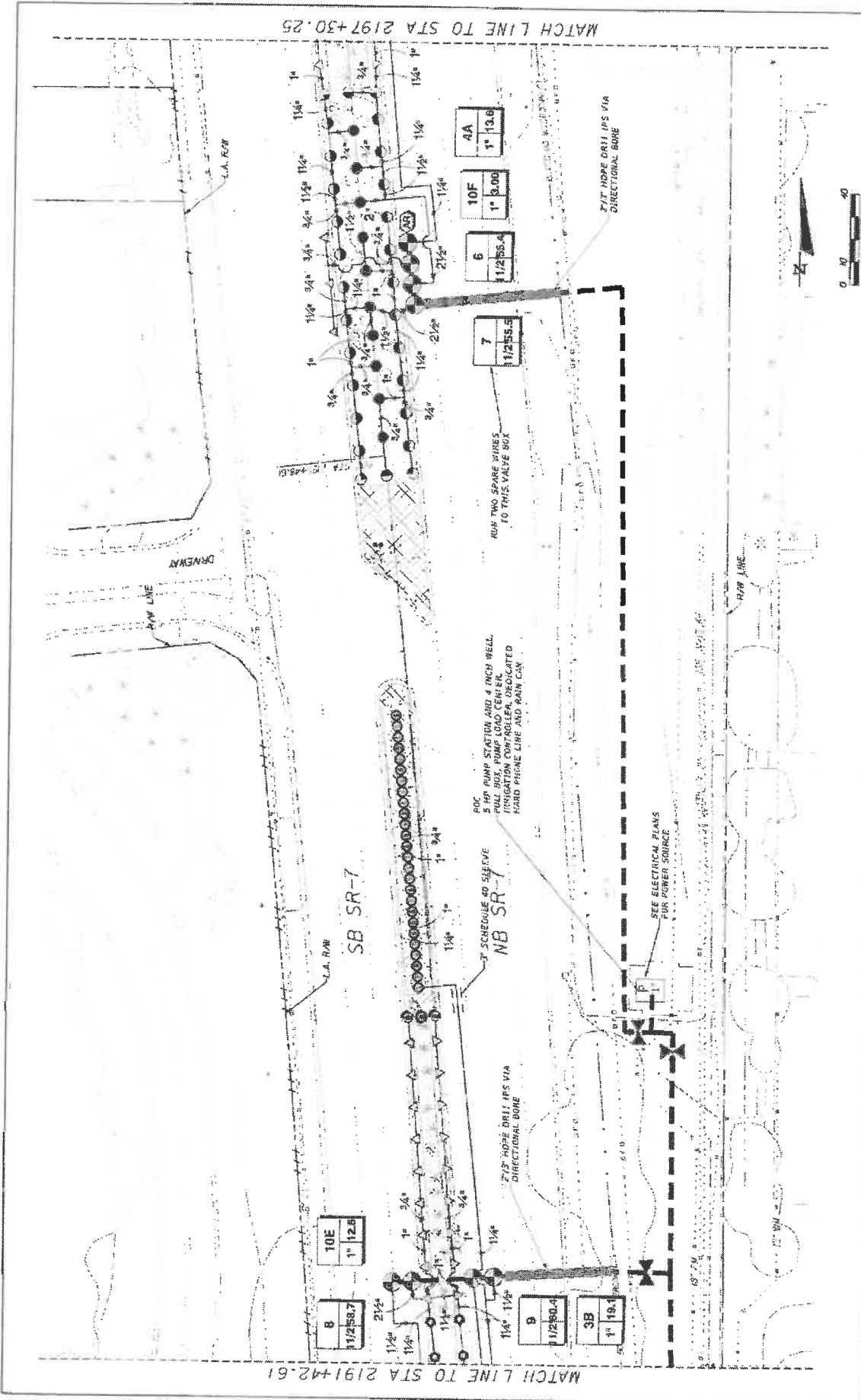


MATCH LINE TO STA 2185+57.24

MATCH LINE TO STA 2191+42.61

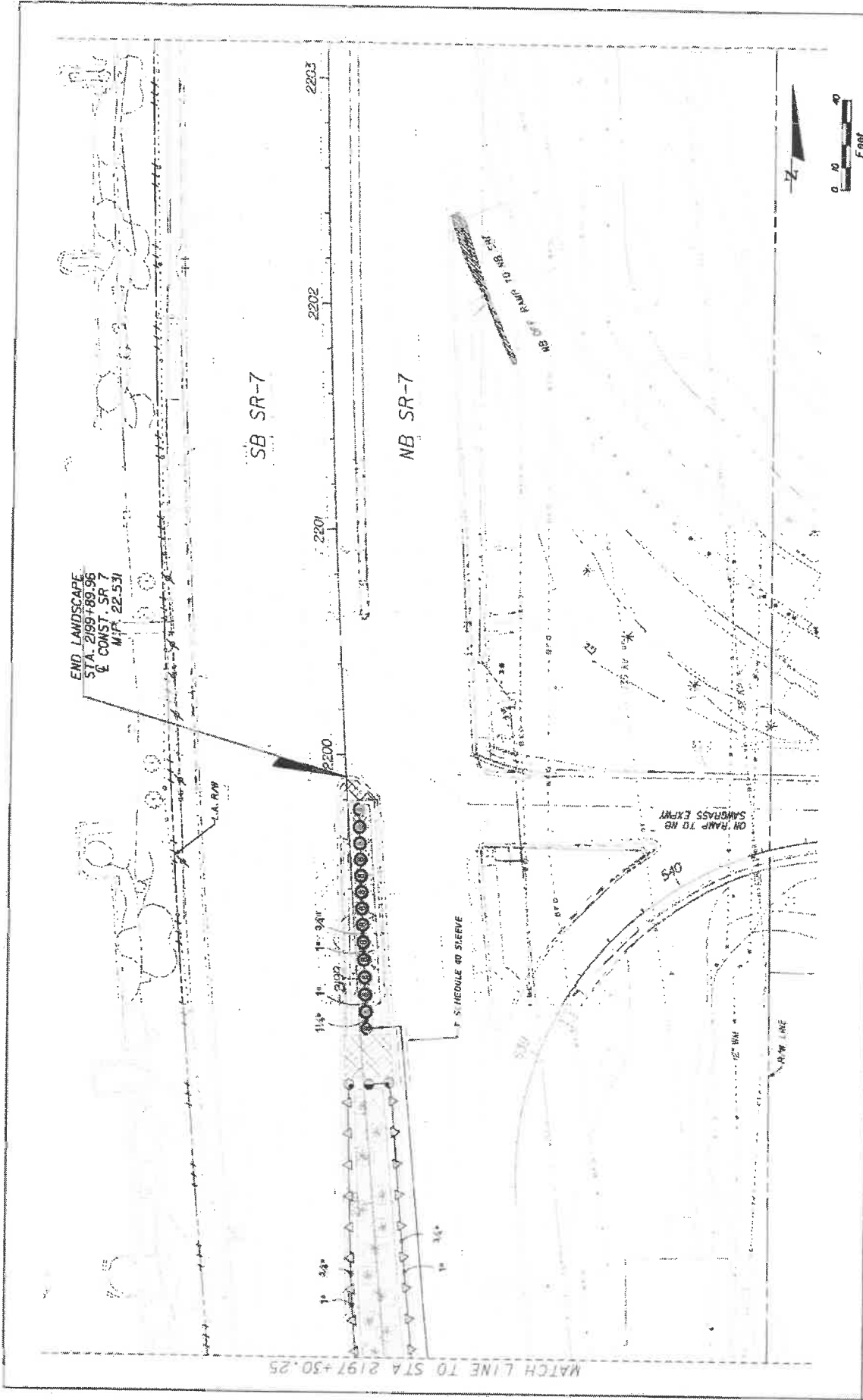


KS KEITH & SCHNARS IN A DIVISION OF KCI <small>800 N. UNIVERSITY AVENUE, SUITE 1000, TAMPA, FL 33606-5000 LICENSED PROFESSIONAL ENGINEERS - CIVIL, STATE OF FLORIDA #1237</small>	STATE OF FLORIDA DEPARTMENT OF TRANSPORTATION ROAD NO. 7 CITY OF COCONUT CREEK FINANCIAL PROJECT ID 444935-1-74-01	SHEET NO. LD-37
	Coconut Creek BUTTERNY CAPITAL OF THE WORLD	4/27/2006 4/27/2006 4/27/2006



REVISIONS NO. DESCRIPTION	KS KEITH & SCHNARS IN A DIVISION OF KCI <small>REGISTERED PROFESSIONAL ENGINEERS AND ARCHITECTS 1000 N. UNIVERSITY AVENUE, SUITE 1000, TAMPA, FL 33606 COUNTY OF HILLSBORO, FLORIDA</small>		STATE OF FLORIDA DEPARTMENT OF TRANSPORTATION	SHEET NO. LD-38
	ROAD NO. 7	CITY OR COUNTY COCONUT CREEK	FINANCIAL PROJECT ID 444935-1-74-01	IRRIGATION PLAN

DATE: 11/25/10
 DRAWN BY: J. W. BROWN
 CHECKED BY: J. W. BROWN



NO.	REVISIONS	DESCRIPTION



KS KELTH & SCHWARTZ
 A DIVISION OF KCI
INCORPORATED IN FLORIDA
 4000 W. UNIVERSITY BLVD., SUITE 200, BOCA RATON, FL 33433
 AND DEPARTMENT OF ADMINISTRATION #1317

STATE OF FLORIDA	DEPARTMENT OF TRANSPORTATION
CITY OF COCONUT CREEK	FINANCIAL PROJECT ID 446935-1-74-01
ROAD NO. 7	

IRRIGATION PLAN

SHEET NO.	LD-39
-----------	-------

PROJECT NOTES:

1. LANE CLOSURES SHALL OCCUR ONLY DURING NON-PEAK HOURS ON NON-EVENT DAYS/NIGHTS/WEEKENDS. NON-PEAK HOURS ARE: 9:00AM TO 4:00PM - WEEKDAYS AND WEEKENDS.
2. REGULATORY SPEED ESTABLISHED WITHIN THE WORK ZONE TRAVEL WAYS SHALL BE THE EXISTING POSTED SPEED.
3. THE TRAFFIC AND TRAVEL WAYS SHALL NOT BE ALTERED BY THE CONTRACTOR TO CREATE A WORK ZONE UNTIL ALL LABOR AND MATERIAL ARE ON-SITE AND AVAILABLE FOR THE CONSTRUCTION IN THAT AREA.

TCP PHASING NOTES:

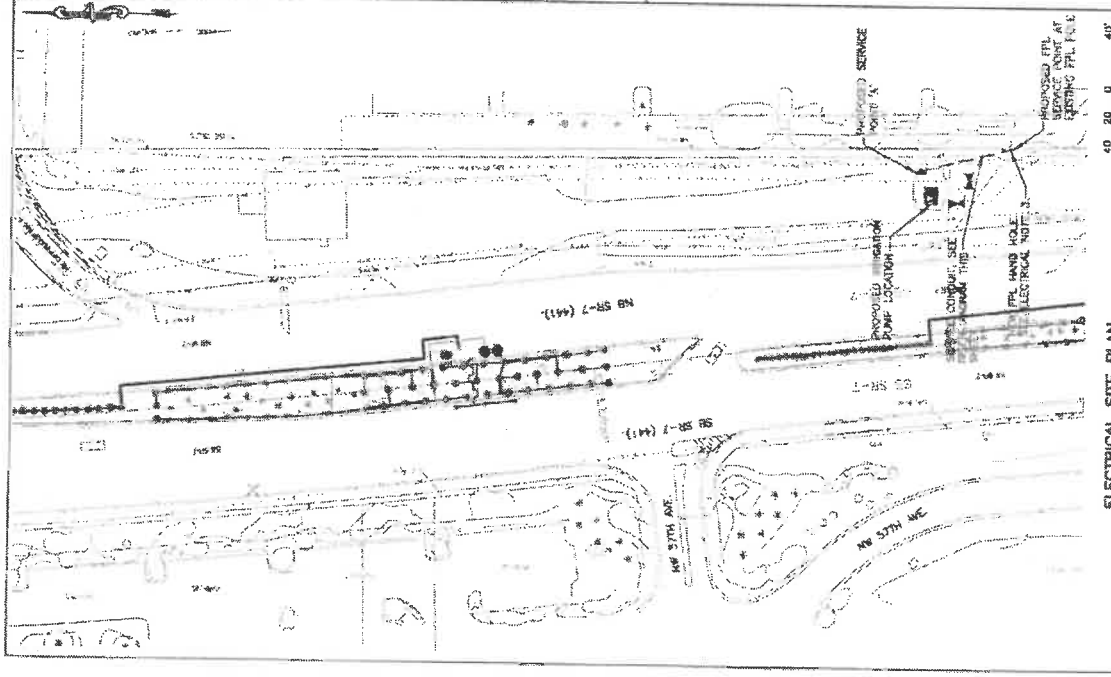
1. PHASE 1 WILL CLOSE LANES 1 BLOCK AT A TIME AND WILL BE REPEATED ALONG PROJECT LIMITS.

PHASE 1: SR 7 LANDSCAPE AND IRRIGATION

1. CLOSE 1 LANE IN EACH DIRECTION IN ACCORDANCE WITH FOOT STANDARD PLANS INDEXES 102-600, 102-613 AND 102-616.
2. PERFORM WORK AS SHOWN IN PLANS.
3. FOR INSTALLATION OF IRRIGATION SLEEVES/DIRECTIONAL BORES.
 - A) SIDE STREET CROSSINGS
 - DIRECTIONAL BORE USING STANDARD PLANS INDEX 102-611.
 - B) CROSSING SR-7, CROSSING OF MEDIUM OPENINGS
 - CLOSE 1 MEDIUM LANE IN EACH DIRECTION USING STANDARD PLANS INDEXES 102-600, 102-613 AND 102-616.
 - DIRECTIONAL BORE WILL BE COMPLETED USING STANDARD PLANS INDEX 102-611 FOR EQUIPMENT ON THE OUTSIDE OF SR-7.

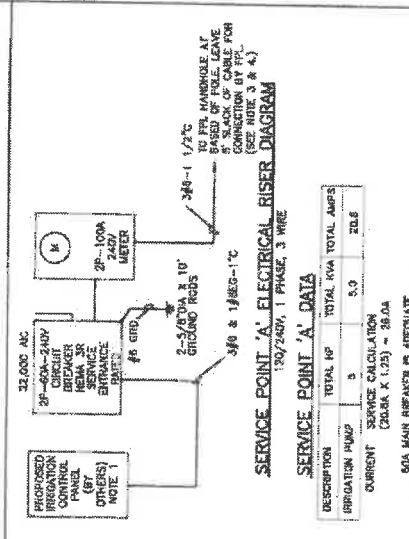
TCP NOTES

DATE	REVISIONS	DESCRIPTION	 <p>Coconut Creek BUTTERNY CAPITAL OF THE WORLD</p>	 <p>KS KEITH SCHNARS A DIVISION OF KCI 2500A BAYVIEW BLVD., SUITE 200 FORT LAUDERDALE, FL 33309 PHONE: 954.373.8800 FAX: 954.373.8801 CERTIFICATE OF AUTHORIZATION #1337</p>	STATE OF FLORIDA DEPARTMENT OF TRANSPORTATION ROAD NO. 7 CITY OF COCONUT CREEK BEAUTIFUL EXTERIOR GRANT 2018-2019 6/1/2019 456.0214 2:\proj\180626\04 SR 7 TCP\04 Plan\W04MFS\TCP\TCPNOTES.dwg	SHEET NO. LD-40



ELECTRICAL SITE PLAN
SCALE 1"=40'-0"

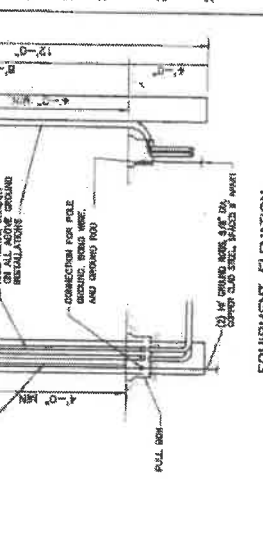
- ELECTRICAL NOTES:**
1. CONTRACTOR SHALL COORDINATE EXACT LOCATION OF CONTROL PANEL AND INSTALL CONDUIT AND WIRING AS NECESSARY FOR A COMPLETE WORKING SYSTEM IN PLACE.
 2. CONTRACTOR SHALL PROVIDE AND INSTALL CONDUIT AND WIRING AS NECESSARY FOR A COMPLETE WORKING SYSTEM IN PLACE. VISIT THE SITE AND INCLUDE IN ALL TRACING COST OR DIRECTIONAL, TYPICAL, BURNELL, READING, ETC. FOR THE INSTALLATION.
 3. CONTRACTOR SHALL INSTALL PFL PROVIDED HAND HOLES IN THE ROOT KEY PILING UP HAND HOLE AT PFL FACILITY AND DELIVERY TO THE SITE. INSTALL HAND HOLES AS PER PFL REQUIREMENTS.
 4. CONTRACTOR SHALL COORDINATE WITH PFL FOR EXACT LOCATION OF THE SERVICE POINT.



SERVICE POINT 'A' DATA

DESCRIPTION	TOTAL HP	TOTAL KW	TOTAL AMPS
IRRIGATION PUMP	5	5.0	20.8
CURRENT SERVICE CALCULATION (CALC X 1.25) = 26.0A			

60A MAIN BREAKER IS APPROPRIATE



EQUIPMENT ELEVATION
NOTE 1. X MINIMUM CLEARANCE IN FRONT OF ELECTRICAL EQUIPMENT & ALL WORKING SURFACES SHALL BE 36 INCHES MINIMUM.

- GENERAL NOTES AND SPECIFICATIONS:**
1. THE SCOPE OF WORK SHALL CONSIST PRIMARILY OF THE FOLLOWING:
 - A. PROVIDE AND INSTALL IRRIGATION PUMP OTHER COMPLETE.
 - B. PROVIDE AND INSTALL SITE CONDUIT AND WIRING.
 - C. PROVIDE AND INSTALL SERVICE POINT 'A' COMPLETE.
 2. THE CONTRACTOR SHALL COORDINATE ALL MATERIALS AND LABOR TO INSTALL THE ELECTRICAL SYSTEMS AS INDICATED ON THE DRAWINGS. ITEMS NOT SHOWN BUT OBVIOUSLY NECESSARY FOR COMPLETION OF THE WORK SHALL BE INCLUDED.
 3. THE INSTALLATION SHALL BE IN ACCORDANCE WITH THE 2014 NATIONAL ELECTRICAL CODE, 2017 FLORIDA BUILDING CODE (BFC) AND ALL LOCAL CODES.
 4. THE CONTRACTOR SHALL OBTAIN ALL NECESSARY PERMITS, INSPECTIONS AND APPROVALS AND TO COORDINATE HIS WORK WITH THE ENGINEER AND OWNER.
 5. THE CONTRACTOR SHALL, BEFORE SUBMITTING HIS BID, VISIT THE SITE OF THE PROJECT AND BE AWARE OF THE EXISTING CONDITIONS. NO ALLOWANCE WILL BE MADE FOR EXISTING CONDITIONS OR FAILURES OF THE CONTRACTOR TO REVEAL THEM.
 6. GROUNDING SHALL BE INSTALLED IN ACCORDANCE WITH NEC, ARTICLE 250. THE GROUNDING SYSTEM TO MEET THIS REQUIREMENT SHALL BE INSTALLED IN ACCORDANCE WITH THE FOLLOWING: ALL GROUNDING CONNECTIONS SHALL NOT BE PAINTED. ALL GROUNDING CONNECTIONS SHALL BE MADE TO THE UNLESS SPECIFICALLY INDICATED OTHERWISE. AN EQUIPMENT GROUND WIRE SIZED PER NEC SHALL BE INSTALLED IN ALL ELECTRICAL CONDUITS, POWER AND CONTROL, WHETHER OR NOT INDICATED ON THE PLANS.
 7. ALL EQUIPMENT AND MATERIAL SHALL BE NEW AND UNUSED AND U.L. LISTED.
 8. THE CONTRACTOR IS RESPONSIBLE TO TEST ALL DEVICES INSTALLED OR IDENTIFIED UNDER THIS PROJECT AND REPAIR OR REPLACE ALL DEFECTIVE WORK TO THE SATISFACTION OF THE ENGINEER AND OWNER.
 9. ALL EQUIPMENT FURNISHED AND INSTALLED BY THE CONTRACTOR SHALL BE GUARANTEED AGAINST DEFECTS IN MATERIAL AND WORKMANSHIP FOR A PERIOD OF ONE YEAR FROM DATE OF ACCEPTANCE.
 10. COORDINATE ALL ELECTRICAL EQUIPMENT LOCATIONS AND VERIFY ALL OBSTRUCTIONS WITH ALL SUBCONTRACTORS AND EQUIPMENT SUPPLIERS PRIOR TO ANY INSTALLATION.
 11. ALL REFERENCES TO A PARTICULAR MANUFACTURER ARE GIVEN ON AN "APPROVED EQUAL" BASIS.
 12. ALL EXCAVATIONS FOR CONDUITS AND HAND HOLES, NEAR EXISTING CONDUIT AND EQUIPMENT SHALL BE HAND EXCAVATED.
 13. URBAN CREEK FROM TOP OF DUCT BANKS OR CONDUITS TO FINISHED GRADE SHALL BE 24" UNLESS OTHERWISE NOTED.
 14. CONTRACTOR SHALL NOT EXCEED MANUFACTURER'S RECOMMENDATION. CONTRACTOR SHALL INSTALL PULL BOXES TO MEET MANUFACTURER'S REQUIREMENTS.
 15. PROVIDE CONDUIT DUCT SEAL AT ALL CONDUIT ENDS.
 16. ALL CONDUITS SHALL BE COPPER, THIN/THIN OR XHHW, 600 VOLT RATED. NO ALUMINUM ALLOWED UNLESS SPECIFICALLY INDICATED ON DRAWINGS.
 17. COLORED WARNING TAPE 8" WIDE SHALL BE INSTALLED 8" BELOW FINISHED GRADE DIRECTLY ABOVE ALL UNDERGROUND WAD CONDUITS ACCORDING TO THE FOLLOWING SCHEDULE:
 - ALL OTHER CONCRETE: GREEN
 18. ALL ELECTRICAL WIRING SHALL BE INSTALLED IN CONDUIT.
 19. ALL ABOVE GRADE CONDUIT SHALL BE RIG. SCHEDULE 40 RIG. C. SHALL BE USED UNDERGROUND. MINIMUM TRADE SIZE CONDUIT PERMITTED SHALL BE 3/4" INCH UNLESS OTHERWISE NOTED.
 20. ALL CONDUITS SHALL HAVE A SEPARATE GREEN GROUND CONDUCTOR INSTALLED FOR GROUNDING. WHETHER OR NOT INDICATED ON THE PLANS.
 21. SHOP DRAWINGS SHALL BE SUBMITTED FOR THE FOLLOWING EQUIPMENT: CONDUIT, WIRE, AND CIRCUIT BREAKER, DISCONNECT SWITCH.
 22. CONTRACTOR SHALL WITHIN 30 DAYS AFTER THE DATE OF THE SYSTEM ACCEPTANCE, PREPARE TO THE BUILDING OWNER RECORD DRAWINGS OF THE ACTUAL INSTALLATION INCLUDING A SINGLE LINE LOCATION AND RELATED DISTRIBUTION SYSTEM AND RELATED FLOOR PLANS INDICATING THE LOCATION AND AREA SERVED FOR THE DISTRIBUTION.
 23. CONTRACTOR SHALL PROVIDE TO THE BUILDING OWNER AN OPERATING AND MAINTENANCE MANUAL IN ACCORDANCE WITH THE REQUIREMENTS OF SECTION 605.04 OF THE 2017 FBC EDITION FLORIDA BUILDING CODE - ENERGY CONSERVATION, INCLUDING ANY AMENDMENTS THEREIN.
 24. CONTRACTOR SHALL COORDINATE WITH PFL AND CARRY WITH ALL OF THEIR REQUIREMENTS.

DATE: 08/20/2019

REVISIONS:

STATE OF FLORIDA
DEPARTMENT OF TRANSPORTATION
COUNTY: COCOONUT CREEK
ROAD: 7
2019-2019

KS KEITH & SCHNARS
A DIVISION OF KCI
6000 N. WINDY HILL BLVD. SUITE 100, PALM BEACH, FL 33410-1000
TEL: 561-833-1111 FAX: 561-833-1112

Coconut Creek
BUTTERFLY CAPITAL OF THE WORLD®

SEC South Florida Engineering Consultants, Inc.
1000 N. WINDY HILL BLVD., SUITE 100
PALM BEACH, FL 33410
PREPARED BY: PAUL BERRY

IRRIGATION PUMP ELECTRICAL PLAN

SHEET NO. LD-41

MAINTENANCE PLAN Landscape Improvements

Project State Road No(s): State Road 7 (US 441 from Cullum Road (M.P. 21.411) to Eastbound State Road 869 (Sawgrass Expressway) On Ramp (M.P. 22.531)
FM No(s): 444935-1-74-01
Maintaining Agency: City of Coconut Creek
RLA of Record: Todd Keane Mohler
Date: May 10, 2019

I. GENERAL MAINTENANCE REQUIREMENTS AND RECOMMENDATIONS:

The purpose of a plan for the landscape improvements maintenance practices is to allow the plant material on your project to thrive in a safe and vigorous manner while fulfilling their intended purpose and conserving our natural resources. Plantings and all other landscape improvements shall be maintained to avoid potential roadway hazards and to provide required clear visibility, accessibility, clearance, and setbacks as set forth by Florida Department of Transportation (FDOT) governing standards and specifications: *FDOT Design Standards, FDOT Plans Preparation Manual Vol. 1, Chapter 2.11* and *FDOT Standard Specifications for Road and Bridge Construction*, as amended by contract documents, and all other requirements set forth by the District 4 Operations Maintenance Engineer. The initial portion of the Maintenance Plan describes general maintenance requirements and recommendations. **The concluding section provides recommendations prepared by the Registered Landscape Architect of Record specific to the attached approved plans.**

WATERING REQUIREMENTS

Watering is a critical concern for not only the maintenance of healthy plant material but also for observing water conservation practices. The amount of water to apply at any one time varies with the weather, drainage conditions and water holding capacity of the soil. For plant materials that have been established, it is imperative that any mandated water restrictions be fully conformed to on FDOT roadways.

Proper watering techniques should provide even and thorough water dispersal to wet the entire root zone, but not saturate the soil or over-spray onto travel lanes.

IRRIGATION SYSTEM

The Agency shall ensure there are no roadway overspray or irrigation activities during daytime hours (most notably "rush hour" traffic periods). It is imperative the irrigation controller is properly set to run early enough that the watering process will be entirely completed before high traffic periods, while adhering to mandated water restrictions. To ensure water conservation, the Agency shall monitor the system for water leaks and the rain sensors to ensure they are functioning properly so that the system shuts down when there is sufficient rainfall.

INTEGRATED PLANT MANAGEMENT

An assessment of each planting area's soil is recommended to periodically determine the nutrient levels needed to sustain healthy, vigorous plant growth.

WEEDING/HERBICIDE

All planting areas shall be maintained as weed free as practicable by enlisting integrated pest management practices in areas specified on the plans and maintaining proper mulch levels. Extreme care is recommended when using a chemical herbicide to avoid overspray onto plant materials. It is the applicator's responsibility to restore any damage resulting from overspray to the plantings, per the approved plans.

PLANT REPLACEMENT

Plant replacement shall be the same species and specification as the approved plan. Move and replace all plant materials that may conflict with utility relocations and service. Only plants graded Florida #1 or better, per the *Florida Department of Agriculture and Consumer Services, Grades and Standards for Nursery Plants* are permitted on FDOT roadways. Should it become necessary to change the species, a permit is required from FDOT for approval by the FDOT District Landscape Architect.

HARDSCAPE (SPECIALTY SURFACING)

All tree grates and specialty surfacing (if applicable) shall be maintained in such a manner as to prevent any potential tripping hazards and protect damage to the surfacing and tree grates. Final surface tolerance from grade elevations shall, at a minimum, meet the most current FDOT Maintenance Rating Program Handbook Pages 43-47; ADA accessible sidewalk; and FDOT Design Standards for Design, Construction, Maintenance and Utility Operations on The State Highway System. If the specialty surfacing or tree grates become damaged, they shall be replaced with the same type and specification as the approved plan.

HARDSCAPE (CONCRETE PAVERS)

All tree grates and concrete pavers (if applicable) shall be maintained in such a manner as to prevent any potential tripping hazards and protect damage to the pavers and tree grates. Final surface tolerance from grade elevations shall, at a minimum, meet the most current *Interlocking Concrete Pavement Institute (ICPI), Guide Specifications for Pavers on an Aggregate Base, Section 23 14 13 Interlocking Concrete Pavers, Part 3.05*. If the specialty surfacing or tree grates become damaged, they shall be replaced with the same type and specification as the approved plan.

It shall be the responsibility of the AGENCY to maintain all signs located within a non-standard surfacing area. Such maintenance to be provided by the AGENCY shall include repair and replacement of the sign panel, post, and base.

HARDSCAPE (NON-STANDARD) TRAVELWAY SURFACING

It shall be the responsibility of the AGENCY to restore an unacceptable ride condition of the roadway, including asphalt pavement (if applicable), caused or contributed by the installation or failure of non-standard surfacing, and/or the header curb, on the Department of Transportation right of way within the limits of this Agreement. Pavement restoration areas or "patches" will have a minimum length of 10-ft, measured from the edge of the header curb, and a width to cover full lanes for each lane affected by the restoration.

Pavement restoration will be performed in accordance with the most current edition of the *FDOT Standard Specifications for Road and Bridge Construction*, and the *FDOT Design Standards for Design, Construction, Maintenance and Utility Operations on the State Highway System*.

SECTION No.(s): 86100000
S.R. No.(s): 7
FM No: 444935-1-74-01
COUNTY: BROWARD

EXHIBIT D

APPROXIMATE COST FOR LANDSCAPE IMPROVEMENTS

This Exhibit forms an integral part of the DISTRICT FOUR (4) LANDSCAPE MAINTENANCE MEMORANDUM OF AGREEMENT between the State of Florida, Department of Transportation and the AGENCY.

Anticipated Terms of a Separate Agreement

I.	FDOT PARTICIPATION: Via Separate Agreement	\$100,000.00
	AGENCY PARTICIPATION:	\$ 500,000.00
II.	APPROXIMATE LANDSCAPE IMPROVEMENT COST: Amounts are approximate	\$ 600,000.00

Please see attached

COST ESTIMATE:

2019 Florida Highway Beautification Council Grant

City of Coconut Creek - SR7/US441

FM# 444935-1-74-01

5/9/2019

KEY	QTY	SCIENTIFIC NAME	COMMON NAME	SIZE	UNIT COST	SUBTOTAL
SHRUBS						
IV	184	ILEX VOMITORIA 'STOKES DWARF'	DWARF YAUPON HOLLY	3G, 12 IN HT X 12 IN SPR, 24 IN O.C.	\$32.00	\$5,888.00
CI	642	CHRYSOBALANUS ICACO 'HORIZONTALIS'	HORIZONTAL COCOPLUM	3G, 18 IN HT X 9 IN SPR, 24 IN O.C.	\$28.00	\$17,976.00
TJ	741	TRACHELOSPERMUM JASMINOIDES	CONFEDERATE JASMINE	3G 18 IN HT X 9 IN SPR, 24 IN O.C.	\$8.00	\$5,928.00
TREES						
BA	3	BULNESIA ARBOREA	VERAWOOD TREE	45G 10 FT HT 5 FT SPR, 2.5 IN	\$360.00	\$1,080.00
LS	8	LAGERSTROEMIA SPECIOSA	QUEEN'S CRAPE MYRTLE	10 FT HT X 6 FT SPR, 2 IN, STD	\$900.00	\$7,200.00
QV	10	QUERCUS VIRGINIANA	SOUTHERN LIVE OAK	14 FT HT X 7 FT SPR, 3-4 IN	\$1,300.00	\$13,000.00
SP	10	SABAL PALMETTO	SABAL PALM	12 - 24 FT, O.A., BOOTED	\$320.00	\$3,200.00
SPR	2	SABAL PALMETTO - RELOCATED	RELOCATED SABAL PALM		\$350.00	\$700.00
PE	20	PTYCHOSPERMA ELEGANS	SOLITAIRE PALM	5 FT CT, 10 FT CT, MATCHED, 4 IN	\$192.00	\$3,840.00
SOD						
SA	18,718	STENOTAPHRUM SECUNDATUM	ST. AUGUSTINE GRASS	SQUARE FOOT	\$0.60	\$11,230.80
MULCH						
	1,200		RED MULCH	CUBIC YARDS	\$24.00	\$28,800.00
PAVERS						
	7,980		CONCRETE PAVERS, 8 IN X 8 IN	SQUARE FOOT	\$10.00	\$79,800.00
IRRIGATION						LANDSCAPE TOTAL: \$178,642.80
	1	IRRIGATION SYSTEM, COMPLETE - PER PLANS			\$279,357.20	\$279,357.20
SITE WORK & MISC.						
		DEMOLITION / CLEARING				\$10,000.00
		MOBILIZATION				\$36,000.00
		MAINTENANCE OF TRAFFIC				\$36,000.00
		TREE REMOVALS				\$10,000.00
		CONTINGENCY				\$50,000.00

GRAND TOTAL: \$600,000.00

RESOLUTION NO. 2018-173

A RESOLUTION OF THE CITY COMMISSION OF THE CITY OF COCONUT CREEK, FLORIDA AUTHORIZING THE CITY MANAGER, OR DESIGNEE, TO APPLY FOR AND ACCEPT HIGHWAY BEAUTIFICATION GRANT FUNDING IN THE AMOUNT OF \$100,000 FROM THE FLORIDA DEPARTMENT OF TRANSPORTATION (FDOT) AND TO EXECUTE A LANDSCAPE CONSTRUCTION AND MAINTENANCE AGREEMENT WITH FDOT FOR THE PURPOSE OF PROVIDING LANDSCAPE AND IRRIGATION IMPROVEMENTS ON THE MEDIANS ALONG STATE ROAD 7, BETWEEN THE SAWGRASS EXPRESSWAY AND CULLUM ROAD; PROVIDING FOR SEVERABILITY; AND PROVIDING AN EFFECTIVE DATE.

WHEREAS, the Florida Department of Transportation (FDOT) Highway Beautification Grant Program offers the City an opportunity to apply for grant funding for landscape beautification projects on State roadways; and

WHEREAS, a proposed Capital Improvement Program (CIP) project, entitled "State Road 7 Median Beautification," has been submitted for approval in the Fiscal Year 2019 Budget; and

WHEREAS, staff is recommending that the City pursue the aforementioned grant for the purpose of providing landscape and irrigation improvements to the medians along State Road 7, between the Sawgrass Expressway and Cullum Road; and

WHEREAS, the City of Coral Springs has agreed to pay for 50% of the ongoing costs of maintenance of this project; and

WHEREAS, the City Commission of the City of Coconut Creek believes it is in the best interest of the City to pursue the FDOT Highway Beautification Grant in the amount of \$100,000 for the purpose of making landscape and irrigation beautification improvements within the median rights-of-way on State Road 7 from the Sawgrass Expressway to Cullum Road.

NOW, THEREFORE, BE IT RESOLVED BY THE CITY COMMISSION OF THE CITY OF COCONUT CREEK, FLORIDA:

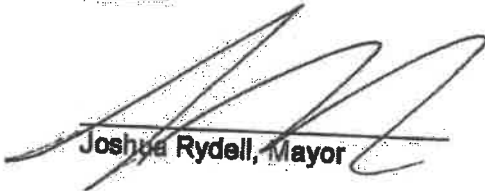
Section 1: That the foregoing "WHEREAS" clauses are hereby ratified and confirmed as being true and correct and are hereby made a specific part of this Resolution.

Section 2: That the City Commission hereby authorizes the City Manager, or designee, to apply for a Highway Beautification Grant in the amount of \$100,000 from the Florida Department of Transportation, and if awarded, to accept the grant, and enter into a Beautification Grant, Landscape Construction, and Maintenance Memorandum of Agreement between the Florida Department of Transportation and the City of Coconut Creek.

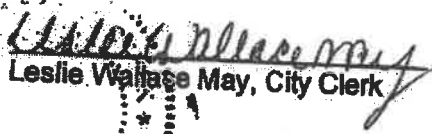
Section 3: That if any clause, section, other part or application of this Resolution is held by any court of competent jurisdiction to be unconstitutional or invalid, in part or in application, it shall not affect the validity of the remaining portion or applications of this Resolution.

Section 4: That this Resolution shall be in full force and effect immediately upon its adoption.

Adopted this 13th day of September, 2018.


Joshua Rydell, Mayor

Attest:


Leslie Wallace May, City Clerk



Rydell	<u>Aye</u>
Welch	<u>Aye</u>
Tooley	<u>Aye</u>
Sarbone	<u>Aye</u>
Belvedere	<u>Aye</u>