

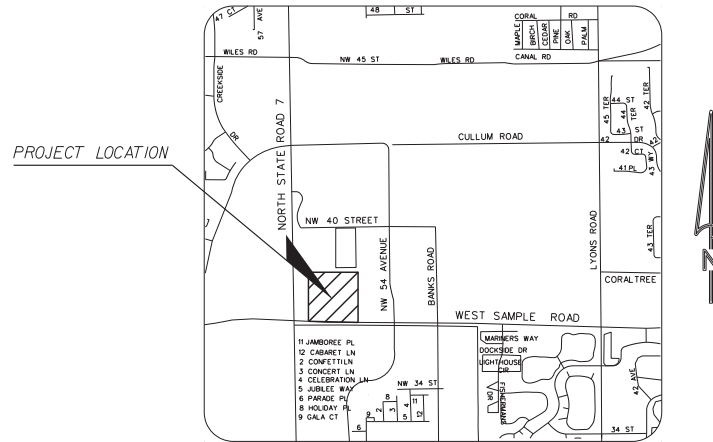
INFINITI OF COCONUT CREEK

CITY OF COCONUT CREEK, BROWARD COUNTY, FLORIDA

TT OF SAMPLE, INC.

INDEX OF PLANS

SHEET NO.	SHEET DESCRIPTION
CS-1	COVER SHEET
SP-1	SITE PLAN
S-1	SURVEY
A-1.0	SITE SCOPE AND ENLARGED AREA PLANS
A-1.1	SERVICE SHOP AND CAR WASH ADDITION ENLARGED PLANS
A-1.2	PHOTO BOOTH AND EXISTING SHOP RENOVATION ENLARGED PLAN
A-2.0	BUILDING ELEVATIONS
A-3.0	ROOF PLAN
L-1	LANDSCAPE INDEX
L-2	LANDSCAPE PLAN
L-3	LANDSCAPE PLAN
L-4	LANDSCAPE DETAILS
L-5	LANDSCAPE DETAILS
TD-1	TREE DISPOSITION INDEX
TD-2	TREE DISPOSITION PLAN
TD-3	TREE DISPOSITION PLAN
TD-4	TREE DISPOSITION PLAN
CE-1	CONCEPTUAL ENGINEERING PLAN
CE-2	CONCEPTUAL ENGINEERING DETAILS
DM-1	DEMOLITION PLAN
PH-1	PHOTOMETRICS PLAN
TA-1	TRUCK ACCESS ROUTE



PROJECT LOCATION



LOCATION MAP

SECTION 18 / TOWNSHIP 48 S / RANGE 42 E

SITE PLAN

LEGAL DESCRIPTION:

A PORTION OF TRACT B OF THE COMMERCE CENTER OF COCONUT CREEK PLAT AS RECORDED IN PLAT BOOK 131, PAGE 30 OF THE BCR.

DEVELOPER:

TT OF SAMPLE, INC.
505 S. FLAGLER DRIVE
SUITE 700
WEST PALM BEACH, FL 33401
(561) 655-8900

PLANNER:

HSQ GROUP, INC.
1489 WEST PALMETTO PARK ROAD
SUITE 340
BOCA RATON, FL 33486
(561) 392-0221

ARCHITECT:

ROBERT REID WEDDING
ARCHITECTS & PLANNERS,
AIA, INC.
612 S. MILITARY TRAIL
DEERFIELD BEACH, FL 33442
(954) 428-9361

CIVIL ENGINEER:

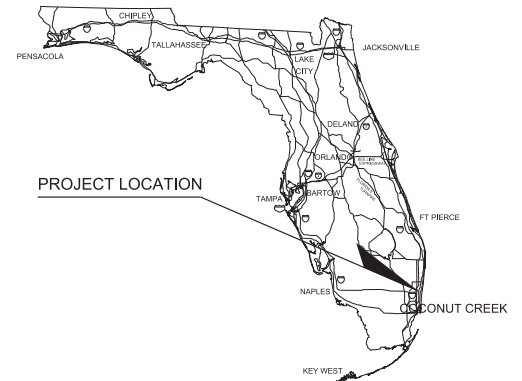
HSQ GROUP, INC.
1489 WEST PALMETTO PARK ROAD
SUITE 340
BOCA RATON, FL 33486
(561) 392-0221

LANDSCAPE ARCHITECT:

WITKIN HULTS DESIGN GROUP
307 S. 21ST AVENUE
HOLLYWOOD, FL 33020
(954)923-9681

SURVEYOR:

HSQ GROUP, INC.
1489 WEST PALMETTO PARK ROAD
SUITE 340
BOCA RATON, FL 33486
(561) 392-0221



PROJECT LOCATION



HSQ GROUP, INC.

Engineers · Planners · Surveyors

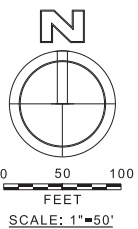
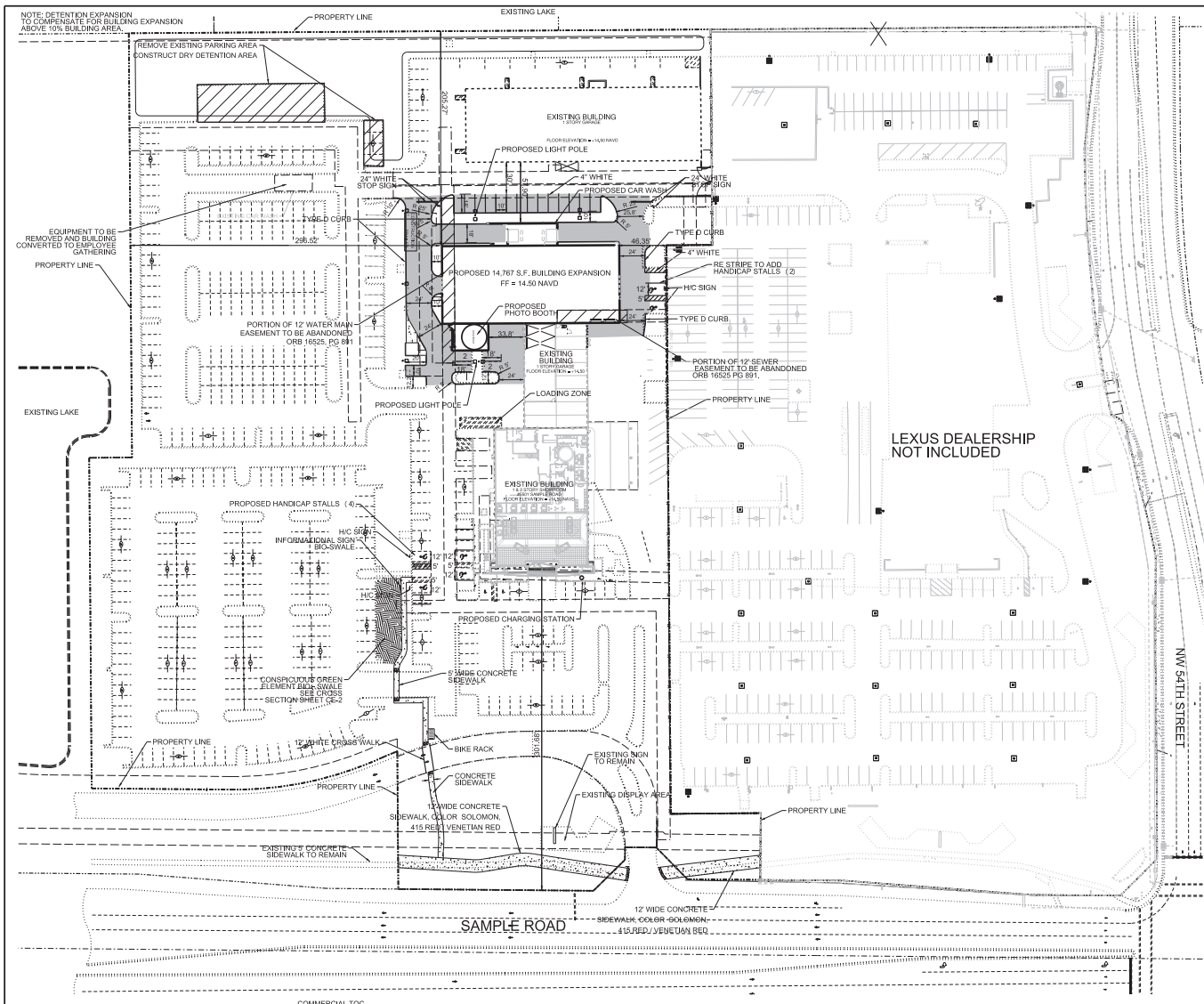
1489 West Palmetto Park Road, Suite 340
Boca Raton, Florida 33486 · 561.392.0221
CA26258 · LB7924

ENGINEER'S CERTIFICATION
THESE PLANS WERE PREPARED UNDER MY DIRECTION AND TO THE BEST OF MY KNOWLEDGE AND BELIEF COMPLY WITH THE INTENT OF THE MANUAL OF UNIFORM MINIMUM STANDARDS FOR DESIGN, CONSTRUCTION AND MAINTENANCE FOR STREETS AND HIGHWAYS AS ADOPTED BY THE STATE OF FLORIDA LEGISLATURE, CHAPTER 72-528 F.S.

Date: 08/18/16	Seal
Approved by: JAY HUEBNER	
Registered Engineer Number: 54615	
State of Florida	

08/18/16

08/18/16



- LEGEND**
- LIGHT POLE
 - FPL TRANSFORMER
 - HANDICAP STALL
 - SIGN
 - PERVIOUS SIDEWALK
 - CONCRETE SIDEWALK
 - PROPOSED PAVEMENT

SITE DATA TABLE		
LAND USE CLASSIFICATION: COMMERCIAL		
ZONING CLASSIFICATION: B-4 TO PMDD		
SITE AREA: EXISTING: PROPOSED:		
BUILDINGS:	33,846 S.F., 0.777 AC.	48,613 S.F., 1.116 AC., 11.5%
PAVEMENT AREAS:	253,301 S.F., 5.815 AC.	233,247 S.F., 5.355 AC., 55.4%
GREEN AREAS:	134,122 S.F., 3.079 AC.	139,409 S.F., 3.20 AC., 33.1%
TOTAL AREA:	421,269 S.F., 9.671 AC.	421,269 S.F., 9.671 AC., 100.0%
		PERVIOUS AREA: 139,409 S.F. (33%)
		IMPERVIOUS AREA: 281,860 S.F. (67%)
		FAR: 0.12
LEGAL DESCRIPTION:		
A PORTION OF TRACT "B", "COMMERCE CENTER OF COCONUT CREEK", ACCORDING TO THE PLAT THEREOF, AS RECORDED IN PLAT BOOK 131, AT PAGE 30, OF THE PUBLIC RECORDS OF BROWARD COUNTY, FLORIDA.		
UTILITY COMPANY INFORMATION:		
POTABLE WATER SERVICE:	COCONUT CREEK UTILITIES	
SANITARY SEWER SERVICE:	COCONUT CREEK UTILITIES	
STORMWATER MANAGEMENT:	S.F.W.M.D. & B.C.E.P.D.	
TELEPHONE SERVICE:	BELLSOUTH	
ELECTRICAL SERVICE:	FLORIDA POWER & LIGHT COMPANY	
SOLID WASTE PICKUP:	WASTE MANAGEMENT, INC.	

PARKING DATA TABLE	
EXISTING PARKING COUNT:	
CUSTOMER SPACES:	165 SPACES
INVENTORY SPACES:	376 SPACES
REVISED PARKING COUNT:	
SHOWROOM OFFICE SPACE 11,817 S.F./200	59 SPACES
AUTO REPAIR SPACE 38,798 S.F./150	245 SPACES
REQUIRED HANDICAP STALLS (8)	
INDOOR SERVICE BAYS:	62 SERVICE BAY SPACES
CUSTOMER/EMPLOYEE SPACES:	242 SPACES
INVENTORY SPACES:	198 SPACES

NO.	DATE	BY	REVISIONS	NO.	DATE	BY	REVISIONS
1	2/20/17	JMH	REVISE PER DRC COMMENTS				

Designed by: JH Date: 3/16
 Drawn by: AZ Date: 3/16
 Checked by: JH Date: 3/16



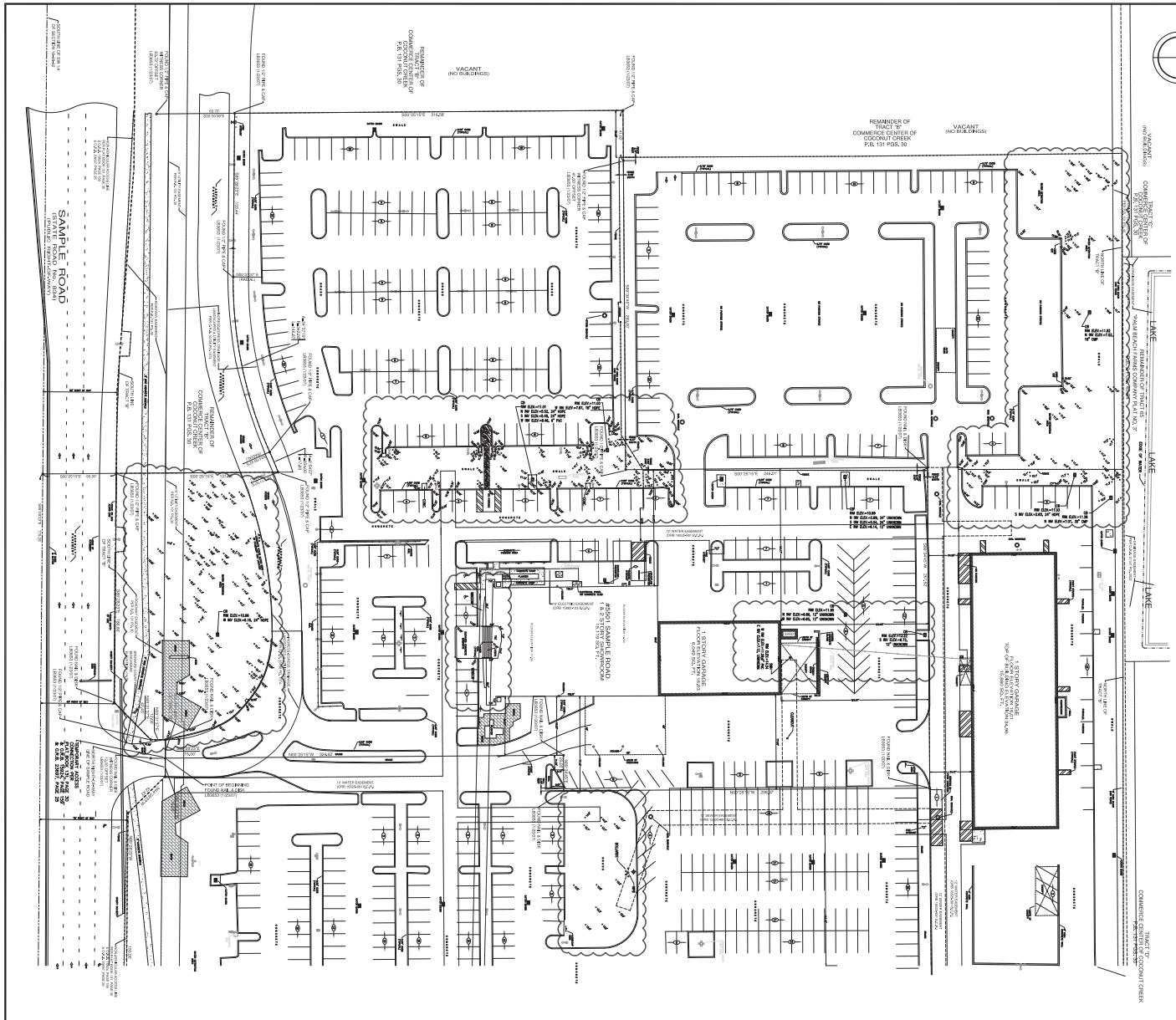
HSQ GROUP, INC.
 Engineers · Planners · Surveyors
 1489 West Palmetto Park Road, Suite 340
 Boca Raton, Florida 33486 · 561.392.0221
 C295293 · LB7924

INFINITI OF COCONUT CREEK
 SITE PLAN

SCALE:
 1" = 50'
 PROJECT NUMBER:
 1604-27
 SHEET NUMBER:
 SP-1

Date: 02/12/17
 Approved by: JH (REGISTERED P.E.)
 Registered Engineer No.: 55816
 State of Florida

2/20/2017 10:52:42 - g:\mcafee\mcafee\pdm\160427\04.dwg



LEGAL DESCRIPTION

A PORTION OF TRACT "B", COMMERCE CENTER OF COCONUT CREEK, ACCORDING TO THE PLAT THEREOF, AS RECORDED IN PLAT BOOK 133, AT PAGE 30, OF THE PUBLIC RECORDS OF BROWARD COUNTY, FLORIDA, BEING MORE PARTICULARLY DESCRIBED AS FOLLOWS:

COMMENCE AT THE NORTHEAST CORNER OF SAID TRACT "B", THENCE SOUTH 02°25'15" EAST ALONG THE EASTERLY BOUNDARY LINE OF SAID TRACT "B" FOR 16.68 FEET; THENCE SOUTH 62°25'15" WEST FOR 100.72 FEET; THENCE SOUTH 02°25'15" EAST FOR 0.42 FEET TO A POINT OF CURVATURE; THENCE SOUTHWESTERLY ALONG A CIRCULAR CURVE TO THE LEFT, HAVING A RADIUS OF 130.00 FEET AND CENTRAL ANGLE OF 123°14'47" FOR AN ARC DISTANCE OF 255.82 FEET TO A POINT OF A CURVE; (SAID POINT BEARS NORTH 20°11'11" EAST FROM THE RADIIUS POINT OF THE NEXT DESCRIBED CURVE); THENCE SOUTHWESTERLY ALONG A CIRCULAR CURVE TO THE RIGHT, HAVING A RADIUS OF 40.00 FEET AND A CENTRAL ANGLE OF 23°41'21" FOR AN ARC DISTANCE OF 16.54 FEET TO A POINT ON A CURVE (SAID POINT BEARS SOUTH 79°25'10" WEST FROM THE RADIIUS POINT OF THE NEXT DESCRIBED CURVE); THENCE SOUTHWESTERLY ALONG A CIRCULAR CURVE TO THE LEFT, HAVING A RADIUS OF 130.00 FEET AND A CENTRAL ANGLE OF 31°11'11" FOR AN ARC DISTANCE OF 78.89 FEET TO A POINT OF REVERSE CURVATURE; THENCE SOUTHWESTERLY ALONG A CIRCULAR CURVE TO THE RIGHT, HAVING A RADIUS OF 20.00 FEET AND A CENTRAL ANGLE OF 4°04'45" FOR AN ARC DISTANCE OF 51.25 FEET; THENCE SOUTH 01°15'05" WEST FOR 100.00 FEET TO A POINT ON A CURVE (SAID POINT BEARS NORTH 87°21'46" EAST FROM THE RADIIUS POINT OF THE NEXT DESCRIBED CURVE); THENCE SOUTHWESTERLY ALONG A CIRCULAR CURVE TO THE RIGHT, HAVING A RADIUS OF 70.00 FEET AND A CENTRAL ANGLE OF 27°22'09" FOR AN ARC DISTANCE OF 27.38 FEET TO A POINT OF TANGENCY; THENCE SOUTH 02°25'15" EAST FOR 162.62 FEET; THENCE SOUTH 45°03'11" WEST FOR 49.81 FEET; THENCE NORTH 89°28'23" WEST ALONG A LINE PARALLEL WITH AND 40.00 FEET NORTH OF, AS MEASURED AT RIGHT ANGLES TO, THE SOUTHERN LINE OF THE SOUTHWEST 1/4 OF SECTION 18, TOWNSHIP 48 SOUTH, RANGE 42 EAST, AS SHOWN ON THE PLAT OF COMMERCE CENTER OF COCONUT CREEK, FOR 15.00 FEET TO THE POINT OF BEGINNING OF THE HEREINAFTER DESCRIBED PARCEL OF LAND; (THE LAST MENTIONED ELEVEN COURSES BEING CONCORDANT WITH THE EASTERLY AND SOUTHERLY BOUNDARY LINES OF SAID TRACT "B"); THENCE NORTH 02°25'15" WEST FOR 324.42 FEET; THENCE NORTH 89°28'23" WEST FOR 29.00 FEET; THENCE NORTH 02°25'15" WEST FOR 298.37 FEET; THENCE SOUTH 89°28'23" WEST FOR 281.52 FEET; THENCE SOUTH 02°25'15" EAST FOR 246.01 FEET; THENCE SOUTH 89°28'23" WEST FOR 293.00 FEET; THENCE SOUTH 02°25'15" EAST FOR 316.58 FEET; THENCE SOUTH 89°28'23" EAST FOR 133.44 FEET TO A POINT OF CURVATURE; THENCE EASTERLY ALONG A 340.00 FOOT RADIUS CURVE, LEADING TO THE LEFT, THROUGH A CENTRAL ANGLE OF 243°17'19" FOR AN ARC DISTANCE OF 146.97 FEET TO A POINT OF REVERSE CURVATURE; THENCE NORTHEASTERLY ALONG A 354.00 FOOT RADIUS CURVE, LEADING TO THE RIGHT, THROUGH A CENTRAL ANGLE OF 255°07'07" FOR AN ARC DISTANCE OF 17.83 FEET TO A POINT ON A NON-TANGENT LINE; THENCE SOUTH 02°25'15" EAST FOR 133.88 FEET TO A POINT ON SAID SOUTHERLY BOUNDARY LINE OF TRACT "B"; THE FOLLOWING FOUR COURSES BEING CONCORDANT WITH SAID SOUTHERLY BOUNDARY LINE: 1) THENCE SOUTH 89°28'23" EAST FOR 18.88 FEET; 2) THENCE NORTH 85°13'37" EAST FOR 42.43 FEET; 3) THENCE NORTH 03°13'37" EAST FOR 12.00 FEET; 4) THENCE SOUTH 89°28'23" EAST FOR 15.00 FEET TO THE POINT OF BEGINNING.

SAID LANDS SITUATE IN THE CITY OF COCONUT CREEK, BROWARD COUNTY, FLORIDA.

NOTES:

1. THIS DRAWING IS NOT VALID WITHOUT THE SIGNATURE AND THE ORIGINAL BASED SEAL OF A FLORIDA LICENSED SURVEYOR AND MAPPER.
2. ALL ELEVATIONS SHOWN HEREON ARE PER THE RECORD PLATES UNLESS OTHERWISE INDICATED.
3. RECORDING INFORMATION REFERS TO BROWARD COUNTY PUBLIC RECORDS UNLESS OTHERWISE INDICATED.
4. ELEVATIONS SHOWN HEREON ARE RELATIVE TO THE NORTH AMERICAN VERTICAL DATUM OF 1988 (NAVD83) AND WERE DETERMINED FROM FLORIDA DEPARTMENT OF TRANSPORTATION BENCHMARK 077, BEING A BRASS DISC IN CONCRETE AS SHOWN ON THE PROJECT NETWORK CONTROL PROJECT #148878-1-52-01, ELEVATION: 14.38.
5. PROPERTY ADDRESS: 5501 SAMPLE ROAD, COCONUT CREEK, FLORIDA.
6. THE SPECIFIC PURPOSE OF THIS SURVEY IS TO DETERMINE THE TOPOGRAPHY AND IMPROVEMENTS LOCATED WITHIN THE CLOUDED AREAS.

ABBREVIATIONS:

- A = ARC LENGTH
- A/C = AIR CONDITIONER
- ALUM = ALUMINUM
- BR = BROWARD COUNTY RECORDS
- BTM = BOTTOM
- BRO = BROOK
- CB = CATCH BASIN
- CBS = CONCRETE BLOCK & STUCCO
- CLF = CHAIN LINK FENCE
- CP = CORRUGATED METAL PIPE
- CONC = CONCRETE
- CO = CORNER (CENTRAL ANGLE)
- EL = ELEVATION
- FA = FINISHED FLOOR
- FP = FOUND IRON PIPE
- FR/C = FOUND IRON ROD W/ CAP
- FR = FOUND IRON ROD
- FND = FOUND
- ICV = IRIGATION CONTROL VALVE
- IRV = IRRIE
- L/S = LANDSCAPE BUFFER
- MAL = MANHOLE
- M/D = MAIL BOX DISC
- P.B. = PLAT BOOK
- P.B.C. = PLAT BOOK COUNTY RECORDS
- PC = FACE
- R = RADIUS
- R/W = RIGHT-OF-WAY
- SE = SET 1/2" IRON ROD W/ CAP LTR204
- SM = SANITARY SEWER MANHOLE
- SMV = SET MAIL BOX DISC LTR204
- SQ = SQUARE
- S/S = SIGN
- TCS = TRAFFIC CONTROL BOX
- TYF = TRAFFIC YIELD
- U.E. = UTILITY EASEMENT
- WV = WIRE PLAT BOOK
- WV = WATER VALVE

LEGEND:

- BACKFLOW PREVENTER
- BOLLARD
- CABLE BOX
- CATCH BASIN
- CENTERLINE
- CLEARWOT
- ELEVATION
- FIRE HYDRANT
- MANHOLE, DRAINAGE
- MANHOLE, SANITARY
- NON-VEHICULAR ACCESS LINE
- POLE, LIGHT
- POLE, WOOD
- SIGN
- TREE
- VALVE, WATER
- WATER METER
- WHEEL, OVERHEAD

SURVEYOR'S CERTIFICATION:

I HEREBY CERTIFY THAT THE SURVEY SHOWN HEREON MEETS THE STANDARDS OF PRACTICE CONTAINED IN CHAPTER 5A-17 OF THE FLORIDA ADMINISTRATIVE CODE PURSUANT TO CHAPTER 472.022, FLORIDA STATUTES.

DANIEL C. LAWK
 PROFESSIONAL SURVEYOR AND MAPPER
 FLORIDA REGISTRATION NO. LS5118

LAST DATE OF FIELD SURVEY: 11/28/16

NO.	DATE	BY	OK'D	REVISIONS	FBPG

SCALE: 1"=40' DATE: 12/02/16

DRAWN BY: JDV FIELD BOOK: 37/33

CHECKED BY: DCL SURVEY TYPE: SPECIFIC PURPOSE

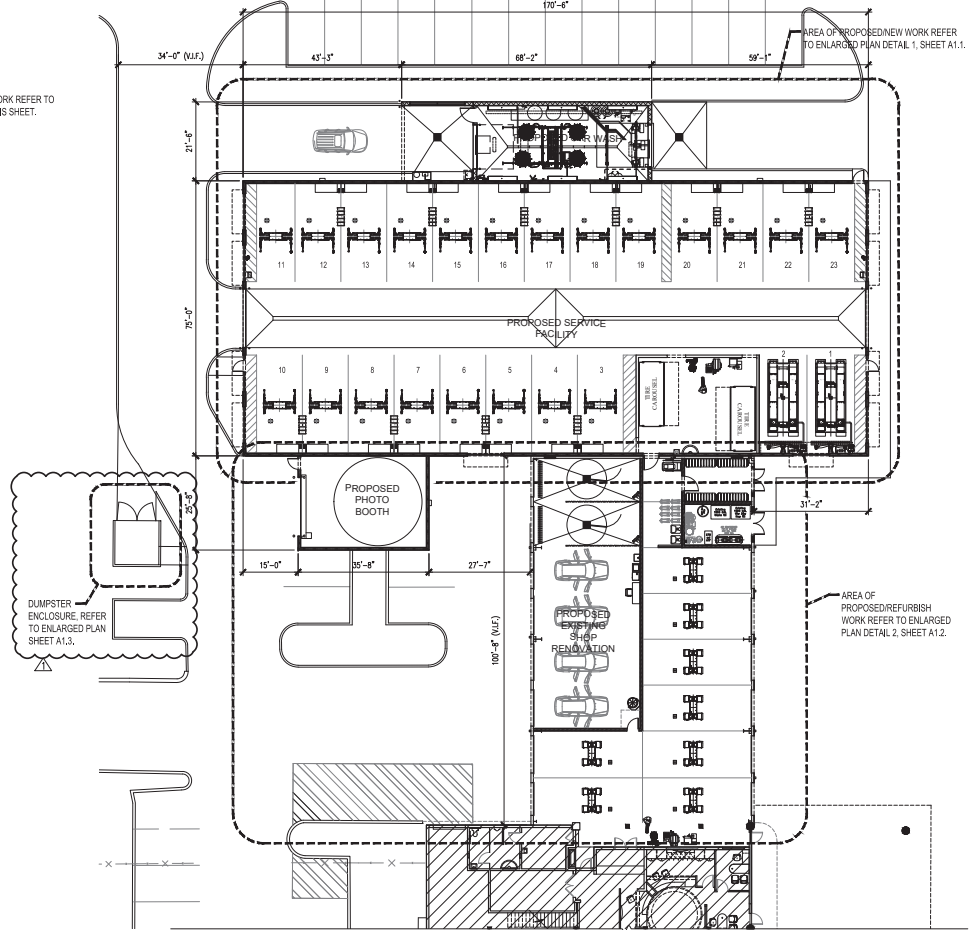
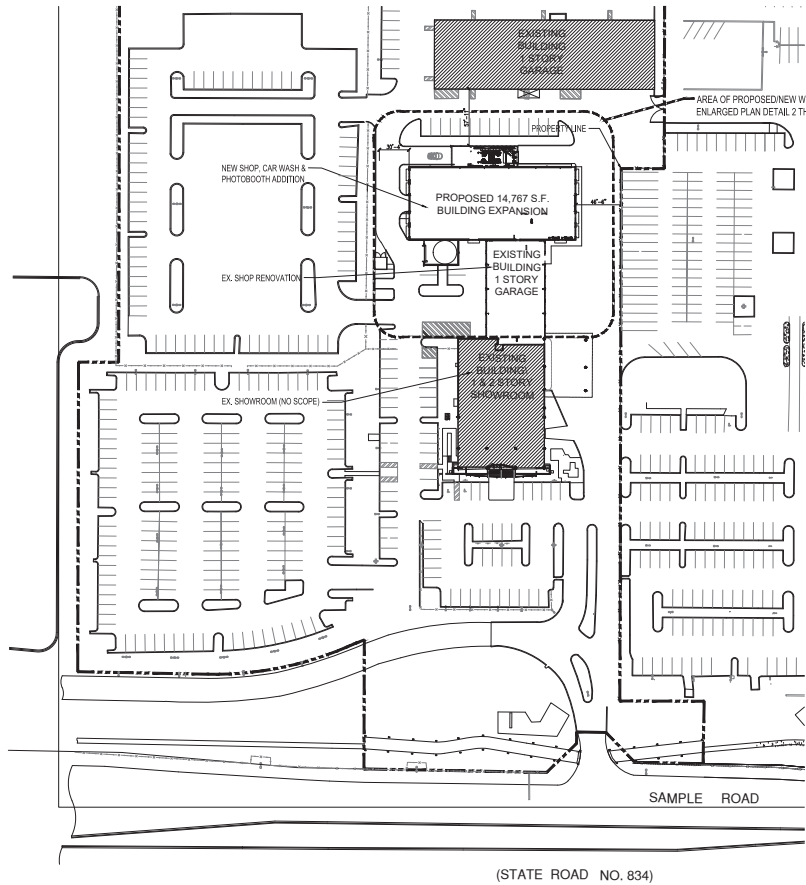


HSQ GROUP, INC.
 Engineers - Planners - Surveyors
 1489 West Palmetto Park Road, Suite 340
 Boca Raton, Florida 33486 • 561.392.0221
 CA26258 - LB7924

MAP OF SPECIFIC PURPOSE SURVEY
A PORTION OF TRACT "B", COMMERCE CENTER OF CENTER COCONUT CREEK
 CITY OF COCONUT CREEK, FLORIDA

PROJECT NUMBER
160427

SHEET NUMBER
1 OF 1



1 SITE SHOWING BUILDING/ARCHITECTURAL SCOPE PLAN -- (FOR REFERENCE ONLY)

SCALE: 1"=40'

BUILDING DATA TABLE	
EXISTING OCCUPANCY CLASSIFICATION: GROUP B - BUSINESS	NEW OCCUPANCY CLASSIFICATION: GROUP S4 - SERVICE
EXISTING CONSTRUCTION CLASSIFICATION: 5A	NEW CONSTRUCTION CLASSIFICATION: 5A
EXISTING BUILDING STORES: 2	BUILDING STORES ALLOWED PER FRC TABLE 503.1: PROPOSED STORES: 1
EXISTING SHOP BUILDING AREA: 15,729 SF	BUILDING HEIGHT ALLOWED PER FRC TABLE 503.404P: PROPOSED HEIGHT: 22'-0"
EXISTING SERVICE AREA: 4,049 SF	BUILDING AREA ALLOWED PER FRC TABLE 503 OCCUPANCY S4-1 16TH: 506.3 AUTOMATIC SPRINKLER INCREASE: 14,000 X 300% = 42,000 SF
TOTAL EXISTING AREA: 21,778 SF	NEW SERVICE BUILDING, CARWASH & PHOTOBOOTH AREA: 15,170 SF
EXISTING FIRE SPRINKLER SYSTEM: YES	TOTAL AREA AFTER EXPANSION: 36,948 SF
	NEW FIRE SPRINKLER SYSTEM: YES

2 SERVICE FACILITY, CAR WASH, PHOTOBOOTH & EXISTING SHOP FLOOR PLAN

SCALE: 1/16"=1'-0"

SITE DATA TABLE			
LAND USE CLASSIFICATION		COMMERCIAL	
ZONING CLASSIFICATION		B-4 TO PWD	
LEGAL DESCRIPTION: A PORTION OF TRACT "B", "COMMERCE CENTER OF COCONUT CREEK", ACCORDING TO THE PLAT THEREOF, AS RECORDED IN PLAT BOOK 131, AT PAGE 36, OF THE PUBLIC RECORDS OF BROWARD COUNTY, FLORIDA.			
UTILITY COMPANY INFORMATION:			
POTABLE WATER SERVICE:	COCONUT CREEK UTILITIES	SANITARY SEWER SERVICE:	COCONUT CREEK UTILITIES
STORMWATER MANAGEMENT:	S.F./W.M.D. & S.C./S.D.	TELEPHONE SERVICE:	BELLSOUTH
ELECTRICAL SERVICE:	FLORIDA POWER & LIGHT COMPANY	SOLID WASTE PICKUP:	WASTE MANAGEMENT, INC.
AREA	EXISTING	PROPOSED	
BUILDING:	23,886 S.F., 6,877 AC.	88,819 S.F., 2,576 AC.	11,293
PAVEMENT AREA:	263,381 S.F., 6,016 AC.	263,381 S.F., 6,016 AC.	15.4
GREEN AREAS:	24,123 S.F., 0.553 AC.	289,038 S.F., 6.631 AC.	33.174
TOTAL AREA:	491,268 S.F., 11,391 AC.	491,268 S.F., 11,391 AC.	100.000

THE DESIGN AND CONCEPTS DEPICTED HEREWITH ARE THE SOLE PROPERTY OF IRW ARCHITECTS. NO REPRODUCTION, REVISION OR REUSE OF THIS DRAWING IS AUTHORIZED WITHOUT SPECIFIC WRITTEN PERMISSION. ALL RIGHTS RESERVED.



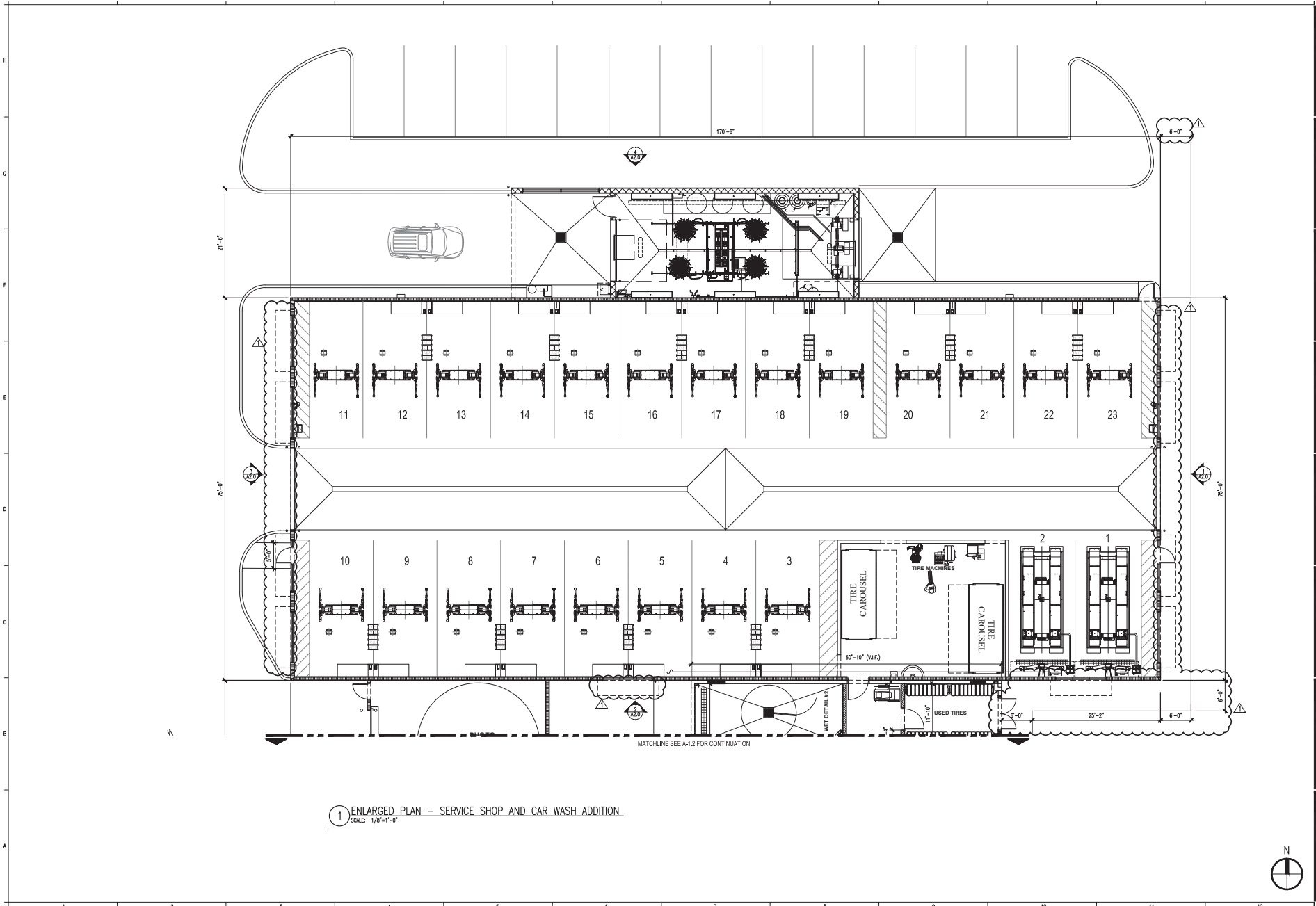
Robert Reid Wedding Architects & Planners, AIA, Inc.
4112 Coquina Street - Tampa, Florida 33607 - 813-379-6999
612 Coquina Street - Sarasota, Florida 34236 - 941-551-5911
Florida License # - Architectural Review Design / AIA-0201112

Drawn by: LS

Jose Garcia
48010760

Date	Description
12/22/16	SPN SUBMITTAL
02/16/17	SPN SUBMITTAL REVISION #1

sheet no.



1 ENLARGED PLAN - SERVICE SHOP AND CAR WASH ADDITION
SCALE: 1/8"=1'-0"

THE DESIGN AND CONCEPTS DEPICTED HEREIN ARE THE SOLE PROPERTY OF RHW ARCHITECTS. NO REPRODUCTION, REVISIONS OR REUSE OF THIS DRAWING IS AUTHORIZED WITHOUT SPECIFIC WRITTEN PERMISSION. ALL RIGHTS RESERVED.

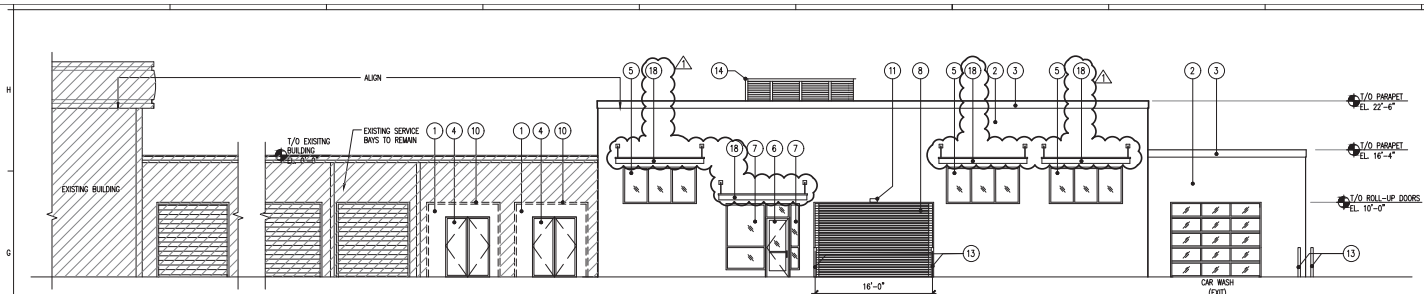
SERVICE SHOP AND CAR WASH ADDITION ENLARGED PLAN
SCALE: AS NOTED

DATE	DESCRIPTION
12.23.16	SPA SUBMITTAL
02.24.17	SPA SUBMITTAL REVISION #1

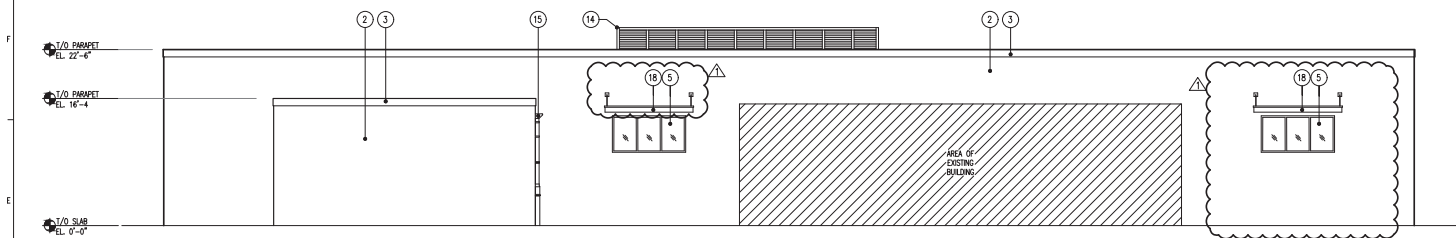
NEW SERVICE SHOP ADDITION / RENOVATION
 © INFINITY OF COCONUT CREEK
 5501 W. SAMPLE RD., COCONUT CREEK, FL
 16-049

Robert Reid Wedding Architects & Planners, AIA, Inc.
 612 South Military Trail, Deerfield Beach, Florida 33442-9642-98-0081
 Florida License #: Architectural/Interior Design / A-C00011723
 Date: 06/17/16
 Drawn By: LS

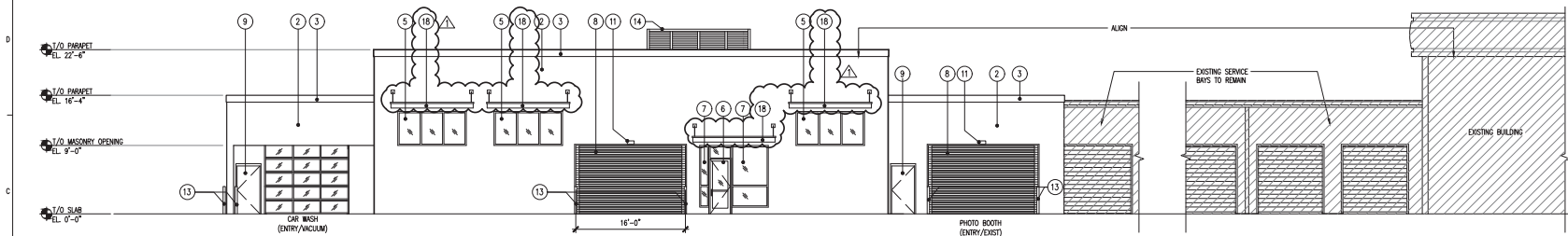




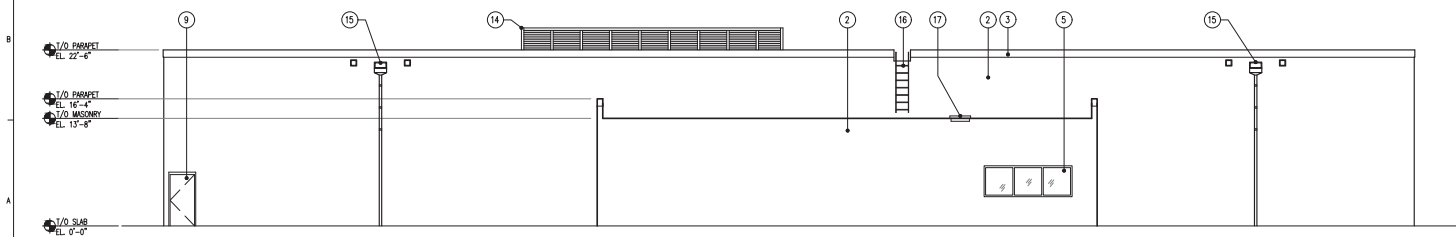
1 EAST ELEVATION
SCALE: 1/8" = 1'-0"



2 NORTH ELEVATION
SCALE: 1/8" = 1'-0"



3 WEST ELEVATION
SCALE: 1/8" = 1'-0"



4 SOUTH ELEVATION
SCALE: 1/8" = 1'-0"

ELEVATION NOTES	
1	NEW WALL IN EXISTING STRUCTURE PAINT TO MATCH EXISTING BUILDING
2	WALL FINISH PAINT TO MATCH EXISTING BUILDING
3	MANUFACTURED COPING PAINT TO MATCH EXISTING BUILDING
4	HOLLOW METAL DOUBLE DOOR & FRAME PAINT TO MATCH EXISTING BUILDING
5	EXTERIOR ALUMINUM-FRAMED STOREFRONT GLASS TO MATCH EXISTING
6	STOREFRONT DOOR TO MATCH EXISTING
7	STOREFRONT GLASS TO MATCH EXISTING
8	HIGH SPEED ROLL-UP DOOR PAINT TO MATCH EXISTING BUILDING
9	HOLLOW METAL DOOR & FRAME PAINT TO MATCH EXISTING BUILDING
10	EXISTING ROLL-UP DOOR TO BE DEMOLISHED
11	OVERHEAD DOOR SENSOR
12	TRAFFIC SIGNAL
13	CONCRETE-FILLED METAL BOLLARD W/ 'TOPCARD' CAP
14	ROOF TOP UNIT SCREENING CITYSCAPES ENVISOR PUTTY
15	ROOF DRAIN SCUPPERS, DOWNSPOUTS & OVERFLOWS PAINT TO MATCH WALLS
16	METAL LADDER
17	ROOF HATCH
18	ALUMINUM CANOPY BRUSHED NICKEL, TO MATCH STOREFRONTS

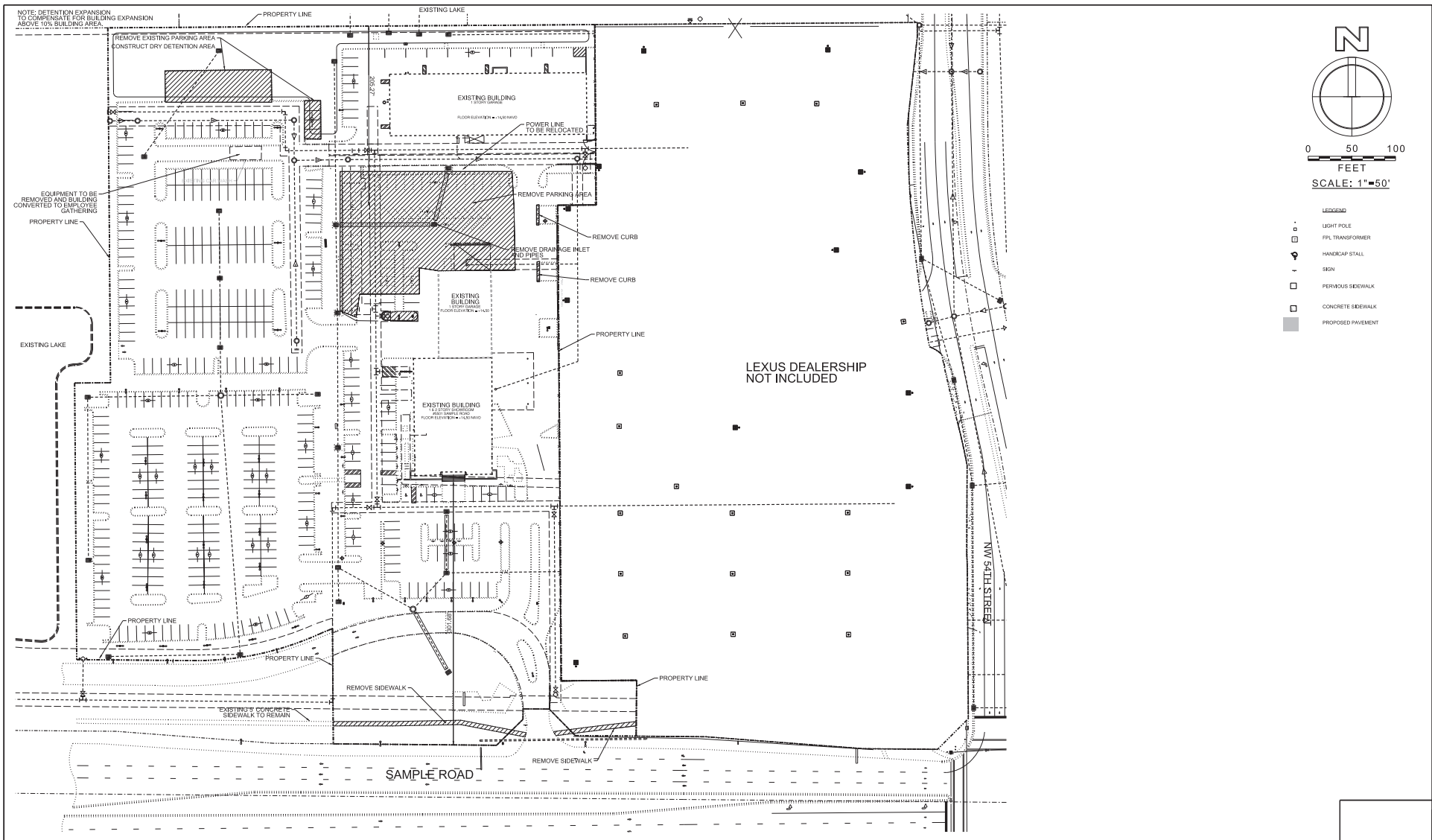
THE DESIGN AND CONCEPTS DEPICTED HEREWITH ARE THE SOLE PROPERTY OF IRW ARCHITECTS. NO REPRODUCTION, REVISION OR REUSE OF THIS DRAWING IS AUTHORIZED WITHOUT SPECIFIC WRITTEN PERMISSION. ALL RIGHTS RESERVED.

16-049
 NEW SERVICE SHOP ADDITION / RENOVATION
 @ INFINITY OF COCONUT CREEK
 5501 W. SAMPLE RD., COCONUT CREEK, FL
 Robert Reid Wedding Architects & Planners, AIA, Inc.
 4112 Cypress Street - Tampa, Florida 33607 - 813-379-0999
 612 MacDill Avenue - Fort Lauderdale, Florida 33309 - 954-561-5001
 Florida License # Architectural/Interior Design: AA-2001112

TREE DISPOSITION TABLE						
Tree #	Height (FT)	Spread (FT)	DBH (IN)	Botanical Name	Common Name	Disposition
1	30	17	10	Quercus virginiana	Lie Oak	Remove
2	30	15	8	Quercus virginiana	Lie Oak	Remove
3	30	20	15	Quercus virginiana	Lie Oak	Remove
4	20	15	10	Callistemon	Bottle Brush	Remove
5	22	18	10	Sabal palmetto	Cabbage Palm	Remove
6	22	18	10	Sabal palmetto	Cabbage Palm	Remove
7	22	18	10	Sabal palmetto	Cabbage Palm	Remove
8	22	20	18	Quercus virginiana	Lie Oak	Remove
9	17	15	12	Callistemon	Bottle Brush	Remove
10	30	15	10	Quercus virginiana	Lie Oak	Remove
11	30	15	10	Quercus virginiana	Lie Oak	Remove
12	30	17	10	Sabal palmetto	Cabbage Palm	Remove
13	27	17	10	Sabal palmetto	Cabbage Palm	Remove
14	27	17	10	Sabal palmetto	Cabbage Palm	Remove
15	15	10	4	Callistemon	Bottle Brush	Remove
16	15	10	4	Callistemon	Bottle Brush	Remove
17	15	10	4	Callistemon	Bottle Brush	Remove
18	25	17	12	Callistemon	Bottle Brush	Remove
19	25	17	12	Callistemon	Bottle Brush	Remove
20	25	20	18	Quercus virginiana	Lie Oak	Remove
21	15	10	15	Adonias meenii	Christmas Palm (Tripe)	Remove
22	27	12	10	Sabal palmetto	Cabbage Palm	Remove
23	27	12	10	Sabal palmetto	Cabbage Palm	Remove
24	27	12	10	Sabal palmetto	Cabbage Palm	Remove
25	18	12	12	Adonias meenii	Christmas Palm (Tripe)	Remove
26	32	23	18	Coccothra diversifolia	Pigeon Plum	Remove
27	30	15	24	Roystonia regia	Royal Palm	Remove
28	12	10	8	Christina Palm (Tripe)	Remove	Remove
29	30	20	24	Roystonia regia	Royal Palm	Remove
30	30	20	24	Roystonia regia	Royal Palm	Remove
31	30	20	24	Roystonia regia	Royal Palm	Remove
32	30	20	24	Roystonia regia	Royal Palm	Remove
33	30	20	24	Roystonia regia	Royal Palm	Remove
34	30	20	24	Roystonia regia	Royal Palm	Remove
35	30	20	24	Roystonia regia	Royal Palm	Remove
36	30	20	24	Roystonia regia	Royal Palm	Remove
37	30	20	24	Roystonia regia	Royal Palm	Remove
38	30	20	24	Roystonia regia	Royal Palm	Remove
39	30	20	24	Roystonia regia	Royal Palm	Remove
40	30	20	24	Roystonia regia	Royal Palm	Remove
41	30	20	24	Roystonia regia	Royal Palm	Remove
42	30	20	24	Roystonia regia	Royal Palm	Remove
43	30	20	18	Roystonia regia	Royal Palm	Remove
44	32	20	18	Roystonia regia	Royal Palm	Remove
45	32	20	18	Roystonia regia	Royal Palm	Remove
46	20	15	12	Roystonia regia	Royal Palm	Remove
47	30	20	24	Roystonia regia	Royal Palm	Remove
48	15	8	4	Syngnus ramanzoffiana	Cuen Palm	Remove
49	28	20	24	Roystonia regia	Royal Palm	Remove
50	12	15	18	Phoenix roebelenii	Flyguy Date Palm	Remove
51	17	18	9	Syngnus ramanzoffiana	Cuen Palm	Remove
52	17	8	4	Syngnus ramanzoffiana	Cuen Palm	Remove
53	20	17	10	Syngnus ramanzoffiana	Cuen Palm	Remove
54	17	8	9	Phoenix dactylopera	Date Palm	Remove
55	30	22	24	Quercus virginiana	Lie Oak	Remove
56	30	25	26	Quercus virginiana	Lie Oak	Remove
57	20	10	6	Syngnus ramanzoffiana	Cuen Palm	Remove
58	20	10	6	Syngnus ramanzoffiana	Cuen Palm	Remove
59	25	15	10	Sabal palmetto	Cabbage Palm	Remove
60	25	15	10	Sabal palmetto	Cabbage Palm	Remove
61	25	15	10	Sabal palmetto	Cabbage Palm	Remove
62	25	15	10	Sabal palmetto	Cabbage Palm	Remove
63	25	15	10	Sabal palmetto	Cabbage Palm	Remove
64	25	15	10	Sabal palmetto	Cabbage Palm	Remove
65	25	15	10	Sabal palmetto	Cabbage Palm	Remove
66	25	15	10	Sabal palmetto	Cabbage Palm	Remove
67	25	15	10	Sabal palmetto	Cabbage Palm	Remove
68	25	15	10	Sabal palmetto	Cabbage Palm	Remove
69	25	15	10	Sabal palmetto	Cabbage Palm	Remove
70	20	10	8	Syngnus ramanzoffiana	Cuen Palm	Remove
71	20	10	8	Syngnus ramanzoffiana	Cuen Palm	Remove
72	20	10	8	Syngnus ramanzoffiana	Cuen Palm	Remove
73	20	10	8	Syngnus ramanzoffiana	Cuen Palm	Remove
74	20	10	8	Syngnus ramanzoffiana	Cuen Palm	Remove
75	18	10	6	Sabal palmetto	Cabbage Palm	Remove
76	18	10	6	Sabal palmetto	Cabbage Palm	Remove
77	18	10	6	Sabal palmetto	Cabbage Palm	Remove
78	20	16	8	Quercus virginiana	Lie Oak	Remove
79	15	10	16	Sabal palmetto	Cabbage Palm	Remove
80	33	27	38	Sweetiana mahogany	Mahogany	Remove
81	28	24	24	Sweetiana mahogany	Mahogany	Remove
82	30	36	36	Sweetiana mahogany	Mahogany	Remove
83	30	20	36	Sweetiana mahogany	Mahogany	Remove
84	25	20	24	Quercus virginiana	Lie Oak	Remove
85	25	20	24	Quercus virginiana	Lie Oak	Remove
86	20	10	12	Syngnus ramanzoffiana	Cuen Palm	Remove
87	20	10	12	Syngnus ramanzoffiana	Cuen Palm	Remove
88	20	15	12	Sabal palmetto	Cabbage Palm	Remove
89	20	15	12	Sabal palmetto	Cabbage Palm	Remove
90	20	15	12	Sabal palmetto	Cabbage Palm	Remove
91	20	15	12	Sabal palmetto	Cabbage Palm	Remove
92	20	15	12	Sabal palmetto	Cabbage Palm	Remove
93	20	15	12	Sabal palmetto	Cabbage Palm	Remove
94	20	15	12	Sabal palmetto	Cabbage Palm	Remove
95	20	15	12	Sabal palmetto	Cabbage Palm	Remove
96	20	15	12	Sabal palmetto	Cabbage Palm	Remove
97	20	15	12	Sabal palmetto	Cabbage Palm	Remove
98	20	15	14	Quercus virginiana	Lie Oak	Remove
99	20	15	14	Quercus virginiana	Lie Oak	Remove

01	20	15	14	Quercus virginiana	Lie Oak	Remove
02	20	15	14	Quercus virginiana	Lie Oak	Remove
03	20	15	14	Quercus virginiana	Lie Oak	Remove
04	20	15	14	Quercus virginiana	Lie Oak	Remove
05	20	15	14	Quercus virginiana	Lie Oak	Remove
06	20	15	14	Quercus virginiana	Lie Oak	Remove
07	20	15	14	Quercus virginiana	Lie Oak	Remove
08	20	15	14	Quercus virginiana	Lie Oak	Remove
09	15	10	10	Sabal palmetto	Cabbage Palm	Remove
10	18	10	10	Sabal palmetto	Cabbage Palm	Remove
11	15	10	10	Sabal palmetto	Cabbage Palm	Remove
12	15	10	10	Sabal palmetto	Cabbage Palm	Remove
13	15	10	10	Sabal palmetto	Cabbage Palm	Remove
14	20	17	24	Quercus virginiana	Lie Oak	Remove
15	20	16	18	Quercus virginiana	Lie Oak	Remove
16	20	15	18	Sabal palmetto	Cabbage Palm	Remove
17	20	15	18	Sabal palmetto	Cabbage Palm	Remove
18	20	15	18	Sabal palmetto	Cabbage Palm	Remove
19	20	15	18	Sabal palmetto	Cabbage Palm	Remove
20	20	15	18	Sabal palmetto	Cabbage Palm	Remove
21	20	15	18	Sabal palmetto	Cabbage Palm	Remove
22	20	15	18	Sabal palmetto	Cabbage Palm	Remove
23	20	15	18	Sabal palmetto	Cabbage Palm	Remove
24	20	15	20	Sabal palmetto	Cabbage Palm	Remove
25	20	15	18	Sabal palmetto	Cabbage Palm	Remove
26	20	15	18	Sabal palmetto	Cabbage Palm	Remove
27	20	15	18	Sabal palmetto	Cabbage Palm	Remove
28	20	15	18	Sabal palmetto	Cabbage Palm	Remove
29	20	15	6	Tabebuia heterophylla	Remove	Remove
30	25	20	18	Quercus virginiana	Lie Oak	Remove
31	18	12	18	Sabal palmetto	Cabbage Palm	Remove
32	18	12	18	Sabal palmetto	Cabbage Palm	Remove
33	18	12	18	Sabal palmetto	Cabbage Palm	Remove
34	18	12	18	Sabal palmetto	Cabbage Palm	Remove
35	18	12	18	Sabal palmetto	Cabbage Palm	Remove
36	20	15	10	Quercus virginiana	Lie Oak	Remove
37	25	20	24	Quercus virginiana	Lie Oak	Remove
38	25	20	24	Quercus virginiana	Lie Oak	Remove
39	25	15	12	Quercus virginiana	Lie Oak	Remove
40	25	15	12	Quercus virginiana	Lie Oak	Remove
41	20	12	15	Sabal palmetto	Cabbage Palm	Remove
42	20	12	15	Sabal palmetto	Cabbage Palm	Remove
43	20	12	15	Sabal palmetto	Cabbage Palm	Remove
44	25	25	36	Quercus virginiana	Lie Oak	Remove
45	25	20	18	Quercus virginiana	Lie Oak	Remove
46	25	20	3	Quercus virginiana	Lie Oak	Remove
47	25	15	24	Quercus virginiana	Lie Oak	Remove
48	25	15	18	Quercus virginiana	Lie Oak	Remove
49	25	15	18	Quercus virginiana	Lie Oak	Remove
50	25	15	24	Quercus virginiana	Lie Oak	Remove
51	25	10	14	Callistemon	Bottle Brush	Remove
52	25	15	18	Quercus virginiana	Lie Oak	Remove
53	10	5	6	Callistemon	Bottle Brush	Remove
54	25	15	18	Sabal palmetto	Cabbage Palm	Remove
55	25	15	18	Sabal palmetto	Cabbage Palm	Remove
56	25	15	18	Sabal palmetto	Cabbage Palm	Remove
57	30	20	48	Quercus virginiana	Lie Oak	Remove
58	30	25	40	Pongamia pinnata	Indian Beech Tree	Remove
59	30	30	48	Pongamia pinnata	Indian Beech Tree	Remove
60	25	20	18	Quercus virginiana	Lie Oak	Remove
61	25	20	18	Quercus virginiana	Lie Oak	Remove
62	25	20	36	Quercus virginiana	Lie Oak	Remove
63	25	30	40	Pongamia pinnata	Indian Beech Tree	Remove
64	22	20	18	Quercus virginiana	Lie Oak	Remove
65	25	20	22	Pongamia pinnata	Indian Beech Tree	Remove
66	32	30	30	Quercus virginiana	Lie Oak	Remove
67	25	15	15	Quercus virginiana	Lie Oak	Remove
68	25	15	15	Quercus virginiana	Lie Oak	Remove
69	20	12	10	Sabal palmetto	Cabbage Palm	Remove
70	20	12	10	Sabal palmetto	Cabbage Palm	Remove
71	20	12	10	Sabal palmetto	Cabbage Palm	Remove
72	20	12	10	Sabal palmetto	Cabbage Palm	Remove
73	20	12	10	Sabal palmetto	Cabbage Palm	Remove
74	26	15	18	Quercus virginiana	Lie Oak	Remove
75	26	15	12	Quercus virginiana	Lie Oak	Remove
76	25	15	15	Sabal palmetto	Cabbage Palm	Remove
77	20	15	15	Sabal palmetto	Cabbage Palm	Remove
78	20	15	15	Sabal palmetto	Cabbage Palm	Remove
79	20	15	15	Sabal palmetto	Cabbage Palm	Remove
80	25	25	36	Pongamia pinnata	Indian Beech Tree	Remove
81	30	15	18	Acer rubrum	Red Maple	Remove
82	10	8	12	Sabal palmetto	Cabbage Palm	Remove
83	15	10	18	Sabal palmetto	Cabbage Palm	Remove
84	15	10	18	Sabal palmetto	Cabbage Palm	Remove
85	20	15	10	Acer rubrum	Red Maple	Remove
86	23	15	18	Sabal palmetto	Cabbage Palm	Remove
87	23	15	18	Sabal palmetto	Cabbage Palm	Remove
88	23	15	18	Sabal palmetto	Cabbage Palm	Remove
89	20	15	18	Sabal palmetto	Cabbage Palm	Remove
90	20	15	18	Sabal palmetto	Cabbage Palm	Remove
91	20	15	18	Sabal palmetto	Cabbage Palm	Remove
92	26	17	18	Acer rubrum	Red Maple	Remove
93	25	17	18	Acer rubrum	Red Maple	Remove
94	25	17	18	Acer rubrum	Red Maple	Remove
95	20	15	12	Sabal palmetto	Cabbage Palm	Remove
96	20	15	13	Sabal palmetto	Cabbage Palm	Remove
97	20	15	15	Sabal palmetto	Cabbage Palm	Remove
98	20	15	15	Sabal palmetto	Cabbage Palm	Remove
99	20	15	13	Sabal palmetto	Cabbage Palm	Remove

200	20	15	15	Acer rubrum	Red Maple	Remove
201	15	10	15	Pongamia pinnata	Indian Beech Tree	Remove
202	20	15	36	Pongamia pinnata	Indian Beech Tree	Remove
203	20	25	20	Quercus virginiana	Lie Oak	Remove
204	20	15	14	Sabal palmetto	Cabbage Palm	Remove
205	20	15	14	Sabal palmetto	Cabbage Palm	Remove
206	20	15	14	Sabal palmetto	Cabbage Palm	Remove
207	20	15	14	Sabal palmetto	Cabbage Palm	Remove
208	20	15	14	Sabal palmetto	Cabbage Palm	Remove
209	20	15	14	Sabal palmetto	Cabbage Palm	Remove
210	20	15	14	Sabal palmetto	Cabbage Palm	Remove
211	20	15	14	Sabal palmetto	Cabbage Palm	Remove
212	20	15	14	Sabal palmetto	Cabbage Palm	Remove
213	20	15	14	Sabal palmetto	Cabbage Palm	Remove
214	20	15	14	Sabal palmetto	Cabbage Palm	Remove
215	20	15	14	Sabal palmetto	Cabbage Palm	Remove
216	20	15	14	Sabal palmetto	Cabbage Palm	Remove
217	20	15	14	Sabal palmetto	Cabbage Palm	Remove
218	20	15	12	Quercus virginiana	Lie Oak	Remove
219	20	17	12	Quercus virginiana	Lie Oak	Remove
220	20	17	12	Quercus virginiana	Lie Oak	Remove</



NO.	DATE	BY	REVISIONS	NO.	DATE	BY	REVISIONS
1	2/20/17	JMH	REVISE PER DRC COMMENTS				

Designed by: JH Date: 3/16
 Drawn by: AZ Date: 3/16
 Checked by: JH Date: 3/16

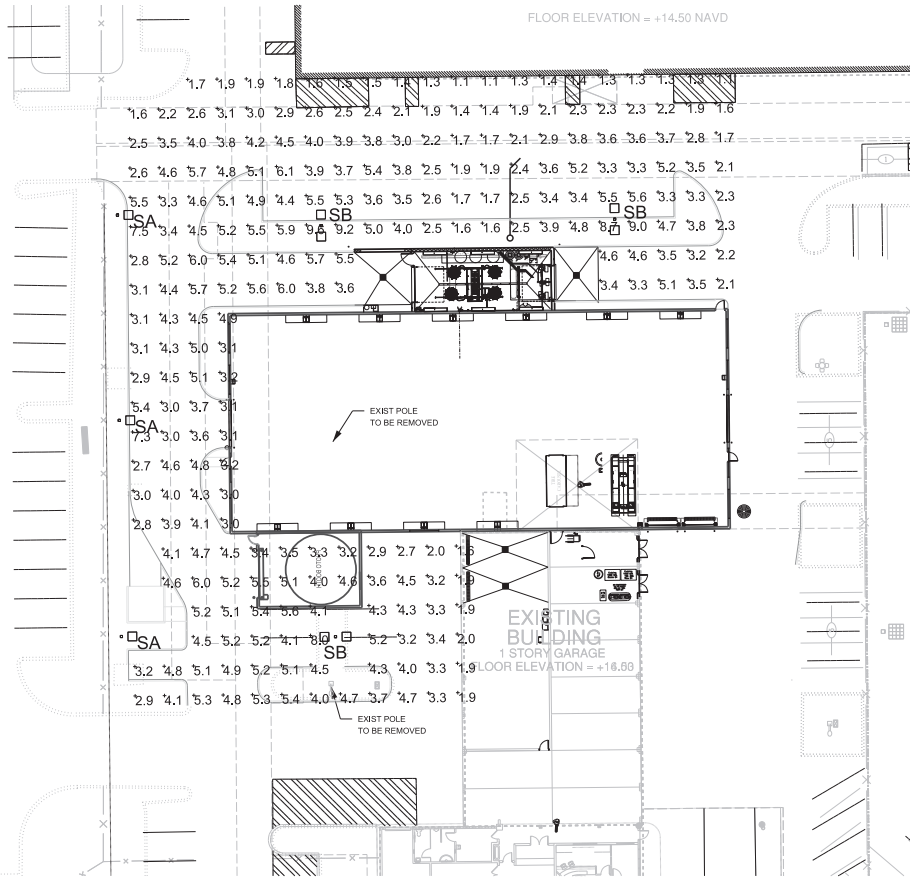


HSQ GROUP, INC.
 Engineers · Planners · Surveyors
 1489 West Palmetto Park Road, Suite 340
 Boca Raton, Florida 33486 · 561.392.0221
 C205293 · LB7924

INFINITI OF COCONUT CREEK
 DEMOLITION PLAN

SCALE: 1" = 50'	Date: 2/20/2017
PROJECT NUMBER: 1604-27	Approved by: JH REGISTERED P.E.
SHEET NUMBER: DM-1	Registered Engineer No. 55515 State of Florida

2/20/2017
 J:\projects\2017\1604-27\graphics\demolition\plan\1604-27.dwg



VIPER L SERIES

BEACON

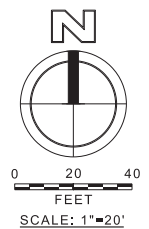
PRODUCT IMAGES

DIMENSIONS

MOUNTING OPTIONS

CERTIFICATIONS LISTINGS

DLG, IK05, BEACON, HUBBELL Lighting



LUMINAIRE SCHEDULE						
Symbol	Label	Qty	Catalog Number	File	LLF	Watts
□ SA	SA	3	BEACON PRODUCTS VPL 80NB-180 3K T4 UNV COLOR (POLE MT @ 25 FT AFG)	VPL-80NB-180-3K-T4.ies	1.00	180
□ SB	SB	3	BEACON PRODUCTS VPL 80NB-180 3K T4 UNV COLOR (POLE MT @ 25 FT AFG)	VPL-80NB-180-3K-T4.ies	1.00	360

STATISTICS						
Description	Symbol	Avg	Max	Min	Max/Min	Avg/Min
New Parking Lot/Drive Area (FC @ 3 FT AFG)	+	3.7 fc	9.6 fc	1.1 fc	8.7:1	3.4:1

NO.	DATE	BY	REVISIONS	NO.	DATE	BY	REVISIONS
1	2/20/17	JMH	ADD PLAN PER DRC COMMENTS				

Designed by: JH Date: 3/16
 Drawn by: AZ Date: 3/16
 Checked by: JH Date: 3/16



HSQ GROUP, INC.
 Engineers · Planners · Surveyors
 1489 West Palmetto Park Road, Suite 340
 Boca Raton, Florida 33486 · 561.392.0221
 C205258 · LB7524

INFINITI OF COCONUT CREEK
 PHOTOMETRICS PLAN

SCALE:
 1" = 20'
 PROJECT NUMBER:
 1604-27
 SHEET NUMBER:
 PH-1

Date: 2/20/2017
 Approved by: JH (REGISTERED P.E.)
 Registered Engineer No.: 55816
 State of Florida

2/20/2017 10:52:47 am c:\projects\infiniti of coconut creek\plan\1604-27-ph-1.dwg

COMMERCE CENTER OF COCONUT CREEK

BEING A PART OF RECORDS OF THE COUNTY OF COCONTO, ARIZONA, AND THE SEVENTH JUDICIAL DISTRICT OF ARIZONA, COMMENCED AT THE OFFICE OF THE COUNTY CLERK OF SAID COUNTY, ARIZONA, ON THE 15TH DAY OF MARCH, 1954, IN ACCORDANCE WITH THE PROVISIONS OF SECTION 14-101, ARIZONA STATUTES ANNOTATED.

WITNESSED BY ME, COUNTY CLERK OF SAID COUNTY, ARIZONA, ON THE 15TH DAY OF MARCH, 1954.

SCHWENKE-SWISSER & ASSOCIATES, INC.
1000 UNIVERSITY AVENUE, SUITE 1000, PHOENIX, ARIZONA 85024
MEMPHIS, TENNESSEE

MORTGAGE

BEFORE ME, the undersigned authority, on this day personally appeared _____, known to me to be the person whose name is subscribed to the foregoing instrument, and acknowledged to me that he executed the same for the purposes and consideration therein expressed.

My commission expires _____.

WITNESS my hand and the seal of my office this _____ day of _____, 1954.

Notary Public in and for the State of Arizona

My commission expires _____.

WITNESS my hand and the seal of my office this _____ day of _____, 1954.

Notary Public in and for the State of Arizona

My commission expires _____.

WITNESS my hand and the seal of my office this _____ day of _____, 1954.

Notary Public in and for the State of Arizona

My commission expires _____.

WITNESS my hand and the seal of my office this _____ day of _____, 1954.

Notary Public in and for the State of Arizona

My commission expires _____.

WITNESS my hand and the seal of my office this _____ day of _____, 1954.

Notary Public in and for the State of Arizona

My commission expires _____.

WITNESS my hand and the seal of my office this _____ day of _____, 1954.

Notary Public in and for the State of Arizona

My commission expires _____.

WITNESS my hand and the seal of my office this _____ day of _____, 1954.

Notary Public in and for the State of Arizona

My commission expires _____.

WITNESS my hand and the seal of my office this _____ day of _____, 1954.

Notary Public in and for the State of Arizona

My commission expires _____.

WITNESS my hand and the seal of my office this _____ day of _____, 1954.

Notary Public in and for the State of Arizona

My commission expires _____.

WITNESS my hand and the seal of my office this _____ day of _____, 1954.

Notary Public in and for the State of Arizona

My commission expires _____.

WITNESS my hand and the seal of my office this _____ day of _____, 1954.

Notary Public in and for the State of Arizona

My commission expires _____.

WITNESS my hand and the seal of my office this _____ day of _____, 1954.

Notary Public in and for the State of Arizona

My commission expires _____.

WITNESS my hand and the seal of my office this _____ day of _____, 1954.

Notary Public in and for the State of Arizona

My commission expires _____.

WITNESS my hand and the seal of my office this _____ day of _____, 1954.

Notary Public in and for the State of Arizona

