

Market: Miami
Site Number: 6FB1251
Site Name: WINSTON NATURE GARDEN

FIRST AMENDMENT TO LEASE AGREEMENT

THIS AMENDMENT TO the Lease Agreement (this "Amendment") is effective the _____ day of August, 2008, between City of Coconut Creek, Florida ("Landlord"), and T-MOBILE SOUTH LLC, a Delaware limited liability company ("Tenant").

WHEREAS, Landlord and Tenant entered into a Lease Agreement, dated May 28, 2008 (the "Lease") and both desire to amend as follows;

NOW THEREFORE, for good and valuable consideration, the receipt and sufficiency of which is hereby acknowledged, Landlord and Tenant hereby agree to amend the Lease as follows:

- 1. Exhibit B of the Agreement is hereby deleted in its entirety and replaced with the attached revised Exhibit B-1 and Exhibit B-2, which is incorporated herein by reference. Unless otherwise defined herein, capitalized terms used in this Amendment have the same meanings such terms are given in the Lease
- 2. Except as expressly modified herein, the terms and provisions of the Lease shall remain in full force and effect.

EXECUTED as of the date, or later of the dates, set forth in the respective acknowledgements of the parties hereto.

LANDLORD: CITY OF COCUNUT CREEK, FLORIDA

By: _____
Printed Name: ~~Rebecca A. Tolley~~
Its: Mayor

Witnesses:

ATTEST:

APPROVE AS TO FORM.

Name: _____
City Clerk

Name: _____
Asst. City Attorney

TENANT: T-MOBILE SOUTH LLC

By: [Signature]
Printed Name: Harlan Kickhoefer
Title: Director, Engineering & Operations

8/8/08

Witnesses:

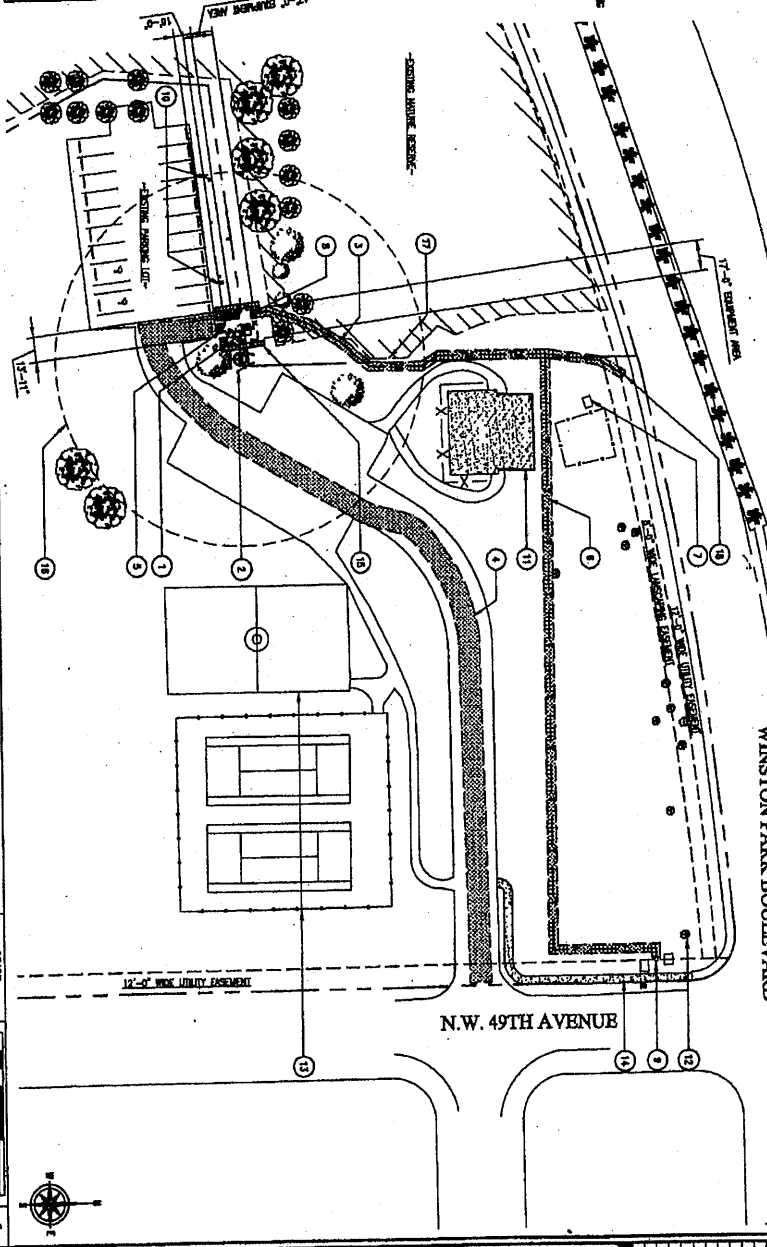
[Signature]
Name: Jessie DuBernard

[Signature]
Name: Tamara McLaren

KEY NOTES:

- 1 NEW EXISTING CONCRETE PAVED TO A CONCRETE AND CURB FINISH TO MATCH EXISTING PAVEMENT WITH 1/2" WIDE FINISH FURROWS, APPROXIMATELY 10' PER FOOT, TO MATCH EXISTING PAVEMENT.
- 2 NEW 7" WIDE FINISH FURROWS, APPROXIMATELY 10' PER FOOT, TO MATCH EXISTING PAVEMENT.
- 3 NEW 7" WIDE FINISH FURROWS, APPROXIMATELY 10' PER FOOT, TO MATCH EXISTING PAVEMENT.
- 4 NEW 7" WIDE FINISH FURROWS, APPROXIMATELY 10' PER FOOT, TO MATCH EXISTING PAVEMENT.
- 5 NEW 7" WIDE FINISH FURROWS, APPROXIMATELY 10' PER FOOT, TO MATCH EXISTING PAVEMENT.
- 6 NEW 7" WIDE FINISH FURROWS, APPROXIMATELY 10' PER FOOT, TO MATCH EXISTING PAVEMENT.
- 7 NEW 7" WIDE FINISH FURROWS, APPROXIMATELY 10' PER FOOT, TO MATCH EXISTING PAVEMENT.
- 8 NEW 7" WIDE FINISH FURROWS, APPROXIMATELY 10' PER FOOT, TO MATCH EXISTING PAVEMENT.
- 9 NEW 7" WIDE FINISH FURROWS, APPROXIMATELY 10' PER FOOT, TO MATCH EXISTING PAVEMENT.
- 10 NEW 7" WIDE FINISH FURROWS, APPROXIMATELY 10' PER FOOT, TO MATCH EXISTING PAVEMENT.
- 11 NEW 7" WIDE FINISH FURROWS, APPROXIMATELY 10' PER FOOT, TO MATCH EXISTING PAVEMENT.
- 12 NEW 7" WIDE FINISH FURROWS, APPROXIMATELY 10' PER FOOT, TO MATCH EXISTING PAVEMENT.
- 13 NEW 7" WIDE FINISH FURROWS, APPROXIMATELY 10' PER FOOT, TO MATCH EXISTING PAVEMENT.
- 14 NEW 7" WIDE FINISH FURROWS, APPROXIMATELY 10' PER FOOT, TO MATCH EXISTING PAVEMENT.
- 15 NEW 7" WIDE FINISH FURROWS, APPROXIMATELY 10' PER FOOT, TO MATCH EXISTING PAVEMENT.
- 16 NEW 7" WIDE FINISH FURROWS, APPROXIMATELY 10' PER FOOT, TO MATCH EXISTING PAVEMENT.
- 17 NEW 7" WIDE FINISH FURROWS, APPROXIMATELY 10' PER FOOT, TO MATCH EXISTING PAVEMENT.
- 18 NEW 7" WIDE FINISH FURROWS, APPROXIMATELY 10' PER FOOT, TO MATCH EXISTING PAVEMENT.
- 19 NEW 7" WIDE FINISH FURROWS, APPROXIMATELY 10' PER FOOT, TO MATCH EXISTING PAVEMENT.
- 20 NEW 7" WIDE FINISH FURROWS, APPROXIMATELY 10' PER FOOT, TO MATCH EXISTING PAVEMENT.
- 21 NEW 7" WIDE FINISH FURROWS, APPROXIMATELY 10' PER FOOT, TO MATCH EXISTING PAVEMENT.
- 22 NEW 7" WIDE FINISH FURROWS, APPROXIMATELY 10' PER FOOT, TO MATCH EXISTING PAVEMENT.
- 23 NEW 7" WIDE FINISH FURROWS, APPROXIMATELY 10' PER FOOT, TO MATCH EXISTING PAVEMENT.
- 24 NEW 7" WIDE FINISH FURROWS, APPROXIMATELY 10' PER FOOT, TO MATCH EXISTING PAVEMENT.
- 25 NEW 7" WIDE FINISH FURROWS, APPROXIMATELY 10' PER FOOT, TO MATCH EXISTING PAVEMENT.
- 26 NEW 7" WIDE FINISH FURROWS, APPROXIMATELY 10' PER FOOT, TO MATCH EXISTING PAVEMENT.
- 27 NEW 7" WIDE FINISH FURROWS, APPROXIMATELY 10' PER FOOT, TO MATCH EXISTING PAVEMENT.
- 28 NEW 7" WIDE FINISH FURROWS, APPROXIMATELY 10' PER FOOT, TO MATCH EXISTING PAVEMENT.
- 29 NEW 7" WIDE FINISH FURROWS, APPROXIMATELY 10' PER FOOT, TO MATCH EXISTING PAVEMENT.
- 30 NEW 7" WIDE FINISH FURROWS, APPROXIMATELY 10' PER FOOT, TO MATCH EXISTING PAVEMENT.

ENLARGED SITE PLAN



WINSTON PARK BOULEVARD

N.W. 49TH AVENUE

SCALE
1" = 5'



ISSUE STATUS

NO.	DATE	DESCRIPTION
1	11/17/07	ISSUE FOR PERMITS
2	11/17/07	ISSUE FOR PERMITS
3	11/17/07	ISSUE FOR PERMITS
4	11/17/07	ISSUE FOR PERMITS
5	11/17/07	ISSUE FOR PERMITS

MACTBC
MACTBC CONSULTING, INC.
CORPORATE OFFICE
1100 UNIVERSITY DRIVE
AVENUE, SUITE 200
AVENUE, SUITE 200
MIAMI, FL 33136
TEL: (305) 555-1700
FAX: (305) 555-1700

PROJECT NO. 06-06-1000 (100)

T-Mobile
301 N.W. 107 STREET, SUITE 1000
PLANTATION, FLORIDA 33324

SITE ADDRESS:
301 N.W. 107 AVENUE
CORPORATE CENTER
PLANTATION, FLORIDA

DATE: 11/17/07

DESIGNED BY: B1

UNUSHD

