

Walmart #1916 Coconut Creek, FL

Remodel

Bowman Consulting | Wal-Mart Stores East LP



Project Team

| | |
|----------------------------|--------------------------|
| <u>Developer/Applicant</u> | Wal-Mart Stores East, LP |
| <u>Engineer</u> | Bowman |
| <u>Architect</u> | Cuhaci Peterson |
| <u>Landscape Architect</u> | ALOHA |

Walmart

CUHACI  PETERSON

Bowman

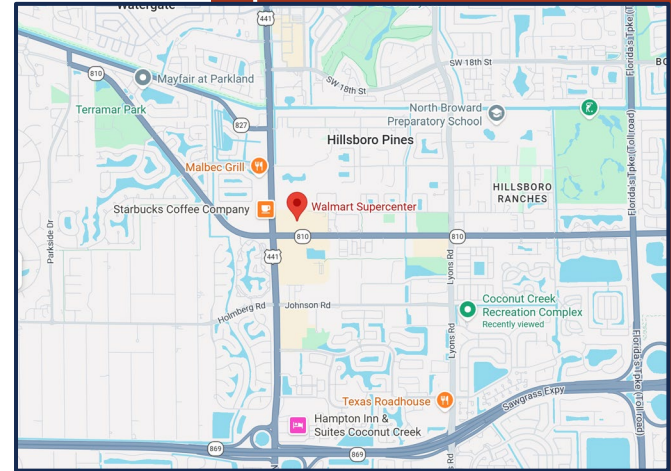
 **ALOHA PACIFICA** LLC
LANDSCAPE ARCHITECTURE + WATER FEATURES
401-A EAST FAIRBANKS AVE. WINTER PARK, FLORIDA 32789
(407) 617-8998 OFFICE ALOHAPACIFICALLC@EMBARQMAIL.COM

Project Overview



Site Location

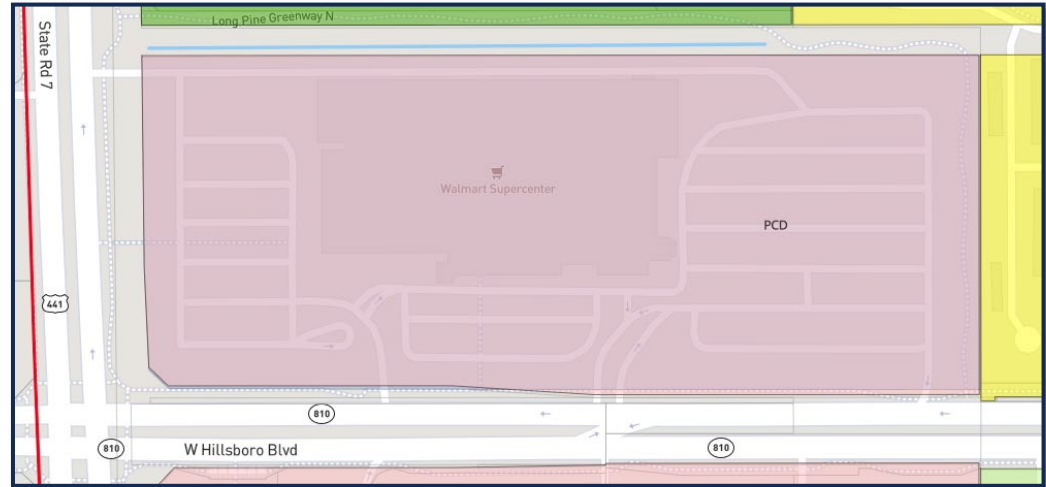
- Address: 5571 W Hillsboro Blvd, Coconut Creek, FL
- North State Rd 7 to the west and W Hillsboro Blvd to the South
- Parcel IDs: 4842 06 37 0010



Site Data



- Jurisdiction: City of Coconut Creek
- Zoning: Planned Commerce District
- Future Land Use: Commercial
- Site area: ±19.66 AC
- Land disturbance area: ±0.46 AC



City of Coconut Creek Zoning GIS Map

Planned commerce district (PCD) means land under unified control, planned and developed as a whole in a single development operation or an approved programmed series of development operations for nonresidential activities including office, commercial, industrial and mixed-use commerce/employment center uses.





Proposed Improvements

Building Expansion

There will be a ± 5,928 SF expansion on the northeast corner of the existing building.

- This expansion will house the operations and storage for the online pickup program.

Pickup Parking

5 additional parking spaces dedicated to the Walmart Online Pickup and Delivery operations for a total of 31 pickup spaces. Other improvements in this pickup area would include new sidewalk, curbing, and modified striping of pickup spaces and crosswalks.

- Existing spaces are to be designated as pickup parking only.
- Enhances shopping experience for existing customers and provides easier access to shopping for customers with accessibility issues.

Site Signage and Pavement Markings

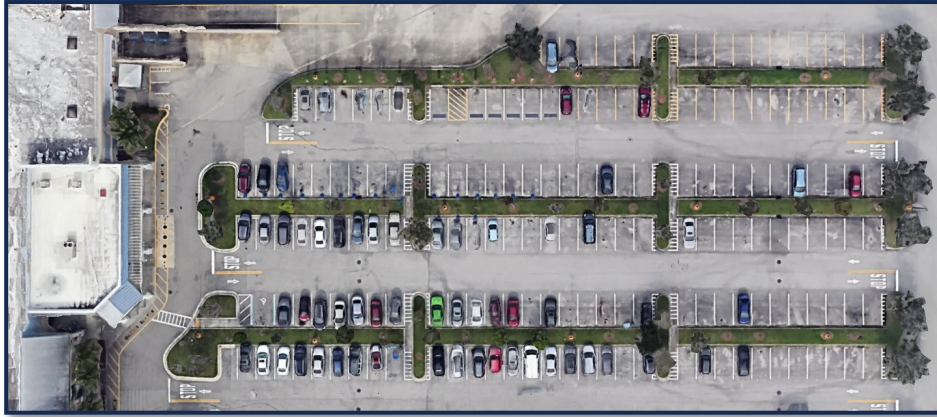
Other onsite work would include restriping of crosswalks, pavement markings, updates to traffic pedestrian, and wayfinding signage throughout Walmart's existing parking lot and property.

Project Site Plan

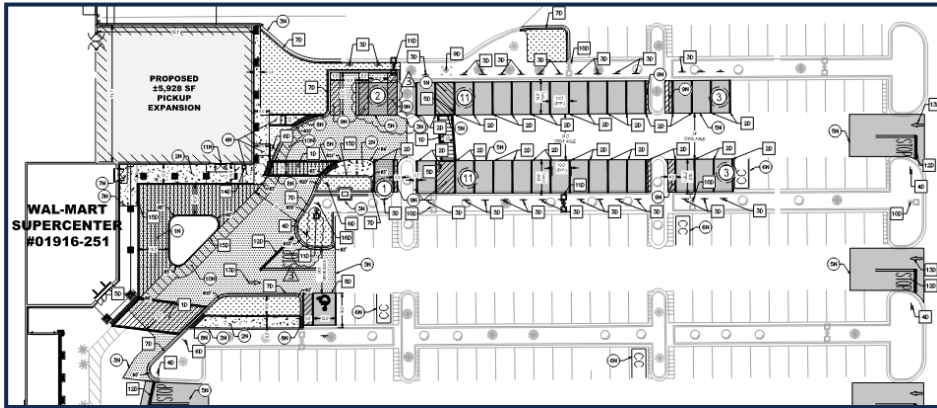
City of Coconut Creek Overall Site Plan



Internal Circulation Site Plan



Existing Conditions



Proposed Improvements





Codes Met

- City of Coconut Creek Municodes



Outside Approvals

- South Florida Water Management District
- Broward County Surface Water Management





Thanks!

Do you have any questions?

Bowman
Walmart-Remodel@bowman.com
321-255-5434

