

LYONS ROAD DIRECTIONAL BORE

CITY OF COCONUT CREEK

**ABACO
ENGINEERING
INC.**
10100 W. Sample Rd. Suite 334
Coral Springs, FL 33065
Phone: (954) 599-3726
Fax: (954) 692-9033
abacoengineering.com

AZITA O. BEHARAD, P. E.
P.E. NO. 44388
STATE OF FLORIDA

INDEX

C-0 COVER SHEET
C-1 PLAN PROFILE SHEET

NOTES & SPECIFICATIONS

-INFORMATION SHOWN ON DRAWINGS REGARDING THE PRESENCE, CHARACTER AND LOCATION OF EXISTING UTILITIES IS A SCHEMATIC REPRESENTATION TAKEN FROM THE BEST ACCURACY OF THIS INFORMATION. THERE IS NO CERTAINTY OF THE ACCURACY OF THIS INFORMATION. UTILITIES AND STRUCTURES NOT SHOWN MAY BE ENCOUNTERED.

-NO CONSTRUCTION SHALL COMMENCE PRIOR TO THE LOCATION OF ALL UNDERGROUND UTILITIES. UTILITY LOCATION SERVICE: 1-800-432-4770.

-USE THE "ACUPUNCTURE TYPE MISSILE" FOR ALL SIDEWALK CROSSINGS AND DRIVEWAY CROSSINGS UP TO 40' MAXIMUM.

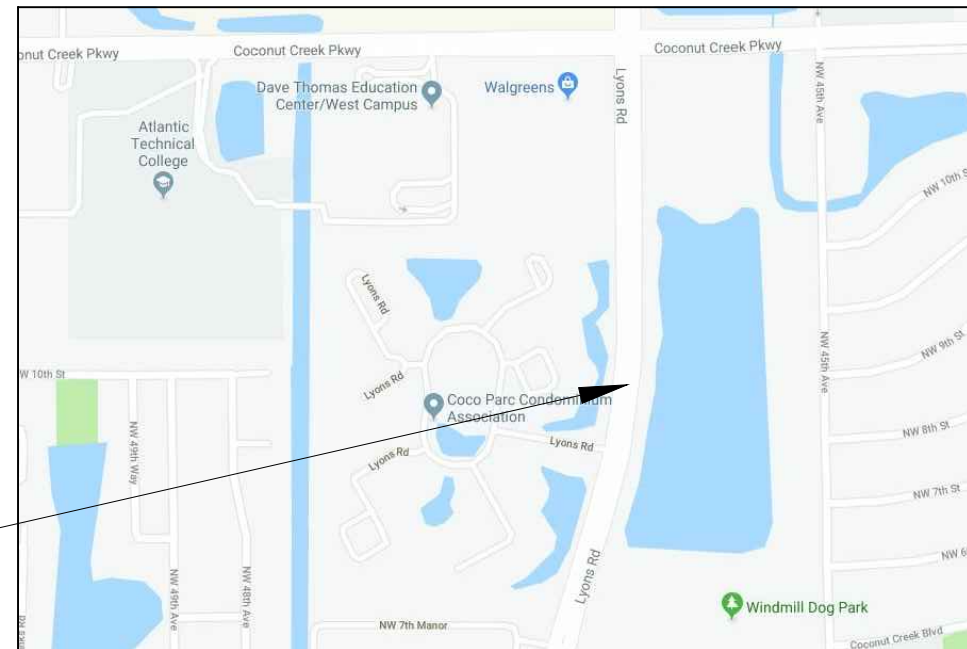
-ALL OPEN ASPHALT CUTS SHALL BE RESTORED TO BROWARD AUTHORITY "MINIMUM STANDARDS". FULL LANE RESTORATION, FOR PERPENDICULAR CUTS 20'-50' FROM TRENCH ON EACH DIRECTION ON TRAVEL LANES; 10' ON EACH DIRECTION FOR TURN LANES.

-EXACT LOCATION OF TRENCH MAY VARY DUE TO THE LOCATION OF EXISTING UTILITIES AND OTHER HAZARDS.

-NO OPEN TRENCH TO BE LEFT OVERNIGHT, UNLESS THERE IS A UTILITY DAMAGED. IN THAT CASE, CONTRACTOR SHALL PLACE A SAFETY NETTING AROUND OPEN TRENCH.

-RESTORATION: ANY DAMAGE WITHIN THE PUBLIC RIGHT OF WAY, UTILITY EASEMENTS OR PRIVATE PROPERTY WILL BE REPAIRED AS DIRECTED BY PERMITTING AGENCY.

PROJECT LOCATION



LYONS ROAD DIRECTIONAL BORE
CITY OF COCONUT CREEK

DRAWN BY: DR
CHECKED BY: AB
DATE: 05/21/19

REVISIONS:
△
△
△
△
△
△

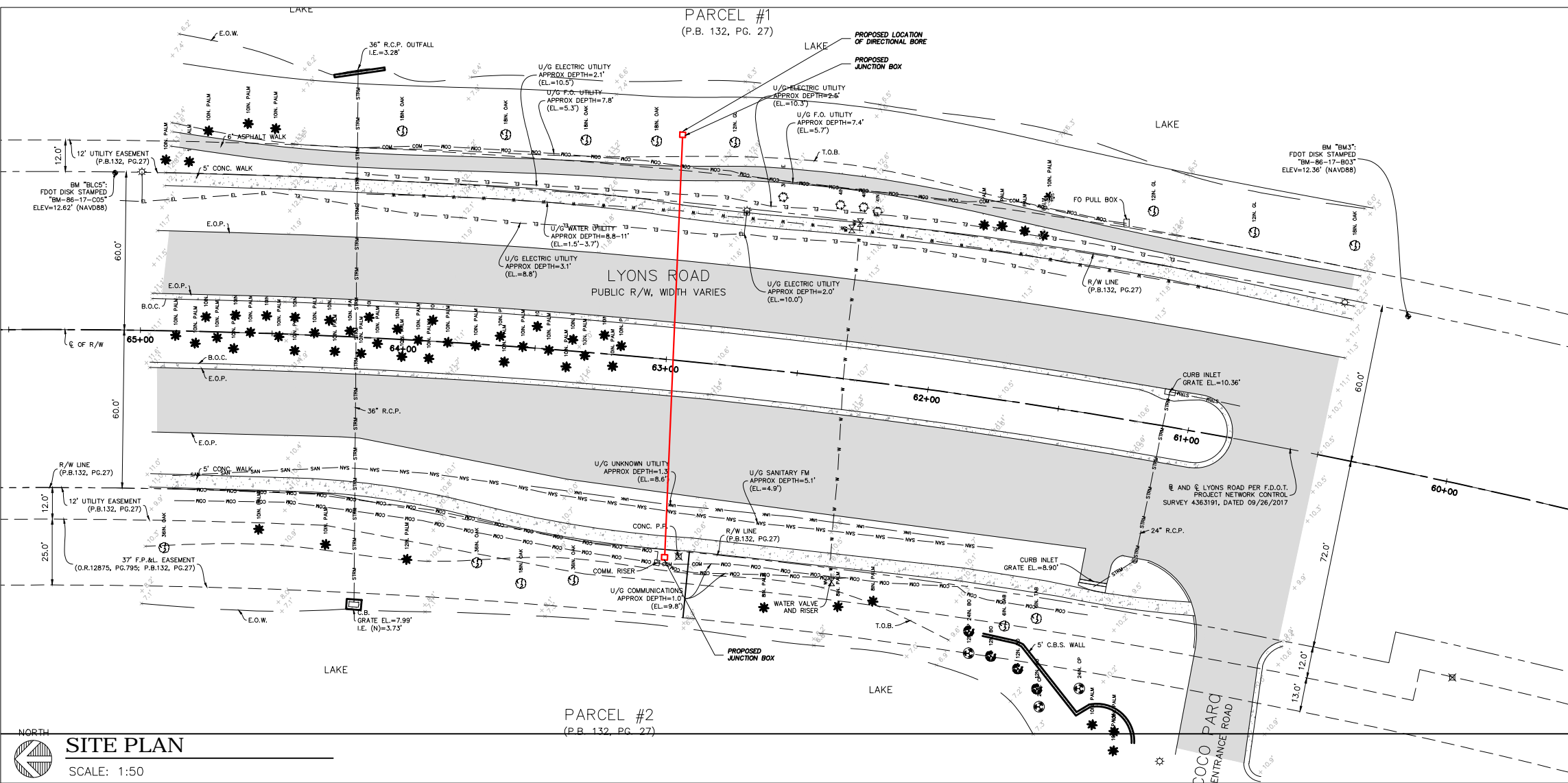
PROJECT #

SHEET

C-0

COVER SHEET

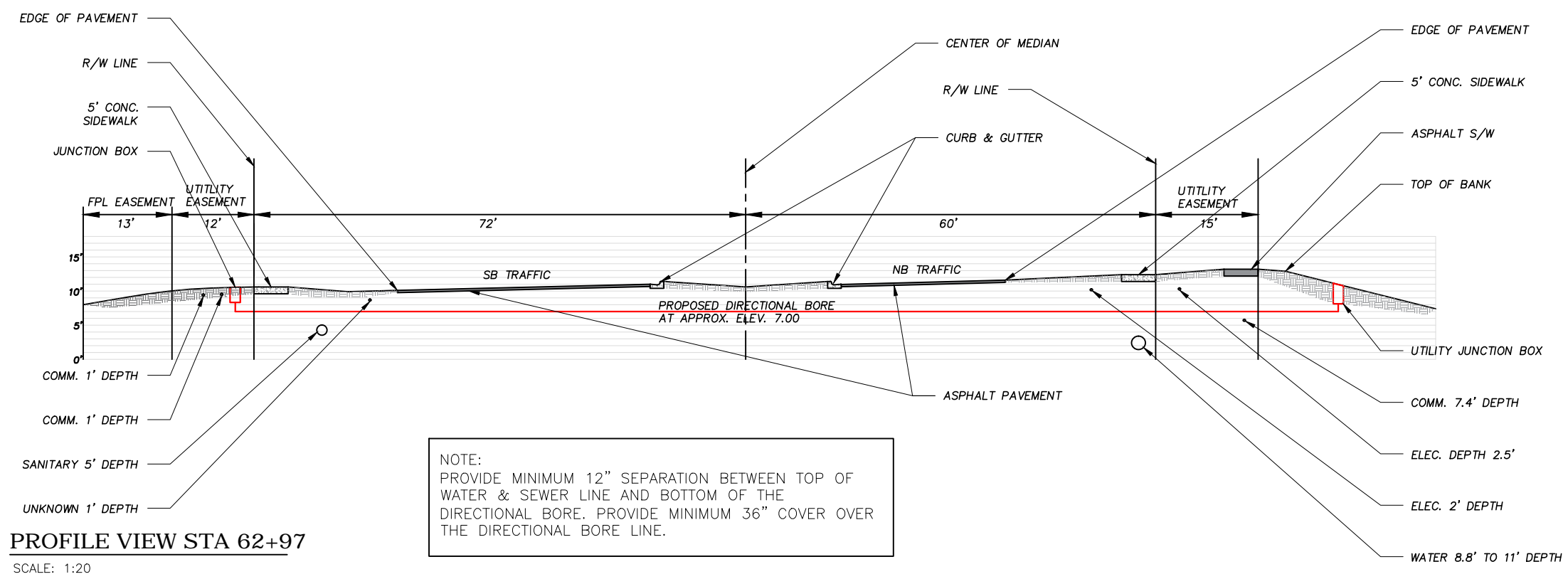




- ABBREVIATIONS LEGEND**
- P.O.C. = POINT OF COMMENCEMENT
 - P.O.B. = POINT OF BEGINNING
 - I.P. = IRON PIPE
 - I.R. = IRON ROD
 - C.M. = CONCRETE MONUMENT
 - FND. = FOUND
 - TYP. = TYPICAL
 - P.R.M. = PERMANENT REFERENCE MONUMENT
 - P.C.P. = PERMANENT CONTROL POINT
 - B.M. = BENCHMARK
 - EL. = ELEVATION
 - F.F.E. = FINISHED FLOOR ELEVATION
 - S.F. = SQUARE FEET
 - E.O.W. = EDGE OF WATER
 - U.E. = UTILITY EASEMENT
 - F.P.&L. = FLORIDA POWER AND LIGHT COMPANY
 - F.D.O.T. = FLORIDA DEPARTMENT OF TRANSPORTATION
 - C.B.S. = CONCRETE BLOCK CONSTRUCTION
 - S/T. = SEPTIC TANK
 - D/F. = DRAINFIELD
 - P.P. = POWERPOLE
 - M.H. = MANHOLE
 - C.B. = CATCH BASIN
 - F.H. = FIRE HYDRANT
 - E.O.P. = EDGE OF PAVEMENT
 - B.O.C. = BACK OF CURB
 - R/W. = RIGHT OF WAY
 - CL. = CENTERLINE
 - PL. = PROPERTY LINE
 - (P) = PLAT DATA
 - (L) = LEGAL DESCRIPTION DATA
 - (M) = MEASURED DATA
 - (C) = CALCULATED DATA
 - SEC. = SECTION
 - TWP. = TOWNSHIP
 - RGE. = RANGE
 - R. = RADIUS
 - L. = LENGTH
 - Δ = CENTRAL ANGLE
 - C. = CHORD
 - CB. = CHORD BEARING
 - N.R. = NON-RADIAL
 - P.T. = POINT OF TANGENCY
 - P.C. = POINT OF CURVATURE
 - P.R.C. = POINT OF REVERSE CURVATURE
 - P.C.C. = POINT OF COMPOUND CURVATURE
 - STA. = STATION
 - F.B. = FIELDBOOK
 - P.B. = PLAT BOOK
 - O.R. = OFFICIAL RECORDS BOOK
 - PG. = PAGE
 - U/G. = UNDERGROUND
 - F.O. = FIBER OPTIC CABLE
 - FM. = FORCE MAIN
 - RCP. = REINFORCED CONCRETE PIPE
 - BO. = BLACK OLIVE
 - CP. = CABBAGE PALM
 - GL. = GUMBO LIMBO
 - TAB. = TABEBUIA

- SYMBOLS LEGEND**
- ⊗ = CONC. POWER POLE
 - ⊗ = WATER VALVE
 - ⊗ = MANHOLE (STORM)
 - ⊗ = COMMON DECIDUOUS TREE
 - ⊗ = OTHER DECIDUOUS TREE
 - ⊗ = PINE TREE
 - ⊗ = CABBAGE PALM
 - ⊗ = OTHER PALM
 - COM — = COMMUNICATIONS
 - EL — = ELECTRIC
 - W — = WATER LINE
 - SAN — = SANITARY SEWER
 - STR — = STORM SEWER
 - — — = UNKNOWN UNDERGROUND LINE

SITE PLAN
SCALE: 1:50



NOTE:
PROVIDE MINIMUM 12" SEPARATION BETWEEN TOP OF WATER & SEWER LINE AND BOTTOM OF THE DIRECTIONAL BORE. PROVIDE MINIMUM 36" COVER OVER THE DIRECTIONAL BORE LINE.

NOTE:
LOCATION AND DEPTH OF ALL EXISTING UTILITIES ARE FROM BEST AVAILABLE INFORMATION. CONTRACTOR SHALL VERIFY AND CONFIRM THAT THE PROPOSED DIRECTIONAL BORE ELEVATIONS DO NOT CONFLICT WITH EXISTING UNDERGROUND UTILITIES.



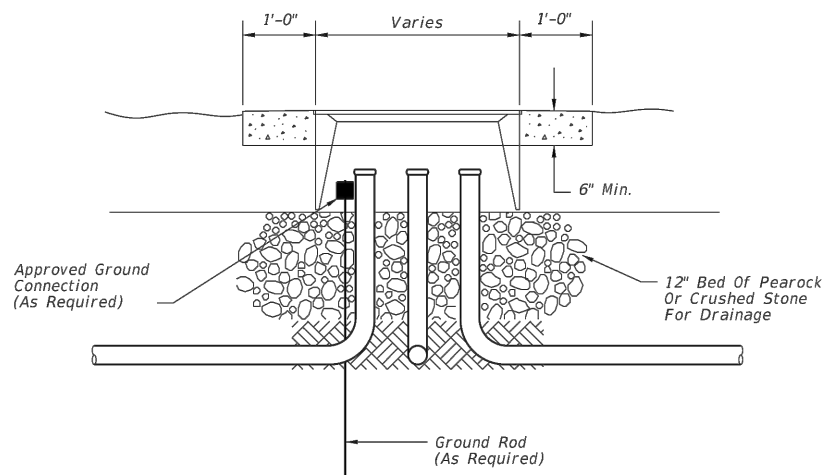
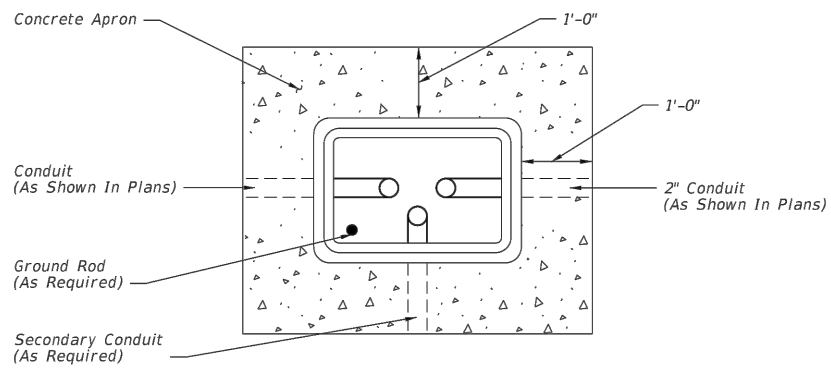
ABACO ENGINEERING INC.
10100 W. Sample Rd. Suite 334
Coral Springs, FL 33065
Phone: (954) 599-3726
Fax: (954) 692-9033
abacoengineering.com

AZITA O. BEHARMI, P. E.
P.E. NO. 44388
STATE OF FLORIDA

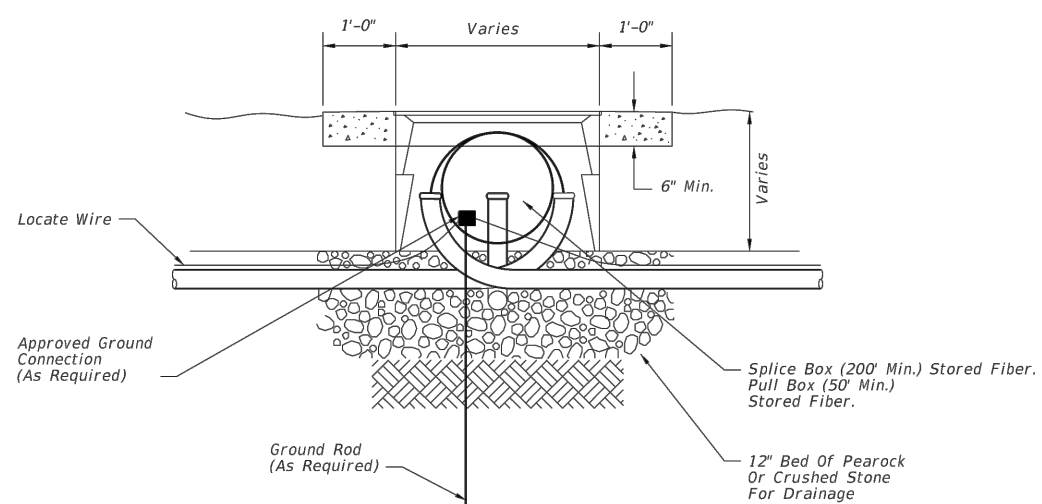
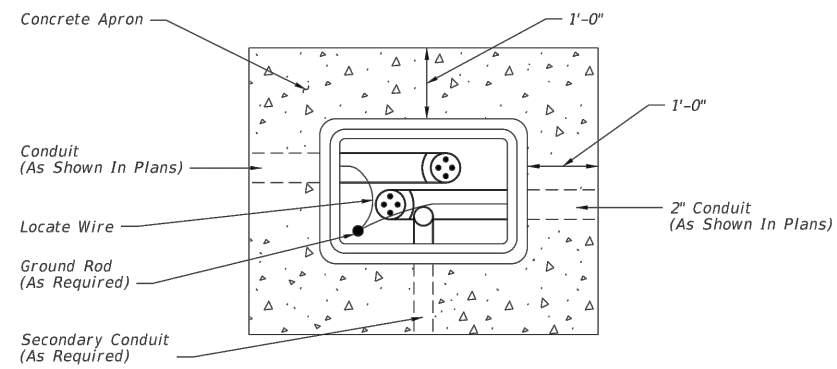
LYONS ROAD DIRECTIONAL BORE
CITY OF COCONUT CREEK

DRAWN BY: DR
CHECKED BY: AB
DATE: 05/21/19
REVISIONS:

PROJECT #
SHEET
C-1
PLAN PROFILE SHEET



PULL BOX



Rectangular boxes are depicted. Round fiber optic splice boxes and lids are allowed.

FIBER OPTIC BOX

- Boxes shall not be installed in roadways or driveways.
- Boxes shall be on the Approved Product List (APL).
- Boxes shall be installed flush with the finished grade surface.
- Fiber Optic splice boxes shall be provided with cable hanger racks designed to support cables and splice enclosures. Cost of racks to be included in cost of splice box.
- Fiber optic boxes shall contain only Fiber Optic Cable, Conduit, and Locate Wire.
- Conduit center line shall be aligned to top edge of box to facilitate cable pulling.
- All boxes shall have 1'-0" wide (min) concrete apron. Concrete for concrete aprons shall be Class NS with a minimum strength at 28 days of $f'c=2.5$ Ksi. Aprons shall be sloped away from box. Cost of apron to be included in the cost of each box.
- Prevent the ingress of Water, Dirt, Sand, and other foreign materials into the conduit prior to, during and after construction using a foam-sealing material, rubber plug, or other device designed for this application and approved.

C:\projects\standards\roadway\17700-s\17700-01.dgn

sm970re

4:09:29 PM

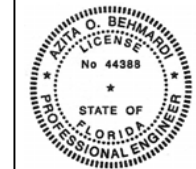
6/24/2013

LAST REVISION	DESCRIPTION:	INDEX NO.	SHEET NO.
07/01/13		17700	1 of 1



FDOT 2014 DESIGN STANDARDS

PULL AND SPLICE BOX



THIS ITEM HAS BEEN ELECTRONICALLY SIGNED AND SEALED BY AZITA BEHMARDI, P.E. ON USING A SHA AUTHENTICATION CODE.
 PRINTED COPIES OF THIS DOCUMENT ARE NOT CONSIDERED SIGNED AND SEALED AND THE SHA AUTHENTICATION CODE MUST BE VERIFIED ON ANY ELECTRONIC COPIES.

LYONS ROAD DIRECTIONAL BORE

CITY OF COCONUT CREEK

DRAWN BY: DR
 CHECKED BY: AB
 DATE: 05/21/19
 REVISIONS:

- △
- △
- △
- △
- △

PROJECT #

SHEET

C-2

DETAILS