

LYONS ROAD - MAINTENANCE AREA #1

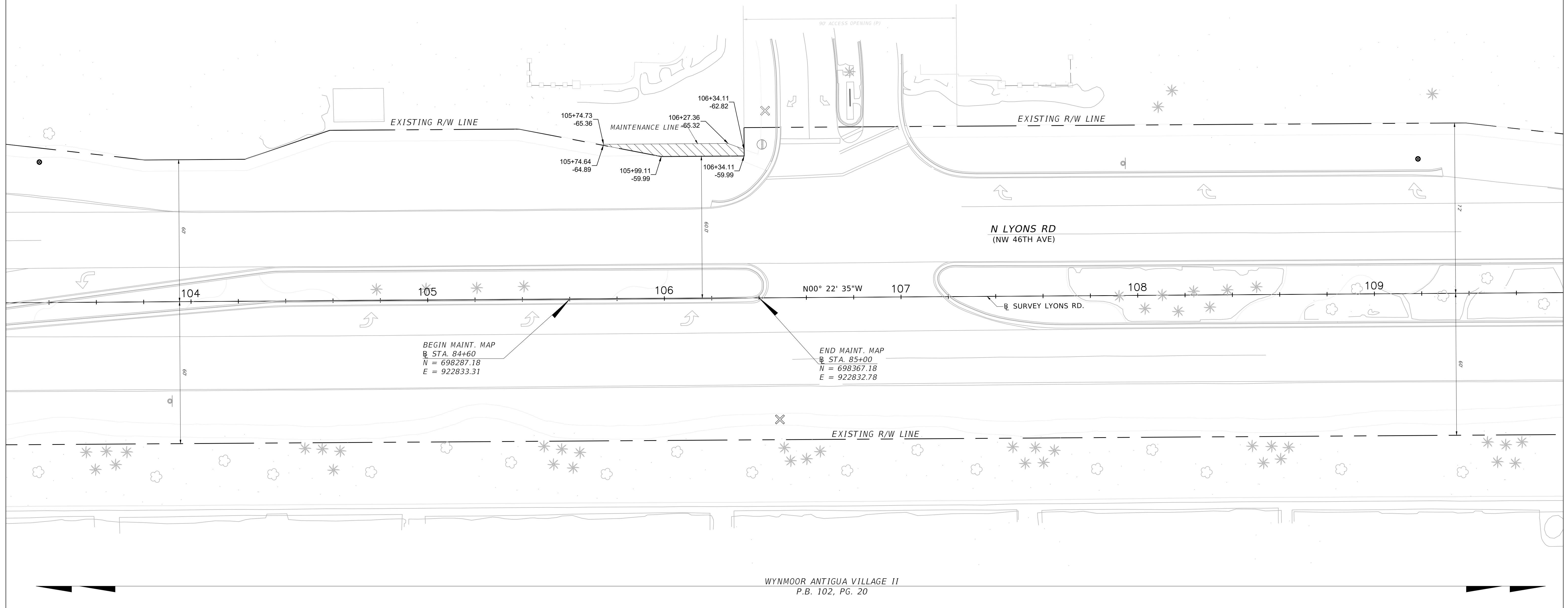
MAINTENANCE MAP	CITY OF COCONUT CREEK									BY	DATE	FED. PROJ. N/A	SECTION: N/A	MAP PREPARED BY: NI	SPECIFIC PURPOSE SURVEY			
										PRELIM	NI			06/19/2019	LYONS ROAD	BROWARD COUNTY	COMPANY: CPC, INC.	SCALE: 1" = 20'
										FINAL	LMC			06/19/2019	F.P. NO. N/A	SHEET 2 OF 4	L.B. No. 2936	
REVISION		BY	DATE	REVISION		BY	DATE	REVISION		BY	DATE	CHECKED	LMC	06/19/2019				



NORTH



LYONS WEST  
P.B. 137, PG. 40



BEGIN MAINT. MAP  
@ STA. 84+60  
N = 698287.18  
E = 922833.31

END MAINT. MAP  
@ STA. 85+00  
N = 698367.18  
E = 922832.78

WYNMOOR ANTIGUA VILLAGE II  
P.B. 102, PG. 20

LYONS ROAD - MAINTENANCE AREA #4

MAINTENANCE MAP

CITY OF COCONUT CREEK

REVISION	BY	DATE	REVISION	BY	DATE	REVISION	BY	DATE

	BY	DATE
PRELIM	NI	06/19/2019
FINAL	LMC	06/19/2019
CHECKED	LMC	06/19/2019

FED. PROJ. N/A  
LYONS ROAD

SECTION: N/A  
BROWARD COUNTY

MAP PREPARED BY: NI  
COMPANY: CPC, INC.  
L.B. No. 2936  
F.P. NO. N/A

SPECIFIC PURPOSE SURVEY  
SCALE: 1" = 20'  
SHEET 4 OF 4