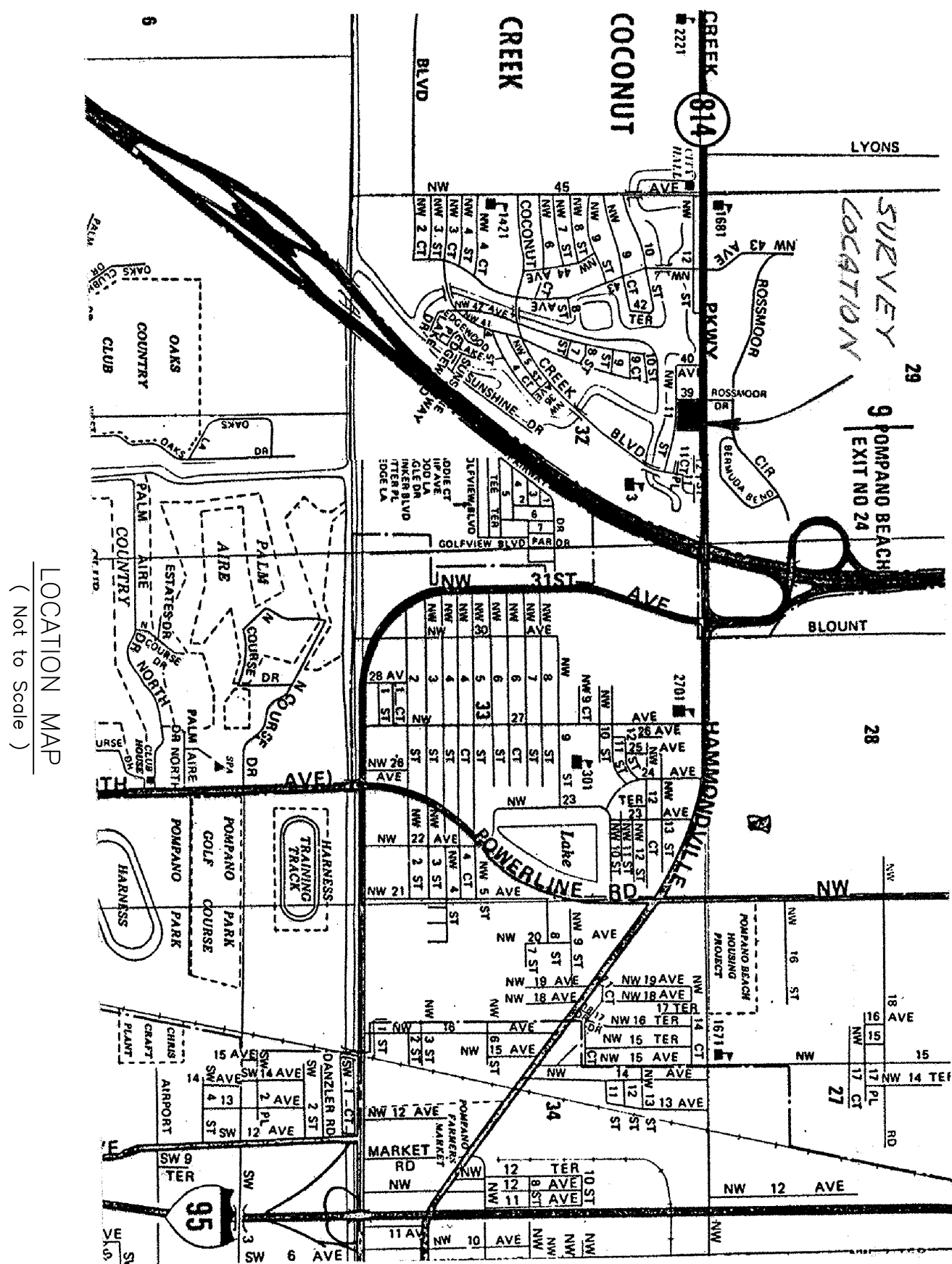
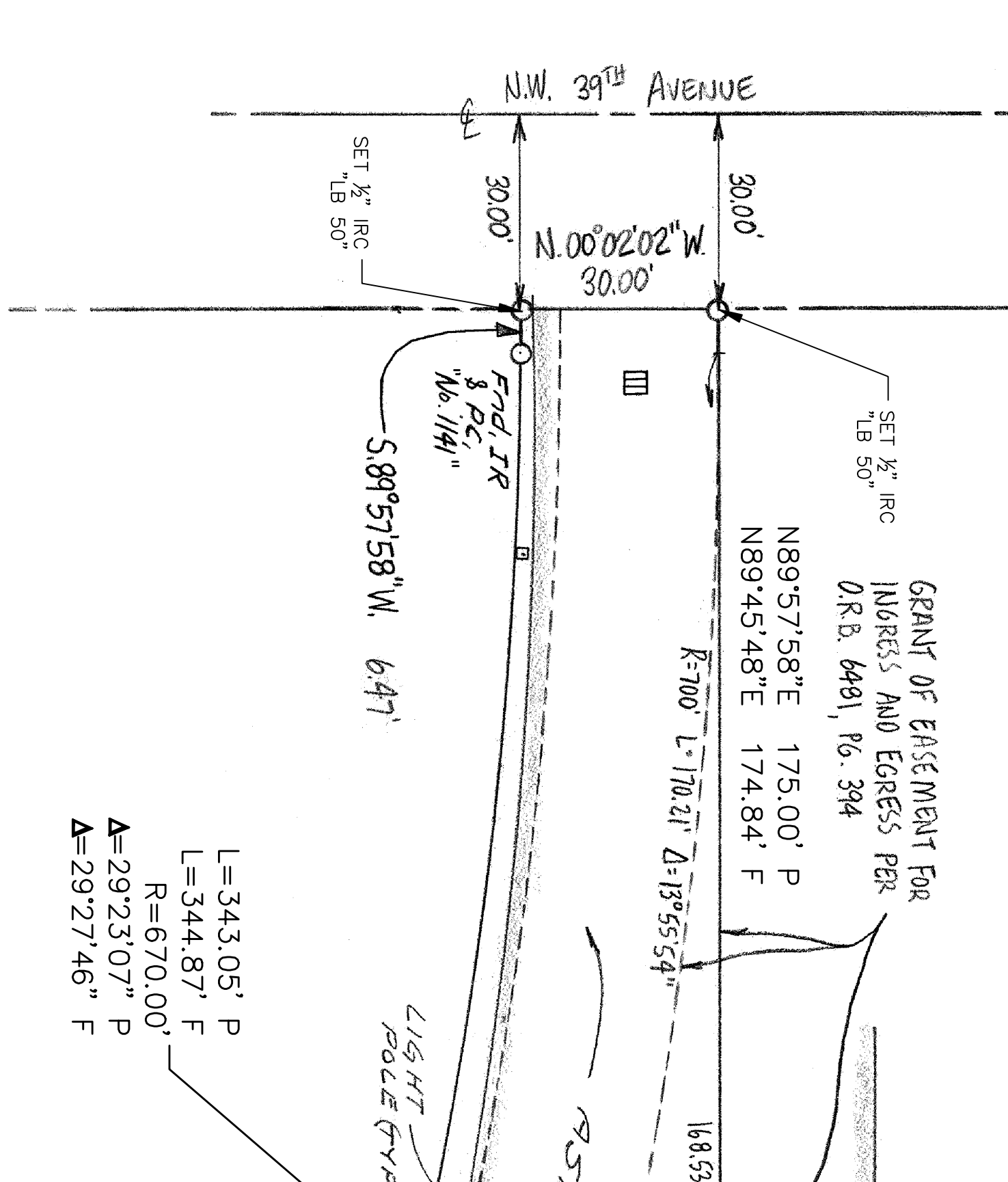


PROPERTY DESCRIPTION:
TRACT B, HI-RISE REALTY PLAT, ACCORDING TO THE MAP OR PLAT THEREOF, RECORDED IN PLAT BOOK 87, PAGE 50, OF THE PUBLIC RECORDS OF BROWARD COUNTY, FLORIDA.



PARCEL A PLAT
HI-RISE REALTY PLAT
PLAT BOOK 87, PAGE 50



ALTA/ACSM LAND TITLE SURVEY:
To: Coconut Creek Medical Plaza, LLC
J. Johnson, Chase Bank, LLC
Michigan Title Insurance Company,
Chicago Title Insurance Company.

This is to certify that this map or plat and the survey on which it is based were made in accordance with the 2011 Minimum Standard Detail Requirements for ALTA/ACSM Land Title Surveys, jointly established and adopted by ALTA and NSPS, and includes items [NONE] of Table A thereof. The field work was completed on 14 MAY 2012.

Date of Plat or Map: _____

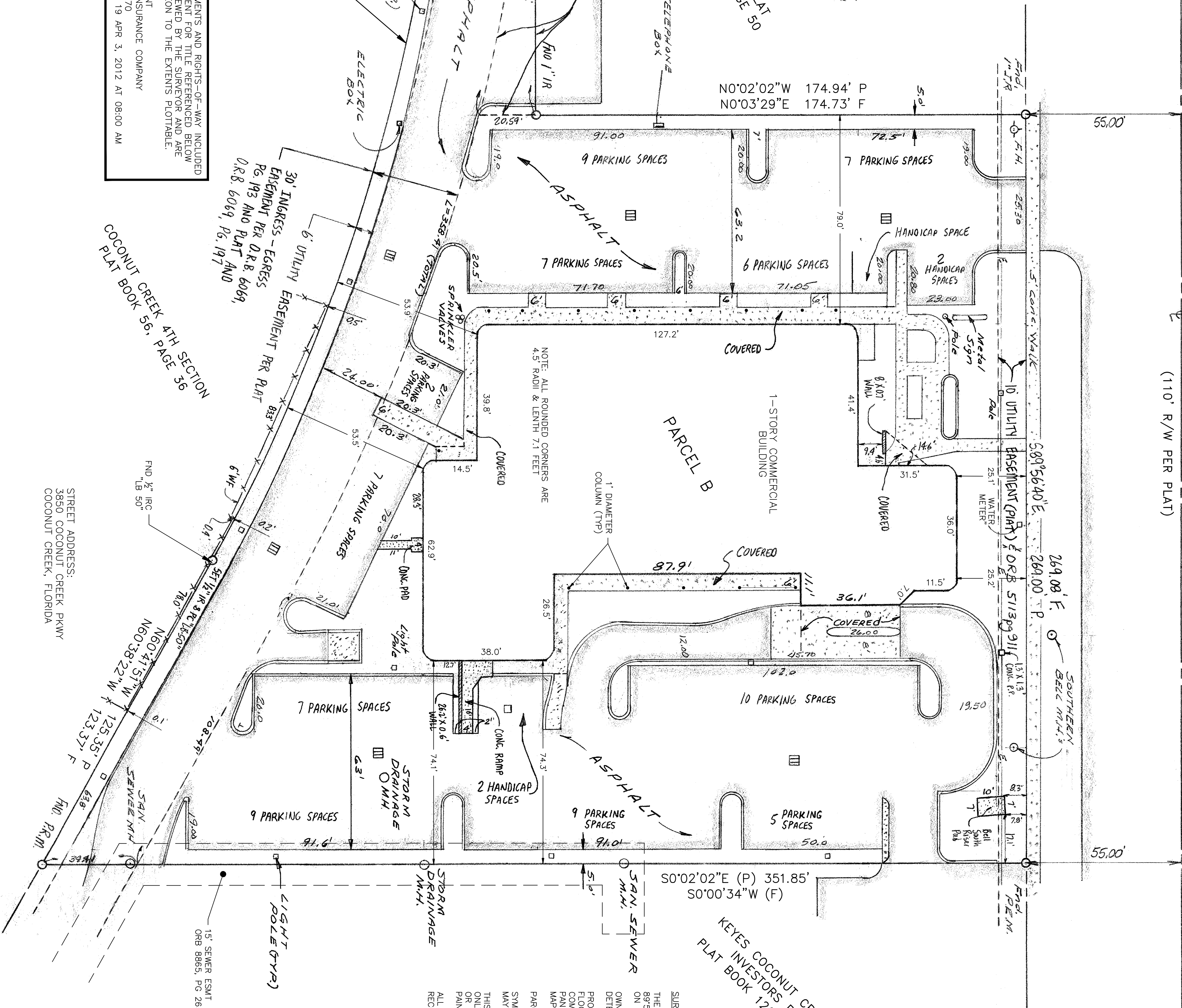
SCOTT A. RED
Professional Surveyor & Mapper No. 6258
State of Florida
Not Valid Without the Signature And The Original Raised Seal Of A
Florida Licensed Surveyor And Mapper.

NOTE: ALL EASEMENTS AND RIGHTS-OF-WAY INCLUDED IN THE COMMITMENT FOR TITLE REFERENCED BELOW HAVE BEEN REVIEWED BY THE SURVEYOR AND ARE REFLECTED HEREON TO THE EXTENT PLOTTABLE.
TITLE COMMITMENT
CHICAGO TITLE INSURANCE COMPANY
FILE #: FL2012470
EFFECTIVE DATE: 19 APR 3, 2012 AT 08:00 AM

COCONUT CREEK 4TH SECTION
PLAT BOOK 56, PAGE 36

STREET ADDRESS:
3850 COCONUT CREEK PKWY
COCONUT CREEK, FLORIDA

Parcel A and B details including bearings and distances:
N.00°02'02\"/>



KEYES COCONUT CREEK 4
PLAT BOOK 126, PAGE 11

SURVEY NOTES:

THE BEARINGS REFERENCED HEREON ARE BASED ON A BEARING OF SOUTH 89°54'40\"/>

PROPERTY LOCATED IN FLOOD ZONE X
FLOOD INSURANCE RATE MAP INFORMATION
COMMUNITY NO.: 120051
DATE: 01/13/2005
MAP REVISED: AUGUST 18, 1992

PARCEL AREA 82,212 SQUARE FEET (1.887 ACRES)
SWAGS HAVE BEEN PLOTTED AT THE CENTER OF THE FIELD LOCATION AND MAY NOT REPRESENT THE ACTUAL SIZE OR SHAPE OF THE FEATURE.
THIS SURVEY IS LIMITED TO THE LOCATION OF ABOVE GROUND IMPROVEMENTS ONLY. UNDERGROUND FOUNDATIONS AND ENCROACHMENTS WERE NOT LOCATED OR SHOWN HEREON. ANY SUCH ENCROACHMENTS WERE LOCATED AS PAINT MARKS ON THE GROUND, AS MARKED BY OTHERS.
ALL INSTRUMENTS OF RECORD NOTED HEREON REFER TO THE PUBLIC RECORDS OF BROWARD COUNTY UNLESS NOTED OTHERWISE.

LEGEND

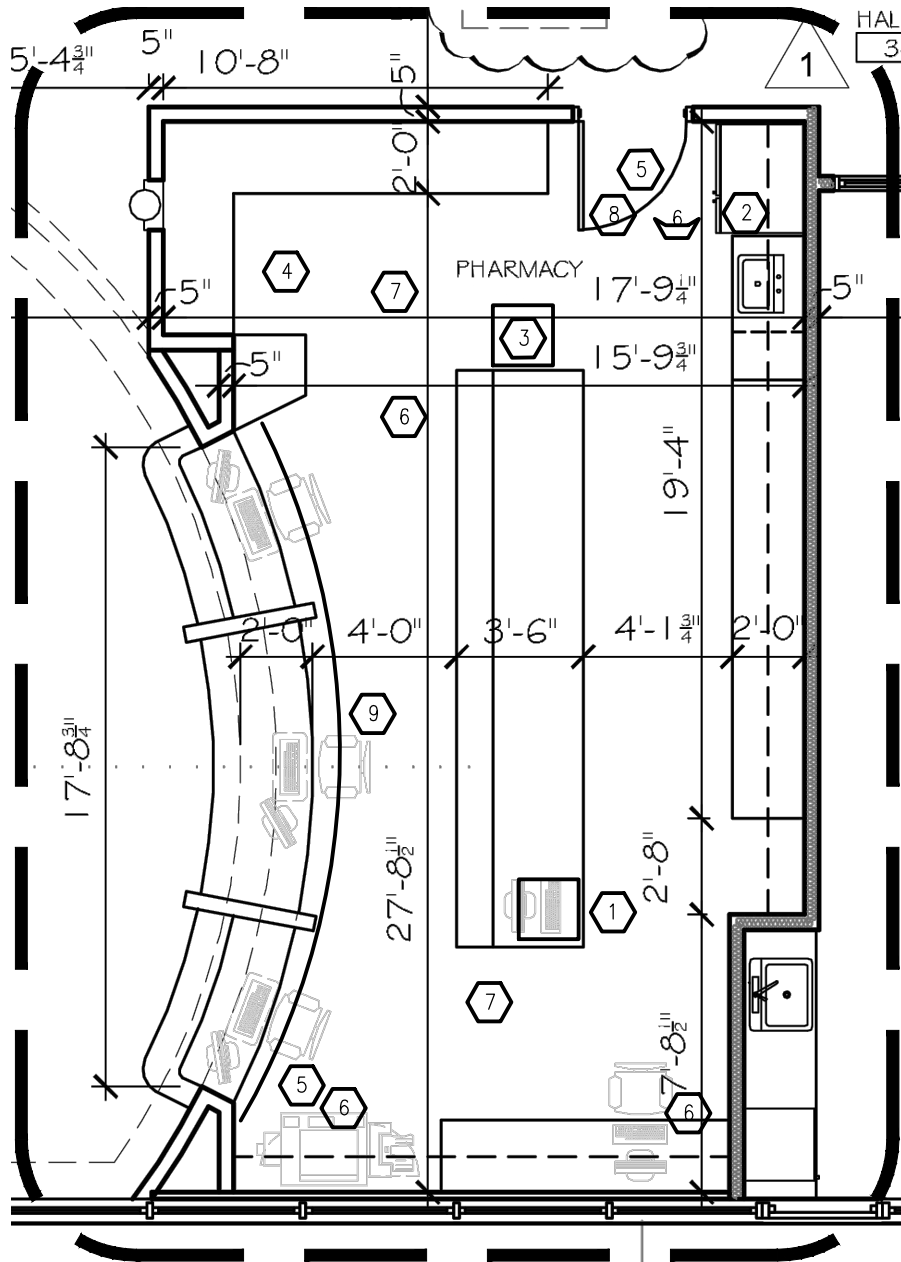
- BLDG = Building
- C = Calculated
- CATV = Cable Television Riser
- CL = Centerline
- CLF = Chain Link Fence
- CBS = Concrete Block Structure
- CM = Concrete Monument
- CONC = Concrete
- CP = Concrete Pole
- A = Central Angle
- DRNG = Driveway
- ESMT = Easement
- F = Elevation
- F = Measured in field or calculated
- FH = Field measurements
- FND = Found
- FPL = Florida Power & Light
- HH = Handhole
- IP = Iron Pipe
- IR = Iron Rod
- IRC = Iron Rod & Plastic Cap
- L = Arc Length
- LH = Manhole
- NHS = Not to Scale
- N&D = Nail and Disc
- E- = Official Record Book
- PC = Plastic Cap
- PBCR = Palm Beach County Records
- PLTR = Plat
- PGP = Permanent Control Point
- PG = Page
- PP = Power Pole Reference Monument
- PRM = Permanent Monument
- SRV = Sanitary
- SBR = Southern Bell Riser
- STW = Stipewalk
- R = Right-of-Way
- R/W = Right-of-Way
- UE = Utility Easement
- WF = Wood Pole
- WP = Water Pole
- WV = Water Valve

BOUNDARY SURVEY
DESCRIBED HEREON

JOHN A. GRANT, JR., INC.

CONSULTING ENGINEERS
3333 NORTH FEDERAL HIGHWAY
SUITE 300
FORT LAUDERDALE, FLORIDA 33309
PH. NO. 561-3333
FAX. NO. 561-395-3315
LICENSED BUSINESS NO. LB 50

MADE _____ SRR DATE 5/14/12 F.B. 645 _____ P.G. 32
CHECKED _____ DATE _____ SCALE 1" = 20'
JOB NO. 35-100-5214 SHEET 1 OF 1



PLAN NOTES

- 1 ALL FEATURES DEPICTED IN THIS PLAN SUCH AS WALLS, DOORS, COUNTERS, REFRIGERATOR, SINK, CUSTOMER ADA COUNTER, SECURITY BARS, ELECTRICAL, LIGHTING, ETC. ARE ALL EXISTING FEATURES THAT ARE TO REMAIN
2. NEWLY PROVIDED ITEMS ARE THE FLOOR INSTALLED SAFE, THE VIDEO RECORDER AND THE (4) CAMERAS. AS WELL AS THE FLOOR MINI-FRIDGE.

PHARMACY PLAN

SCALE: 3/16" = 1'-0"



LEGEND

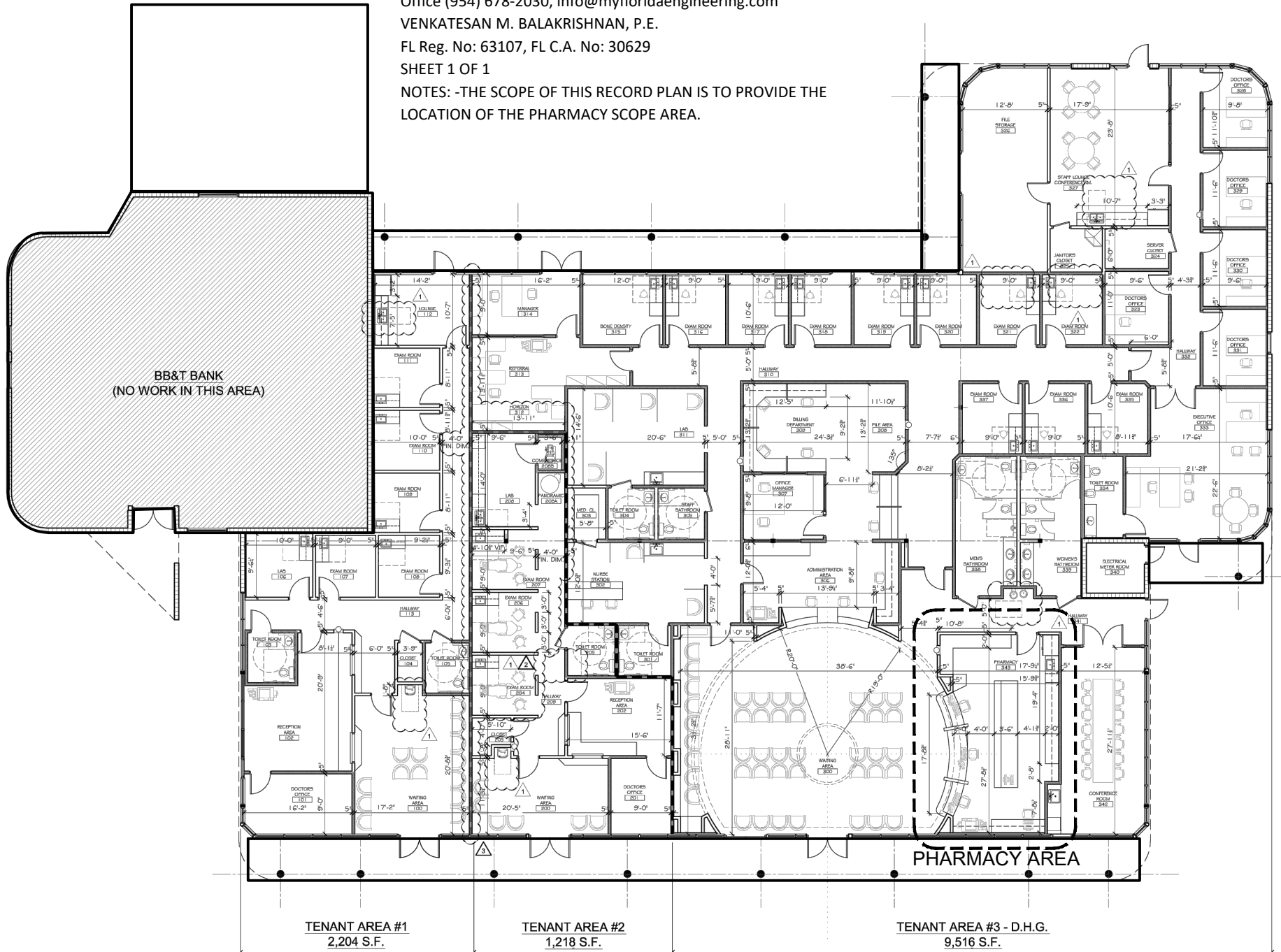
ITEM	QTY.	REMARKS
1 SAFE W/CODE ACCESS	1	GENERIC FLOOR MOUNTED
2 PRODUCT REFRIGERATOR (FULL SIZE)	1	GENERIC 20 CU. FT.
3 PRODUCT REFRIGERATOR (MINI)	1	GENERIC 4 CU. FT.
4 CAMERA RECORDER (PHARMACY)	1	HIKVISION 8 PORT POE TYPE.
5 CAMERA (CLINIC)	2	HI. DEF. POE TYPE
6 CAMERA (PHARMACY)	4	HI. DEF. POE TYPE
7 MOTION SENSORS	2	GENERIC CONNECTING TO BLDG. BURG. ALARM
8 ENTRY DOOR	1	CODE LOCK & KEYED DEADBOLT
9 SECURITY BARS	1	FOLDING TYPE FLOOR TO CEILING W/AUDIBLE ALARM AND DEADBOLD LOCKS

Frontier Engineering Development, LLC
P.O. Box 222023, Hollywood, FL 33022
Office (954) 678-2030, info@myfloridaengineering.com
VENKATESAN M. BALAKRISHNAN, P.E.

FL Reg. No: 63107, FL C.A. No: 30629

SHEET 1 OF 1

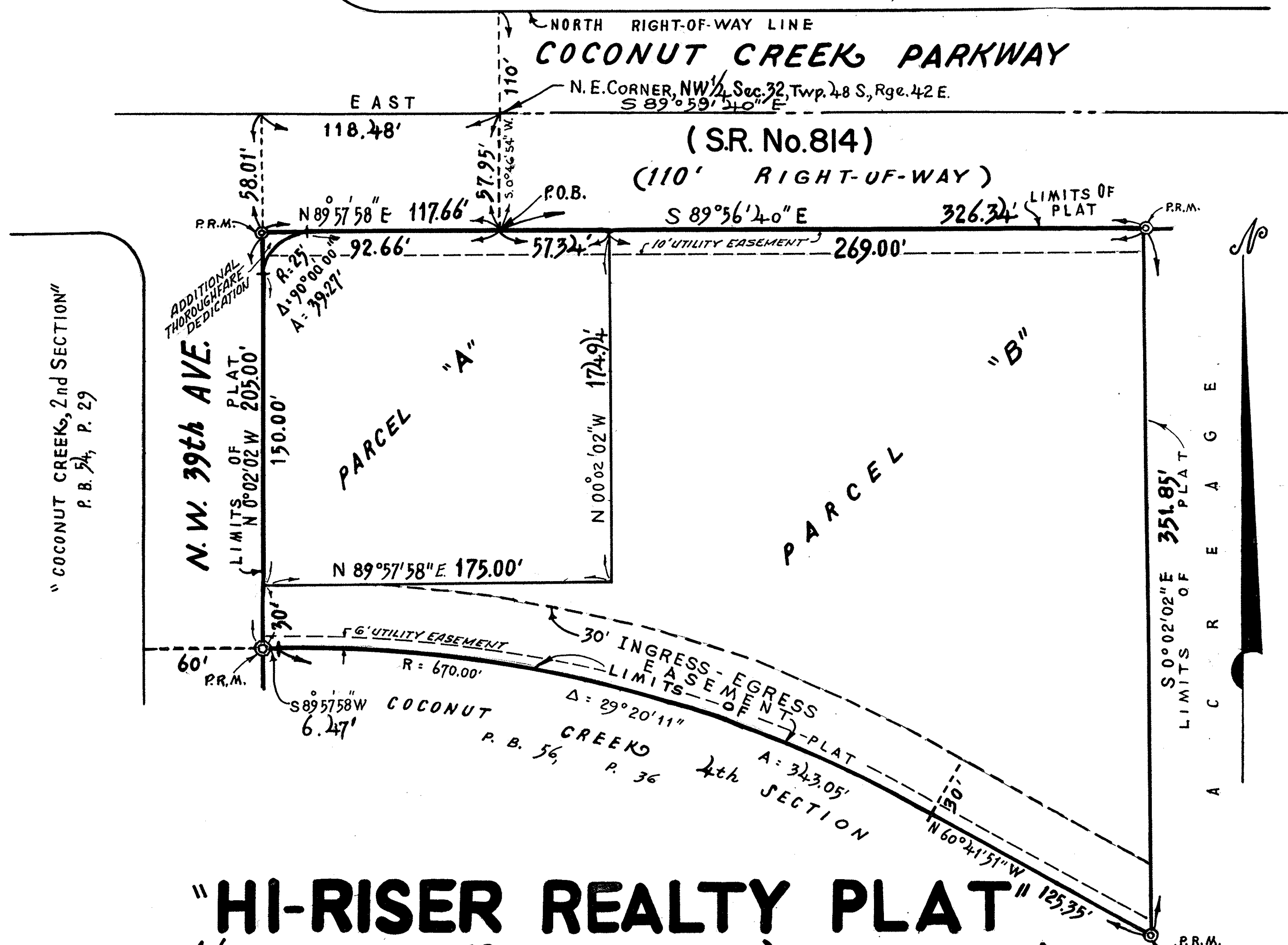
NOTES: -THE SCOPE OF THIS RECORD PLAN IS TO PROVIDE THE
LOCATION OF THE PHARMACY SCOPE AREA.



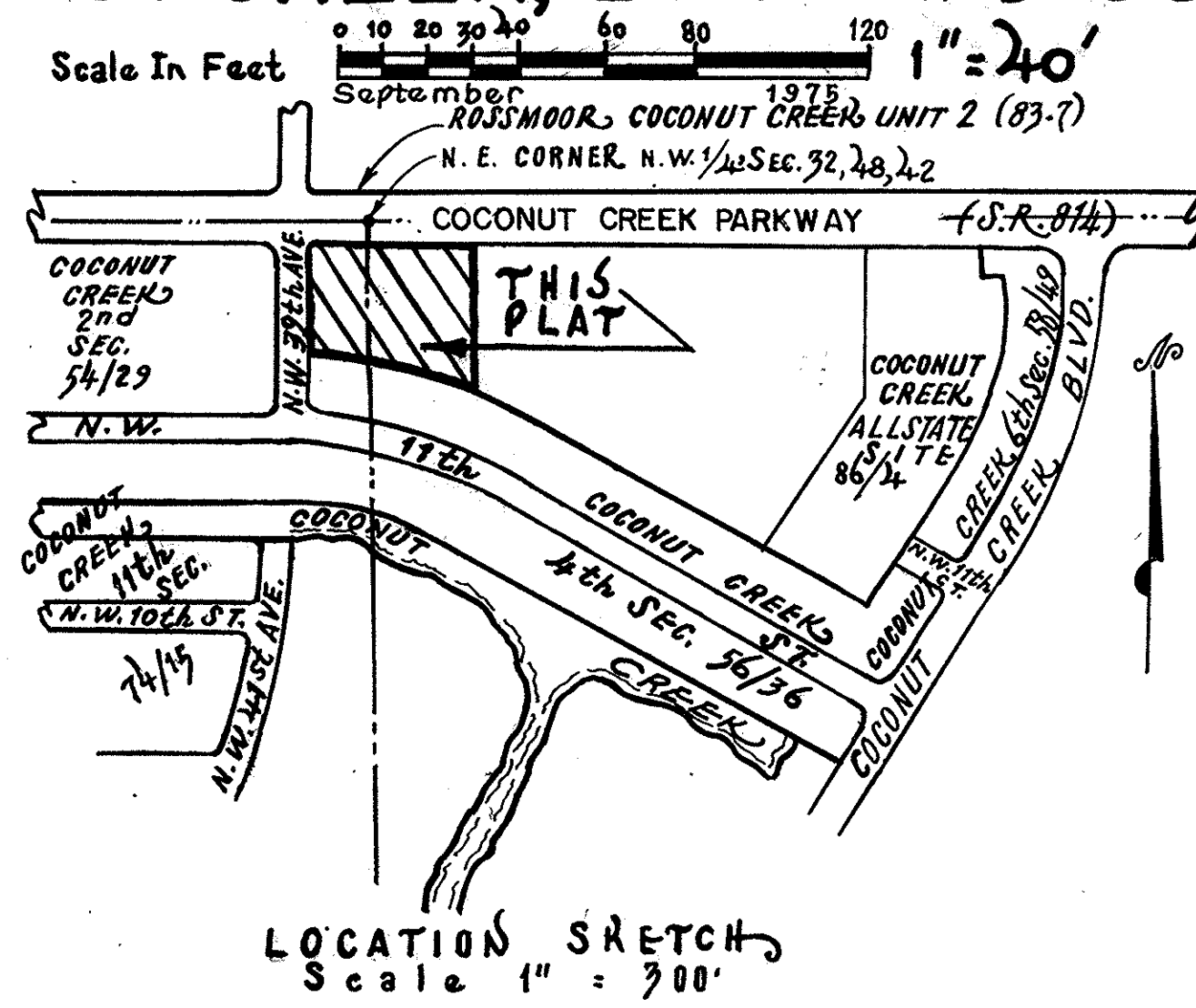
Coconut Creek Medical Pharmacy

3850 COCONUT CREEK PARKWAY, COCONUT CREEK, FL 3306

"ROSSMOOR COCONUT CREEK, UNIT 2" P. B. 83, P. 7



"HI-RISER REALTY PLAT"
 IN N 1/2 SECTION 32, TOWNSHIP 48S, RANGE 42E.
 CITY OF COCONUT CREEK, BROWARD COUNTY, FLORIDA



P.R.M. NOTES
 ⊙ Indicates Permanent Reference Monuments.
 Bearings Refer To An Assumed Meridian.

COCONUT CREEK WATER MANAGEMENT DISTRICT
 THIS IS TO CERTIFY: That the Coconut Creek Water Management District has approved and accepted this plat for record this 16 day of Oct, 1975.
 By: Raymond A. Jones Chairman
Garold L. Smith Secretary - Treasurer.

DEDICATION
 STATE OF FLORIDA SS KNOW ALL MEN BY THESE PRESENTS: That Ralph Palaia, as Trustee, owner of the land described and shown as included in this Plat, has caused said land to be subdivided and platted as hereon shown. Said Plat to be known as "HI-RISER REALTY PLAT". The thoroughfare is hereby dedicated to the perpetual use of the public in fee simple. All easements are hereby dedicated to the perpetual use of the public for purposes as indicated.
 IN WITNESS WHEREOF: I have hereunto set my hand in the City of Ft. Lauderdale, County of Broward, State of Florida, this 15th day of Sept, 1975.
 WITNESS: Suzette Johnson
 WITNESS: Carl McLaughlin
 RALPH PELAIÁ Ralph Palaia TRUSTEE

ACKNOWLEDGEMENT
 STATE OF FLORIDA SS I HEREBY CERTIFY: That on this day personally appeared before me, an officer duly authorized COUNTY OF BROWARD by law to administer oaths and take acknowledgements, Ralph Palaia as Trustee, to me well known to be the individual described in, and who executed the foregoing Dedication, and he acknowledged before me, that he executed the same, freely and voluntarily for purposes and uses therein expressed.
 WITNESS: My hand and official seal in the City of Ft. Lauderdale, County of Broward, State of Florida, this 15th day of SEPTEMBER 1975.
 My Commission Expires: MAY 16, 1978
Marion R. Cuond NOTARY PUBLIC STATE OF FLORIDA

DEDICATION
 STATE OF FLORIDA SS KNOW ALL MEN BY THESE PRESENTS: That Alec P. Courtelis and Donald L. Smith, as Trustees, owners of the land described and shown as included in this Plat, have caused said land to be subdivided and platted as hereon shown. Said Plat to be known as "HI-RISER REALTY PLAT". The thoroughfare is hereby dedicated to the perpetual use of the public in fee simple. All easements are hereby dedicated to the perpetual use of the public for purposes as indicated.
 IN WITNESS WHEREOF: We have hereunto set our hands in the City of Miami, County of Dade, State of Florida, this 16th day of September, 1975.
 WITNESS: Delores Wyatt
 WITNESS: Allen W. Shigley
 ALEC P. COURTELIS Alec P. Courtelis Trustee.
 DONALD L. SMITH Donald L. Smith Trustee.

ACKNOWLEDGEMENT
 STATE OF FLORIDA SS I HEREBY CERTIFY: That on this day personally appeared before me, an officer duly authorized by COUNTY OF DADE by law to administer oaths and take acknowledgements, Alec P. Courtelis and Donald L. Smith, Trustees, to me well known to be the individuals described in, and who executed the foregoing Dedication, and they acknowledged before me, that they executed the same, freely and voluntarily for purposes and uses therein expressed.
 WITNESS: My hand and official seal in the City of Miami, County of Dade, State of Florida, this 16th day of September, 1975.
 My Commission Expires: May 13, 1978
Brinda J. Adams NOTARY PUBLIC STATE OF FLORIDA

COCONUT CREEK PLANNING AND ZONING BOARD
 THIS IS TO CERTIFY: That this Plat is hereby approved for Record, this 2nd day of Oct, 1975 By: Joseph J. D'Amico, Chairman
 By: John J. D'Amico, Secretary
 CITY OF COCONUT CREEK
 STATE OF FLORIDA SS THIS IS TO CERTIFY: That this Plat has been approved and accepted for Record by the Council of CITY OF COUNTY OF BROWARD COCONUT CREEK, FLORIDA, in and by Resolution, adopted this 3rd day of October, 1975.
 IN WITNESS WHEREOF: The said Council has caused these Presents to be attested by its Council President, Mayor, and City Engineer and the Corporate Seal of said City to be affixed this 3rd day of October, 1975.
 This Plat has been approved by: Robert F. Bazyk COUNCIL PRESIDENT Robert F. Bazyk ACTING MAYOR
 this 3rd day of October, 1975. CITY ENGINEER: Anthony A. Nolan 10-21-75 Anthony A. Nolan, Fla. P.E. Reg. NO. 14084

BROWARD COUNTY PLANNING COUNCIL
 THIS IS TO CERTIFY: That the Broward County Planning Council approved this Plat with regard to Dedication of Rights-of-Way for Traffic Ways by Resolution, duly adopted this 30 day of October, 1975.
 By: Daniel D. Mauer, this 30 day of Oct, 1975.

BROWARD COUNTY DEPARTMENT OF TRANSPORTATION
 This Plat was approved and accepted for Record, this 28th day of JAN, 1976.
 By: John M. Gerren, Jr., John M. Gerren, Jr., Director, Florida, P. E. Reg. No. 6895.
 By: James V. Denkenberger, Jr., James V. Denkenberger, Jr., County Land Surveyor, Florida, P. L. S. Reg. No. 2421.

BROWARD COUNTY DEPARTMENT OF FINANCE - DIVISION OF COMPTROLLER
 STATE OF FLORIDA SS I HEREBY CERTIFY: That this Plat complies with the provisions of an "ACT TO REGULATE COUNTY OF BROWARD THE MAKING AND FILING FOR RECORD OF MAPS AND PLATS IN THE STATE OF FLORIDA", approved by the Governor, June 27th 1971. This Plat accepted and approved for Record by the BOARD OF COUNTY COMMISSIONERS of Broward County, Florida, this 27th day of JAN, 1976.
 L. A. HESTER COUNTY ADMINISTRATOR BY: Stuart M. Lee DEPUTY
 This Instrument filed for Record, this 29 day of January, 1976, in BOOK 87, of PLATS, at PAGE 50, "RECORD VERIFIED".
 L. A. HESTER COUNTY ADMINISTRATOR BY: Cudney Brown DEPUTY

SURVEYOR'S CERTIFICATE
 STATE OF FLORIDA SS I HEREBY CERTIFY: That the attached Plat is a true and correct representation of the COUNTY OF BROWARD lands recently surveyed, subdivided and platted under my responsible direction and supervision, that the Survey Data shown, complies with the applicable requirements of Chapter 177, FLORIDA STATUTES, A.D. 1971, and further that the Permanent Reference Monuments were set in accordance with Section 177.091, of said Chapter 177, on this 1 day of Oct, 1975.
 This Instrument dated at FORT LAUDERDALE, FLORIDA, this 1 day of Oct, 1975. McLAUGHLIN ENGINEERING CO.
 By: James M. McLaughlin, James M. McLaughlin, Registered Land Surveyor, No. 2021, State of Florida.