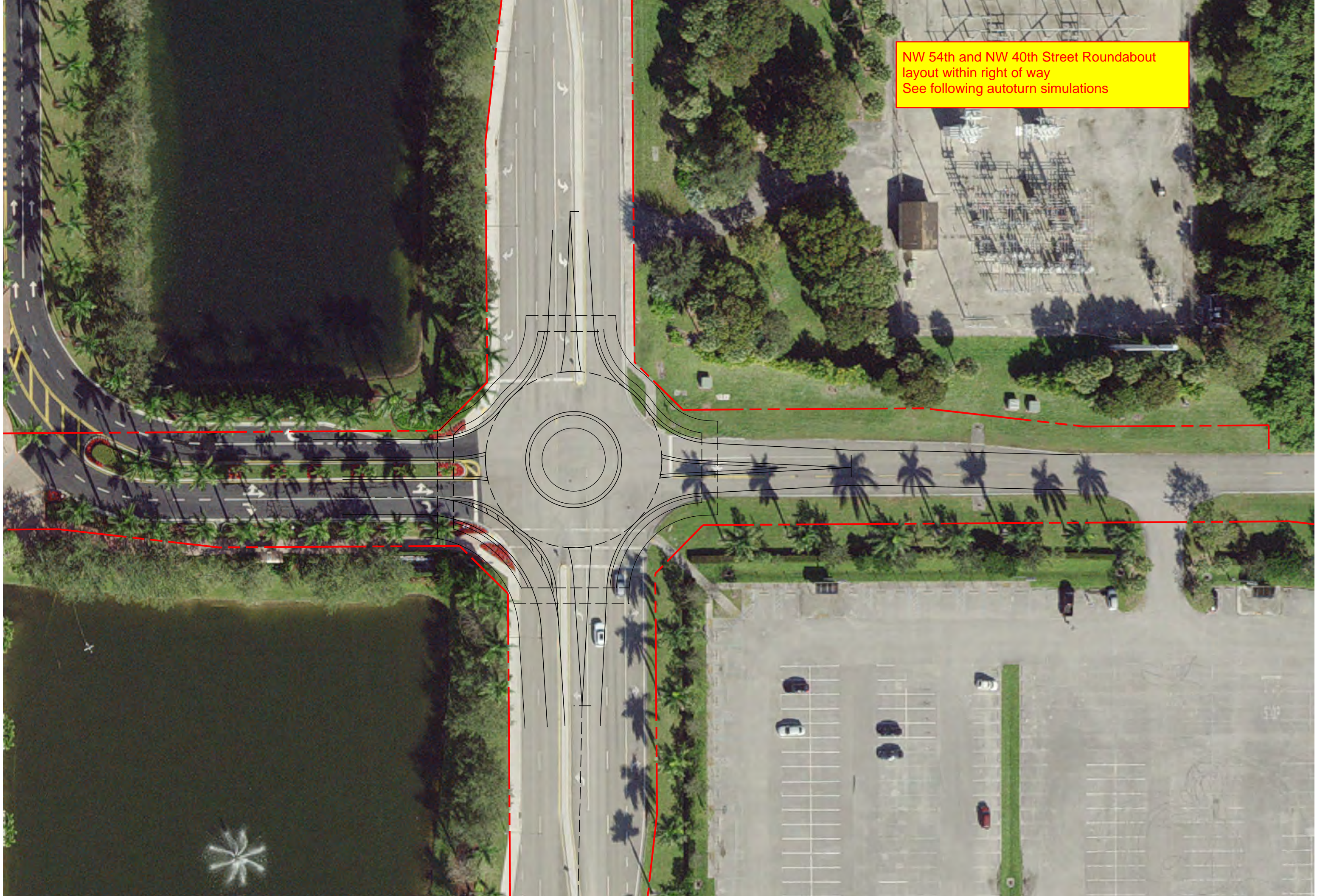
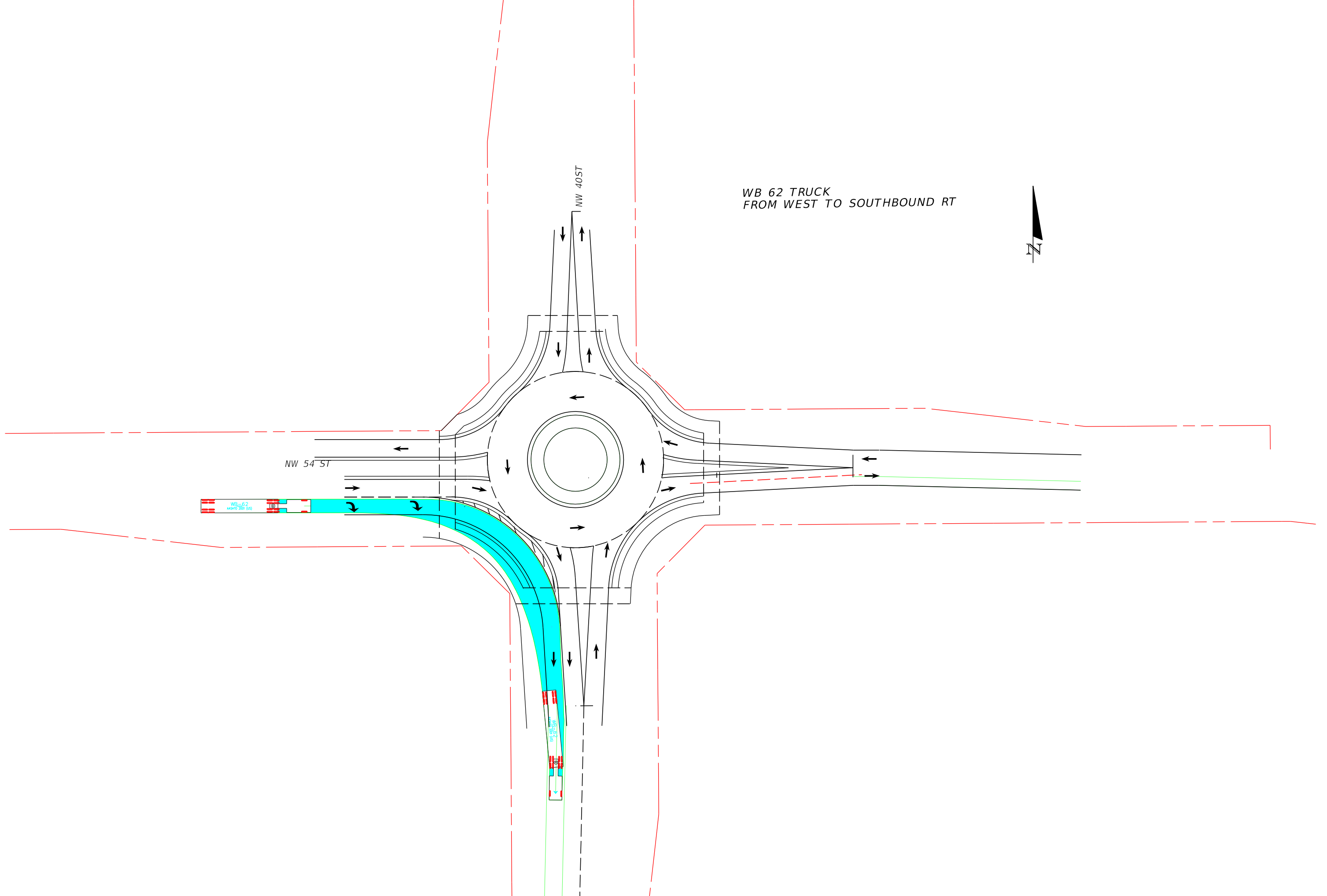


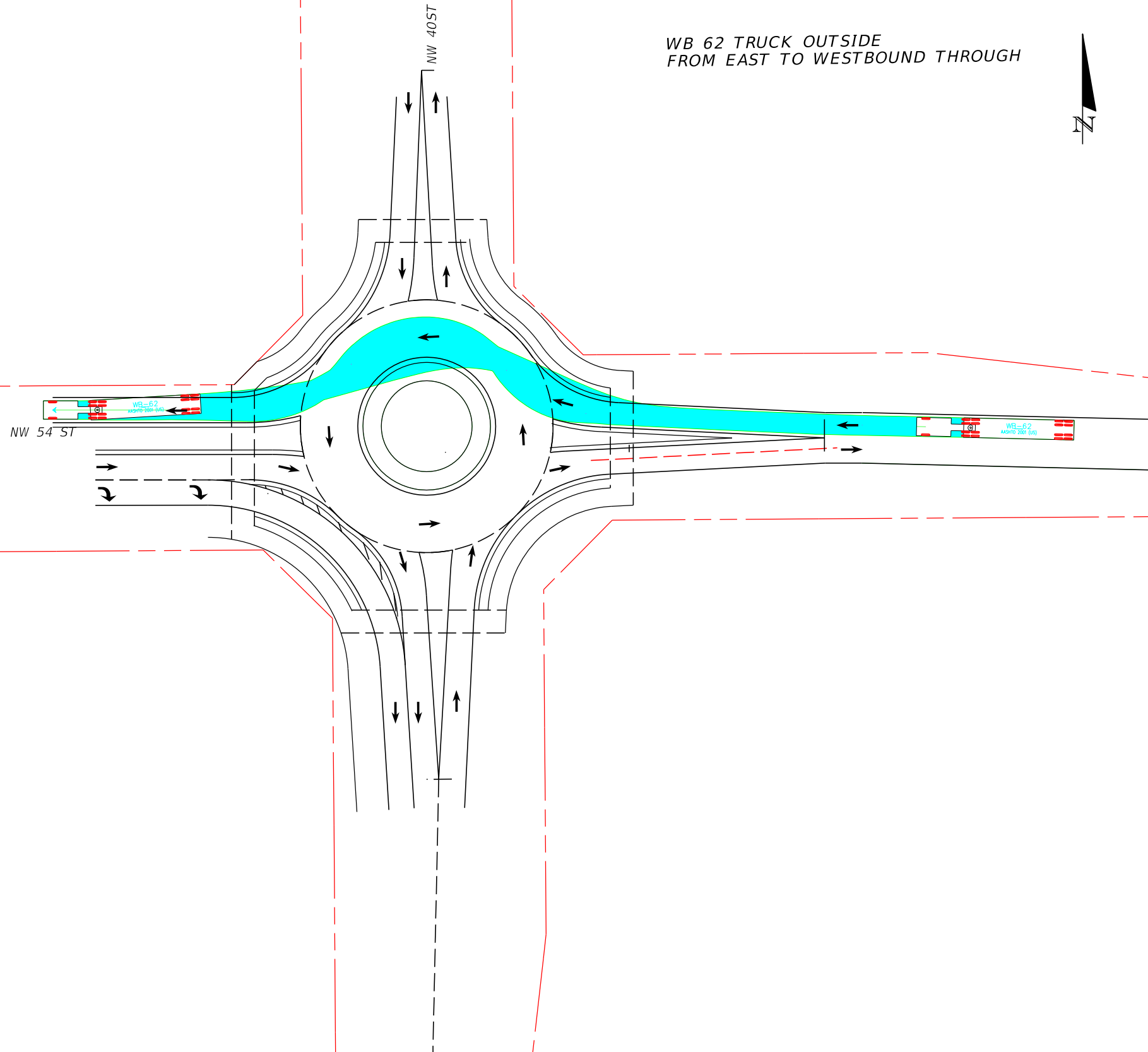
NW 54th and NW 40th Street Roundabout  
layout within right of way  
See following autoturn simulations



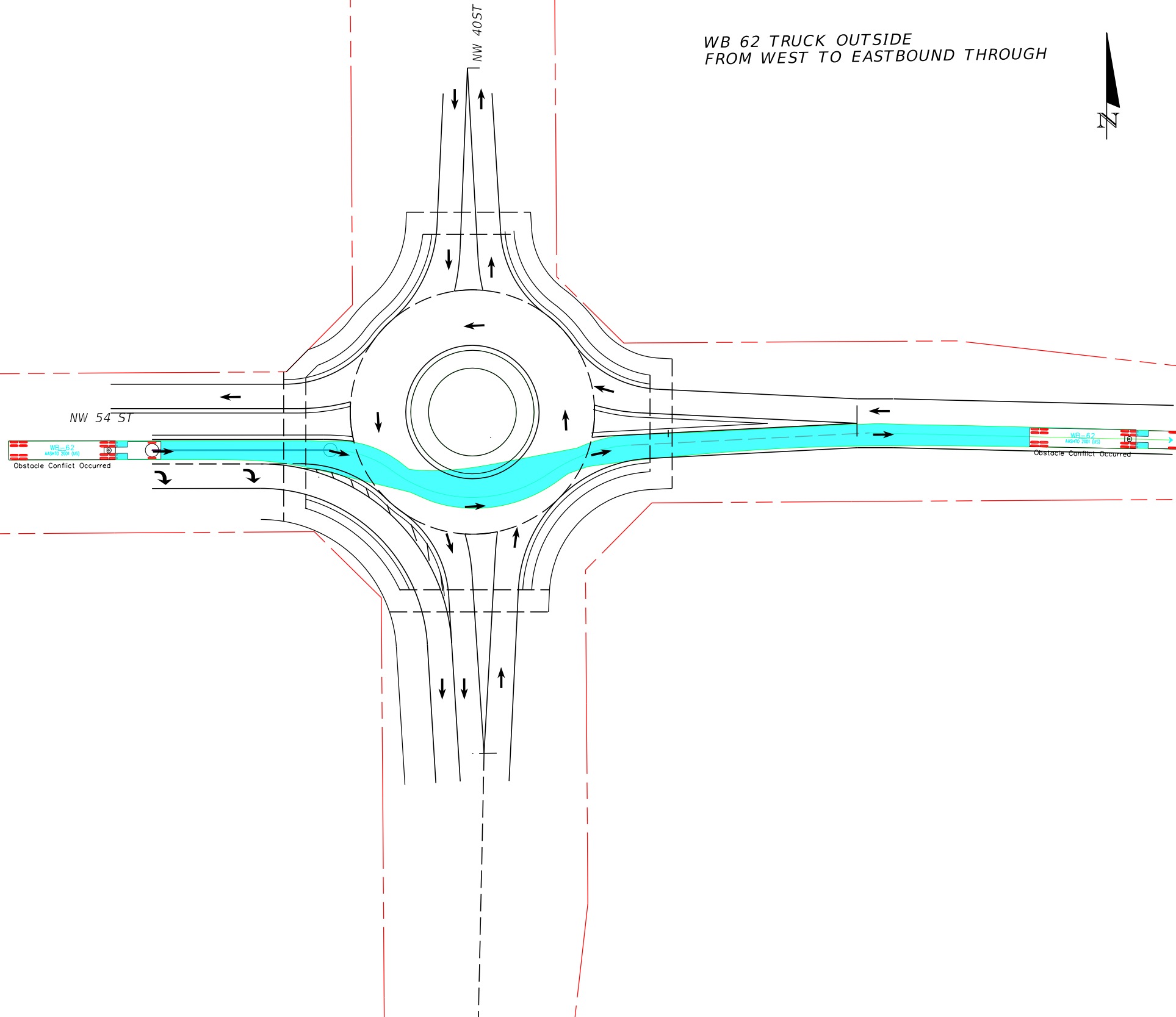
WB 62 TRUCK  
FROM WEST TO SOUTHBOUND RT



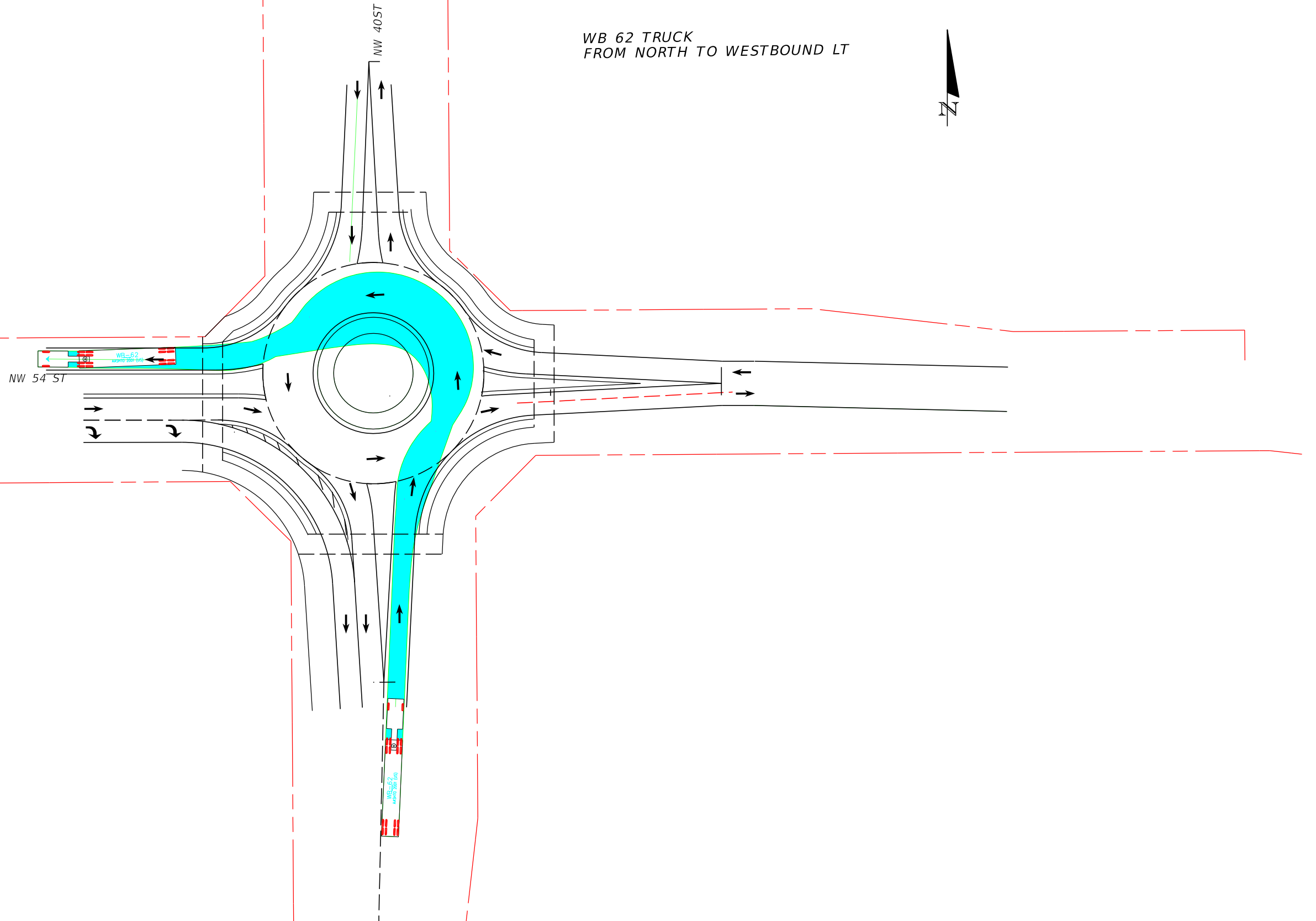
WB 62 TRUCK OUTSIDE  
FROM EAST TO WESTBOUND THROUGH



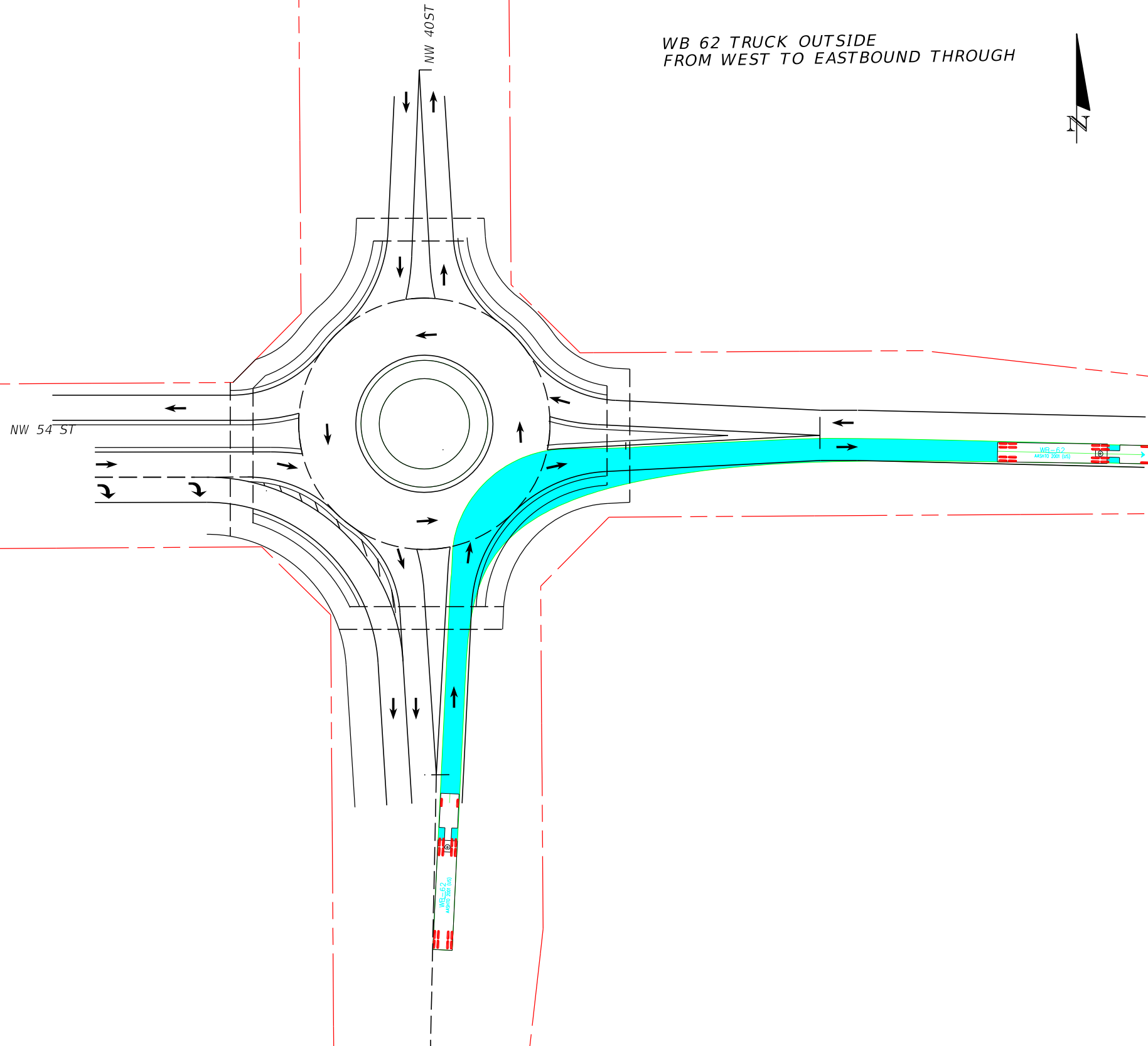
WB 62 TRUCK OUTSIDE  
FROM WEST TO EASTBOUND THROUGH



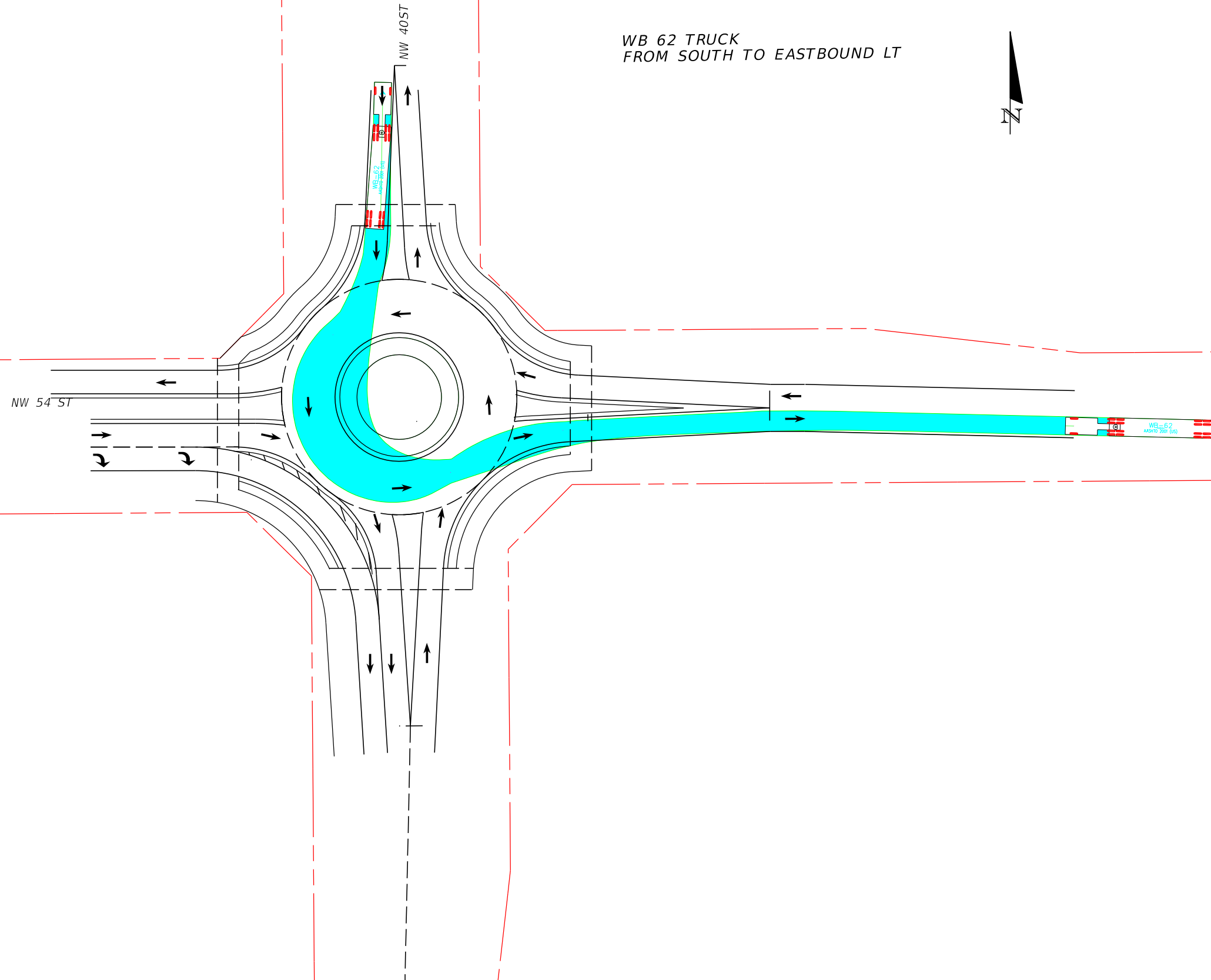
WB 62 TRUCK  
FROM NORTH TO WESTBOUND LT

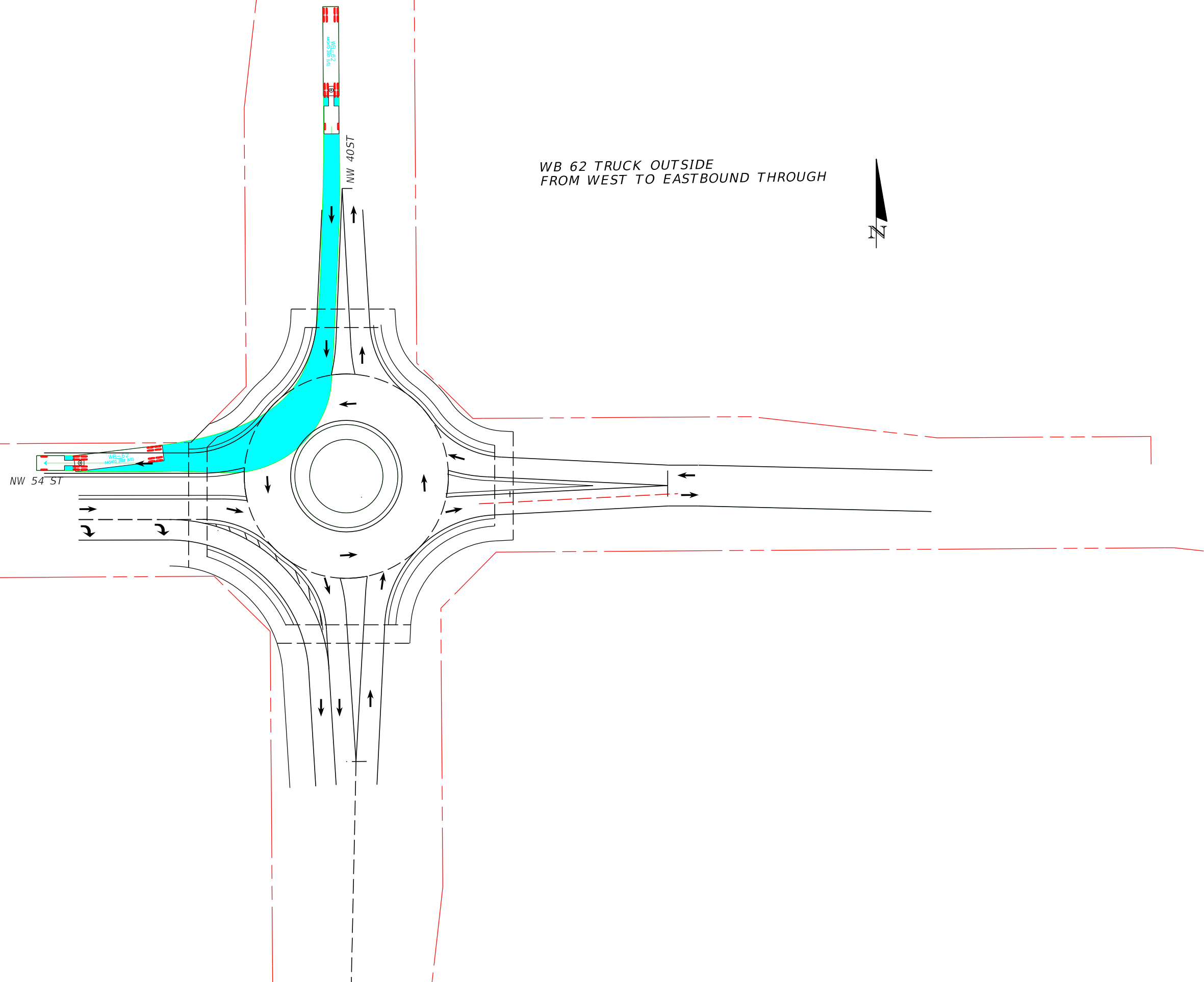


WB 62 TRUCK OUTSIDE  
FROM WEST TO EASTBOUND THROUGH



WB 62 TRUCK  
FROM SOUTH TO EASTBOUND LT





WB 62 TRUCK OUTSIDE  
FROM WEST TO EASTBOUND THROUGH



NW 54 ST

NW 405T

WB 62  
40002, 201, 501



WB 62 TRUCK OUTSIDE  
FROM EAST TO NORTHBOUND RT

