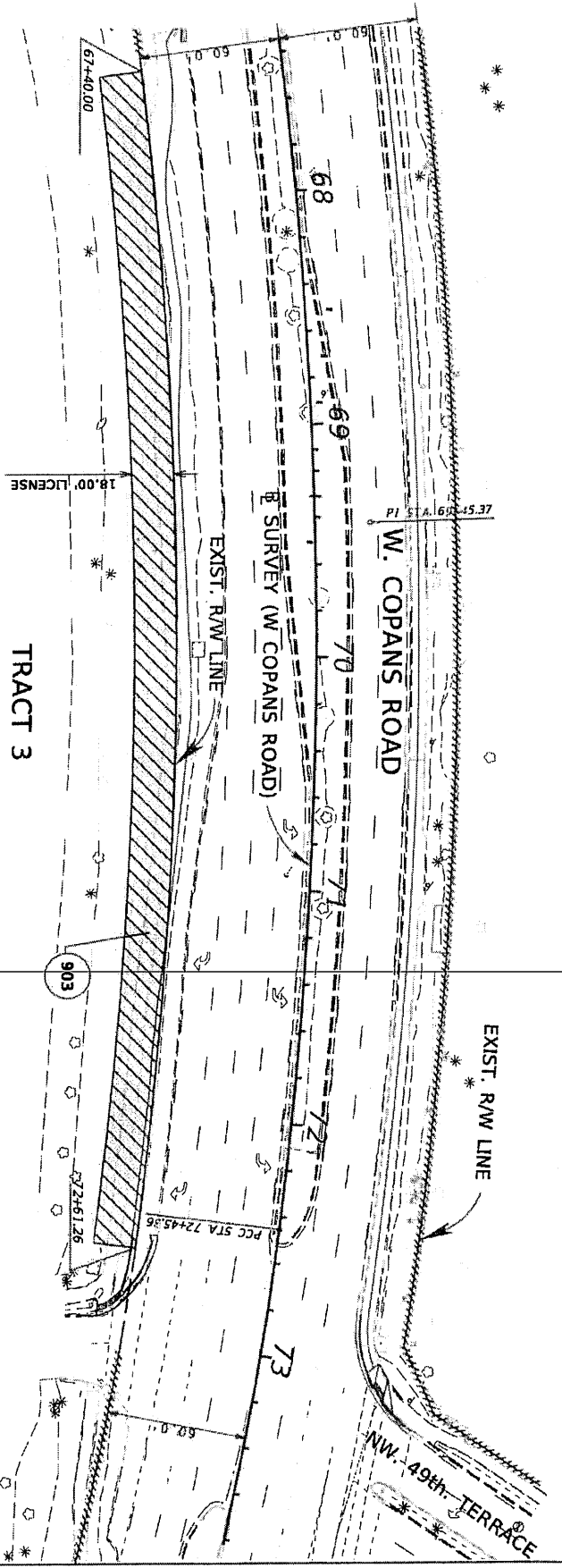


CITY OF COCONUTCREEK, BROWARD COUNTY, FLORIDA.

CURVE DATA 2
 PI STA. = 69+45.37
 Δ = 17° 40' 50" (RT)
 D = 2° 55' 24"
 T = 304.84
 L = 604.83
 R = 1,960.00
 PC STA. = 66+40.54
 PT STA. = 72+45.36



903 OWNER: CITY OF COCONUT CREEK, A MUNICIPAL CORPORATION.
 PALM BEACH FARMS CO., PLAT NO. 3
 PLAT BOOK 2, PAGE 54

SEE PL. TYPED 413, NO. 018
 0 20 40
 Scale: 1" = 40 Feet

DATE	DESCRIPTION	REVISIONS	DATE	DESCRIPTION	STATE OF FLORIDA DEPARTMENT OF TRANSPORTATION	FINANCIAL PROJECT ID	SHEET NO.
					ROAD NO.		1
					COUNTY		
					BROWARD	4987/6-55-01	
LICENSE							