



4670 N STATE ROAD 7
COCONUT CREEK
"VILLAGE SHOPPES"



VILLAGE SHOPPES

CHICK-FIL-A

THESE AREAS

CHEVRON

STATE RD 7 (US 441)

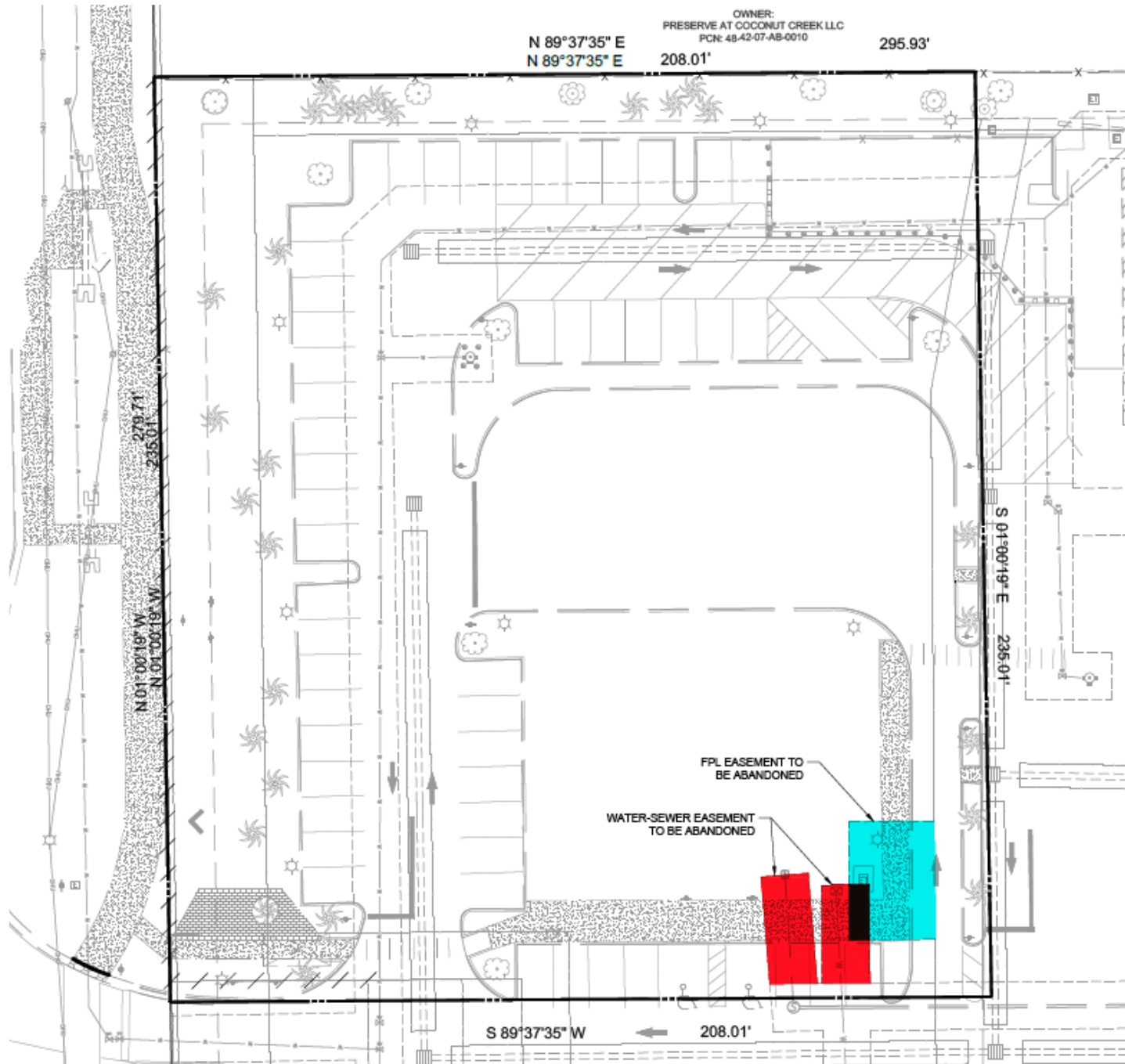
WILES RD

OWNER:
PRESERVE AT COCONUT CREEK LLC
PCN: 48-42-07-AB-0010

N 89°37'35" E
N 89°37'35" E

208.01'

295.93'



S 89°37'35" W 208.01'

S 01°00'19" E 235.01'

N 01°00'10" N 279.71'
W 01°00'10" W 235.01'

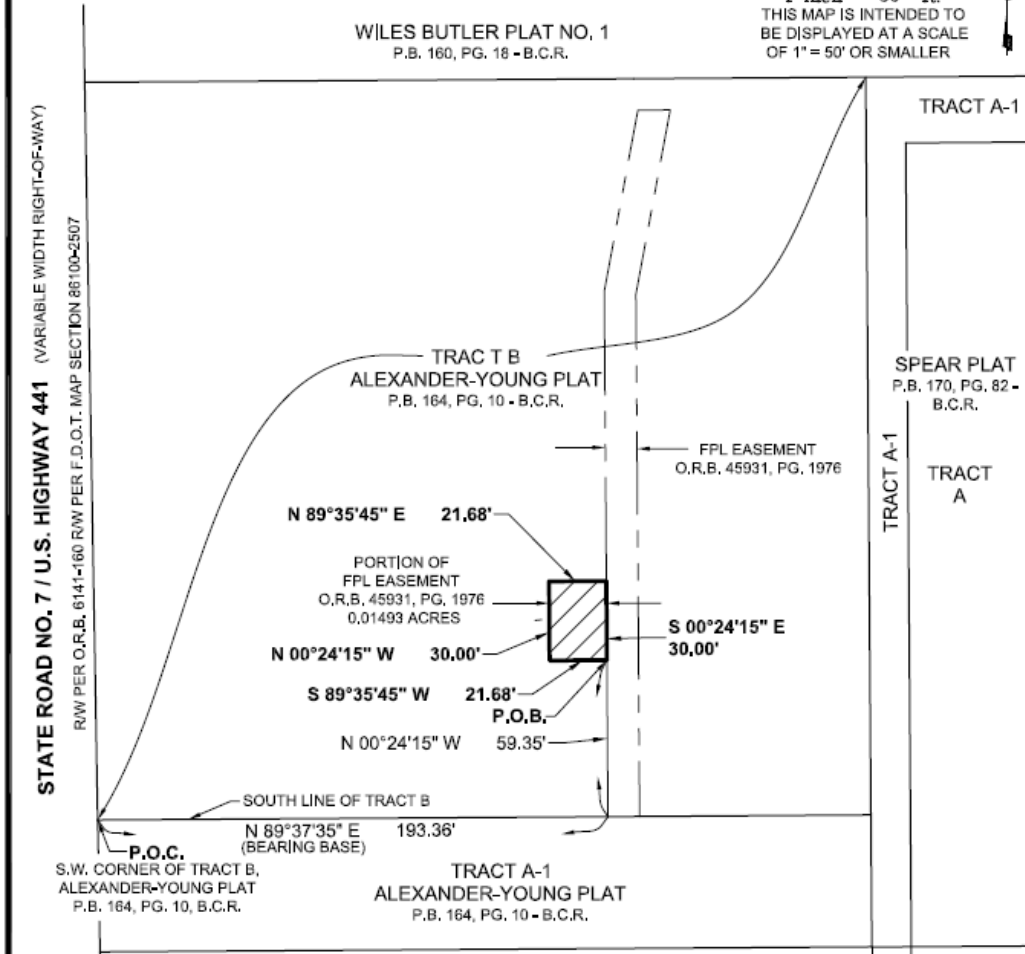
FPL EASEMENT TO BE ABANDONED
WATER-SEWER EASEMENT TO BE ABANDONED

SKETCH OF DESCRIPTION

LYING IN ALEXANDER-YOUNG PLAT, RECORDED IN PLAT BOOK 164, PAGE 10
BROWARD COUNTY, FLORIDA



(IN FEET)
1 inch = 50 ft.
THIS MAP IS INTENDED TO
BE DISPLAYED AT A SCALE
OF 1" = 50' OR SMALLER



NOTE: SEE SHEET 1 OF 2 FOR DESCRIPTION, SURVEYOR'S NOTES AND CERTIFICATION.

THIS IS NOT A SURVEY

Bowman
CONSULTING

Bowman Consulting Group, Ltd., Inc. Phone: (772) 283-1413
301 SE Ocean Blvd. Fax: (772) 220-7881
Suite 301, Stuart, Florida 34994 www.bowmanconsulting.com

Professional Surveyors and Mapper Business Certificate # LB 8030

**PORTION OF FPL EASEMENT
IN O.R.B. 45931, PG. 1976**

BROWARD COUNTY

FLORIDA

PATH: P:\New Projects\010014-01-034\Survey\Topo

PROJECT NO. 010004-01-034

REVISED DATE:

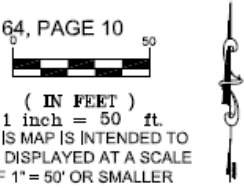
DATE NOV. 17, 2019

CADD FILE: 014-034 FPL ESMT

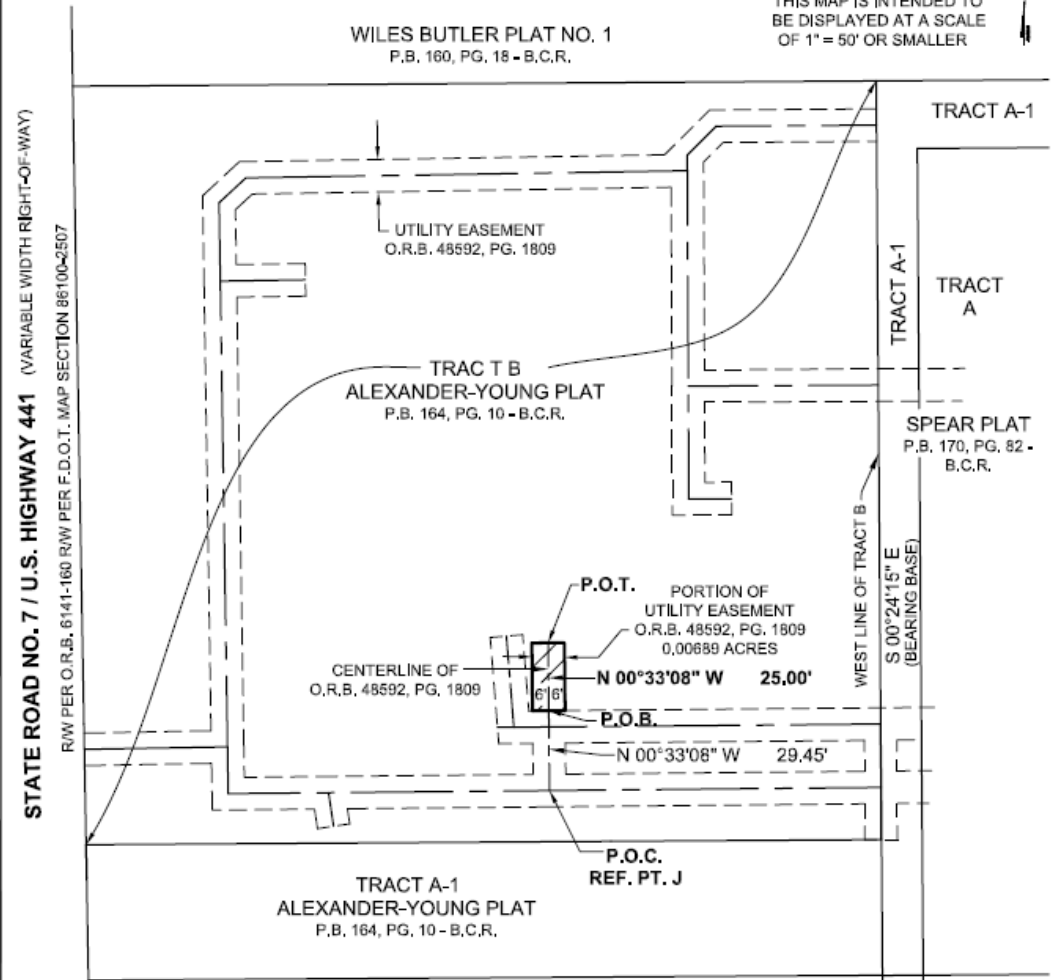
SCALE: 1"=50'

SHEET 2 OF 2

SKETCH OF DESCRIPTION
 LYING IN ALEXANDER-YOUNG PLAT, RECORDED IN PLAT BOOK 164, PAGE 10
 BROWARD COUNTY, FLORIDA



(IN FEET)
 1 inch = 50 ft.
 THIS MAP IS INTENDED TO
 BE DISPLAYED AT A SCALE
 OF 1" = 50' OR SMALLER



NOTE: SEE SHEET 1 OF 2 FOR DESCRIPTION, SURVEYOR'S NOTES AND CERTIFICATION.

THIS IS NOT A SURVEY



Bowman Consulting Group, Ltd., Inc. Phone: (772) 283-1413
 301 SE Ocean Blvd. Fax: (772) 220-7681
 Suite 301, Stuart, Florida 34994 www.bowmanconsulting.com

Professional Surveyors and Mapper Business Certificate # LB 8030

**PORTION OF UTILITY EASEMENT IN
 O.R.B. 48592, PG. 1809**

BROWARD COUNTY FLORIDA

PATH: P:\New Projects\010014-01-034\Survey\Tops
 PROJECT NO. 010004-01-034 REWSED DATE: DATE: NOV. 17, 2019
 CADD FILE: 014-034 UTIL ESMT (J) SCALE: 1"=50' SHEET 2 OF 2

SKETCH OF DESCRIPTION

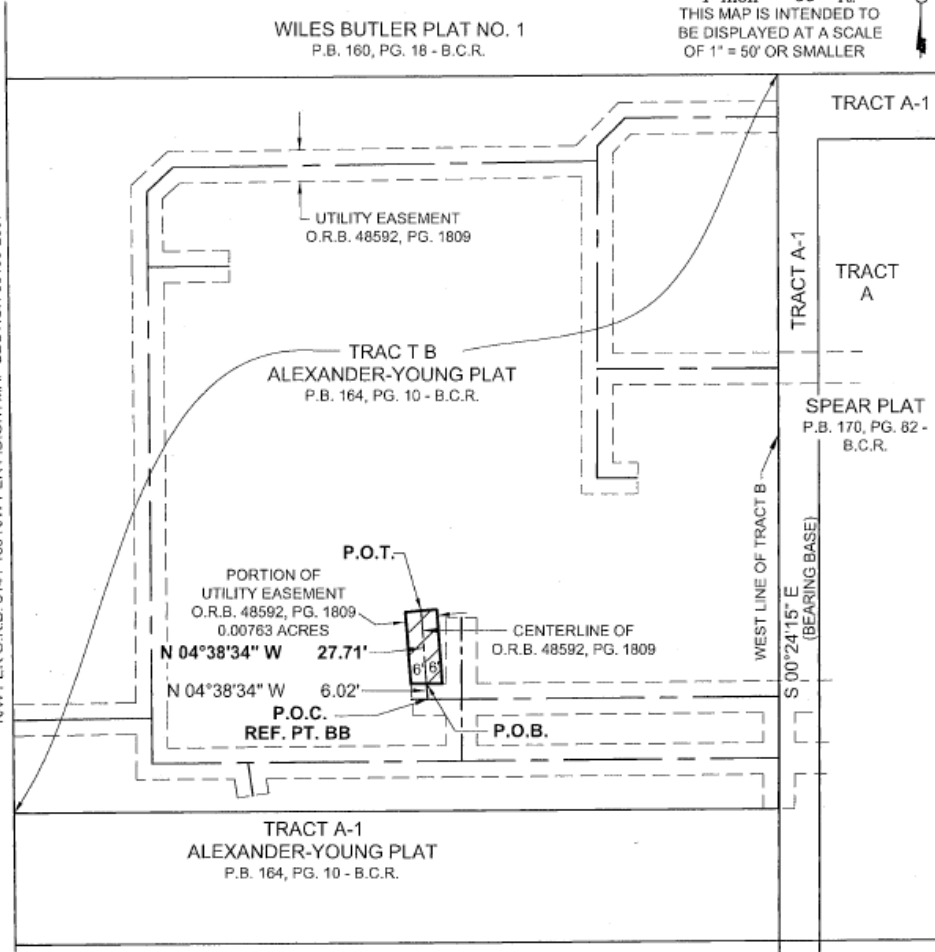
LYING IN ALEXANDER-YOUNG PLAT, RECORDED IN PLAT BOOK 164, PAGE 10
BROWARD COUNTY, FLORIDA



(IN FEET)
1 inch = 50 ft.
THIS MAP IS INTENDED TO
BE DISPLAYED AT A SCALE
OF 1" = 50' OR SMALLER



STATE ROAD NO. 7 / U.S. HIGHWAY 441 (VARIABLE WIDTH RIGHT-OF-WAY)
R/W PER O.R.B. 6141-160 R/W PER F.D.O.T. MAP SECTION 86100-2507



NOTE: SEE SHEET 1 OF 2 FOR DESCRIPTION, SURVEYOR'S NOTES AND CERTIFICATION. THIS IS NOT A SURVEY

Bowman CONSULTING

Bowman Consulting Group, Ltd., Inc. Phone: (772) 283-1413
301 SE Ocean Blvd. Fax: (772) 220-7881
Suite 301, Stuart, Florida 34994 www.bowmanconsulting.com

© Bowman Consulting Group, Ltd.
Professional Surveyors and Mapper Business Certificate # LB 8030

**PORTION OF UTILITY EASEMENT IN
O.R.B. 48592, PG. 1809**

BROWARD COUNTY FLORIDA

PATH: P:\New Projects\010014-01-034\Survey\Topo
PROJECT NO. 010004-01-034 REVISED DATE: DATE: NOV. 17, 2019
CADD FILE: 014-034 UTIL ESMT (BB) SCALE: 1"=50' SHEET 2 OF 2