

**SECTION NO: 86028**  
**S.R. NO(S): 834 (Sample Rd.)**  
**COUNTY: Broward**  
**FM NO.(S): 421656-1-52-01**

**DISTRICT FOUR (4) AMENDMENT # TWO (2)**  
**TO STATE OF FLORIDA DEPARTMENT OF TRANSPORTATION AND**  
**CITY OF COCONUT CREEK LANDSCAPE**  
**INCLUSIVE LANDSCAPE MEMORANDUM OF AGREEMENT**

This is Amendment Number Two to the Agreement dated May 27, 2009, made and entered into this 10<sup>th</sup> day of March 2010 by and between the State of Florida Department of Transportation hereinafter called the "DEPARTMENT" and the City of Coconut Creek, a political subdivision of the State of Florida, hereinafter called the "AGENCY".

WHEREAS, the parties entered into the Inclusive Maintenance of Agreement dated May 27, 2009 for the purpose of maintaining the landscape improvements by the AGENCY on various State Roads including State Road 834 (Sample Road) and

WHEREAS, the DEPARTMENT and the AGENCY have agreed to add additional landscape improvements to be installed on State Road 834 (Sample Road) in accordance with the above referenced Agreement;

NOW THEREFORE, for and in consideration of mutual benefits that flow each to the other, the parties covenant and agree as follows:

1. Pursuant to paragraph 6 of the Inclusive Agreement for State Road 834 dated May 27, 2009 the DEPARTMENT has decided to construct additional landscape improvements or to modify an improvement located as indicated in Exhibit A. State Road 834 (Sample Road) from west of N.W. 54<sup>th</sup> Avenue (M.P. 3.221) to east of Tradewinds Park Road (M.P. 4.763) in accordance with the plans attached as Exhibit B.
2. The AGENCY shall agree to maintain the landscape improvements in the Inclusive Agreement described above and as provided in accordance with the Maintenance Plan, attached as Exhibit C.
3. The DEPARTMENT agrees to enter into a contract to have installed said landscape improvements for an amount as indicated in Exhibit D not to exceed **\$72,283.71**.

Except as modified by this amendment, all terms and conditions of the Agreement shall remain in full force and effect.

**Exhibits**

Exhibit A - PROJECT LOCATION & MAINTENANCE BOUNDARIES & MAP

Exhibit B - PROJECT PLANS

Exhibit C - MAINTENANCE PLAN

Exhibit D - PROJECT COSTS

In Witness whereof, the parties hereto have executed with this Amendment effective the 10<sup>th</sup> day 2010 year written and approved.

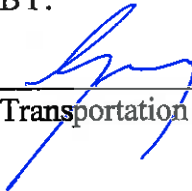
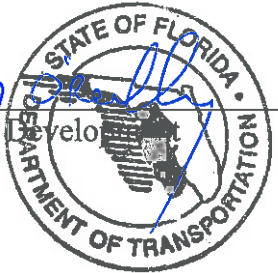
City of Coconut Creek  
a municipal corporation.

State of Florida  
Department of Transportation

BY:

  
\_\_\_\_\_  
David J. Rivera  
City Manager

BY:

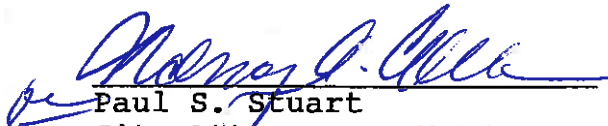
  
\_\_\_\_\_  
Transportation Development  


ATTEST:

  
\_\_\_\_\_  
Barbara S. Price,  
City Clerk

 March 10, 2010  
\_\_\_\_\_  
Office of the General Counsel Date

APPROVED AS TO FORM:

  
\_\_\_\_\_  
Paul S. Stuart  
City Attorney

**NANCY A. COUSINS**

**SECTION NO: 86028**  
**S.R. NO(S): 834 (Sample Rd.)**  
**COUNTY: Broward**  
**FM NO.(S): 421656-1-52-01**

## EXHIBIT A

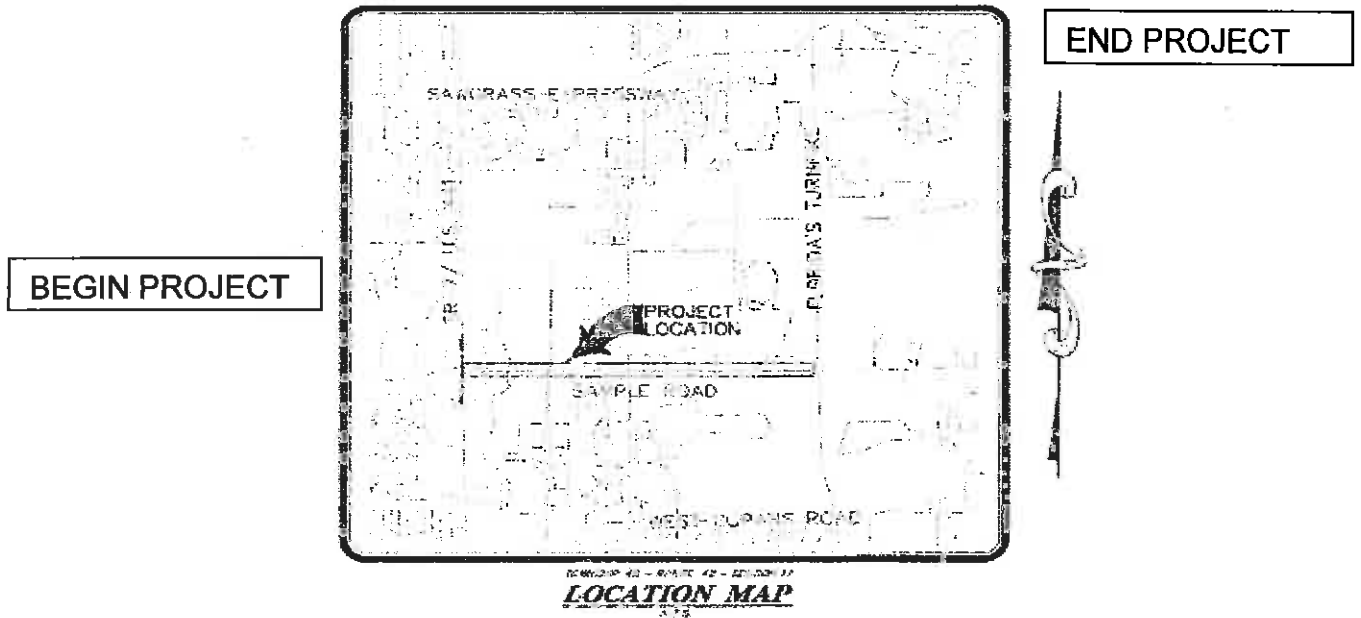
### I. PROJECT LOCATION:

State Road 834 (Sample Road) from west of N.W. 54<sup>th</sup> Avenue (M.P. 3.221) to east of Tradewinds Park Road (M.P. 4.763) (City of Coconut Creek, in Broward County)

### II. PROJECT MAINTENANCE LIMITS FOR THIS PROJECT:

State Road 834 (Sample Road) from west of N.W. 54<sup>th</sup> Avenue (M.P. 3.221) to east of Tradewinds Park Road (M.P. 4.763) (City of Coconut Creek, in Broward County).  
The Agency shall still be responsible for the maintenance of SR 834 (Sample road) from M.P. 3.008 to M.P. 5.030 and all other roads listed in the original agreement.

### III. PROJECT MAINTENANCE BOUNDARY MAP:



**SECTION NO: 86028**

**S.R. NO(S): 834 (Sample Rd.)**

**COUNTY: Broward**

**FM NO.(S): 421656-1-52-01**

## **EXHIBIT B**

### **PROJECT PLANS**

**The Department agrees to install the Project in accordance with the plans and specifications attached hereto and incorporated herein.**

**Please see attached plans prepared by: Ken Gardner R.L.A.  
Rosenberg Gardner Design  
Dated: 2/11/2010**

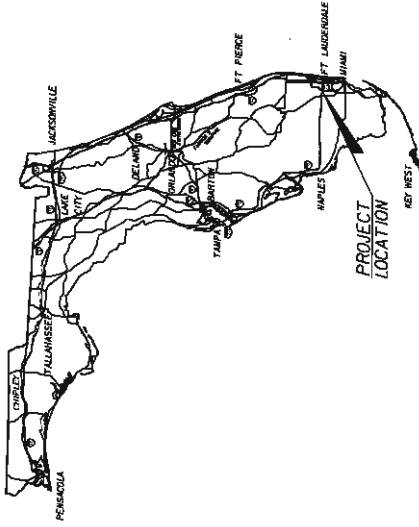
**STATE OF FLORIDA**  
**DEPARTMENT OF TRANSPORTATION**

**CONTRACT PLANS**

FINANCIAL PROJECT ID 421656-1-52-01  
 BROWARD COUNTY (86028)  
 STATE ROAD NO. 834 (SAMPLE ROAD)  
 FROM WEST OF NW 54 AVE TO EAST OF TRADEWINDS PARK ROAD  
**LANDSCAPE PLANS**

**INDEX OF LANDSCAPE PLANS**

SHEET NO.	SHEET DESCRIPTION
LD-1	KEY SHEET
LD-2	KEY MAP
LD-3	TABULATION OF QUANTITIES/PLANT SCHEDULE
LD-4	TABULATION OF QUANTITIES IRRIGATION & SITE AMENITIES
LD-5	GENERAL AND P&I ITEM NOTES
LD-6	EXISTING TREE DISPOSITION LIST
LD-7 - LD-10	EXISTING LANDSCAPE DISPOSITION PLAN
LD-11 - LD-14	PLANTING PLAN
LD-15	IRRIGATION PLAN
LD-16	FLEXIBLE SWING JOINT DETAIL



PROJECT LOCATION

LANDSCAPE "TOP DRAWINGS TO BE SUBMITTED TO:  
 ROSENBERG GARDNER DESIGN  
 ATTN: KEN GARDNER  
 5180 N.W. 167 STREET, SUITE III  
 MIAMI, FLORIDA 33104

PLANS PREPARED BY:



**ROSENBERG  
 GARDNER  
 DESIGN**

LANDSCAPE ARCHITECTURE  
 LAND PLANNING  
 5180 NW 167th St, Suite 111  
 Miami, Florida 33114  
 PHONE: 305-687-7781  
 FAX: 305-687-7781  
 CORPORATE: 1-800-828-0288  
 WWW.ROSENBERGGARDNER.COM

CONTRACT NO. C-9085  
 VENDOR NO. 03550957-001  
 C.A. NO. L00000586

NOTE: THE SCALE OF THESE PLANS MAY  
 HAVE CHANGED DUE TO REPRODUCTION.

*[Handwritten Signature]*  
 KEN GARDNER  
 LANDSCAPE ARCHITECT OF RECORD

KEY SHEET REVISIONS	DATE	DESCRIPTION

LANDSCAPE PLANS  
 LANDSCAPE ARCHITECT OF RECORD  
 R.L.A. NO. 2

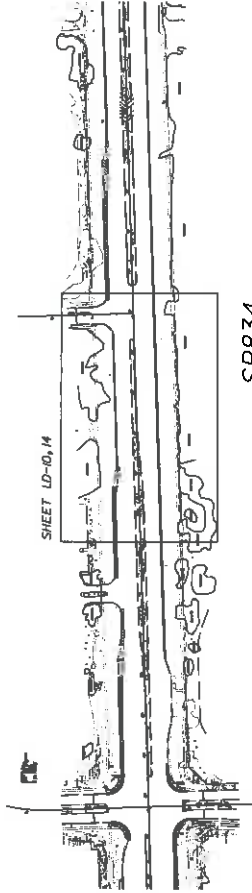
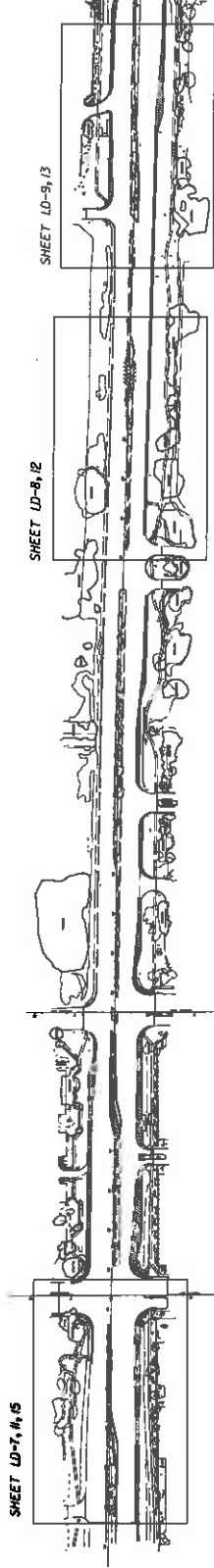
TOTAL SHEET	SHEET NO.
11	10

PROJECT MANAGER: THUC LE, P.E.

NOTICE: THE OFFICIAL RECORD OF THIS SHEET IS THE ELECTRONIC FILE JOINED AND SEALED UNDER RULE 61.00-10.01, F.A.C.



SR834



SR834

*Handwritten signature in blue ink.*

DATE	DESCRIPTION	REVISIONS	DATE	DESCRIPTION

<b>ROSENBERG GARDNER DESIGN</b> <small>LANDSCAPE ARCHITECTURE          LAND SURVEYING          CIVIL ENGINEERING          ENVIRONMENTAL ENGINEERING          1000 SANDHURST, L.A. 33006</small>		STATE OF FLORIDA DEPARTMENT OF TRANSPORTATION ROAD NO. 834 COUNTY BROWARD FINANCIAL PROJECT ID 421656-1-52-01	<b>KEY MAP</b>	SHEET NO. LD-2
--	--	---	----------------	-------------------


# TABULATION OF QUANTITIES / PLANT SCHEDULE

PAY ITEM NO.	PAY SIZE	BOTANICAL NAME	COMMON NAME	INSTALLED SIZE	MAXIMUM MAINTAINED SIZE	SPACING	REMARKS	UNIT	SHEET NUMBERS								TOTAL THIS SHEET		GRAND TOTAL	
									LD-11	LD-12	LD-13	LD-14	PLAN	FINAL	PLAN	FINAL	PLAN	FINAL	PLAN	FINAL
82-1-2		PREPARED SOIL LAYER						SF	488	205	300	237			1150		1150			
570-1-2	SMALL	ST. AUGUSTINE "F. LORRAINE"		SOLID SOD, PATCH AS REQUIRED	3"			SF	55						55		55			
570-1-1	LARGE	PHOENIX DACTYLOFERA 'WEDDOL'	WEDDOL DATE PALM	25' TALL	N/A	N/A		EA	1						1		1			
580-1-1	SMALL	JUNIPERUS DANURICA 'PARSONII'	PARSON'S JUNIPER	1 GAL. CANS, FULL	12"	12"		EA	2530	2057	2350	1670			8607		8607			
590-70		IRRIGATION SYSTEM COMPLETE						LS							1		1			

NOTICE: THE OFFICIAL RECORD OF THIS SHEET IS THE ELECTRONIC FILE SIGNED AND SEALED UNDER RULE 68B0-11.001, F.A.C.

*[Handwritten Signature]*

# TABULATION OF QUANTITIES / PLANT SCHEDULE


DATE	DESCRIPTION	REVISIONS	DATE	DESCRIPTION
				
STATES OF FLORIDA DEPARTMENT OF TRANSPORTATION ROAD NO. 834 COUNTY BROWARD FINANCIAL PROJECT ID 42356-1-52-01				
TABULATION OF QUANTITIES PLANT SCHEDULE				
				SHEET NO. LD-3

**TABULATION OF QUANTITIES  
/ SCHEDULE FOR IRRIGATION & SITE AMENITIES**

SYMBOL	QUANTITY	UNIT	DESCRIPTION / REMARKS
	AS REQUIRED		PVC LATERALS & MAINS SHALL BE SCHEDULE 40 PVC (SIZED AS SHOWN ON PLANS) FLEXIBLE PVC OR POLYPIPE (FOR SWING JOINTS)
	12	EA	RAINFIELD SPRAY HEADS 1800 @ 30 PSI SERIES W/MPR NOZZLES (OR APPROVAL EQUAL) 1/2" POP-UP IN SHRUB AREAS
	2	EA	15-H (1.85 GPM)
	1	EA	15-SST (1.21 GPM)
		EA	15-EST (0.61 GPM)

*Handwritten signature*

**TABULATION OF QUANTITIES  
/ SCHEDULE FOR IRRIGATION & SITE AMENITIES**

DATE	DESCRIPTION	REVISIONS	DATE	DESCRIPTION
		STATES OF FLORIDA DEPARTMENT OF TRANSPORTATION ROAD NO. COUNTY FINANCIAL PROJECT ID 834 BROWARD 421656-1-52-01		SHEET NO. LD-4
		TABULATION OF QUANTITIES IRRIGATION & SITE AMENITIES		



**GENERAL IRRIGATION NOTES:**

1. SCOPE OF WORK: THE CONTRACTOR SHALL FURNISH ALL LAGERS, MACHINERY, TOOLS, SUPPLIES, AND EQUIPMENT AS NECESSARY TO CONSTRUCT AND PROVIDE AN OPERATING SYSTEM, AS INDICATED IN THE PLANS. THE WORK SHALL INCLUDE, BUT NOT BE LIMITED TO, FURNISHING MATERIALS (PIPE, SPRINKLER HEADS, FITTINGS, PRIMER, GUE, ETC.), LAYOUT, PROTECTION TO THE PUBLIC, EXCAVATION, ASSEMBLY, INSTALLATION, BACKFILLING, COMPLETION, REPAIR OF ROAD OR PAVEMENT SURFACES, CLEAN-UP, MAINTENANCE AND GUARANTEE, AND AS-BUILT PLANS.
2. GUARANTEE: THE IRRIGATION SYSTEM SHALL BE GUARANTEED FOR A MINIMUM OF ONE CALENDAR YEAR FROM THE TIME OF FINAL ACCEPTANCE.
3. REPAIR UTILITIES: THE CONTRACTOR SHALL BE RESPONSIBLE TO VERIFY THE LOCATION OF ALL UTILITIES BY HAND EXCAVATION OR OTHER APPROPRIATE MEASURES BEFORE PERFORMING ANY WORK THAT MAY RESULT IN DAMAGE TO UTILITIES STRUCTURES, OR PROPERTY. THE CONTRACTOR SHALL TAKE IMMEDIATE STEPS TO REPAIR, REPLACE, OR RESTORE ALL SERVICES TO ANY UTILITIES WHICH ARE DISRUPTED DUE TO HIS OPERATIONS. ALL COSTS INVOLVED IN DISRUPTION OF SERVICE AND REPAIRS DUE TO NEGLIGENCE ON PART OF THE CONTRACTOR SHALL BE HIS RESPONSIBILITY.
4. AS-BUILT DRAWINGS: PRINTS OF THE PLANS WILL BE SUPPLIED TO THE CONTRACTOR FOR RECORDING "AS-BUILT" INFORMATION. IMMEDIATELY UPON INSTALLATION OF ANY WORK WHICH DEVIATES FROM WHAT IS SHOWN ON THE PLANS, THE CONTRACTOR SHALL CLEARLY INDICATE SUCH CHANGES IN RED PENCIL ON THE PRINTS. SUCH CHANGES SHALL INCLUDE, BUT NOT BE LIMITED TO, CHANGES IN (1) MATERIALS; (2) SIZES OF MATERIALS; (3) LOCATION; AND (4) QUANTITIES.
5. THE ENTIRE INSTALLATION SHALL FULLY COMPLY WITH ALL APPLICABLE LOCAL AND STATE CODES AND ORDINANCES. THE CONTRACTOR SHALL TAKE OUT ALL REQUIRED PLUMBING AND ELECTRICAL APPLICATIONS AND PERMITS, ARRANGE FOR ALL NECESSARY INSPECTIONS, AND SHALL PAY ALL FEES AND EXPENSES IN CONNECTION WITH SAME AS PART OF WORK UNDER THE CONTRACT.
6. UNIT PRICES: THE SUCCESSFUL BIDDER SHALL FURNISH, TO THE OWNER, A UNIT PRICE BREAKDOWN FOR ALL MATERIALS. THE OWNER MAY AT HIS OWN DISCRETION, ADD TO OR DELETE FROM THE MATERIALS, USING THE UNIT PRICE BREAKDOWN SUBMITTED TO AND ACCEPTED BY THE OWNER.
7. MAINTENANCE PERIOD: THE IRRIGATION SYSTEM SHALL BE MAINTAINED FOR A PERIOD OF 90 DAYS AFTER FINAL ACCEPTANCE OF INSTALLATION. MAINTENANCE SHALL INCLUDE CHECKING OF THE SYSTEM 2 TIMES PER WEEK. CONTRACTOR SHALL BE RESPONSIBLE TO REPLACE/REPAIR ANY BROKEN OR MALFUNCTIONING PARTS OF THE SYSTEM INCLUDING THOSE DAMAGED BY ACCIDENTS OR VANDALISM. REPAIRS SHALL BE MADE IMMEDIATELY AT THE TIME OF INSPECTION OR WHEN NOTIFIED BY THE PROJECT ENGINEER.
8. THE IRRIGATION SYSTEM SHALL PROVIDE 100% COVERAGE WITH A MINIMUM OF 90% OVERLAP OF WATER SPRAY.
9. THE SYSTEM IS DESIGN TO PROVIDE SPRINKLER PRECIPITATION RATES THAT ARE NEARLY EQUAL IN EACH ZONE. MIXING OF SPRINKLERS WITH WIDELY VARYING PRECIPITATION RATES IN A ZONE WILL NOT BE ACCEPTED.
10. ALL PIPE SHALL BE MADE OF SCHEDULE 40 PVC, EXCEPT FLEXIBLE PVC (OR TORO FUNNY PIPE) FOR FLEXIBLE SWING JOINTS. PIPE LOCATIONS SHALL BE ADJUSTED IN THE FIELD. WHEN LAYING OUT MAINS AND LATERALS, LOCATE PIPE NEAR EDGES OF PAVEMENT OR AGAINST BUILDINGS WHEREVER POSSIBLE, TO ALLOW SPACE FOR PLANT ROOTBALLS. COORDINATE PIPE LOCATIONS WITH PLANTINGS. BURY ALL LATERALS 12" DEPTH SHALL BE MEASURED TO TOP OF PIPE.
11. KEEP POP-UP SPRINKLER HEADS A MINIMUM OF 12" FROM EDGES OF CURBING.

**IRRIGATION EXPANSION NOTES:**

1. IT IS ANTICIPATED THAT AFTER COMPLETION OF THESE TASKS THERE WILL BE A FULLY FUNCTIONING AUTOMATIC IRRIGATION SYSTEM (EQUIPPED WITH AN AUTOMATIC RAIN SHUT OFF DEVICE) THAT WILL PROVIDE IRRIGATION TO ALL NEW VEGEATABLE AREAS WITH 90% OVERLAP OF SPRAY.
2. THE CONTRACTOR SHALL LOCATE EXISTING CONNECTION TO WATER SOURCE (PUMP AND WELL, LAKE, WETLAND, WATER METER), CONTROL VALVE, VALVES AND MAINLINE. THE CONTRACTOR SHALL THEN VERIFY THAT ALL SYSTEMS ARE IN WORKING ORDER AND PERFORM A FLOW TEST TO DETERMINE THE AMOUNT OF WATER FLOW AND PRESSURE THROUGHOUT THE SYSTEM.
3. IF THERE IS NO EXISTING RAIN SHUT OFF DEVICE THEN THE CONTRACTOR SHALL FURNISH AND INSTALL A NEW ONE. THE CONTRACTOR IS RESPONSIBLE TO ENSURE THAT THE ELECTRICAL WORK IS PERFORMED TO ALL APPLICABLE CODES AND STANDARDS. SUCH WORKS ARE NOT SUFFICIENT TO PROPERLY OPERATE THE SYSTEM, THE CONTRACTOR SHALL MAKE SUGGESTIONS FOR CORRECTIONS.

**GENERAL NOTES:**

1. THE CONTRACTOR SHALL COMPLY WITH ALL STATE AND FEDERAL REQUIREMENTS.
2. ALL TREES AND PALMS SHOWN TO BE REMOVED IN THE EXISTING TREE DISPOSITION PLANS SHALL BE INCLUDED UNDER 10-1-CLEARING AND GRUBBING. (REFER TO ROADWAY PLANS) THE COST FOR THE REMOVAL OF ANY EXISTING INVASIVE VEGETATION WITHIN THE PROJECT LIMITS SHALL BE INCLUDED UNDER 10-1-CLEARING AND GRUBBING.
3. THE CONTRACTOR SHALL BE RESPONSIBLE TO MAINTAIN THE CONTINUAL OPERATION OF ANY SPRINKLER SYSTEM ENCOUNTERED IN THE ROW, BY IMMEDIATELY REPAIRING AND REPLACING PIPES, SPRINKLER HEADS AND IRRIGATION CONTROLS. THE COST OF REPAIRING OR MAINTAINING EXISTING IRRIGATION SYSTEMS SHALL BE INCLUDED IN THE COST FOR IRRIGATION (0500-70) WHEN THE OPERATION OF THE SYSTEM IS INTERRUPTED. THE CONTRACTOR SHALL BE RESPONSIBLE TO PROVIDE ADEQUATE WATER BY OTHER MEANS, SUCH AS HAND WATERING OR WATER TRUCK.
4. PROTECTION OF EXISTING VEGETATION PRIOR TO AND DURING CONSTRUCTION SURROUND ALL LANDSCAPE TO REMAIN AS PER INDEX 544. STAKE MESH A MINIMUM OF 6 FEET ON CENTER. KEEP PROTECTION AS FAR AS POSSIBLE FROM THE PLANTS CONSISTENT WITH NOT AND SPACE FOR CONSTRUCTION. IN CLEAR SIGHT ZONES (PER INDEX 546), KEEP MESH NO HIGHER THAN 18 INCHES ABOVE TOP OF CURB HEIGHT. USE 1 INCH PVC STAKES IN HORIZONTAL CLEAR ZONE.
5. THE COST OF ALL LANDSCAPE AND IRRIGATION MAINTENANCE ACTIVITIES SHALL BE INCLUDED IN THE COST FOR PAY ITEM (0500-70)
6. ALL EXISTING LANDSCAPE SHALL BE FERTILIZED SUFFICIENTLY TO MAINTAIN A HEALTHY, GROWING STATE THROUGHOUT CONSTRUCTION AND THE ONE-YEAR MAINTENANCE AND WARRANTY PERIOD.
7. THE PALMS SHALL BE ROUTINELY EVALUATED DURING CONSTRUCTION AND WARRANTY PERIOD FOR PEST INFESTATION AND TREATED AS DEEMED NECESSARY.
8. IS A CERTIFIED ARBORIST CURRENT WITH A BROWARD COUNTY TREE TRIMMERS LICENSE MUST BE PRESENT ON SITE TO SUPERVISE THE TRAINING OF ANY EXISTING TREES AND PALMS IN THE R.O.W.

**PAY ITEM NOTES:**

1. THE CONTRACTOR SHALL BE RESPONSIBLE UNDER THE PAY ITEM FOR CLEARING & GRUBBING (10-1-1) SEE ROADWAY PLANS FOR THE COST OF REMOVING FROM ANY NEW LANDSCAPE AREAS IN THE MEDIANS, PRIOR TO PLANTING AND IRRIGATION INSTALLATION, ALL ASPHALT OR CONCRETE PAVING, LIMESTONE ROADROCK RUBBLE, AND COMPACTED ROAD BASE DOWN 12" MEASURED FROM ADJACENT TOP OF ASPHALT.
2. THE CONTRACTOR SHALL BE RESPONSIBLE UNDER CLEARING AND GRUBBING PAY ITEM FOR REPLACING ANY SHRUBS, PALMS, AND TREES DAMAGED DURING CONSTRUCTION. THE SAME SPECIES SHALL BE USED, AND THE SIZES OF PALMS AND TREES SHALL MATCH AS CLOSELY AS POSSIBLE THE SIZES OF THOSE NEEDING REPLACEMENT.

- PAY ITEM 102-1-12 SHALL INCLUDE THE FOLLOWING:
1. BACKFILL THOSE AREAS OF THE MEDIANS EXCAVATED FOR LANDSCAPING TO WITHIN 3" FROM TOP OF CURB.
  2. SUBMIT A SOIL SAMPLE TO PROJECT ENGINEER FOR APPROVAL BEFORE BACKFILLING.

DATE	DESCRIPTION	REVISIONS	DATE	DESCRIPTION

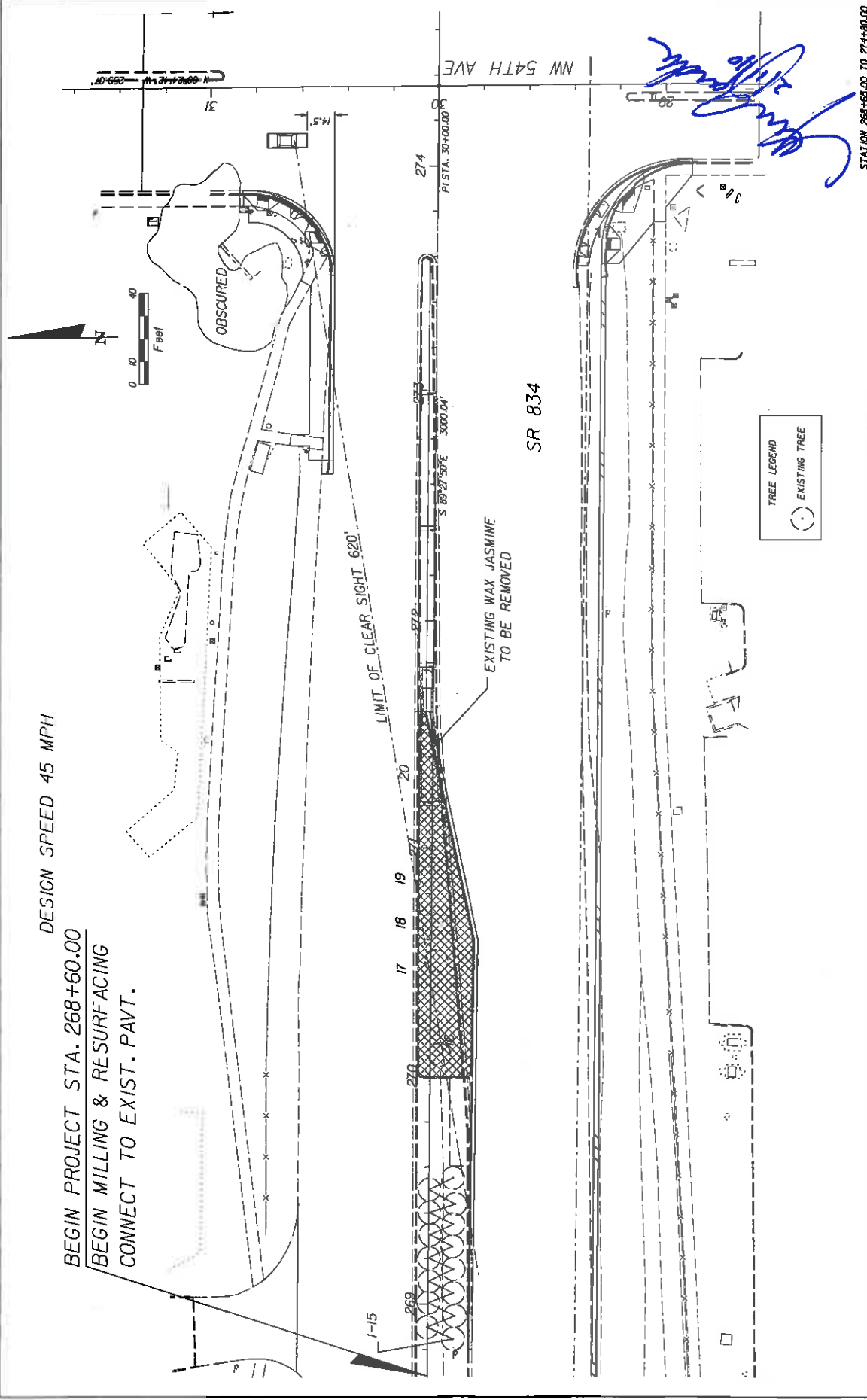
ROSENBERG GARDNER DESIGN LANDSCAPE ARCHITECTS AND PLANNERS 1000 S.W. 10TH AVENUE, SUITE 200 MIAMI, FL 33135 TEL: 305.375.1111 FAX: 305.375.1112 WWW.ROSENBERGGARDNERDESIGN.COM		STATE OF FLORIDA DEPARTMENT OF TRANSPORTATION ROAD NO. COUNTY BROWARD FINANCIAL PROJECT ID 421636-1-52-01	SHEET NO. <b>GENERAL AND PAY ITEM NOTES</b> LD-5
---	--	--	--

NOTICE: THE OFFICIAL RECORD OF THIS SHEET IS THE ELECTRONIC FILE SIGNED AND SEALED UNDER RULE 600-10.01, F.A.C.

TREE #	COMMON NAME	BOTANICAL NAME	NATIVE	DBH (In.)	CANOPY AREA (sq. Ft.)	TO BE REMOVED	TO REMAIN	TO BE RELOCATED	STATION	OFFSET	NOTES
1	Sabal Palm	Sabal palmetto	Y	12	79		X		268+84.564	(-10.0)'	
2	Sabal Palm	Sabal palmetto	Y	12	79		X		268+89.781	0'	
3	Sabal Palm	Sabal palmetto	Y	12	79		X		268+94.811	(-10.0)'	
4	Sabal Palm	Sabal palmetto	Y	12	79		X		269+00.529	0'	
5	Sabal Palm	Sabal palmetto	Y	12	79		X		269+04.843	(-10.0), 4'	
6	Sabal Palm	Sabal palmetto	Y	12	79		X		269+09.523	(-10.0)'	
7	Sabal Palm	Sabal palmetto	Y	12	79		X		269+15.078	(-10.0), 30'	
8	Sabal Palm	Sabal palmetto	Y	12	79		X		269+20.075	(-10.0), 3'	
9	Sabal Palm	Sabal palmetto	Y	12	79		X		269+25.913	(-10.0), 3'	
10	Sabal Palm	Sabal palmetto	Y	12	79		X		269+30.395	(-10.0), 2'	
11	Sabal Palm	Sabal palmetto	Y	12	79		X		269+34.668	(-10.0), 32'	
12	Sabal Palm	Sabal palmetto	Y	12	79		X		269+39.909	0'	
13	Sabal Palm	Sabal palmetto	Y	12	79		X		269+43.771	(-10.0), 4'	
14	Sabal Palm	Sabal palmetto	Y	12	79		X		269+50.066	0'	
15	Sabal Palm	Sabal palmetto	Y	12	79		X		269+55.149	(-10.0), 3'	
16	Sabal Palm	Sabal palmetto	Y	12	79		X		270+09.355	(-13.8)'	
17	Sabal Palm	Sabal palmetto	Y	12	79		X		270+30.201	(-12.2)'	
18	Sabal Palm	Sabal palmetto	Y	12	79		X		270+49.878	(-11.7)'	
19	Sabal Palm	Sabal palmetto	Y	12	79		X		271+30.459	(-11.1)'	
20	Sabal Palm	Sabal palmetto	Y	12	79		X		271+30.459	(-11.1)'	
21	Sabal Palm	Sabal palmetto	Y	12	79		X		271+30.459	(-11.1)'	
22	Sabal Palm	Sabal palmetto	Y	12	79		X		271+30.459	(-11.1)'	
23	Sabal Palm	Sabal palmetto	Y	12	79		X		271+30.459	(-11.1)'	
24	Sabal Palm	Sabal palmetto	Y	12	79		X		271+30.459	(-11.1)'	
25	Sabal Palm	Sabal palmetto	Y	12	79		X		271+30.459	(-11.1)'	
26	Sabal Palm	Sabal palmetto	Y	12	79		X		271+30.459	(-11.1)'	
27	Sabal Palm	Sabal palmetto	Y	12	79		X		271+30.459	(-11.1)'	
28	Sabal Palm	Sabal palmetto	Y	12	79		X		271+30.459	(-11.1)'	
29	Sabal Palm	Sabal palmetto	Y	12	79		X		271+30.459	(-11.1)'	
30	Sabal Palm	Sabal palmetto	Y	12	79		X		271+30.459	(-11.1)'	
31	Sabal Palm	Sabal palmetto	Y	12	79		X		271+30.459	(-11.1)'	
32	Sabal Palm	Sabal palmetto	Y	12	79		X		271+30.459	(-11.1)'	
33	Sabal Palm	Sabal palmetto	Y	12	79		X		271+30.459	(-11.1)'	
34	Sabal Palm	Sabal palmetto	Y	12	79		X		271+30.459	(-11.1)'	
35	Sabal Palm	Sabal palmetto	Y	12	79		X		271+30.459	(-11.1)'	
36	Sabal Palm	Sabal palmetto	Y	12	79		X		271+30.459	(-11.1)'	
37	Sabal Palm	Sabal palmetto	Y	12	79		X		271+30.459	(-11.1)'	
38	Sabal Palm	Sabal palmetto	Y	12	79		X		271+30.459	(-11.1)'	
39	Sabal Palm	Sabal palmetto	Y	12	79		X		271+30.459	(-11.1)'	
40	Sabal Palm	Sabal palmetto	Y	12	79		X		271+30.459	(-11.1)'	
41	Sabal Palm	Sabal palmetto	Y	12	79		X		271+30.459	(-11.1)'	
42	Sabal Palm	Sabal palmetto	Y	12	79		X		271+30.459	(-11.1)'	
43	Sabal Palm	Sabal palmetto	Y	12	79		X		271+30.459	(-11.1)'	
44	Sabal Palm	Sabal palmetto	Y	12	79		X		271+30.459	(-11.1)'	
45	Sabal Palm	Sabal palmetto	Y	12	79		X		271+30.459	(-11.1)'	
46	Sabal Palm	Sabal palmetto	Y	12	79		X		271+30.459	(-11.1)'	
47	Sabal Palm	Sabal palmetto	Y	12	79		X		271+30.459	(-11.1)'	
48	Sabal Palm	Sabal palmetto	Y	12	79		X		271+30.459	(-11.1)'	
49	Sabal Palm	Sabal palmetto	Y	12	79		X		271+30.459	(-11.1)'	
50	Sabal Palm	Sabal palmetto	Y	12	79		X		271+30.459	(-11.1)'	
51	Sabal Palm	Sabal palmetto	Y	12	79		X		271+30.459	(-11.1)'	
52	Sabal Palm	Sabal palmetto	Y	12	79		X		271+30.459	(-11.1)'	
53	Sabal Palm	Sabal palmetto	Y	12	79		X		271+30.459	(-11.1)'	

DATE	DESCRIPTION	REVISIONS	DATE
		STATES OF FLORIDA DEPARTMENT OF TRANSPORTATION ROAD NO. 834 COUNTY BROWARD FINANCIAL PROJECT ID 421656-1-52-01	
HARBOR LIGHTS NATIONAL LAND TRAIL 10000 N. W. 10th St. Fort Lauderdale, FL 33309 (954) 575-1100		EXISTING TREE DISPOSITION LIST	
CITY OF COCONUT CREEK		SHEET NO. LD-6	

DESIGN SPEED 45 MPH  
 BEGIN PROJECT STA. 268+60.00  
 BEGIN MILLING & RESURFACING  
 CONNECT TO EXIST. PAVT.



DATE	DESCRIPTION	REVISIONS	DATE	DESCRIPTION

STATES OF FLORIDA DEPARTMENT OF TRANSPORTATION	
ROAD NO.	FINANCIAL PROJECT ID
834	401656-1-52-01
COUNTY	BROWARD

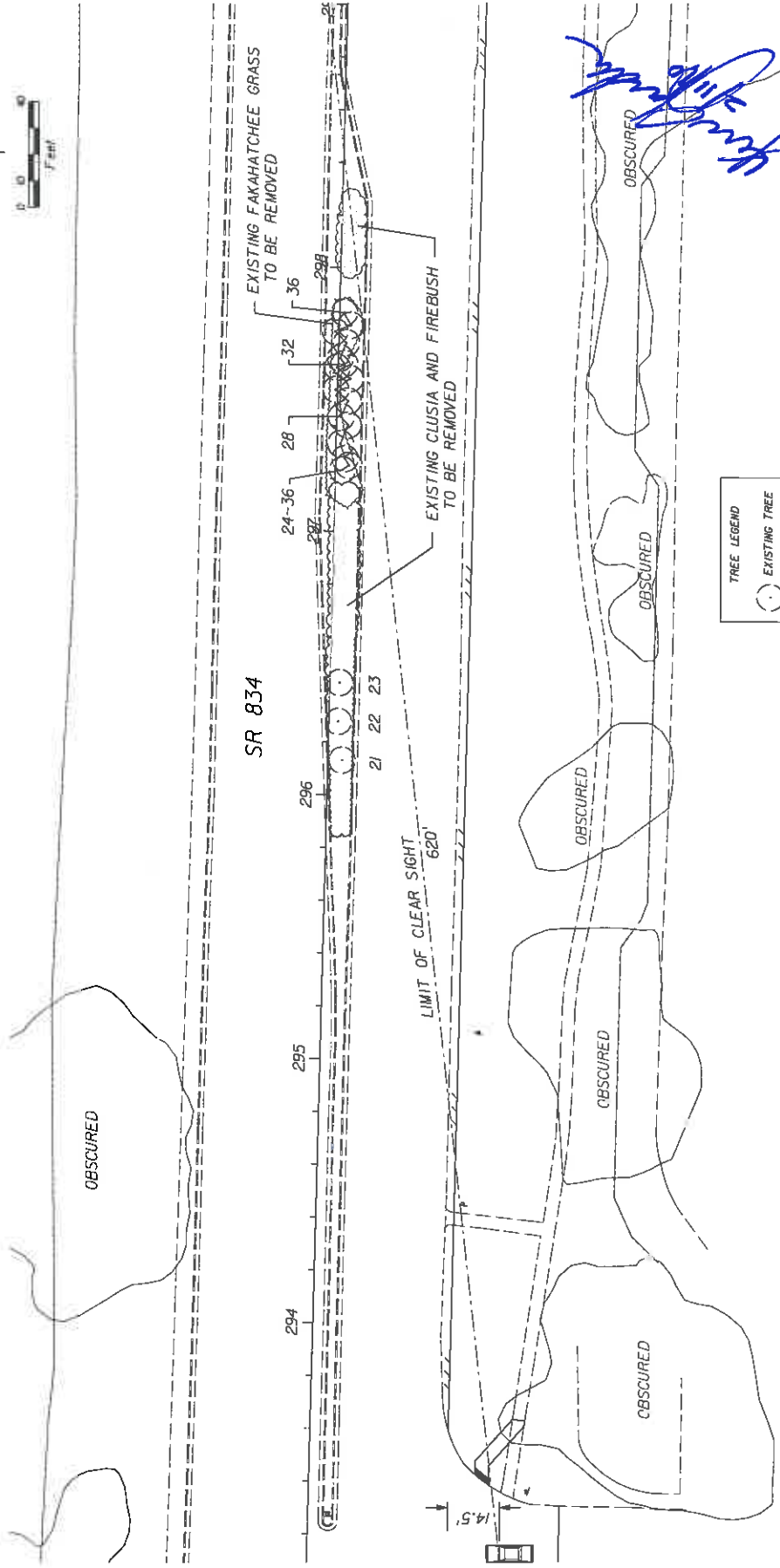
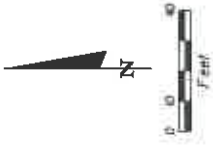
ROSENBERG GARDEN DESIGN <small>LANDSCAPE ARCHITECTURE          AND PLANNING          100 UNIVERSITY BLVD, SUITE 200          FORT LAUDERDALE, FL 33304          TEL: 954-575-1100          WWW.ROSENBERGGARDENDESIGN.COM</small>	
---	--

STATION 268+65.00 TO 274+00.00	SHEET NO.
	LD-7

NOTICE: THE OFFICIAL RECORD OF THIS SHEET IS THE ELECTRONIC FILE SIGNED AND SEALED UNDER RULE 6800-11.014, F.A.C.

DESIGN SPEED 45 MPH



*Handwritten signature in blue ink.*

STATION 293+00.00 TO 298+00.00

SHEET NO. LD-8

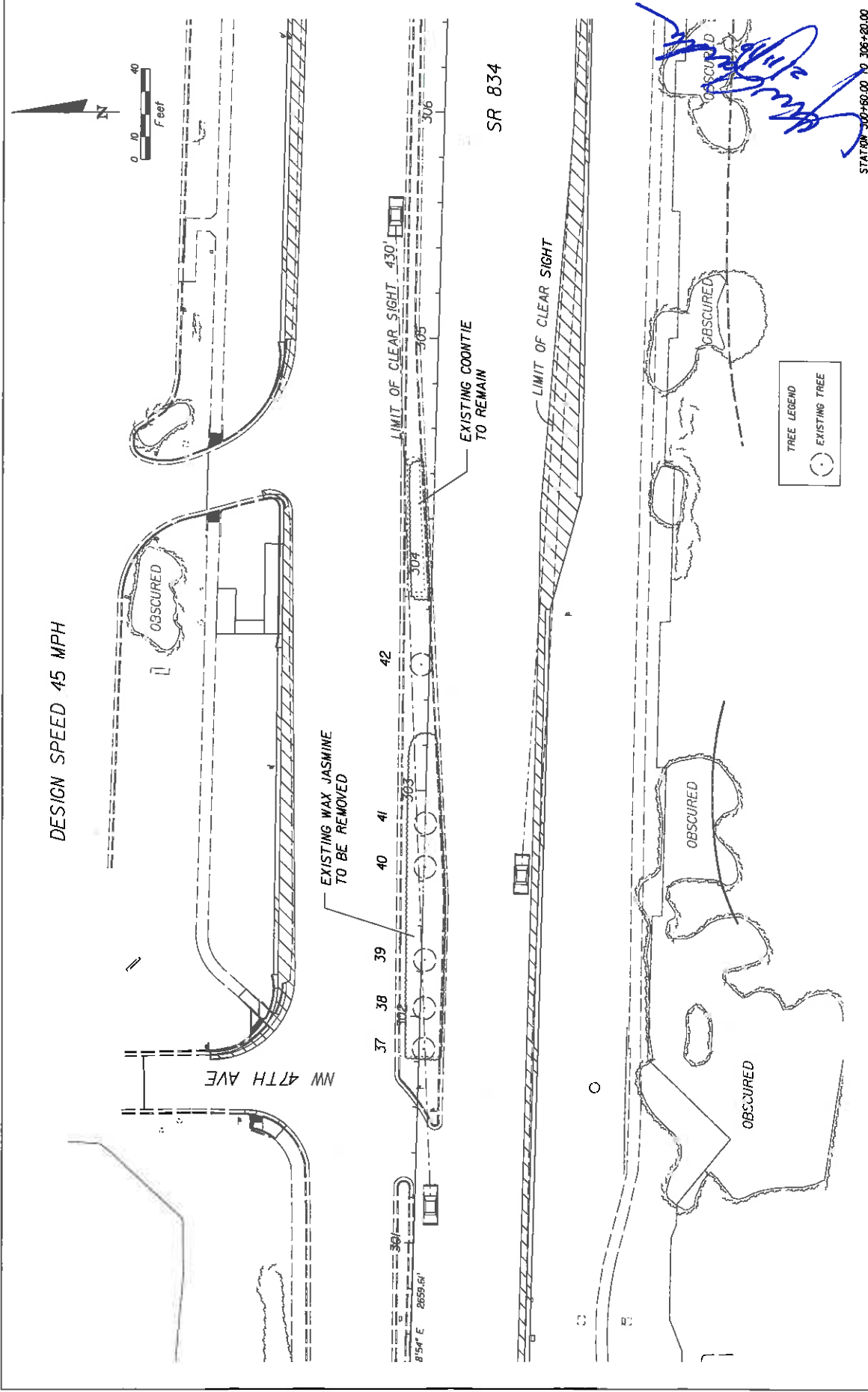
**EXISTING LANDSCAPE DISPOSITION PLAN**

STATES OF FLORIDA  
DEPARTMENT OF TRANSPORTATION  
ROAD NO. 834 COUNTY BROWARD FINANCIAL PROJECT ID 421656-1-52-01

**ROSENBERG GARDNER DESIGN**  
LANDSCAPE ARCHITECTS  
REGISTERED PROFESSIONAL ARCHITECTS  
REGISTERED PROFESSIONAL ENGINEERS  
REGISTERED PROFESSIONAL SURVEYORS  
1000 W. UNIVERSITY BLVD., SUITE 100  
MILWAUKEE, WI 53233  
TEL: 414.224.1100 FAX: 414.224.1101

DATE	DESCRIPTION	REVISIONS	DATE	DESCRIPTION

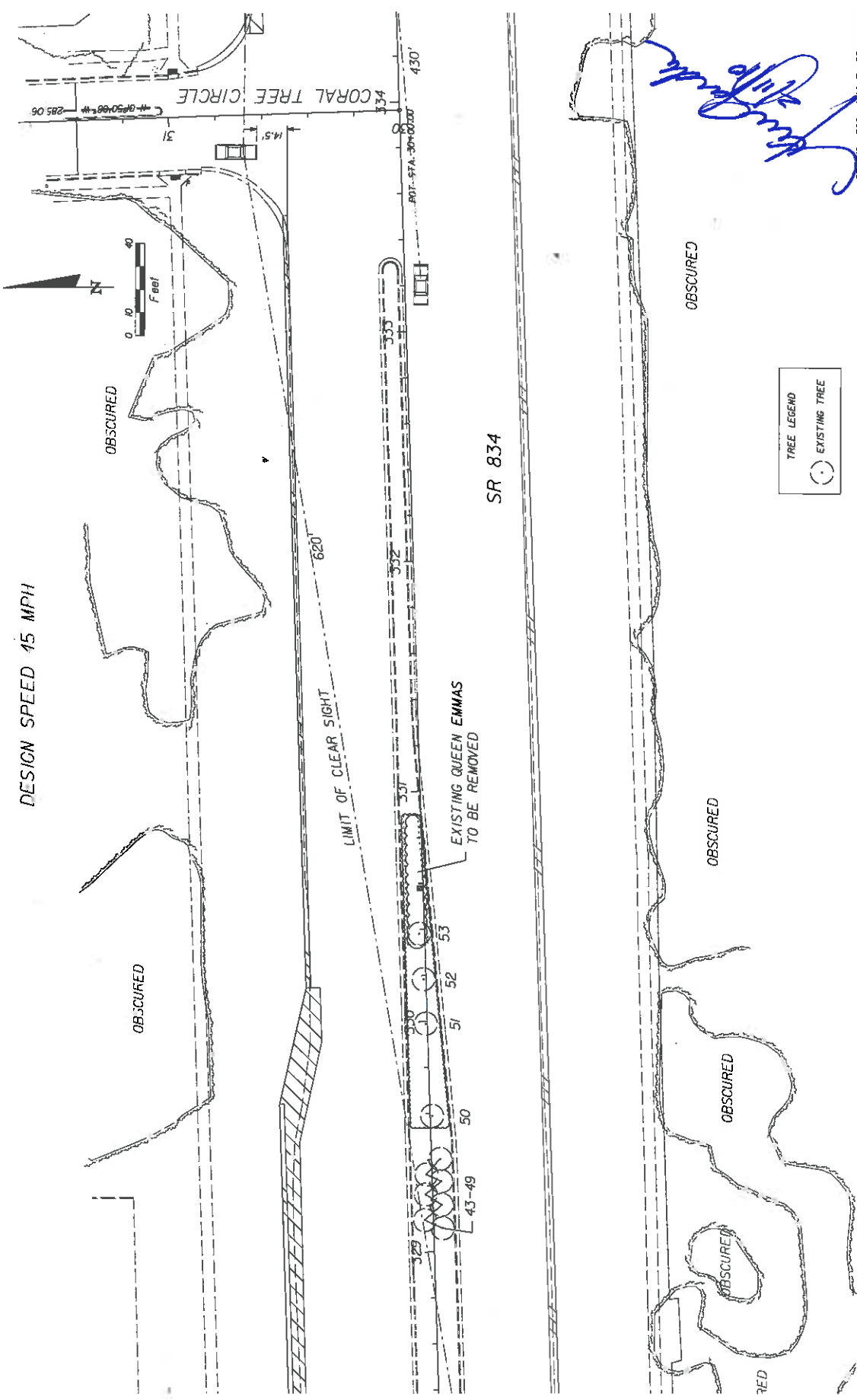
NOTICE: THE OFFICIAL RECORD OF THIS SHEET IS THE ELECTRONIC FILE SIGNED AND SEALED UNDER RULE 680-10.01, F.A.C.



DATE		DESCRIPTION	REVISIONS	DATE	DESCRIPTION	STATE OF FLORIDA DEPARTMENT OF TRANSPORTATION ROAD NO. 834 COUNTY BROWARD FINANCIAL PROJECT ID 421656-1-52-01	STATION 300+60.00 TO 306+20.00
ROSENBERG GARDNER DESIGN LICENSED ARCHITECTURE LAND PLANNING 1500 UNIVERSITY BLVD., SUITE 100 WEST PALM BEACH, FL 33411 TEL: (561) 833-1111							
EXISTING LANDSCAPE DISPOSITION PLAN							
SHEET NO.							
LD-9							

NOTICE: THE OFFICIAL RECORD OF THIS SHEET IS THE ELECTRONIC FILE SIGNED AND SEALED UNDER RULE 690-400, F.A.C.

DESIGN SPEED 15 MPH



SR 834

STATION 328+00.00 TO 334+00.00

DATE	DESCRIPTION	REVISIONS	DATE	DESCRIPTION

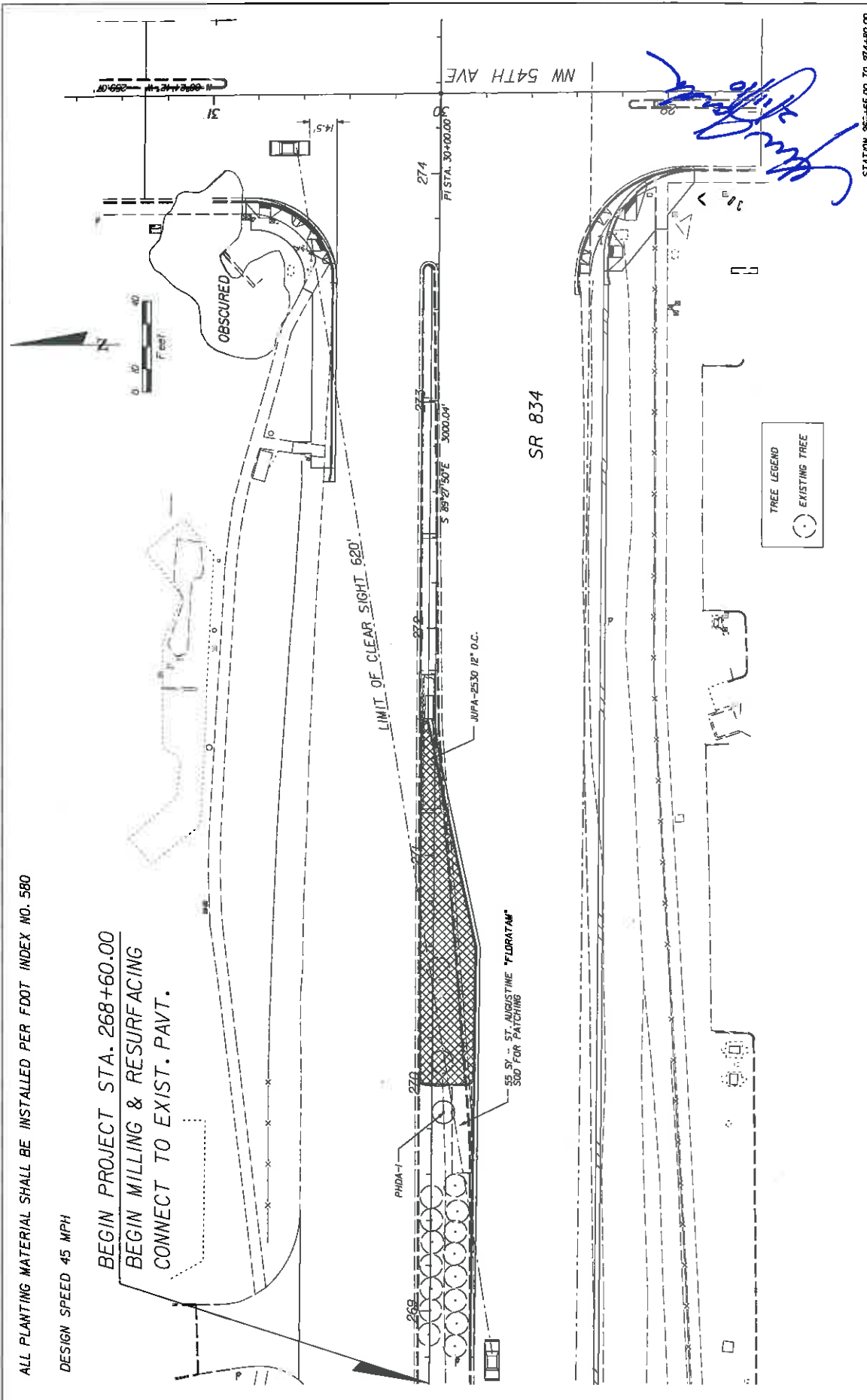
<b>ROSENBERG GARDNER DESIGN</b> <small>LANDSCAPE ARCHITECTURE AND PLANNING</small> <small>1000 N. W. 10th Street, Suite 200</small> <small>MIAMI, FL 33136</small> <small>TEL: 305.575.1100</small> <small>FAX: 305.575.1101</small> <small>WWW.RGDDESIGN.COM</small>		STATES OF FLORIDA DEPARTMENT OF TRANSPORTATION ROAD NO. 834 COUNTY BROWARD FINANCIAL PROJECT TO 421656-1-52-01	EXISTING LANDSCAPE DISPOSITION PLAN SHEET NO. LD-10
---	--	--	---

NOTICE: THE OFFICIAL RECORD OF THIS SHEET IS THE ELECTRONIC FILE SIGNED AND SEALED UNDER RULE 680-10N, F.A.C.

ALL PLANTING MATERIAL SHALL BE INSTALLED PER FOOT INDEX NO. 580

DESIGN SPEED 45 MPH

BEGIN PROJECT STA. 268+60.00  
BEGIN MILLING & RESURFACING  
CONNECT TO EXIST. PAVT.



STATION 268+65.00 TO 274+80.00

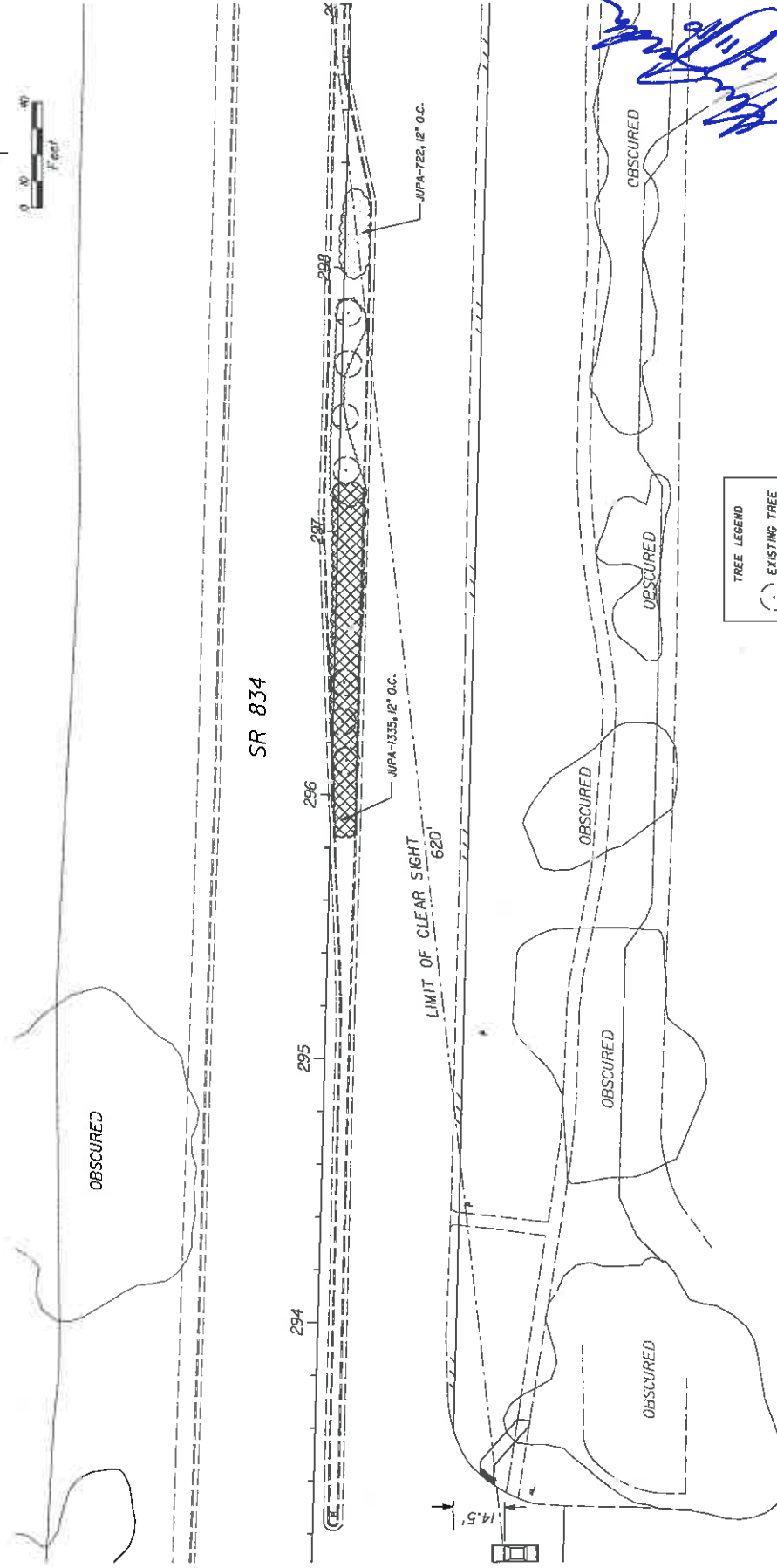
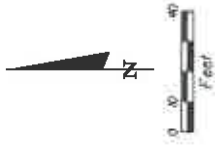
DATE	DESCRIPTION	REVISIONS	DATE	DESCRIPTION
STATES OF FLORIDA DEPARTMENT OF TRANSPORTATION ROAD NO. 834 COUNTY BROWARD FINANCIAL PROJECT ID 421656-1-52-01				
<b>ROSENBERG GARDNER DESIGN</b> <small>LANDSCAPE ARCHITECTURE AND PLANNING INC.</small> <small>1000 UNIVERSITY BLVD., SUITE 200, MIAMI, FL 33136</small>				
<b>PLANTING PLAN</b>				
				SHEET NO. LD-11

NOTICE: THE OFFICIAL RECORD OF THIS SHEET IS THE ELECTRONIC FILE SIGNED AND SEALED UNDER RULE 6100-9.00, F.A.C.



ALL PLANTING MATERIAL SHALL BE INSTALLED PER FDOT INDEX NO. 580

DESIGN SPEED 45 MPH



TREE LEGEND

- (Symbol: circle with a dot) EXISTING TREE

*[Handwritten signature]*

STATION 293+00.00 TO 298+00.00

DATE	DESCRIPTION	DATE	DESCRIPTION

STATE OF FLORIDA	
DEPARTMENT OF TRANSPORTATION	
ROAD NO.	FINANCIAL PROJECT ID
834	42656-1-52-01
COUNTY	
BROWARD	

ROSENBERG GARDNER DESIGN 1511 UNIVERSITY BLVD., SUITE 100 WEST PALM BEACH, FL 33411 TEL: 561-833-1111	
STATE OF FLORIDA DEPARTMENT OF TRANSPORTATION PROJECT NO. 42656-1-52-01	
PLANTING PLAN	
SHEET NO.	LD-12

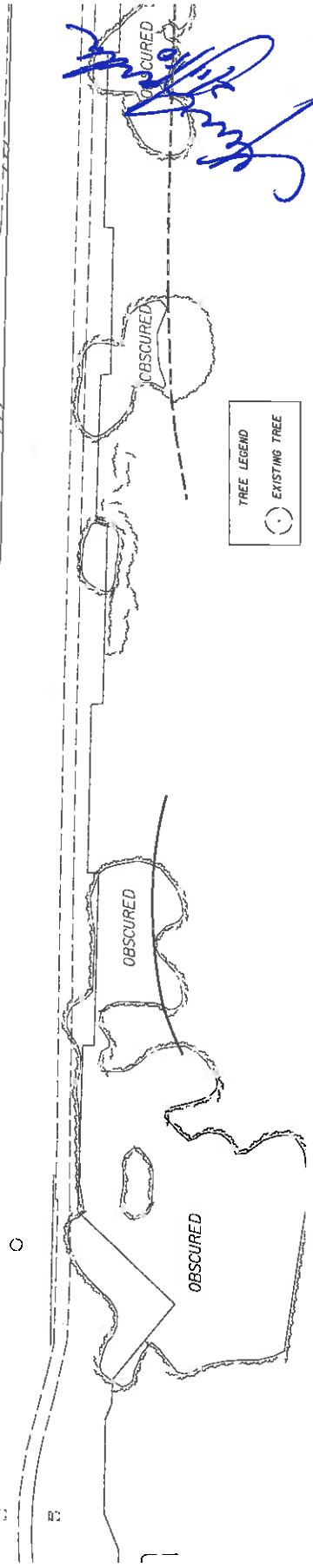
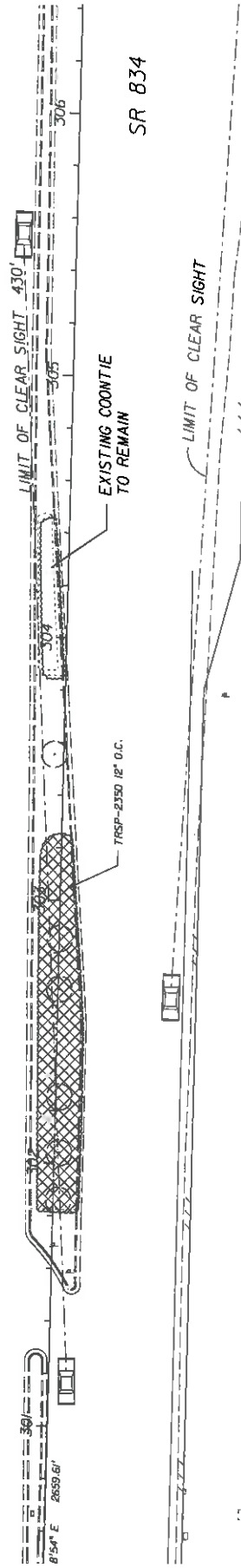
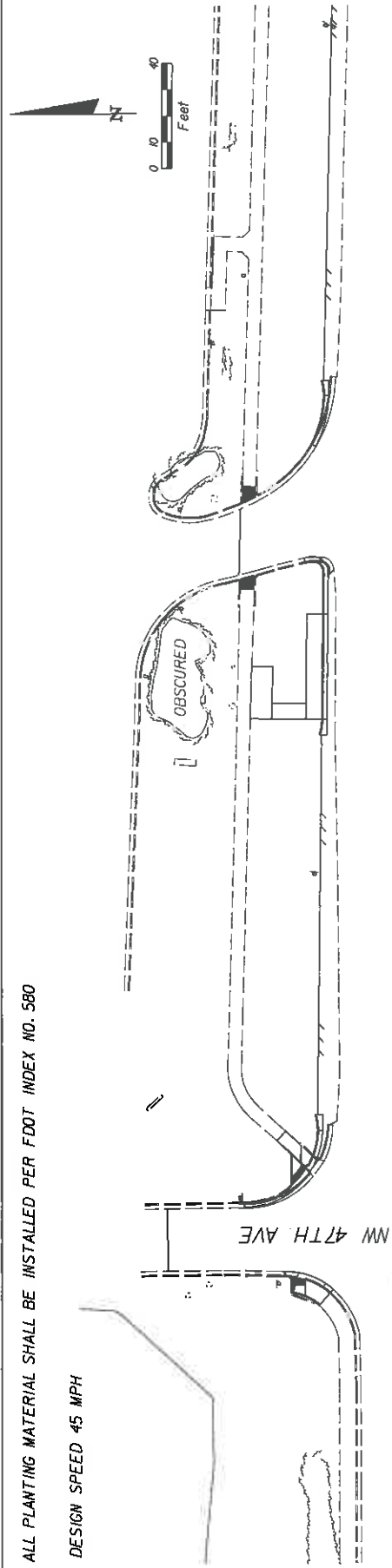
SR 834

NOTICE: THE OFFICIAL RECORD OF THIS SHEET IS THE ELECTRONIC FILE SIGNED AND SEALED UNDER RULE 650-1.01, F.A.C.



ALL PLANTING MATERIAL SHALL BE INSTALLED PER FDOT INDEX NO. 580

DESIGN SPEED 45 MPH



STATION 300+00.00 TO 306+20.00

DATE	DESCRIPTION	REVISION	DATE	DESCRIPTION

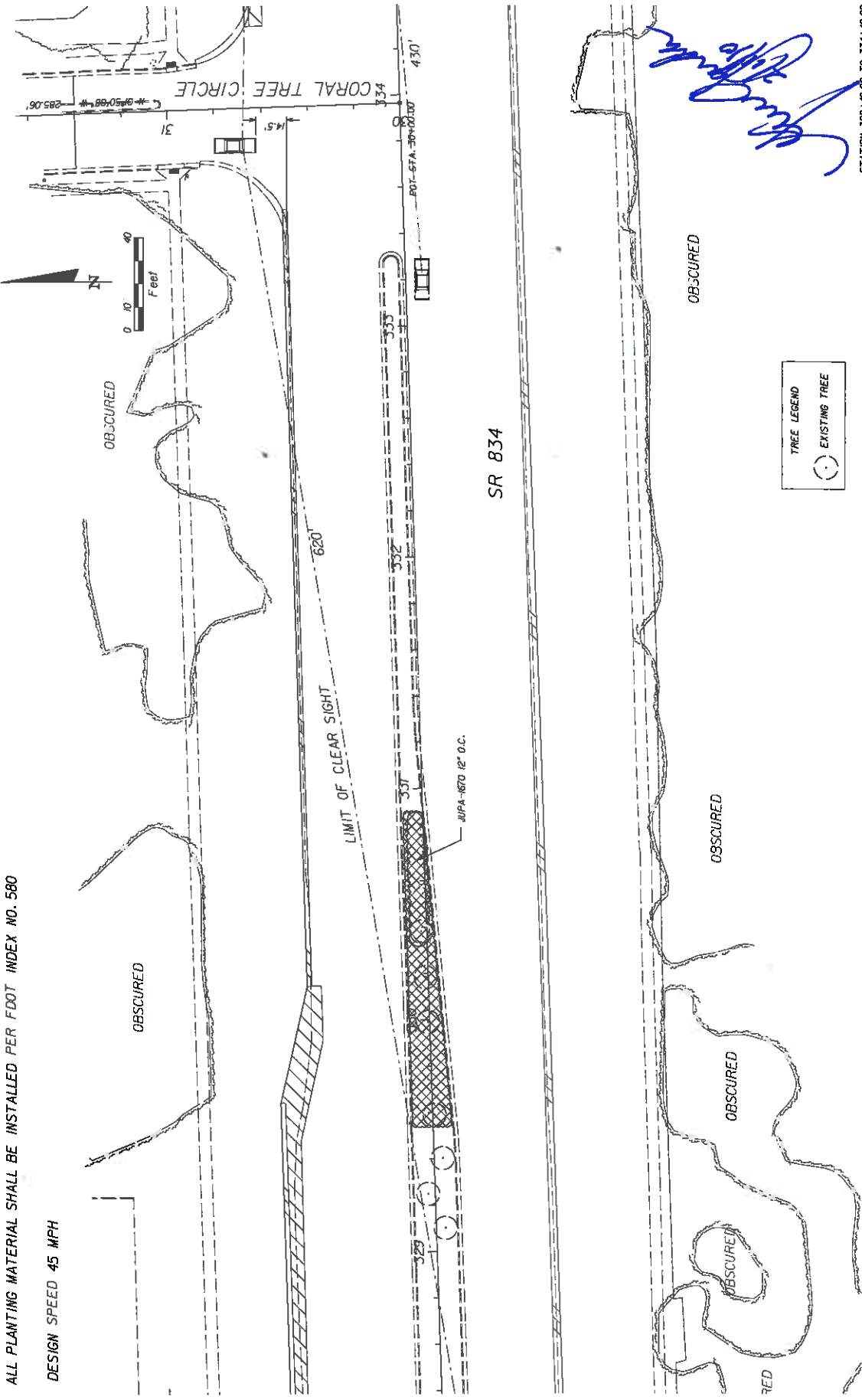
STATES OF FLORIDA DEPARTMENT OF TRANSPORTATION		SHEET NO. LD-13	
ROAD NO. 834	COUNTY BROWARD	FINANCIAL PROJECT ID 421656-1-52-01	PLANTING PLAN

**ROSENBERG GARDNER DESIGN, INC.**  
 LANDSCAPE ARCHITECTS  
 LAND PLANNERS  
 1000 UNIVERSITY BLVD, SUITE 100  
 FORT LAUDERDALE, FL 33404  
 TEL: 954-473-1111  
 FAX: 954-473-1112  
 WWW.ROSENBERGGARDNERDESIGN.COM

NOTICE: THE OFFICIAL RECORD OF THIS SHEET IS THE ELECTRONIC FILE SIGNED AND SEALED UNDER RULE 68D-10.01, F.A.C.

ALL PLANTING MATERIAL SHALL BE INSTALLED PER FDOT INDEX NO. 580

DESIGN SPEED 45 MPH



TREE LEGEND  
 ○ EXISTING TREE

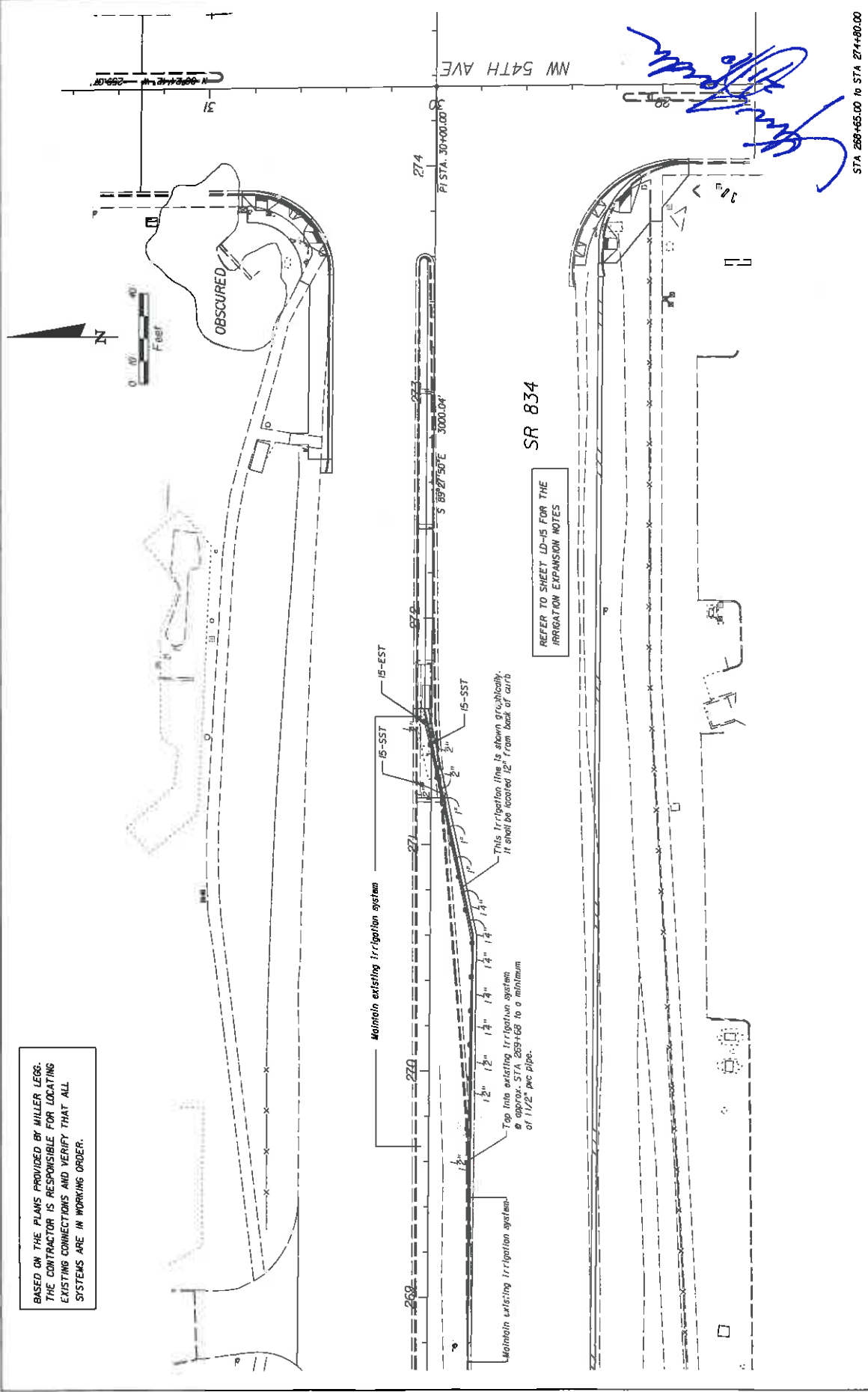
*[Handwritten Signature]*

STATION 388+00.00 TO 394+00.00

DATE	DESCRIPTION	REVISIONS	DATE	DESCRIPTION

STATES OF FLORIDA DEPARTMENT OF TRANSPORTATION		ROAD NO. 834 COUNTY BROWARD FINANCIAL PROJECT ID 421656-1-52-01	
ROSENBERG GARDNER DESIGN <small>LANDSCAPE ARCHITECTS          LAND PLANNING          CIVIL ENGINEERING          SURVEYING          REGISTERED PROFESSIONAL ENGINEERS          1001 UNIVERSITY BLVD., SUITE 100          WEST PALM BEACH, FL 33411</small>		PLANTING PLAN	
SHEET NO. LD-14		STATION 388+00.00 TO 394+00.00	



BASED ON THE PLANS PROVIDED BY MILLER LEGG, THE CONTRACTOR IS RESPONSIBLE FOR LOCATING EXISTING CONNECTIONS AND VERIFY THAT ALL SYSTEMS ARE IN WORKING ORDER.

REFER TO SHEET LD-15 FOR THE IRRIGATION EXPANSION NOTES

SR 834

STA 268+65.00 TO STA 274+80.00

DATE	DESCRIPTION	REVISIONS	DATE	DESCRIPTION

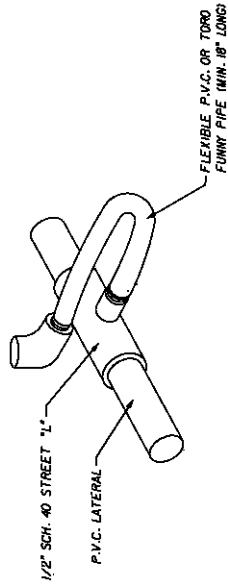
STATES OF FLORIDA DEPARTMENT OF TRANSPORTATION		FINANCIAL PROJECT ID 421656-1-52-01
ROAD NO. 834	COUNTY BROWARD	

ROSENBERG GARDNER DESIGN <small>LAND SURVEYING                  ENGINEERING                  ARCHITECTURE                  PLANNING                  INTERIOR DESIGN                  1000 UNIVERSITY BLVD, SUITE 100                  MIAMI GARDENS, FL 33143</small>	SHEET NO. LD-15
---	--------------------

IRRIGATION PLAN


*[Handwritten Signature]*



FLEXIBLE SWING JOINT DETAIL

N.T.S.

*[Handwritten Signature]*

REVISIONS		STATE OF FLORIDA		SHEET NO.	
DATE	DESCRIPTION	ROAD NO.	COUNTY	FINANCIAL PROJECT ID	LD-16
		834	BROWARD	421E5C-1-52-01	
		DEPARTMENT OF TRANSPORTATION		FLEXIBLE SWING JOINT DETAIL	
					

**SECTION NO: 86028**  
**S.R. NO(S): 834 (Sample Rd.)**  
**COUNTY: Broward**  
**FM NO.(S): 421656-1-52-01**

## **EXHIBIT C**

### **MAINTENANCE PLAN**

**This Exhibit forms an integral part of the DISTRICT FOUR (4) Amendment to the HIGHWAY MAINTENANCE MEMORANDUM OF AGREEMENT between the State of Florida, Department of Transportation and the AGENCY.**

**Dated: February 11, 2010**

# MAINTENANCE PLAN

## Landscape Improvements

**Project State Road No(s):** 834  
**Project Limits:** From west of NW 54 Ave. (M.P. 3.221) to east of Tradewinds Park Road (M.P. 4.763)  
**FM No(s):** 421656-1-52-01  
**Maintaining Agency:** City of Coconut Creek  
**RLA of Record:** Ken Gardner #1569  
**Date:** February 11, 2010

---

### **I. General Maintenance Requirements and Recommendations:**

The purpose of a plan for the landscape improvements maintenance practices is to allow the plant material on your project to thrive in a safe and vigorous manner while fulfilling their intended purpose and conserving our natural resources. Plantings and all other landscape improvements shall be maintained to avoid potential roadway hazards and to provide required clear visibility, accessibility, clearance, and setbacks as set forth by Florida Department of Transportation (FDOT) governing standards and specifications: *FDOT Design Standards, FDOT Plans Preparation Manual Vol. I, Chapter 2.11* and *FDOT Standard Specifications for Road and Bridge Construction* as amended by contract documents; and all other requirements set forth by the District 4 Operations Maintenance Engineer. The initial portion of the Maintenance Plan describes general maintenance requirements and recommendations. The concluding section is recommendations prepared by the Landscape Architect of Record specific to the attached approved plans.

### **Watering Requirements:**

Watering is a critical concern for not only the maintenance of healthy plant material but also for observing water conservation practices. The amount of water to apply at any one time varies with the weather, drainage conditions and water holding capacity of the soil. For plant materials that have been established, it is imperative that any mandated water restrictions be fully conformed to on FDOT roadways.

Proper watering techniques should provide even and thorough water dispersal to wet the entire root zone, but not saturate the soil or over-spray onto travel lanes.

### **Irrigation System:**

The Agency shall ensure there are no roadway overspray or irrigation activities during daytime hours (most notably "rush hour" traffic periods). It is imperative the irrigation controller is properly set to run early enough that the watering process will be entirely completed before high traffic periods, while adhering to mandated water restrictions. To

ensure water conservation, the Agency shall monitor the system for water leaks and the rain sensors to ensure they are functioning properly so that the system shuts down when there is sufficient rainfall.

**Integrated Plant Management:**

An assessment of each planting area's soil is recommended to periodically determine the nutrient levels needed to sustain healthy, vigorous plant growth.

Palms, shrubs, trees and turf areas shall be fertilized in such a manner and frequency to ensure that the plant material remains healthy and vigorously growing. Establishment of an integrated plant management program is encouraged to ensure healthy plants, which are free of disease and pests.

**Mulching:**

Mulch planting beds in such a manner as to: prevent weed growth; retain moisture to the plants; protect against soil erosion and nutrient loss; maintain a more uniform soil temperature; and improve the appearance of the planting beds. Avoid mulch mounded up on the trunks of trees, palms, and the base of shrubs to encourage air movement in this area that aids in lowering disease susceptibility. Cypress mulch is prohibited on state right of way.

**Pruning:**

All pruning, and the associated safety criteria, shall be performed according to American National Standard Institute ANSI A300 standards and shall be supervised by an International Society of Arboriculture (ISA) Certified Arborist. Pruning shall be carried out with the health and natural growth of plant materials in mind, and to specific pruning heights maintaining clear visibility for motorists, and vertical clearance for pedestrian, bicyclist, and truck traffic where applicable. Visibility windows must be maintained free of view obstructions and all trees and palms (with particular attention to fronds and fruit) maintained to prevent potential roadway and pedestrian hazards. The specific pruning heights are determined by understanding the designer's intent when selecting and placing the plants. The intended mature maintained height and spread of plants should be noted on the planting plans. (See Specific Requirements and Recommendations per Approved Landscape & Irrigation Design for these guidelines). The understory plant materials selected for use within the restricted planting areas (Limits of Clear Sight) of the medians are to be maintained at a height in compliance with FDOT Design Standards Index 546, Page 6 of 6, Window Detail. Vertical tree heights must meet *FDOT Maintenance Rating Program* (MRP) standards.

**Staking and Guying:**

All staking materials, except for replacements, are removed by the completion of FDOT warranty period or at one year (whichever comes first). Any subsequent staking and guying activities by the Agency must adhere to *FDOT Design Standards* guidelines (See Index 544). The Agency shall closely monitor staking and guying attachment materials so that they are securely fastened to avoid potential roadway hazards.

**Turf Mowing:**

All grassed areas are to be mowed and trimmed with sufficient frequency to maintain a deep, healthy root system while providing a neat and clean appearance to the urban landscape. All turf efforts: mowing, curb/sidewalk edging, and turf condition must meet *FDOT Maintenance Rating Program (MRP)*.

**Litter Control:**

The project site shall remain as litter free as practicable. It is recommended to recycle this litter to avoid unnecessary waste by its reuse. Litter removal efforts must meet *FDOT Maintenance Rating Program (MRP)* standards.

**Weeding/Herbicide:**

All planting areas shall be maintained as weed free as practicable enlisting integrated pest management practices in areas specified on the plans and by maintaining proper mulch levels. Extreme care is recommended if using a chemical herbicide to avoid overspray onto plant materials. Any damage resulting from overspray is the applicator's responsibility to restore the plantings to the approved plans.

**Plant Replacement:**

Plant replacement shall be the same species and specification as the approved plan. Move and replace all plant materials that may conflict with utility relocations and service. Only plants graded Florida #1 or better, per the *Florida Department of Agriculture and Consumers Services, Grades and Standards for Nursery Plants* are permitted on FDOT roadways. Should it become necessary to change the species, a general use permit is required from FDOT for approval by the FDOT District Landscape Architect.

**Hardscape (Specialty Surfacing):**

All specialty pavers and shall be maintained in such a manner as to prevent any potential tripping hazards and protect damage to the pavers. Final surface tolerance from grade elevations shall, at a minimum, meet the most current *Interlocking Concrete Pavement Institute (ICPI), Section 23 14 13 Interlocking Concrete Pavers*, Part 3.05. If the pavers become damaged, they shall be replaced with the same type and specification as existing.

**Hardscape (Non-Standard Travelway Surfacing):**

It shall be the responsibility of the AGENCY to restore an unacceptable ride condition of the roadway, including asphalt pavement, caused or contributed by the installation or failure of non-standard surfacing, and/or the header curb, on the Department of Transportation right-of-way within the limits of this Agreement. Pavement restoration areas or "patches" will have a minimum length of 10-ft, measured from the edge of the header curb, and a width to cover full lanes for each lane affected by the restoration.

Pavement restoration will be performed in accordance with the most current edition of the *FDOT Standard Specifications for Road and Bridge Construction*, and the *FDOT*



*Design Standards for Design, Construction, Maintenance and Utility Operations on the State Highway System.*

It shall be the responsibility of the AGENCY to maintain all signs located within a non-standard surfacing area. Such maintenance to be provided by the AGENCY shall include repair, replace of the sign panel, post, and base.

**Hardscape (Landscape Accent Lighting)**

Landscape accent lighting shall be maintained in such a manner as to prolong the life of the lighting fixture and prevent potential safety hazards. If the lighting fixtures and their system become damaged, they shall be replaced with the same type and specification as the approved plan.

**Maintenance of Traffic Control**

Reference the FDOT website regarding the selection of the proper traffic control requirements to be provided during routine maintenance and / or new installations of this DOT roadway.

Website: Series 600 Traffic Control through Work Zones  
<http://www.dot.state.fl.us/rddesign/DesignStandards/Standards.htm>

**Vegetation Management at Outdoor Advertising (ODA)**

To avoid conflicts with permitted outdoor advertising, please reference the State of Florida website regarding the vegetation management of outdoor advertising. This website provides a portal to search the FDOT Outdoor Advertising Inventory Management System Database. The database contains an inventory of outdoor advertising structures, permits and other related information maintained by the Department.

Website: FDOT Outdoor Advertising Database  
<http://www2.dot.state.fl.us/rightofway/Default.aspx>

Also, reference the Florida Highway Beautification Program website link for Vegetation Management at ODA signs for the Florida Statutes and Administrative Codes related to Vegetation Management at Outdoor Advertising Signs and Permit Applications for Vegetation Management and Outdoor Advertising Signs determining Mitigation Value of Roadside Vegetation.

Website: FDOT Environmental Management office for Landscape Architects  
<http://www.dot.state.fl.us/emo/beauty/FLA.shtm>

**II. Specific Project Site Maintenance Requirements and Recommendations:**

None

## REFERENCES

This reference list is provided as a courtesy. The list may not contain the most current websites. The most current references must be accessed for up to date information.

American National Standard Institute, *ANSI A300, (Part 1) for Tree Care Operations – Trees, Shrub, and Other Woody Plant Maintenance – Standard Practices (Pruning)*, available for purchase

<http://www.treespecialists.com/pdfs/pruningstandards.pdf>

Florida Department of Agriculture and Consumer Services, Division of Plant Industry, *Florida Grades and Standards for Nursery Stock*, available for purchase

<http://www.doacs.state.fl.us/pi/plantinsp/publications.html>

Florida Department of Transportation, *FDOT Design Standards for Design, Construction, Maintenance and Utility Operations on the State Highway System, Index 544 Landscape Installation*

<http://www.dot.state.fl.us/rddesign/rd/RTDS/08/544.pdf>

Florida Department of Transportation, *FDOT Design Standards for Design, Construction, Maintenance and Utility Operations on the State Highway System, Index 546 Sight Distance at Intersections*

<http://www.dot.state.fl.us/rddesign/rd/RTDS/08/546.pdf>

Florida Department of Transportation, *FDOT Design Standards for Design, Construction, Maintenance and Utility Operations on the State Highway System, Index 700 Roadside Offsets*

<http://www.dot.state.fl.us/rddesign/rd/RTDS/08/700.pdf>

Florida Department of Transportation, *FDOT Plans Preparation Manual (PPM) Vol. I Chapters 2.11.5, Horizontal Clearance to Trees; Table 2.11.9 Horizontal Clearance and Clear Zone; Figure 4.1.2 Clear Zone; and Table 25.4.11.1 Clear Zone Width (feet) and Table 25.4.14.6 (for existing) trees*

<http://www.dot.state.fl.us/rddesign/PPMManual/2008/Volume1/zChap02.pdf>

Florida Department of Transportation, *FDOT Standard Specifications for Road and Bridge Construction, Section 580 Landscape Installation*

<http://www.dot.state.fl.us/specificationsoffice/Implemented/CurrentBK/CurrentSpecs/580.pdf>

Florida Department of Transportation, *Maintenance Rating Program Handbook*

<http://ombnet.dot.state.fl.us/procedures/bin/850065002.pdf>

Florida Department of Transportation, Landscape Architecture Website  
<http://www.dot.state.fl.us/emo/beauty/beauty.shtm>

Interlocking Concrete Pavement Institute (ICPI)  
<http://www.icpi.org/> <http://www.fisstate.org>

International Society of Arboriculture (ISA)  
[www.isa-arbor.com](http://www.isa-arbor.com)

Manual on Uniform Traffic Control Devices  
<http://www.mutcd.fhwa.dot.gov>

Florida Irrigation Society  
<http://www.fisstate.org>

Florida Department of Community Affairs (FCA), *Florida Board of Building Codes & Standards, Florida Accessibility Code for Building Construction*  
[http://www.dca.state.fl.us/fbc/publications/1\\_publications.htm](http://www.dca.state.fl.us/fbc/publications/1_publications.htm)

*Guide to Roadside Mowing and Guide to Turf Management*, available for purchase  
<http://infonet.dot.state.fl.us/SupportServicesOffice/plist.htm>

Accessible Sidewalk Videos (ADA)  
<http://www.access-board.gov/news/sidewalk-videos.htm>

**SECTION NO: 86028**  
**S.R. NO(S): 834 (Sample Rd.)**  
**COUNTY: Broward**  
**FM NO.(S): 421656-1-52-01**

## **EXHIBIT D**

### **PROJECT COST**

**This Exhibit forms an integral part of the DISTRICT FOUR (4) Amendment to the HIGHWAY MAINTENANCE MEMORANDUM OF AGREEMENT between the State of Florida, Department of Transportation and the AGENCY.**

**Dated: 1/7/2010**

**I. APPROXIMATE PROJECT COST: \$ 72,283.71**

SR 834 (Sample Road) Cost Estimate

FM# 421656-1-52-01	1/7/2010			
ITEM	QTY.	UNIT	UNIT COST	TOTAL COST
Removal and disposal of Sabal Palms	13	ea.	\$ 200.00	\$ 2,600.00
Removal and disposal of Solitaire Palms	2	ea.	\$ 150.00	\$ 300.00
Removal and disposal of Medjool Palm	1	ea.	\$ 450.00	\$ 450.00
Clearing and Grubbing				\$ 5,000.00
Medjool Date Palm	1	ea.	\$ 8,000.00	\$ 8,000.00
St. Augustine 'Floritam'	355	s.f.	\$ 0.30	\$ 106.50
Dwarf Variegated Oyster Plant	7085	ea.	\$ 4.60	\$ 32,591.00
Irrigation Heads (incl. laterals & fittings)	14	ea.	\$ 35.00	\$ 490.00
			TOTAL COST	\$ 65,309.40
General Contractor Mark up (15%)				\$ 6,974.31
			GRAND TOTAL	\$ 72,283.71